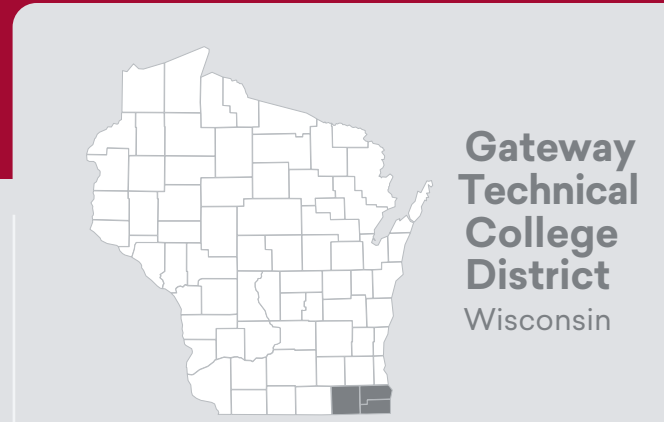




REFLECTS FY 2020-21

The Economic Value of Gateway Technical College



About Gateway

16,616 Students

787 Employees

1 out of every 28 jobs in the Gateway Technical College District is supported by the activities of Gateway and its students.

ECONOMIC IMPACT ANALYSIS

Alumni impact
Impact of the increased earnings of Gateway alumni and the businesses they work for

\$463.3 million
Added income

7,493 Jobs supported

An economic boost similar to hosting the World Series **77x**

OR

Operations spending impact
Impact of annual payroll and other spending

\$81.1 million
Added income

Enough to buy **2,417** new cars

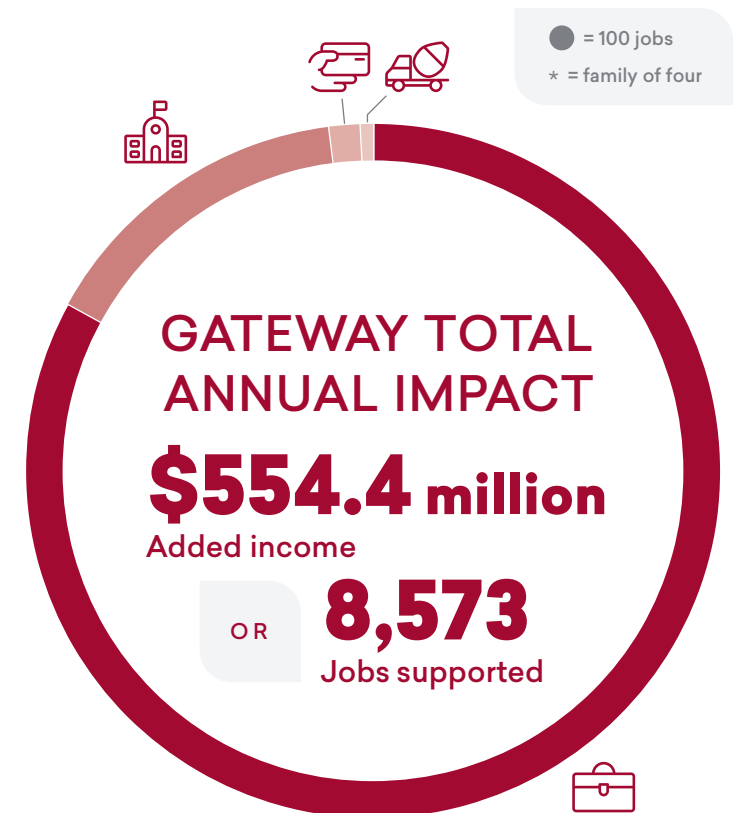
OR **885** Jobs supported

Student spending impact
Impact of the daily spending of Gateway students attracted to or retained in the region

\$8.3 million
Added income

Enough to buy **664** families* a year's worth of groceries

OR **172** Jobs supported



Construction spending impact
Impact of expenditures for ongoing construction projects

\$1.8 million
Added income

OR **23** Jobs supported

INVESTMENT ANALYSIS

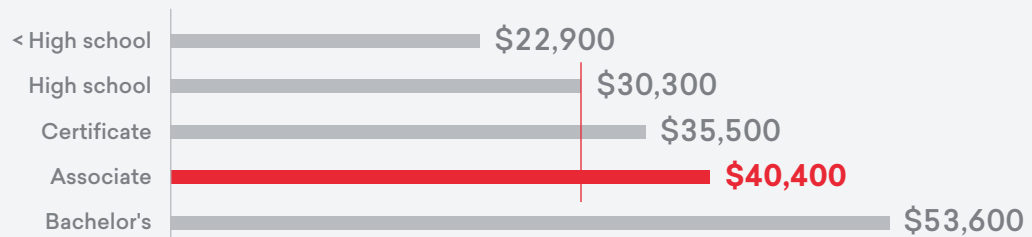
For every \$1...

Students gain **\$6.70** in lifetime earnings

Taxpayers gain **\$1.30** in added tax revenue and public sector savings

Society gains **\$7.90** in added income and social savings

The average associate degree graduate from Gateway will see an increase in earnings of **\$10,100** each year compared to someone with a high school diploma working in Wisconsin.



Sources: Emsi Burning Glass Economic Impact Study; <http://www.chicagotribune.com/news/opinion/commentary/ct-world-series-host-cities-economy-20151103-story.html>; <http://www.usatoday.com/story/money/cars/2015/05/04/new-car-transaction-price-3-kbb-kelley-blue-book/26690191/>; <http://www.usatoday.com/story/news/nation/2013/05/01/grocery-costs-for-family/2104165/>