



Bryan D. Albrecht, Ed.D.
President and CEO

October 12, 2022

Burlington Center
496 McCanna Pkwy.
Burlington, WI 53105-3623

Elkhorn Campus
400 County Road H
Elkhorn, WI 53121-2046

**HERO(Health And
Emergency Response
Occupations) Center**
380 McCanna Pkwy.
Burlington, WI 53105-3622

**Horizon Center For
Transportation
Technology**
4940 - 88th Avenue
Kenosha, WI 53144-7467

Inspire Center
3520 - 30th Avenue
Kenosha, WI 53144-1690

Kenosha Campus
3520 - 30th Avenue
Kenosha, WI 53144-1690

**Lakeview Advanced
Technology Center**
9449 - 88th Avenue (Highway H)
Pleasant Prairie, WI 53158-2216

Racine Campus
1001 South Main Street
Racine, WI 53403-1582

**SC Johnson
iMET (Integrated
Manufacturing
& Engineering
Technology) Center**
Renaissance Business Park
2320 Renaissance Blvd.
Sturtevant, WI 53177-1763

WGTD HD
Your Gateway to Public Radio
wgttd.org
262.564.3800

gtc.edu
800.247.7122

NOTICE OF MEETING

**GATEWAY TECHNICAL COLLEGE
DISTRICT BOARD
Regular Meeting
Thursday, October 20, 2022 – 8:00 a.m.
In-Person and Virtual Meeting
Elkhorn Campus, Rooms 112/114
400 County Road H, Elkhorn, WI 53121
Or by calling 1-312-626-6799
Meeting ID: 814 1973 5520**

The Gateway Technical College District Board will hold its regular meeting on Thursday, October 20, 2022 at 8:00 a.m. as an in-person and virtual meeting. The agenda is included. The public may attend in person or access the meeting using the conference call number listed above.

For virtual citizen comments please contact Kelly Bartlett at bartlettk@gtc.edu prior to the meeting.

During the regular meeting, the Gateway Technical College District Board will meet in closed session pursuant to Wisconsin Statutes 19.85(1)(c) to discuss employment and contract data. The Board reserves the right to reconvene in open session to take action on items discussed in closed session and to complete the remainder of the Board meeting agenda.

Bryan D. Albrecht, Ed.D.
President and Chief Executive Officer

GATEWAY TECHNICAL COLLEGE DISTRICT BOARD

Regular Meeting – Thursday, October 20, 2022 – 8:00 a.m.
 In-Person and Virtual Meeting - Elkhorn Campus, Rooms 112/114
 400 County Road H, Elkhorn, WI 53121
 Or by calling 1-312-626-6799, Meeting ID: 814 1973 5520

Info. / Disc	Action	Roll Call	AGENDA	Page
			I. Call to Order A. Open Meeting Compliance	4
		X	II. Roll Call	4
	X		III. Approval of Agenda	5
		X	IV. Closed Session The Gateway Technical College District Board will meet in closed session pursuant to Wisconsin Statutes 19.85(1)(c) to discuss employment and contract data. The Board reserves the right to reconvene in open session to take action on items discussed in closed session and to complete the remainder of the Board meeting agenda.	5
	X		V. Approval of Minutes A. September 22, 2022 – Regular Meeting	6
X			VI. Citizen Comments	10
X			VII. Chairperson’s Report A. Ad Hoc Committee Report	12
X			B. Dashboard Report	13
X			C. Board Evaluation Summary	14
X			VIII. Board Member Community Reports	15
X			IX. President’s Report A. Announcements	17
X			B. Review of Procurement Policy C-130 Apprenticeships Language Public Construction Contracts	18
X			X. Student Trustee Report	19
			XI. Operational Agenda	20
	X		A. Action Agenda	
	X		1. Review the Revision of Policy 1.9 Secretary’s Role	21
			2. Resolution Numbers B-2022 F.1 & F.2 – Approval of Project for the North Building Expansion – Elkhorn Campus, Elkhorn, Wisconsin	22
		X	3. FY 2021-22 Budget Revision #3	36
		X	4. FY 2022-23 Budget Revision #1	45
	X		5. Resolution Number M-2022 A – Designation of Assistant, Associate, and Deputy Directors	53
	X		B. Consent Agenda	
			1. Finance	
			a) Summary of Revenues and Expenditures	55
			b) Cash and Investment Schedules	63
			2. Personnel Report	67
			3. Grant Awards	70
			4. Contracts for Instructional Delivery	
			a) Business and Workforce Solutions	72
			b) Protective Services	75
			c) High School	78
			5. Advisory Committee Activity Report	83
			6. Annual Procurement Review	86
			XII. Policy Governance Monitoring Reports	90

Info. / Disc	Action	Roll Call	AGENDA		Page
	X			A. Ends Statement Monitoring 1) College Ends Policy - The tri-county community benefits from affordable higher education that allows residents to develop knowledge and skills for family-supporting careers that contribute to the growth and sustainability of the local economy at a cost commensurate with the value of services provided. #2 Businesses benefit from a well-trained, educated workforce and access to customized business and workforce solutions that support a positive business climate. Matt Janisin	91
	X			2) Policy Governance Review – Ends Policy, Statement #2	92
	X	X		B. Executive Limitations 1) 3.4 Budgeting/Forecasting – Tax Levy and Mill Rate Confirmation	94
	X			2) Policy Governance Review – 2.2 Presidential Accountability	96
X			XIII.	Next Meeting Date and Adjourn A. Regular Meeting - Thursday, November 17, 2022, 8:00 am, Virtual and In-Person, Racine Campus, Quad Rooms R102/R104 B. Adjourn	97
	X				97

GATEWAY TECHNICAL COLLEGE DISTRICT BOARD

Regular Meeting

Thursday, October 20, 2022 – 8:00 a.m.

In-Person and Virtual Meeting - Elkhorn Campus, Rooms 112/114

400 County Road H, Elkhorn, WI 53121

Or by calling 1-312-626-6799

Meeting ID: 814 1973 5520

- I. CALL TO ORDER
 - A. Open Meeting Compliance

- II. ROLL CALL

Jesse Adams	_____
Ram Bhatia	_____
Benjamin DeSmidt	_____
William Duncan	_____
Zaida Hernandez-Irisson	_____
Nicole Oberlin	_____
Scott Pierce	_____
Jason Tadlock	_____
Pamela Zenner-Richards	_____
Rebecca Matoska-Mentink	_____

Our Positive Core – Gateway Technical College District Board

Our shared strengths as a Board that we draw upon to do our work:

- Belief in the value of Gateway Technical College
- Commitment to our community
- Common sense of mission
- Mutual respect
- Sense of humor
- Open-mindedness & willingness to question

III. APPROVAL OF AGENDA

Items on the Consent Agenda for discussion

IV. CLOSED SESSION

The Gateway Technical College District Board will meet in closed session pursuant to Wisconsin Statutes 19.85(1)(c) to discuss employment and contract data. The Board reserves the right to reconvene in open session to take action on items discussed in closed session and to complete the remainder of the Board meeting agenda.

- V. APPROVAL OF MINUTES
 - A. September 22, 2022 – Regular Meeting

GATEWAY TECHNICAL COLLEGE DISTRICT BOARD
Regular Meeting, September 22, 2022

The Gateway Technical College District Board met virtually and in person at the Kenosha Campus, Madrigano Board Room, 3520 30th Avenue, Kenosha, WI on Thursday, September 22, 2022. The meeting was called to order at 8:00 a.m. by Pamela Zenner-Richards, Vice Chairperson.

Open Meeting Compliance

K. Bartlett confirmed the meeting was duly noticed in accordance with state statutes for open meeting compliance.

Roll Call

Present: Jesse Adams, Ram Bhatia, Benjamin DeSmidt, William Duncan, Zaida Hernandez-Irisson, Nicole Oberlin – Student Trustee, Scott Pierce, Jason Tadlock, Pamela Zenner-Richards,

Excused:, Rebecca Matoska-Mentink (arrived at 8:05 am virtual, 8:40 am in person)

Also in attendance were Bryan Albrecht, Kelly Bartlett, Liz Allen and 31 virtual and 18 in person citizens/reporters.

Approval of Agenda

It was moved by S. Pierce, seconded by W. Duncan and carried to approve the agenda.

Approval of Minutes

It was moved by R. Bhatia, seconded by Z. Hernandez-Irisson and carried to approve the minutes of the August 18, 2022 Regular Meeting.

Citizen Comments

There were no citizens comments.

Chairperson's Report

Ad Hoc Report: Scott Pierce gave an update on the search process and complimented Greenwood Asher. Jacqueline Morris reviewed the onboarding document for the upcoming president with the Trustees.

Dashboard Report items included updates on: Gene Haas Innovation Ally, Fall Semester start, and TID district closing.

Board Evaluation Summary: 4 of 7 Attending Trustees Responded to the Survey. These meetings are well planned and executed. Very worthwhile. Good meeting. Great presentations under President's Report.

Board Member Community Reports

The Board members spoke on events they've attended for the college and District Boards Association over the past month.

President's Report

Announcements

Bryan Albrecht welcomed Gateway Journey Member Elizabeth Rosiles-Zavala.

Bryan Albrecht spoke on topics that can be found on the monthly president's report at www.gtc.edu/about-gateway/board-trustees/presidents-reports

KABA Activities

Todd Battle gave a detailed presentation on KABA updates and activities.

Student Trustee Report

Nicole Oberlin reported on student activities that have been taking place over the past month.

Operational Agenda

Action Agenda – No items for approval.

Consent Agenda

It was moved by S. Pierce, seconded by P. Zenner-Richards and carried that the following items in the consent agenda be approved:

Finance:

Summary of Revenue and Expenditures: Approved the summary of revenue and expenditures as of August 31, 2022.

Cash and Investment Schedules: Approved the monthly cash reconciliation, investment schedule and investment report.

Personnel Report: Approved the personnel report of twenty four (24) employment approvals-casual, non-instructional; three (3) transfers; four (4) retirements; eight (8) separations; and no employment approvals-adjunct faculty.

Grant Awards: Approved the grant awards for September 2022

BWS Contracts for Instructional Delivery: Approved the contracts for instructional delivery report for September 2022.

Protective Services Contracts for Instructional Delivery: Approved the contracts for instructional delivery report for September 2022.

High School Contracts for Instructional Delivery: Approved the contracts for instructional delivery report for September 2022.

Advisory Committee Activity Report: Approved the advisory committee meeting schedule and new members as of September 1, 2022.

Policy Governance Monitoring Reports - Ends Policy Monitoring

College Ends Policy – The tri-county community benefits from affordable higher education that allows residents to develop knowledge and skills for family-supporting careers that contribute to the growth and sustainability of the local economy at a cost commensurate with the value of services provided.

Statement #5 Educational partners, locally, nationally, and internationally, connect their students to Gateway's well-developed career pathways courses, facilities, and educational resources.

Stacy Riley led a presentation on ends policy, statement 5.

Following discussion, it was moved by R. Bhatia seconded by S. Pierce and carried that this report is evidence that the college is making progress on Ends Policy, Statement #5.

Policy Governance Review

Ends Policy 4.1, Statement #5

The Trustees reviewed the wording of policy 4.1, statement #5

Following the discussion, it was moved by S. Pierce, seconded by Z. Hernandez-Irison and carried to approve the wording of Ends Policy 4.1, Statement #5.

Executive Limitations

3.5 Financial Condition – FY 2021-22 Year End Financial Review (unaudited)

Sharon Johnson presented on 3.5 Financial Condition FY 2021-22 Year-End Financial Review (unaudited).

Following the discussion, it was moved by J. Adams, seconded by W. Duncan and carried to approve 3.5 Financial Condition FY 2021-22 Year-End Financial Review (unaudited)

Policy Governance Review

3.5 Financial Condition

The Trustees reviewed the wording of policy 3.5 Financial Condition.

Following the discussion, it was moved by W. Duncan, seconded by P. Zenner-Richards and carried to approve the wording of 3.5 Financial Condition.

Policy Governance Review

2.1 Unity of Control

The Trustees reviewed the wording of policy 2.1 Unity of Control.

Following the discussion, it was moved by R. Bhatia, seconded by S. Pierce and carried to approve the wording of 2.1 Unity of Control.

Next Meeting Date and Adjourn

Regular Meeting – Thursday, October 20, 2022, 8:00 am, Virtual and In-Person, Elkhorn Campus, Rooms 112/114. At approximately 10:53 am it was moved by S. Pierce, seconded by W. Duncan and carried by roll call vote that the meeting was adjourned and the District Board move to executive session pursuant to Wisconsin Statutes 19.85(1)(c) to discuss personnel issues. The Board reserves the right to reconvene in open session to take action on items discussed in executive session.

Aye: 9

Nay: 0

Abstaining: 0

Absent: 0

Executive Session

The Board did not reconvene in open session. The meeting ended at 12:22 pm.

Zaida Hernandez-Irisson, Secretary
Gateway Technical College Board of Trustees

Kelly Bartlett
Recording Secretary

VI. CITIZEN COMMENTS

The Gateway Technical College District Board has established a limit of thirty minutes for citizen comments. Individuals will be limited to three to five minutes for their comments depending on the number of individuals who wish to address the Board. Citizens wishing to address the Board are to sign up prior to the meeting on the forms provided at the entrance to the meeting room.

- VII. CHAIRPERSON'S REPORT
 - A. Ad Hoc Committee Report
 - B. Dashboard Report
 - C. Board Evaluation Summary

GATEWAY TECHNICAL COLLEGE DISTRICT BOARD

Roll Call _____
Action _____
Information X
Discussion _____

CHAIRPERSON'S REPORT Ad Hoc Committee Report

Governance Process:
Board Liaison:

Policy 1.2 – Governing Philosophy
Rebecca Matoska-Mentink

GATEWAY TECHNICAL COLLEGE DISTRICT BOARD

Roll Call	_____
Action	_____
Information	<u> X </u>
Discussion	_____

CHAIRPERSON'S REPORT Dashboard Report

Governance Process:
Board Liaison:

Policy 1.2 – Governing Philosophy
Rebecca Matoska-Mentink

GATEWAY TECHNICAL COLLEGE DISTRICT BOARD

Roll Call _____
Action _____
Information X
Discussion _____

CHAIRPERSON'S REPORT Board Evaluation Summary

Governance Process:
Board Liaison:

Policy 1.2 – Governing Philosophy
Rebecca Matoska-Mentink

VIII. BOARD MEMBER COMMUNITY REPORTS

IX. PRESIDENT'S REPORT

A. Announcements

B. Review of Procurement Policy C-130 Apprenticeships Language Public
Construction Contracts

GATEWAY TECHNICAL COLLEGE DISTRICT BOARD

Roll Call _____
Action _____
Information X
Discussion _____

PRESIDENT'S REPORT **Announcements**

Policy/Ends Statement: Policy 2.1

GATEWAY TECHNICAL COLLEGE DISTRICT BOARD

Roll Call _____
Action _____
Information X
Discussion _____

PRESIDENT’S REPORT **Review of Procurement Policy C-130 Apprenticeships Language** **Public Construction Contracts**

The following language change is being recommended to administration for policy C-130.

"All bidders providing \$10,000 or more of labor shall be associated with one or more of Gateway Technical Colleges approved training programs or registered with a State or Federal licensed apprenticeship program. In addition, the contractor and each subcontractor shall employ apprentices from each building trade craft if they are available and appropriate for the nature of work as determined by Gateway Technical College. Such apprentices shall be properly indentured into a joint apprenticeship training program or other bona fide apprenticeship training program registered and certified with the State of Wisconsin, Department of Workforce Development, Bureau of apprenticeship Standards."

Policy/Ends Statement: Policy 2.1

X. STUDENT TRUSTEE REPORT

XI. OPERATIONAL AGENDA

A. Action Agenda

- 1) Review the Revision of Policy 1.9 Secretary's Role
- 2) Resolution Numbers B-2022 F.1 & F.2 – Approval of Project for the North Building Expansion – Elkhorn Campus, Elkhorn, Wisconsin
- 3) FY 2021-22 Budget Revision #3
- 4) FY 2022-23 Budget Revision #1
- 5) Resolution Number M-2022 A – Designation of Assistant, Associate, and Deputy Directors

B. Consent Agenda

- 1) Finance
 - a) Summary of Revenues and Expenditures
 - b) Cash and Investment Schedules
- 2) Personnel Report
- 3) Grant Awards
- 4) Contracts for Instructional Delivery
 - a) Business and Workforce Solutions
 - b) Protective Services
 - c) High School
- 5) Advisory Committee Activity Report
- 6) Annual Procurement Review

GATEWAY TECHNICAL COLLEGE DISTRICT BOARD

Roll Call	_____
Action	_____ X _____
Information	_____
Discussion	_____

Review 1.9 Secretary's Role

Summary of Item: Review the revision of Policy 1.9 Secretary's Role

SECTION 1 - GOVERNANCE PROCESS POLICY 1.9, SECRETARY'S ROLE

The Secretary is elected by the board.

1. The Secretary is designated as the official custodian of all official records of the District including the official signed copy of the President's employment contract. The Secretary shall delegate the day-to-day maintenance and custody of the records to the President of the College but may not delegate the accountability for these records. The President's contract shall be filed with Human Resources.
2. The Secretary shall sign all official documents and contracts on behalf of the District as required by law, by agencies with legitimate authority over college activities, and by the Board.
3. The Secretary shall be accountable to maintain a record and the official minutes of all meetings of the Board. The responsibility to create and maintain records and minutes shall be delegated to the President of the College.
4. The Secretary is accountable to perform additional functions by statute. The Secretary shall delegate these responsibilities to the President of the College but may not delegate the accountability for their completion:
 - a. Provide notice of Board vacancies and appointments to the Board Appointment Committee, County Boards, and the Gateway Board of Trustees.
 - b. Communicate with local governmental units regarding the annual tax levy amounts to be collected on behalf of the college.
 - c. Perform any functions assigned by statute to clerks of governmental units that are applicable to the college.
4. In the absence of both the Chairperson and the Vice Chairperson, the Secretary shall call the Board meeting to order and shall serve as Chairperson while the Board elects a Chairperson Pro Tempore.

Staff Liaison: John Thibodeau

GATEWAY TECHNICAL COLLEGE DISTRICT BOARD

Roll Call	_____
Action	___X___
Information	_____
Discussion	_____

RESOLUTION NUMBERS B-2022 F.1 and F.2 APPROVAL OF PROJECT FOR THE ELKHORN CAMPUS NORTH BUILDING EXPANSION

Summary of Item: The administration is recommending approval by the Gateway Technical College District Board of Resolution Numbers B-2022 F.1 and F.2 for the Elkhorn Campus North Building Expansion project.

The administration also recommends approval from the Wisconsin Technical College System (WTCS) Board for the Elkhorn Campus North Building Expansion project.

Attachments: Resolution Numbers B-2022 F.1 and F.2
Request for WTCS Board Approval of Project

Ends Statements and/or

Executive Limitations: Section 3 - Executive Limitation, Financial Condition Policy 3.5
Section 4 – Ends, College Ends Policy 4.1

Staff Liaison: John Thielen

Top1033.docx or .pdf 10/03/22

GATEWAY TECHNICAL COLLEGE

RESOLUTION NO. B-2022 F.1

WHEREAS, the Gateway Technical College District Board is proposing the project for the North Building Expansion - Elkhorn Campus, Elkhorn, WI to increase space for additional lecture rooms and;

WHEREAS, the Lincoln Building Expansion project - Racine Campus, Racine, WI consists of a building expansion of 4,620 square feet. The project cost is estimated at \$1,500,000.

NOW, THEREFORE, BE IT RESOLVED, that the Gateway Technical College Board, pursuant to 5.04(2)(a) of the Wisconsin Administrative Code, approves said project.

Rebecca Matoska-Mentink
Chairperson

Zaida Hernandez-Irisson
Secretary

October 20, 2022
Date

GATEWAY TECHNICAL COLLEGE

RESOLUTION NO. B-2022 F.2

WHEREAS, pursuant to 5.04(2)(a) of the Wisconsin Administrative Code, the Gateway Technical College District Board has approved the project for the North Building Expansion – Elkhorn Campus, Elkhorn, WI which consists of a building expansion of 4,620 square feet for to increase space for additional lecture rooms with a project cost estimate of \$1,500,000.

NOW, THEREFORE, BE IT RESOLVED that pursuant to 5.04(2)(b) of the Wisconsin Administrative Code, the Gateway Technical College District Board requests the Wisconsin Technical College System Board approve the project.

Rebecca Matoska-Mentink
Chairperson

Zaida Hernandez-Irisson
Secretary

October 20, 2022
Date

REQUEST FOR APPROVAL - EXPANSION

Wisconsin Technical College System Board

Project Title and Description:

Elkhorn Campus North Building Expansion

The Elkhorn Campus of Gateway Technical College is proposing to expand 4,620 square feet of the North Building to increase space for additional lecture rooms.

District: Gateway Technical College

Authorized Representative: John Thielen

Date Submitted: October 1, 2022

Date of Requested WTCSB Action: November 15, 2022

The following is a draft of the resolution on the agenda of the Gateway Board of Trustees October 20, 2022 meeting.

GATEWAY TECHNICAL COLLEGE

RESOLUTION NO. B-2022 F.1

WHEREAS, the Gateway Technical College District Board is proposing the project for the North Building Expansion - Elkhorn Campus, Elkhorn, WI to increase space for additional lecture rooms and;

WHEREAS, the Lincoln Building Expansion project - Racine Campus, Racine, WI consists of a building expansion of 4,620 square feet. The project cost is estimated at \$1,500,000.

NOW, THEREFORE, BE IT RESOLVED, that the Gateway Technical College Board, pursuant to 5.04(2)(a) of the Wisconsin Administrative Code, approves said project.

Rebecca Matoska-Mentink
Chairperson

Zaida Hernandez-Irisson
Secretary

October 20, 2022
Date

The following is a draft of the resolution on the agenda of the Gateway Board of Trustees October 20, 2022 meeting.

GATEWAY TECHNICAL COLLEGE

RESOLUTION NO. B-2022 F.2

WHEREAS, pursuant to 5.04(2)(a) of the Wisconsin Administrative Code, the Gateway Technical College District Board has approved the project for the North Building Expansion – Elkhorn Campus, Elkhorn, WI which consists of a building expansion of 4,620 square feet for to increase space for additional lecture rooms with a project cost estimate of \$1,500,000.

NOW, THEREFORE, BE IT RESOLVED that pursuant to 5.04(2)(b) of the Wisconsin Administrative Code, the Gateway Technical College District Board requests the Wisconsin Technical College System Board approve the project.

Rebecca Matoska-Mentink
Chairperson

Zaida Hernandez-Irisson
Secretary

October 20, 2022
Date

An electronic version of the required Environmental Assessment was submitted via email with this Request for Expansion.

Prior to the pandemic and now as the campus rebounds, the Elkhorn campus struggles for basic instructional space for the scheduled course sections. We frequently need to use the library, conference rooms and dedicated lab space for lecture classrooms.

Currently on the Elkhorn campus, of the twenty-six classroom and lab spaces in the Elkhorn North and South buildings, there are only six lecture rooms. This limited number of lecture rooms puts constraints on the days and times some lecture classes can be offered. Additionally, this impacts the availability of conference rooms 112 and 114 in the South building since, at times, we have to use those rooms as a lecture space. The addition of four multiple purpose lecture classrooms would increase classroom scheduling ability by sixty-six percent. This expansion for classroom space would meet the scheduling needs for the existing campus program and new ones.

With the approval of the new Liberal Arts and Science program, more courses sections will be scheduled on the Elkhorn campus. The School of Liberal Arts and Science projects a ten percent increase in both enrollment and course sections offering over the next three years.

This Fall, the six lecture classrooms are averaging room usage of 52%. 100% room usage is affected by the following constraints: varying instructional hours of each class, type of classes (lecture versus lab), start and end time of each class, faculty schedules, conflict free academic blocks and part time evening programs.

Evening course section scheduling provides for even more difficult challenges given the limited number of hours available and rooms.

Based on our scheduling pattern, a typical classroom has about nine hours of potential class time between the day time hours of 8:00 am and 5:00 pm. As for the evening, a typical classroom has at most five hours of potential class time between the hours of 5:00 pm and 10:00 pm. That is not considering some of the scheduling constraints mentioned above.

Room Utilization Hours	Monday	Tuesday	Wednesday	Thursday	Friday	Average Percentage Per week
Current Fall Semester	50%	58%	72%	51%	26%	52%
Projected 2023 Fall Semester	55%	63%	79%	56%	29%	56%
Current Fall Semester Evening	58%	64%	58%	48%	16%	48%
Projected 2023 Fall Semester Evening	63%	70%	63%	52%	17%	52%

Room Utilization Percentage	Room 133	Room 139	Room 213	Room 215	Room 217	Room 218	Annual Average Percentage
19/20	30%	34%	37%	36%	35%	33%	34%
20/21	25%	19%	54%	53%	55%	50%	43%
21/22	25%	27%	28%	24%	29%	28%	29%
22/23	17%	20%	27%	26%	23%	25%	23%

Elkhorn Campus Enrollment

Year	Elkhorn Headcount	Elkhorn HC %	Elkhorn FTE	Elkhorn FTE %
2017-18	2,608	12.60%	536.04	10.50%
2018-19	2,430	11.90%	515.27	10%
2019-20	2,338	11.60%	476.92	9.40%
2020-21	1,440	8.70%	202.45	4.50%
2021-22	1,598	8.75%	278.9	6.16%

Elkhorn Campus Projected Enrollment

Year	Elkhorn Headcount	Elkhorn HC %	Elkhorn FTE	Elkhorn FTE %
2022 -23	1,622	8.88%	283	6.25%
2023-24	1,646	9.0%	287	6.34%
2024-25	1,671	9.1%	291	6.43%
2025-26	1,696	9.23%	295	6.56%
2026-27	1,721	9.36%	299	6.6%

School of Liberal Arts and Sciences (Course Sections)

Year/Term	Summer	Fall	Spring	Total
2019-20	4	23	58	85
2020-21	0	48	14	62
2021-22	19	63	48	130
2022-23	11	58	61	130
2023-24	13	64	66	143
2024-25	15	69	73	157
2025-26	17	76	80	173

The proposed expansion will provide four lecture rooms, each at 614 sq. ft, and each for 24 students. Each of the four lecture rooms will have ADA student stations. The expansion also includes two utility rooms, each at 477 sq. ft., a corridor connecting to the existing North Building, and new exterior doors.

The original North Building on the Elkhorn campus was built in 1989, with two additions added in 1994 and a third addition added in 2011.

The expansion will include new duct work, VAV boxes, and air distribution devices to serve the new addition. The expansion includes five new VAV boxes, one box for each classroom, and one box for the main corridor. The VAV boxes will be served by a new AHU located in new utility room. The new AHU will be provided as part of a separate hvac upgrade project. Hot water runtal style baseboard will be provided at the classroom perimeter walls with separate zones for each classroom. The baseboard will have controls that interlock with the associated VAV box. A new ceiling mounted hot water cabinet unit heater will serve the entryway. New hot water unit heaters will be provided in a utility room. New automated HVAC controls will be provided for the new HVAC equipment including VAV boxes, baseboards, and unit heaters.

The proposed expansion includes new LED light fixtures, primarily consisting of 2x2 and 2x4 Lithonia lay-in grid commercial light fixtures installed in the classrooms and pendant fixtures in the exposed corridor. New Exit and Emergency Egress lighting will be provided. New lighting circuits will be provided. Lighting occupancy sensors will be tied into the existing automated building controls to be used for occupancy control sequences for the VAV boxes. Control of lighting will be via the Acuity brand nLight system controls. These controls will consist of dimming switches, occupancy/vacancy sensors, and daylight sensors. All new components from the Acuity brand nLight control system will be provide with components to tie into the building automation system. The lighting power density will be designed to meet or exceed LEED standards for the project. The project includes a new 110A, 3 Pole circuit breaker in the existing 480v MDP located in the main mechanical room serving a new 75KW transformer. The secondary side of transformer will feed one 208v/120v, 225 Amp, 3 Phase, 4-Wire panel located in a new utility room. New duplex receptacles and junction boxes will be provided. GFCI duplexes will be provided in all areas required by code.

New ceiling mounted fire alarm speaker/strobes shall be provided. These devices will be connected to an existing NAC panel and existing building Fire Alarm Control System.

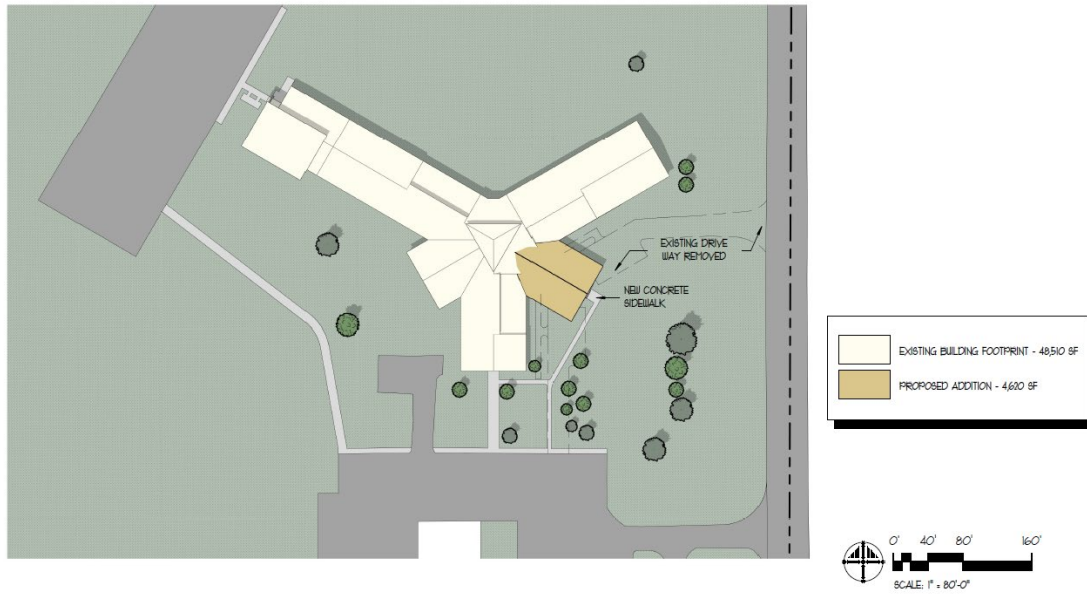
New data connections will be provided for security cameras, wireless access points, emergency beacons, digital displays, office desks, workstations and printers. All data drops will terminate at an existing IT closet to the west of addition. Card readers and electric strikes will be provided at each classroom and the exterior doors.

All of the funds will come from the proposed sale of bonds or notes. The District engages the services of bond counsel to provide a statement of statutory compliance.

The estimated project cost follows.

Elkhorn North Building Expansion		
TCS 5.04(4)(h)	Description	Budget
1	General Construction	\$ 60,000.00
2	Heating, ventilation and AC	\$ 130,000.00
3	Electrical	\$ 164,000.00
4	Plumbing	\$ 20,000.00
5	Other contracts:	
	Demolition	\$ 5,000.00
	Earthwork & Site utilities	\$ 65,000.00
	Concrete	\$ 94,000.00
	Asphalt Paving	\$ -
	Lanscaping (Allowance)	\$ 5,000.00
	Masonry	\$ 91,000.00
	Metals	\$ 126,000.00
	Woods & Plastic	\$ 32,000.00
	Doors & Windows	\$ 83,000.00
	Finishes	\$ 137,000.00
	Roofing Work	\$ 82,000.00
	Sealants / Firestopping	\$ 8,000.00
	Fire Protection	\$ -
6	Equipment	\$ -
7	Miscellaneous cost	\$ 10,000.00
	Supervision	\$ 130,000.00
	Contingency	\$ 70,000.00
	General Liability Insurance	\$ 2,000.00
	General Contractor Fees	\$ 46,000.00
	Performance Bond	\$ 11,000.00
8	Fees & Permits	\$ 12,000.00
	TOTAL CONSTRUCTION:	\$ 1,383,000.00
	Asbestos Abatement & Security Modifications	\$ 20,000.00
	TOTAL OWNER ALLOWANCE:	\$ 20,000.00
	Architectural & Engineering	\$ 91,000.00
	Reimbursable	\$ 2,000.00
	Commissioning & Arc Flash/Fault Current	\$ 4,000.00
	TOTAL A&E FEES:	\$ 97,000.00
TOTAL PROJECT COST:		\$ 1,500,000.00

Electronic versions of the following plans were submitted via email with this request for expansion.



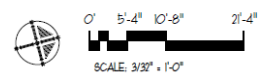
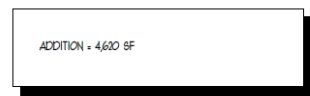
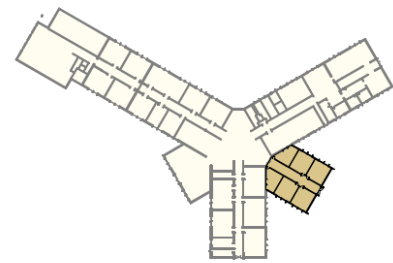
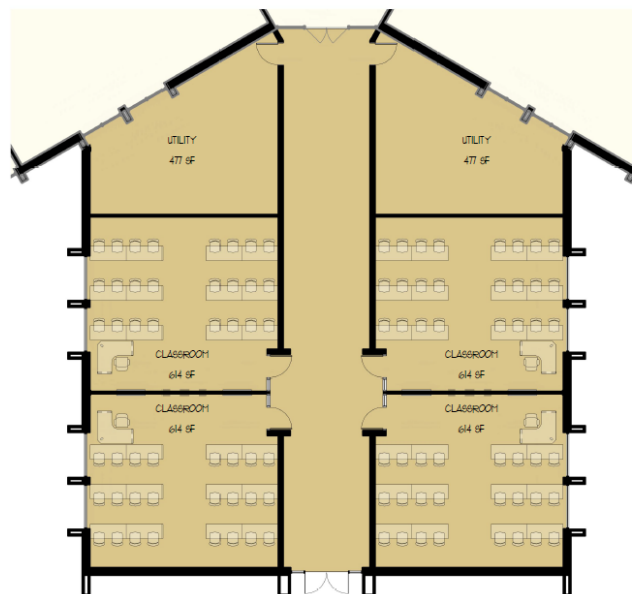
NORTH BUILDING EXPANSION

Gateway Technical College - Elkhorn Campus

© 2022 Partners in Design Architects, Inc.

GENERAL EDUCATION CLASSROOMS
 SITE PLAN
 09.16.2022 - OPTION C

262.652.2800
 Kenosha, WI
 847.940.0300
 Riverwoods, IL



NORTH BUILDING EXPANSION

Gateway Technical College - Elkhorn Campus

© 2022 Partners in Design Architects, Inc.

GENERAL EDUCATION CLASSROOMS
 FLOOR PLAN
 09.16.2022 - OPTION C

262.652.2800
 Kenosha, WI
 847.940.0300
 Riverwoods, IL



Partners*in***Design**
A R C H I T E C T S

September 15, 2022

Mr. John Thielen
Gateway Technical College
Director of Capital Project
3520 30th Avenue
Kenosha, Wisconsin 53144

RE: Elkhorn Campus North Building Expansion

Dear Mr. Thielen:

In response to the WTCS Board Policy 706, Sustainable Facilities, I am providing this confirmation that the Elkhorn Campus North Building Expansion project will be designed and engineered with the intent of this policy in mind. For your review and explanation of our intent we will be following the guide lines set in LEED 2009 for BD+C: New Construction and Major Renovation. We will be focusing on the following categories: Water Efficiency, Energy and Atmosphere, Materials and Resources, and Indoor Environmental Quality.

Recognizing that Gateway will not be certifying the building through the U.S. Green Building council (USGBC) and any final decision relative to the awarding of points, is the decision of the USGBC, we cannot definitively provide a point range for the expansion design.

Sincerely,

Jeffrey E. Bridleman, AIA



LEED 2009 for New Construction and Major Renovations
Project Checklist

GTC - Lincoln Building Expansion
8.31.2020

15 11 Sustainable Sites Possible Points: 26

Y	?	N	Prereq	Description	Points
1			Prereq 1	Construction Activity Pollution Prevention	
			Credit 1	Site Selection	1
	5		Credit 2	Development Density and Community Connectivity	5
		1	Credit 3	Brownfield Redevelopment	1
6			Credit 4.1	Alternative Transportation—Public Transportation Access	6
1			Credit 4.2	Alternative Transportation—Bicycle Storage and Changing Rooms	1
3			Credit 4.3	Alternative Transportation—Low-Emitting and Fuel-Efficient Vehicles	3
2			Credit 4.4	Alternative Transportation—Parking Capacity	2
1			Credit 5.1	Site Development—Protect or Restore Habitat	1
1			Credit 5.2	Site Development—Maximize Open Space	1
	1		Credit 6.1	Stormwater Design—Quantity Control	1
	1		Credit 6.2	Stormwater Design—Quality Control	1
	1		Credit 7.1	Heat Island Effect—Non-roof	1
	1		Credit 7.2	Heat Island Effect—Roof	1
	1		Credit 8	Light Pollution Reduction	1

2 4 4 Water Efficiency Possible Points: 10

Y	?	N	Prereq	Description	Points
2		2	Prereq 1	Water Use Reduction—20% Reduction	
			Credit 1	Water Efficient Landscaping	2 to 4
			Credit 2	Innovative Wastewater Technologies	2
	4		Credit 3	Water Use Reduction	2 to 4

9 6 18 Energy and Atmosphere Possible Points: 35

Y	?	N	Prereq	Description	Points
			Prereq 1	Fundamental Commissioning of Building Energy Systems	
			Prereq 2	Minimum Energy Performance	
			Prereq 3	Fundamental Refrigerant Management	
7	6	4	Credit 1	Optimize Energy Performance	1 to 19
		7	Credit 2	On-Site Renewable Energy	1 to 7
		2	Credit 3	Enhanced Commissioning	2
2			Credit 4	Enhanced Refrigerant Management	2
		3	Credit 5	Measurement and Verification	3
		2	Credit 6	Green Power	2

8 6 Materials and Resources Possible Points: 14

Y	?	N	Prereq	Description	Points
			Prereq 1	Storage and Collection of Recyclables	
		3	Credit 1.1	Building Reuse—Maintain Existing Walls, Floors, and Roof	1 to 3
1			Credit 1.2	Building Reuse—Maintain 50% of Interior Non-Structural Elements	1
2			Credit 2	Construction Waste Management	1 to 2
		2	Credit 3	Materials Reuse	1 to 2

Materials and Resources, Continued

Y	?	N	Prereq	Description	Points
2			Credit 4	Recycled Content	1 to 2
2			Credit 5	Regional Materials	1 to 2
		1	Credit 6	Rapidly Renewable Materials	1
1			Credit 7	Certified Wood	1

9 6 Indoor Environmental Quality Possible Points: 15

Y	?	N	Prereq	Description	Points
			Prereq 1	Minimum Indoor Air Quality Performance	
			Prereq 2	Environmental Tobacco Smoke (ETS) Control	
1			Credit 1	Outdoor Air Delivery Monitoring	1
			Credit 2	Increased Ventilation	1
		1	Credit 3.1	Construction IAQ Management Plan—During Construction	1
		1	Credit 3.2	Construction IAQ Management Plan—Before Occupancy	1
1			Credit 4.1	Low-Emitting Materials—Adhesives and Sealants	1
1			Credit 4.2	Low-Emitting Materials—Paints and Coatings	1
1			Credit 4.3	Low-Emitting Materials—Flooring Systems	1
1			Credit 4.4	Low-Emitting Materials—Composite Wood and Agrifiber Products	1
1			Credit 5	Indoor Chemical and Pollutant Source Control	1
1			Credit 6.1	Controllability of Systems—Lighting	1
1			Credit 6.2	Controllability of Systems—Thermal Comfort	1
		1	Credit 7.1	Thermal Comfort—Design	1
		1	Credit 7.2	Thermal Comfort—Verification	1
1			Credit 8.1	Daylight and Views—Daylight	1
1			Credit 8.2	Daylight and Views—Views	1

1 5 Innovation and Design Process Possible Points: 6

Y	?	N	Prereq	Description	Points
			Prereq 1	Innovation in Design: Specific Title	1
			Prereq 2	Innovation in Design: Specific Title	1
			Prereq 3	Innovation in Design: Specific Title	1
			Prereq 4	Innovation in Design: Specific Title	1
			Prereq 5	Innovation in Design: Specific Title	1
			Prereq 6	Innovation in Design: Specific Title	1
1			Credit 2	LEED Accredited Professional	1

4 Regional Priority Credits Possible Points: 4

Y	?	N	Prereq	Description	Points
1			Credit 1.1	Regional Priority: Specific Credit	1
1			Credit 1.2	Regional Priority: Specific Credit	1
1			Credit 1.3	Regional Priority: Specific Credit	1
1			Credit 1.4	Regional Priority: Specific Credit	1

48 21 39 Total Possible Points: 110

Certified 40 to 49 points Silver 50 to 59 points Gold 60 to 79 points Platinum 80 to 110

GATEWAY TECHNICAL COLLEGE DISTRICT BOARD

Roll Call	_X_
Action	___
Information	___
Discussion	___

FY 2021-2022 BUDGET REVISION #3

Summary of Item:

Administration is recommending approval to amend the fiscal year 2022 budget based on year-end results. The FY 2021-22 budget requires revisions in three separate funds. The General Fund, the Special Revenue – Operational Fund, and the Capital Fund require year-end revisions to balance the fund by function.

Budget Modification

GENERAL FUND

A budget revision is recommended to ensure compliance of balancing by function.

		<u>Increase/(Decrease)</u>
<u>Uses</u>		
Student Services	\$	(250,000)
General Institutional	\$	1,037
Physical Plant	\$	248,963

Budget Reclassification

GENERAL FUND

A budget revision is recommended to reflect the reclassification of General Fund Reserves to Reserve for Post-Employment Benefits.

		<u>Increase/(Decrease)</u>
<u>Resources/Revenues</u>		
Transfer from reserves	\$	1,000,000
<u>Uses/Expenditures</u>		
Transfer to Reserves for Post Employment Benefits	\$	1,000,000

Budget Modification

SPECIAL REVENUE-OPERATIONAL FUND

A budget revision is recommended to ensure compliance of balancing by function.

		<u>Increase/(Decrease)</u>
<u>Resources</u>		
Institutional	\$	167,564
<u>Uses</u>		
Instruction	\$	147,564
Public Services		20,000

Budget Modification

CAPITAL FUND

A budget revision is recommended to ensure compliance of balancing by function.

		<u>Increase/(Decrease)</u>
<u>Resources</u>		
Transfer from Reserves	\$	995,000
<u>Uses</u>		
Instruction	\$	995,000

GATEWAY TECHNICAL COLLEGE DISTRICT BOARD

Roll Call X
Action
Information
Discussion

FY 2021-2022 BUDGET REVISION #3 (continued)

Attachment: FY 2021-2022 Budget Revision #3

**Ends Statements /
Executive Limitations:** Budgeting/Forecasting Policy 3.4

Gateway Staff Liaison: Jason Nygard

ROLL CALL

Jesse Adams
Ram Bhatia
Benjamin DeSmidt
William Duncan
Zaida Hernandez-Irisson
Scott Pierce
Jason Tadlock
Pamela Zenner-Richards
Rebecca Matoska-Mentink

FY 2021-22 Budget Revision #3 – October 20 2022 Bd Mtg.docx 10/07/22

FISCAL YEAR: 2021-22

DISTRICT: GATEWAY

10/20/22

FUND: COMBINED

<u>RESOURCES</u>	MODIFIED BUDGET ADOPTED 04/14/22	CURRENT BUDGET ADOPTED 10/20/22	CHANGE
DESIGNATED FUND BALANCE	-	-	
REVENUES			
TAX LEVY	\$ 38,143,376	\$ 38,143,376	\$ -
STATE AID	45,918,267	45,918,267	-
OTHER STATE	122,369	122,369	-
PROGRAM FEES	14,248,553	14,248,553	-
MATERIAL FEES	724,775	724,775	-
OTHER STUDENT FEES	2,585,986	2,585,986	-
INSTITUTIONAL	9,825,520	9,993,084	167,564
FEDERAL REVENUE	29,841,454	29,841,454	-
TOTAL REVENUE	141,410,300	141,577,864	167,564
OTHER FUNDING SOURCES			
PROCEEDS FROM DEBT	15,580,000	15,580,000	-
OPERATING TRANSFERS IN	2,385,618	2,385,618	-
TRANSFER FROM RESERVES	3,835,618	5,830,618	1,995,000
TOTAL RESOURCES	\$ 163,211,536	\$ 165,374,100	\$ 2,162,564
 <u>USES</u>			
INSTRUCTION	\$ 66,930,256	\$ 68,072,820	\$ 1,142,564
INSTR. RESOURCES	1,193,376	1,193,376	-
STUDENT SERVICES	42,954,479	42,704,479	(250,000)
GENERAL INSTITUTIONAL	14,191,219	14,192,256	1,037
PHYSICAL PLANT	34,416,088	34,665,051	248,963
AUXILIARY SERVICES	725,000	725,000	-
PUBLIC SERVICES	415,500	435,500	20,000
TOTAL EXPENDITURES	160,825,918	161,988,482	1,162,564
OTHER USES			
OPERATING TRANSFERS OUT	2,385,618	2,385,618	-
TRANSFER TO RESERVES	-	1,000,000	1,000,000
TOTAL USES	\$ 163,211,536	\$ 165,374,100	\$ 2,162,564

FISCAL YEAR: 2021-22

DISTRICT: GATEWAY

10/20/22

FUND: GENERAL

<u>RESOURCES</u>	MODIFIED BUDGET ADOPTED 04/14/22	CURRENT BUDGET ADOPTED 10/20/22	CHANGE
DESIGNATED FUND BALANCE			
REVENUES			
TAX LEVY	\$ 20,295,171	\$ 20,295,171	\$ -
STATE AID	42,213,215	42,213,215	-
OTHER STATE	122,369	122,369	-
PROGRAM FEES	14,248,553	14,248,553	-
MATERIAL FEES	724,775	724,775	-
OTHER STUDENT FEES	1,497,986	1,497,986	-
FEDERAL REVENUE	30,748	30,748	-
INSTITUTIONAL	6,472,520	6,472,520	-
TOTAL REVENUE	85,605,337	85,605,337	-
OTHER FUNDING SOURCES			
PROCEEDS FROM DEBT	-	-	-
OPERATING TRANSFERS - IN	2,385,618	2,385,618	-
TRANSFER FROM RESERVES	1,000,000	2,000,000	1,000,000
TOTAL RESOURCES	\$ 88,990,955	\$ 89,990,955	\$ 1,000,000
 <u>USES</u>			
INSTRUCTION	\$ 58,640,420	\$ 58,640,420	\$ -
INSTR. RESOURCES	1,178,376	1,178,376	-
STUDENT SERVICES	12,770,822	12,520,822	(250,000)
GENERAL INSTITUTIONAL	8,935,749	8,936,786	1,037
PHYSICAL PLANT	7,465,588	7,714,551	248,963
AUXILIARY SERVICES	-	-	-
PUBLIC SERVICES	-	-	-
TOTAL EXPENDITURES	88,990,955	88,990,955	-
OTHER USES			
OPERATING TRANSFERS - OUT	-	-	-
TRANSFER TO RESERVES	-	1,000,000	1,000,000
TOTAL USES	\$ 88,990,955	\$ 89,990,955	\$ 1,000,000

FISCAL YEAR: 2021-22

DISTRICT: GATEWAY

10/20/22

FUND: SPECIAL REVENUE - OPERATIONAL FUND

<u>RESOURCES</u>	MODIFIED BUDGET ADOPTED 04/14/22	CURRENT BUDGET ADOPTED 10/20/22	CHANGE
DESIGNATED FUND BALANCE			
REVENUES			
TAX LEVY	\$ 2,049,205	\$ 2,049,205	\$ -
STATE AID	1,655,452	1,655,452	-
PROGRAM FEES	-	-	-
MATERIAL FEES	-	-	-
OTHER STUDENT FEES	-	-	-
FEDERAL REVENUE	4,346,706	4,346,706	-
INSTITUTIONAL	165,500	333,064	167,564
TOTAL REVENUE	8,216,863	8,384,427	167,564
OTHER FUNDING SOURCES			
PROCEEDS FROM DEBT			
OPERATING TRANSFERS - IN	-	-	-
TRANSFER FROM RESERVES	2,385,618	2,385,618	-
TOTAL RESOURCES	\$ 10,602,481	\$ 10,770,045	\$ -
 <u>USES</u>			
INSTRUCTION	\$ 3,602,436	\$ 3,750,000	\$ 147,564
INSTR. RESOURCES	-	-	-
STUDENT SERVICES	2,323,057	2,323,057	-
GENERAL INSTITUTIONAL	1,500,870	1,500,870	-
PHYSICAL PLANT	400,000	400,000	-
AUXILIARY SERVICES	-	-	-
PUBLIC SERVICES	390,500	410,500	20,000
TOTAL EXPENDITURES	8,216,863	8,384,427	167,564
OTHER USES			
OPERATING TRANSFERS - OUT	2,385,618	2,385,618	-
TRANSFER TO RESERVES	-	-	-
TOTAL USES	\$ 10,602,481	\$ 10,770,045	\$ 167,564

FISCAL YEAR: 2021-22

DISTRICT: GATEWAY

10/20/22

FUND: SPECIAL REVENUE - NON AIDABLE

<u>RESOURCES</u>	MODIFIED BUDGET ADOPTED 04/14/22	CURRENT BUDGET ADOPTED 10/20/22	CHANGE
DESIGNATED FUND BALANCE			
REVENUES			
TAX LEVY	\$ -	\$ -	\$ -
STATE AID	1,849,600	1,849,600	-
PROGRAM FEES	-	-	-
MATERIAL FEES	-	-	-
OTHER STUDENT FEES	868,000	868,000	-
INSTITUTIONAL	2,572,500	2,572,500	-
FEDERAL REVENUE	22,564,000	22,564,000	-
TOTAL REVENUE	27,854,100	27,854,100	-
OTHER FUNDING SOURCES			
PROCEEDS FROM DEBT			
OPERATING TRANSFERS - IN	-	-	-
TRANSFER FROM RESERVES	-	-	-
TOTAL RESOURCES	\$ 27,854,100	\$ 27,854,100	\$ -
 <u>USES</u>			
INSTRUCTION	\$ -	\$ -	\$ -
INSTR. RESOURCES	-	-	-
STUDENT SERVICES	27,810,600	27,810,600	-
GENERAL INSTITUTIONAL	43,500	43,500	-
PHYSICAL PLANT	-	-	-
AUXILIARY SERVICES	-	-	-
PUBLIC SERVICES	-	-	-
TOTAL EXPENDITURES	27,854,100	27,854,100	-
OTHER USES			
OPERATING TRANSFERS - OUT	-	-	-
TRANSFER TO RESERVES	-	-	-
TOTAL USES	\$ 27,854,100	\$ 27,854,100	\$ -

FISCAL YEAR: 2021-22

DISTRICT: GATEWAY

10/20/22

FUND: CAPITAL PROJECTS

<u>RESOURCES</u>	MODIFIED BUDGET ADOPTED 04/14/22	CURRENT BUDGET ADOPTED 10/20/22	CHANGE
DESIGNATED FUND BALANCE			
REVENUES			
TAX LEVY-(TIF Refund)	\$ -	\$ -	\$ -
STATE AID	200,000	200,000	-
PROGRAM FEES	-	-	-
MATERIAL FEES	-	-	-
OTHER STUDENT FEES	-	-	-
FEDERAL REVENUE	2,900,000	2,900,000	-
INSTITUTIONAL	150,000	150,000	-
TOTAL REVENUE	3,250,000	3,250,000	-
OTHER FUNDING SOURCES			
PROCEEDS FROM DEBT	15,000,000	15,000,000	-
OPERATING TRANSFERS - IN	-	-	-
TRANSFER FROM RESERVES	-	995,000	995,000
TOTAL RESOURCES	\$ 18,250,000	\$ 19,245,000	\$ 995,000
 <u>USES</u>			
INSTRUCTION	\$ 4,505,000	\$ 5,500,000	\$ 995,000
INSTR. RESOURCES	15,000	15,000	-
STUDENT SERVICES	50,000	50,000	-
GENERAL INSTITUTIONAL	3,480,000	3,480,000	-
PHYSICAL PLANT	10,175,000	10,175,000	-
AUXILIARY SERVICES	-	-	-
PUBLIC SERVICES	25,000	25,000	-
TOTAL EXPENDITURES	18,250,000	19,245,000	995,000
OTHER USES			
OPERATING TRANSFERS - OUT	-	-	-
TRANSFER TO RESERVES	-	-	-
TOTAL USES	\$ 18,250,000	\$ 19,245,000	\$ 995,000

FISCAL YEAR: 2021-22

DISTRICT: GATEWAY

10/20/22

FUND: DEBT SERVICE

<u>RESOURCES</u>	MODIFIED BUDGET ADOPTED 04/14/22	CURRENT BUDGET ADOPTED 10/20/22	CHANGE
DESIGNATED FUND BALANCE			
REVENUES			
TAX LEVY	\$ 15,754,000	\$ 15,754,000	\$ -
STATE AID	-	-	-
OTHER STATE	-	-	-
PROGRAM FEES	-	-	-
MATERIAL FEES	-	-	-
OTHER STUDENT FEES	-	-	-
INSTITUTIONAL	5,000	5,000	-
FEDERAL REVENUE	-	-	\$ -
TOTAL REVENUE	15,759,000	15,759,000	-
OTHER FUNDING SOURCES			
PROCEEDS FROM DEBT	580,000	580,000	-
OPERATING TRANSFERS - IN	-	-	-
TRANSFER FROM RESERVES	450,000	450,000	-
TOTAL RESOURCES	\$ 16,789,000	\$ 16,789,000	\$ -
 <u>USES</u>			
INSTRUCTION	\$ 182,400	\$ 182,400	\$ -
INSTR. RESOURCES	-	-	-
STUDENT SERVICES	-	-	-
GENERAL INSTITUTIONAL	231,100	231,100	-
PHYSICAL PLANT	16,375,500	16,375,500	-
AUXILIARY SERVICES	-	-	-
PUBLIC SERVICES	-	-	-
TOTAL EXPENDITURES	16,789,000	16,789,000	-
OTHER USES			
OPERATING TRANSFERS - OUT	-	-	-
TRANSFER TO RESERVES	-	-	-
TOTAL USES	\$ 16,789,000	\$ 16,789,000	\$ -

FISCAL YEAR: 2021-22

DISTRICT: GATEWAY

10/20/22

FUND: ENTERPRISE FUND

<u>RESOURCES</u>	MODIFIED BUDGET ADOPTED 04/14/22	CURRENT BUDGET ADOPTED 10/20/22	CHANGE
DESIGNATED FUND BALANCE			
REVENUES			
TAX LEVY	\$ 45,000	\$ 45,000	\$ -
STATE AID	-	-	-
PROGRAM FEES	-	-	-
MATERIAL FEES	-	-	-
OTHER STUDENT FEES	220,000	220,000	-
INSTITUTIONAL	460,000	460,000	-
FEDERAL REVENUE	-	-	-
TOTAL REVENUE	725,000	725,000	-
OTHER FUNDING SOURCES			
PROCEEDS FROM DEBT	-	-	-
OPERATING TRANSFERS - IN	-	-	-
TRANSFER FROM RESERVES	-	-	-
TOTAL RESOURCES	\$ 725,000	\$ 725,000	\$ -
 <u>USES</u>			
INSTRUCTION	\$ -	\$ -	\$ -
INSTR. RESOURCES	-	-	-
STUDENT SERVICES	-	-	-
GENERAL INSTITUTIONAL	-	-	-
PHYSICAL PLANT	-	-	-
AUXILIARY SERVICES	725,000	725,000	-
PUBLIC SERVICES	-	-	-
TOTAL EXPENDITURES	725,000	725,000	-
OTHER USES			
OPERATING TRANSFERS - OUT	-	-	-
TRANSFER TO RESERVES	-	-	-
TOTAL USES	\$ 725,000	\$ 725,000	\$ -

GATEWAY TECHNICAL COLLEGE DISTRICT BOARD

Roll Call X
 Action
 Information
 Discussion

FY 2022-2023 BUDGET REVISION #1

Summary of Item:

The FY 2022-23 budget requires a revision in the General Fund. The revision in the General Fund will reflect final Net New Construction, an adjustment for Refunded/Rescinded Taxes, and an adjustment in State Aid. These funds will be used to offset minor adjustments to the FY22-23 budget

Budget Modification

GENERAL FUND

The revision in the General Fund will reflect final Net New Construction, an adjustment for Refunded/Rescinded Taxes, and an adjustment in State Aid. These funds will be used to offset minor adjustments to the FY22-23 budget.

Resources

			<u>Increase/(Decrease)</u>
Local Government			
Net New Construction	\$		87,188
Refunded/Rescinded Tax	\$		(17,757)
State Aid			
Personal Property Aid	\$		19,634
Exempt Computer Aid	\$		15,232

Uses

Instruction	\$		27,000
General Institutional	\$		77,297

Attachment:

FY 2022-23 Budget Revision #1

Ends Statements /

Executive Limitations:

Budgeting/Forecasting Policy 3.4

Gateway Staff Liaison:

Jason Nygard

ROLL CALL

Jesse Adams _____
 Ram Bhatia _____
 Benjamin DeSmidt _____
 William Duncan _____
 Zaida Hernandez-Irisson _____
 Scott Pierce _____

Jason Tadlock _____
 Pamela Zenner-Richards _____
 Rebecca Matoska-Mentink _____

FISCAL YEAR: 2022-23

DISTRICT: GATEWAY

10/20/22

FUND: COMBINED

<u>RESOURCES</u>	ORIGINAL BUDGET ADOPTED 06/16/22	MODIFIED BUDGET ADOPTED 10/20/22	CHANGE
DESIGNATED FUND BALANCE	-	-	
REVENUES			
TAX LEVY	\$ 38,631,663	\$ 38,701,094	\$ 69,431
STATE AID	47,687,221	47,706,855	19,634
OTHER STATE	122,369	137,601	15,232
PROGRAM FEES	14,306,572	14,306,572	-
MATERIAL FEES	727,750	727,750	-
OTHER STUDENT FEES	2,596,961	2,596,961	-
INSTITUTIONAL	9,828,146	9,828,146	-
FEDERAL REVENUE	26,628,033	26,628,033	-
TOTAL REVENUE	140,528,715	140,633,012	104,297
OTHER FUNDING SOURCES			
PROCEEDS FROM DEBT	13,560,000	13,560,000	-
OPERATING TRANSFERS IN	2,125,000	2,125,000	-
TRANSFER FROM RESERVES	1,053,446	1,053,446	-
TOTAL RESOURCES	\$ 157,267,161	\$ 157,371,458	\$ 104,297
 <u>USES</u>			
INSTRUCTION	\$ 69,174,277	\$ 69,201,277	\$ 27,000
INSTR. RESOURCES	1,177,935	1,177,935	-
STUDENT SERVICES	39,267,106	39,267,106	-
GENERAL INSTITUTIONAL	11,943,586	12,020,883	77,297
PHYSICAL PLANT	32,538,757	32,538,757	-
AUXILIARY SERVICES	625,000	625,000	-
PUBLIC SERVICES	415,500	415,500	-
TOTAL EXPENDITURES	155,142,161	155,246,458	104,297
OTHER USES			
OPERATING TRANSFERS OUT	2,125,000	2,125,000	-
TRANSFER TO RESERVES	-	-	-
TOTAL USES	\$ 157,267,161	\$ 157,371,458	\$ 104,297

FISCAL YEAR: 2022-23

DISTRICT: GATEWAY

10/20/22

FUND: GENERAL

<u>RESOURCES</u>	ORIGINAL BUDGET ADOPTED 06/16/22	MODIFIED BUDGET ADOPTED 10/20/22	CHANGE
DESIGNATED FUND BALANCE			
REVENUES			
TAX LEVY	\$ 20,416,663	\$ 20,486,094	\$ 69,431
STATE AID	43,640,928	43,660,562	19,634
OTHER STATE	122,369	137,601	15,232
PROGRAM FEES	14,306,572	14,306,572	-
MATERIAL FEES	727,750	727,750	-
OTHER STUDENT FEES	1,603,961	1,603,961	-
FEDERAL REVENUE	30,000	30,000	-
INSTITUTIONAL	6,788,646	6,788,646	-
TOTAL REVENUE	87,636,889	87,741,186	104,297
OTHER FUNDING SOURCES			
PROCEEDS FROM DEBT	-	-	-
OPERATING TRANSFERS - IN	2,125,000	2,125,000	-
TRANSFER FROM RESERVES	1,000,000	1,000,000	-
TOTAL RESOURCES	\$ 90,761,889	\$ 90,866,186	\$ 104,297
 <u>USES</u>			
INSTRUCTION	\$ 60,474,108	\$ 60,501,108	\$ 27,000
INSTR. RESOURCES	1,162,935	1,162,935	-
STUDENT SERVICES	12,572,500	12,572,500	-
GENERAL INSTITUTIONAL	9,002,035	9,079,332	77,297
PHYSICAL PLANT	7,550,311	7,550,311	-
AUXILIARY SERVICES	-	-	-
PUBLIC SERVICES	-	-	-
TOTAL EXPENDITURES	90,761,889	90,866,186	104,297
OTHER USES			
OPERATING TRANSFERS - OUT	-	-	-
TRANSFER TO RESERVES	-	-	-
TOTAL USES	\$ 90,761,889	\$ 90,866,186	\$ 104,297

FISCAL YEAR: 2022-23

DISTRICT: GATEWAY

10/20/22

FUND: SPECIAL REVENUE - OPERATIONAL FUND

<u>RESOURCES</u>	ORIGINAL BUDGET ADOPTED 06/16/22	MODIFIED BUDGET ADOPTED 10/20/22	CHANGE
DESIGNATED FUND BALANCE			
REVENUES			
TAX LEVY	\$ 2,000,000	\$ 2,000,000	\$ -
STATE AID	1,967,293	1,967,293	-
PROGRAM FEES	-	-	-
MATERIAL FEES	-	-	-
OTHER STUDENT FEES	-	-	-
FEDERAL REVENUE	7,058,033	7,058,033	-
INSTITUTIONAL	82,500	82,500	-
TOTAL REVENUE	11,107,826	11,107,826	-
OTHER FUNDING SOURCES			
PROCEEDS FROM DEBT			
OPERATING TRANSFERS - IN	-	-	-
TRANSFER FROM RESERVES	-	-	-
TOTAL RESOURCES	\$ 11,107,826	\$ 11,107,826	\$ -
 <u>USES</u>			
INSTRUCTION	\$ 6,055,169	\$ 6,055,169	\$ -
INSTR. RESOURCES	-	-	-
STUDENT SERVICES	2,061,106	2,061,106	-
GENERAL INSTITUTIONAL	476,051	476,051	-
PHYSICAL PLANT	-	-	-
AUXILIARY SERVICES	-	-	-
PUBLIC SERVICES	390,500	390,500	-
TOTAL EXPENDITURES	8,982,826	8,982,826	-
OTHER USES			
OPERATING TRANSFERS - OUT	2,125,000	2,125,000	-
TRANSFER TO RESERVES	-	-	-
TOTAL USES	\$ 11,107,826	\$ 11,107,826	\$ -

FISCAL YEAR: 2022-23

DISTRICT: GATEWAY
10/20/22

FUND: SPECIAL REVENUE - NON AIDABLE

<u>RESOURCES</u>	ORIGINAL BUDGET ADOPTED 06/16/22	MODIFIED BUDGET ADOPTED 10/20/22	CHANGE
DESIGNATED FUND BALANCE			
REVENUES			
TAX LEVY	\$ -	\$ -	\$ -
STATE AID	1,879,000	1,879,000	-
PROGRAM FEES	-	-	-
MATERIAL FEES	-	-	-
OTHER STUDENT FEES	812,000	812,000	-
INSTITUTIONAL	2,403,000	2,403,000	-
FEDERAL REVENUE	19,540,000	19,540,000	-
TOTAL REVENUE	24,634,000	24,634,000	-
OTHER FUNDING SOURCES			
PROCEEDS FROM DEBT			
OPERATING TRANSFERS - IN	-	-	-
TRANSFER FROM RESERVES	-	-	-
TOTAL RESOURCES	\$ 24,634,000	\$ 24,634,000	\$ -
 <u>USES</u>			
INSTRUCTION	\$ -	\$ -	\$ -
INSTR. RESOURCES	-	-	-
STUDENT SERVICES	24,623,500	24,623,500	-
GENERAL INSTITUTIONAL	10,500	10,500	-
PHYSICAL PLANT	-	-	-
AUXILIARY SERVICES	-	-	-
PUBLIC SERVICES	-	-	-
TOTAL EXPENDITURES	24,634,000	24,634,000	-
OTHER USES			
OPERATING TRANSFERS - OUT		-	-
TRANSFER TO RESERVES	-	-	-
TOTAL USES	\$ 24,634,000	\$ 24,634,000	\$ -

FISCAL YEAR: 2022-23

DISTRICT: GATEWAY

10/20/22

FUND: CAPITAL PROJECTS

<u>RESOURCES</u>	ORIGINAL BUDGET ADOPTED 06/16/22	MODIFIED BUDGET ADOPTED 10/20/22	CHANGE
DESIGNATED FUND BALANCE			
REVENUES			
TAX LEVY-(TIF Refund)	\$ -	\$ -	\$ -
STATE AID	200,000	200,000	-
PROGRAM FEES	-	-	-
MATERIAL FEES	-	-	-
OTHER STUDENT FEES	-	-	-
FEDERAL REVENUE	-	-	-
INSTITUTIONAL	150,000	150,000	-
TOTAL REVENUE	350,000	350,000	-
OTHER FUNDING SOURCES			
PROCEEDS FROM DEBT	13,000,000	13,000,000	-
OPERATING TRANSFERS - IN	-	-	-
TRANSFER FROM RESERVES	-	-	-
TOTAL RESOURCES	\$ 13,350,000	\$ 13,350,000	\$ -
 <u>USES</u>			
INSTRUCTION	\$ 2,645,000	\$ 2,645,000	\$ -
INSTR. RESOURCES	15,000	15,000	-
STUDENT SERVICES	10,000	10,000	-
GENERAL INSTITUTIONAL	2,455,000	2,455,000	-
PHYSICAL PLANT	8,200,000	8,200,000	-
AUXILIARY SERVICES	-	-	-
PUBLIC SERVICES	25,000	25,000	-
TOTAL EXPENDITURES	13,350,000	13,350,000	-
OTHER USES			
OPERATING TRANSFERS - OUT	-	-	-
TRANSFER TO RESERVES	-	-	-
TOTAL USES	\$ 13,350,000	\$ 13,350,000	\$ -

FISCAL YEAR: 2022-23

DISTRICT: GATEWAY

10/20/22

FUND: DEBT SERVICE

<u>RESOURCES</u>	ORIGINAL BUDGET ADOPTED 06/16/22	MODIFIED BUDGET ADOPTED 10/20/22	CHANGE
DESIGNATED FUND BALANCE			
REVENUES			
TAX LEVY	\$ 16,170,000	\$ 16,170,000	\$ -
STATE AID	-	-	-
OTHER STATE	-	-	-
PROGRAM FEES	-	-	-
MATERIAL FEES	-	-	-
OTHER STUDENT FEES	-	-	-
INSTITUTIONAL	5,000	5,000	-
FEDERAL REVENUE	-	-	\$ -
TOTAL REVENUE	16,175,000	16,175,000	-
OTHER FUNDING SOURCES			
PROCEEDS FROM DEBT	560,000	560,000	-
OPERATING TRANSFERS - IN	-	-	-
TRANSFER FROM RESERVES	53,446	53,446	-
TOTAL RESOURCES	\$ 16,788,446	\$ 16,788,446	\$ -
 <u>USES</u>			
INSTRUCTION	\$ -	\$ -	\$ -
INSTR. RESOURCES	-	-	-
STUDENT SERVICES	-	-	-
GENERAL INSTITUTIONAL	-	-	-
PHYSICAL PLANT	16,788,446	16,788,446	-
AUXILIARY SERVICES	-	-	-
PUBLIC SERVICES	-	-	-
TOTAL EXPENDITURES	16,788,446	16,788,446	-
OTHER USES			
OPERATING TRANSFERS - OUT	-	-	-
TRANSFER TO RESERVES	-	-	-
TOTAL USES	\$ 16,788,446	\$ 16,788,446	\$ -

FISCAL YEAR: 2022-23

DISTRICT: GATEWAY

10/20/22

FUND: ENTERPRISE FUND

<u>RESOURCES</u>	ORIGINAL BUDGET ADOPTED 06/16/22	MODIFIED BUDGET ADOPTED 10/20/22	CHANGE
DESIGNATED FUND BALANCE			
REVENUES			
TAX LEVY	\$ 45,000	\$ 45,000	\$ -
STATE AID	-	-	-
PROGRAM FEES	-	-	-
MATERIAL FEES	-	-	-
OTHER STUDENT FEES	181,000	181,000	-
INSTITUTIONAL	399,000	399,000	-
FEDERAL REVENUE	-	-	-
TOTAL REVENUE	625,000	625,000	-
OTHER FUNDING SOURCES			
PROCEEDS FROM DEBT	-	-	-
OPERATING TRANSFERS - IN	-	-	-
TRANSFER FROM RESERVES	-	-	-
TOTAL RESOURCES	\$ 625,000	\$ 625,000	\$ -
<u>USES</u>			
INSTRUCTION	\$ -	\$ -	\$ -
INSTR. RESOURCES	-	-	-
STUDENT SERVICES	-	-	-
GENERAL INSTITUTIONAL	-	-	-
PHYSICAL PLANT	-	-	-
AUXILIARY SERVICES	625,000	625,000	-
PUBLIC SERVICES	-	-	-
TOTAL EXPENDITURES	625,000	625,000	-
OTHER USES			
OPERATING TRANSFERS - OUT	-	-	-
TRANSFER TO RESERVES	-	-	-
TOTAL USES	\$ 625,000	\$ 625,000	\$ -

GATEWAY TECHNICAL COLLEGE DISTRICT BOARD

Roll Call	_____
Action	_____X_____
Information	_____
Discussion	_____

RESOLUTION NO. M-2022 A

Designation of Assistant, Associate, and Deputy Directors

Summary of Item: Wisconsin’s Code of Ethics for Public Officials and Employees applies to a member of a technical college district board or district director of a technical college, or any position designated as assistant, associate, or deputy district director of a technical college – Wis. Statutes, Sec. 19.42(13)(f).

Attachments: Resolution M-2022 A - Resolution designating positions and current occupants of these positions.

Staff Liaison: Jacqueline Morris

Top896.docx 10/01/2022

GATEWAY TECHNICAL COLLEGE

RESOLUTION M-2022 A

RESOLVED that for purposes of Wisconsin's Code of Ethics for Public Officials and Employees, §19.41 through §19.59, Stats., the Gateway Technical College District Board designated the following positions deputy, associate, or assistant district directors and indicated its understanding that the current occupants of those position and their successors to those position are state public officials to whom Wisconsin's Ethics Code applies:

<u>POSITION</u>	<u>CURRENT OCCUPANT</u>
President & Chief Executive Officer	Bryan D. Albrecht
Provost	John R. Thibodeau
Vice President Learning Innovation & Chief Information Officer	Jeffrey D. Robshaw
Vice President Community & Government Relations	Stephanie L. Sklba
Vice President Business & Workforce Solutions	Matthew E. Janisin
Vice President Student Services & Enrollment Management	Stacy M. Riley
Vice President Human Resources	Jacqueline D. Morris
Chief Financial Officer / Vice President Finance and Administration	Sharon E. Johnson
Vice President Diversity, Equity and Inclusion	Tammi M. Summers

BY _____
Rebecca Matoska-Mentink, Chairperson

DATE October 20, 2022

BY _____
Zaida Hernandez-Irisson, Secretary

DATE October 22, 2022

GATEWAY TECHNICAL COLLEGE DISTRICT BOARD

Roll Call
Action X
Information
Discussion

SUMMARY OF REVENUE AND EXPENDITURES

Summary of Item: Summary of revenue and expenditures as of **9/30/22**

Ends Statements and/or Executive Limitations
Section 3 - Executive Limitations
Policy 3.5 Financial Condition

Staff Liaison: Sharon Johnson

GATEWAY TECHNICAL COLLEGE
2022-23 SUMMARY OF REVENUE & EXPENDITURES AS OF 9/30/22

<u>COMBINED FUNDS</u>	2022-23 APPROVED BUDGET	2022-23 WORKING BUDGET	2022-23 ACTUAL TO DATE	PERCENT INCURRED
REVENUE:				
LOCAL GOVERNMENT	\$ 38,631,663	\$ 38,631,663	\$ 544	0.00%
STATE AIDS	47,809,590	47,809,590	3,213,225	6.72%
STATUTORY PROGRAM FEES	14,306,572	14,306,572	8,252,541	57.68%
MATERIAL FEES	727,750	727,750	449,943	61.83%
OTHER STUDENT FEES	2,596,961	2,596,961	1,273,807	49.05%
INSTITUTIONAL	9,828,146	9,828,146	1,094,374	11.14%
FEDERAL	26,628,033	26,628,033	3,224,236	12.11%
OTHER RESOURCES	<u>15,685,000</u>	<u>15,685,000</u>	<u>5,759,346</u>	36.72%
TOTAL REVENUE & OTHER RESOURCES	<u>\$ 156,213,715</u>	<u>\$ 156,213,715</u>	<u>\$ 23,268,016</u>	14.89%
EXPENDITURES BY FUNCTION:				
INSTRUCTIONAL	\$ 69,174,277	\$ 69,174,277	\$ 14,601,351	21.11%
INSTRUCTIONAL RESOURCES	1,177,935	1,177,935	303,108	25.73%
STUDENT SERVICES	39,267,106	39,267,106	6,793,080	17.30%
GENERAL INSTITUTIONAL	11,943,586	11,946,086	3,612,885	30.24%
PHYSICAL PLANT	32,538,757	32,536,257	5,086,364	15.63%
AUXILIARY SERVICES	625,000	625,000	128,243	20.52%
PUBLIC SERVICES	<u>415,500</u>	<u>415,500</u>	<u>91,521</u>	22.03%
TOTAL EXPENDITURES	<u>\$ 155,142,161</u>	<u>\$ 155,142,161</u>	<u>\$ 30,616,553</u>	19.73%
EXPENDITURES BY FUNDS:				
GENERAL	\$ 90,761,889	\$ 90,761,889	\$ 20,871,472	23.00%
SPECIAL REVENUE - OPERATIONAL	8,982,826	8,982,826	1,570,661	17.49%
SPECIAL REVENUE - NON AIDABLE	24,634,000	24,634,000	3,503,052	14.22%
CAPITAL PROJECTS	13,350,000	13,350,000	4,231,012	31.69%
DEBT SERVICE	16,788,446	16,788,446	312,113	1.86%
ENTERPRISE	<u>625,000</u>	<u>625,000</u>	<u>128,243</u>	20.52%
TOTAL EXPENDITURES	<u>\$ 155,142,161</u>	<u>\$ 155,142,161</u>	<u>\$ 30,616,553</u>	19.73%

**GATEWAY TECHNICAL COLLEGE
2022-23 SUMMARY OF REVENUE & EXPENDITURES AS OF 9/30/22**

<u>GENERAL FUND</u>	2022-23 APPROVED BUDGET	2022-23 WORKING BUDGET	2022-23 ACTUAL TO DATE	PERCENT INCURRED
REVENUE:				
LOCAL GOVERNMENT	\$ 20,416,663	\$ 20,416,663	\$ 544	0.00%
STATE AIDS	43,763,297	43,763,297	3,141,525	7.18%
STATUTORY PROGRAM FEES	14,306,572	14,306,572	8,252,541	57.68%
MATERIAL FEES	727,750	727,750	449,943	61.83%
OTHER STUDENT FEES	1,603,961	1,603,961	753,622	46.99%
FEDERAL REVENUE	30,000	30,000	90	0.30%
INSTITUTIONAL	6,788,646	6,788,646	334,517	4.93%
OTHER RESOURCES	<u>2,125,000</u>	<u>2,125,000</u>	<u>-</u>	0.00%
TOTAL REVENUE & OTHER RESOURCES	<u>\$ 89,761,889</u>	<u>\$ 89,761,889</u>	<u>\$ 12,932,781</u>	14.41%
 EXPENDITURES BY FUNCTION:				
INSTRUCTIONAL	\$ 60,474,108	\$ 60,474,108	\$ 13,455,382	22.25%
INSTRUCTIONAL RESOURCES	1,162,935	1,162,935	303,108	26.06%
STUDENT SERVICES	12,572,500	12,572,500	2,769,600	22.03%
GENERAL INSTITUTIONAL	9,002,035	9,004,535	2,725,100	30.26%
PHYSICAL PLANT	<u>7,550,311</u>	<u>7,547,811</u>	<u>1,618,283</u>	21.44%
TOTAL EXPENDITURES	<u>\$ 90,761,889</u>	<u>\$ 90,761,889</u>	<u>\$ 20,871,472</u>	23.00%

**GATEWAY TECHNICAL COLLEGE
2022-23 SUMMARY OF REVENUE & EXPENDITURES AS OF 9/30/22**

<u>SPECIAL REVENUE-OPERATIONAL FUND</u>	2022-23 APPROVED BUDGET	2022-23 WORKING BUDGET	2022-23 ACTUAL TO DATE	PERCENT INCURRED
REVENUE:				
LOCAL GOVERNMENT	\$ 2,000,000	\$ 2,000,000	\$ -	0.00%
STATE AIDS	1,967,293	1,967,293	71,700	3.64%
FEDERAL	7,058,033	7,058,033	230,433	3.26%
INSTITUTIONAL	<u>82,500</u>	<u>82,500</u>	<u>13,712</u>	16.62%
TOTAL REVENUE & OTHER RESOURCES	<u>\$ 11,107,826</u>	<u>\$ 11,107,826</u>	<u>\$ 315,844</u>	2.84%
EXPENDITURES BY FUNCTION:				
INSTRUCTIONAL	\$ 6,055,169	\$ 6,055,169	\$ 784,111	12.95%
STUDENT SERVICES	2,061,106	2,061,106	522,929	25.37%
GENERAL INSTITUTIONAL	476,051	476,051	169,720	35.65%
PHYSICAL PLANT	-	-	2,381	0.00%
PUBLIC SERVICE	<u>390,500</u>	<u>390,500</u>	<u>91,521</u>	23.44%
TOTAL EXPENDITURES	<u>\$ 8,982,826</u>	<u>\$ 8,982,826</u>	<u>\$ 1,570,661</u>	17.49%

**GATEWAY TECHNICAL COLLEGE
2022-23 SUMMARY OF REVENUE & EXPENDITURES AS OF 9/30/22**

<u>SPECIAL REVENUE-NON AIDABLE FUND</u>	2022-23 APPROVED BUDGET	2022-23 WORKING BUDGET	2022-23 ACTUAL TO DATE	PERCENT INCURRED
REVENUE:				
STATE AIDS	\$ 1,879,000	\$ 1,879,000	\$ -	0.00%
OTHER STUDENT FEES	812,000	812,000	502,221	61.85%
INSTITUTIONAL	2,403,000	2,403,000	644,607	26.83%
FEDERAL	<u>19,540,000</u>	<u>19,540,000</u>	<u>2,993,713</u>	15.32%
TOTAL REVENUE & OTHER RESOURCES	<u>\$ 24,634,000</u>	<u>\$ 24,634,000</u>	<u>\$ 4,140,541</u>	16.81%
 EXPENDITURES BY FUNCTION:				
STUDENT SERVICES	\$ 24,623,500	\$ 24,623,500	\$ 3,500,552	14.22%
GENERAL INSTITUTIONAL	<u>10,500</u>	<u>10,500</u>	<u>2,500</u>	23.81%
TOTAL EXPENDITURES	<u>\$ 24,634,000</u>	<u>\$ 24,634,000</u>	<u>\$ 3,503,052</u>	14.22%

**GATEWAY TECHNICAL COLLEGE
2022-23 SUMMARY OF REVENUE & EXPENDITURES AS OF 9/30/22**

<u>CAPITAL PROJECTS FUND</u>	2022-23 APPROVED BUDGET	2022-23 WORKING BUDGET	2022-23 ACTUAL TO DATE	PERCENT INCURRED
REVENUE:				
STATE AIDS	\$ 200,000	\$ 200,000	\$ -	0.00%
INSTITUTIONAL	150,000	150,000	30,686	20.46%
OTHER RESOURCES	<u>13,000,000</u>	<u>13,000,000</u>	<u>5,500,000</u>	42.31%
TOTAL REVENUE & OTHER RESOURCES	<u>\$ 13,350,000</u>	<u>\$ 13,350,000</u>	<u>\$ 5,530,686</u>	41.43%
EXPENDITURES BY FUNCTION:				
INSTRUCTIONAL	\$ 2,645,000	\$ 2,645,000	\$ 361,857	13.68%
INSTRUCTIONAL - RESOURCES	15,000	15,000	-	0.00%
STUDENT SERVICES	10,000	10,000	-	0.00%
GENERAL INSTITUTIONAL	2,455,000	2,455,000	715,566	29.15%
PHYSICAL PLANT	8,200,000	8,200,000	3,153,588	38.46%
PUBLIC SERVICE	<u>25,000</u>	<u>25,000</u>	<u>-</u>	0.00%
TOTAL EXPENDITURES	<u>\$ 13,350,000</u>	<u>\$ 13,350,000</u>	<u>\$ 4,231,012</u>	31.69%

**GATEWAY TECHNICAL COLLEGE
2022-23 SUMMARY OF REVENUE & EXPENDITURES AS OF 9/30/22**

<u>DEBT SERVICE FUND</u>	2022-23 APPROVED BUDGET	2022-23 WORKING BUDGET	2022-23 ACTUAL TO DATE	PERCENT INCURRED
REVENUE:				
LOCAL GOVERNMENT	\$ 16,170,000	\$ 16,170,000	\$ -	0.00%
INSTITUTIONAL	5,000	5,000	-	0.00%
OTHER RESOURCES	<u>560,000</u>	<u>560,000</u>	<u>259,346</u>	46.31%
TOTAL REVENUE & OTHER RESOURCES	<u>\$ 16,735,000</u>	<u>\$ 16,735,000</u>	<u>\$ 259,346</u>	1.55%
 EXPENDITURES BY FUNCTION:				
PHYSICAL PLANT	<u>16,788,446</u>	<u>16,788,446</u>	<u>312,113</u>	1.86%
TOTAL EXPENDITURES	<u>\$ 16,788,446</u>	<u>\$ 16,788,446</u>	<u>\$ 312,113</u>	1.86%

GATEWAY TECHNICAL COLLEGE
2022-23 SUMMARY OF REVENUE & EXPENDITURES AS OF 9/30/22

<u>ENTERPRISE FUND</u>	2022-23 APPROVED BUDGET	2022-23 WORKING BUDGET	2022-23 ACTUAL TO DATE	PERCENT INCURRED
REVENUE:				
LOCAL GOVERNMENT	\$ 45,000	\$ 45,000	\$ -	0.00%
OTHER STUDENT FEES	181,000	181,000	17,964	9.92%
INSTITUTIONAL	<u>399,000</u>	<u>399,000</u>	<u>70,853</u>	17.76%
TOTAL REVENUE & OTHER RESOURCES	<u>\$ 625,000</u>	<u>\$ 625,000</u>	<u>\$ 88,817</u>	14.21%
EXPENDITURES BY FUNCTION:				
AUXILIARY SERVICES	<u>\$ 625,000</u>	<u>\$ 625,000</u>	<u>\$ 128,243</u>	20.52%
TOTAL EXPENDITURES	<u>\$ 625,000</u>	<u>\$ 625,000</u>	<u>\$ 128,243</u>	20.52%

GATEWAY TECHNICAL COLLEGE DISTRICT BOARD

Roll Call
Action X
Information
Discussion

CASH AND INVESTMENT SCHEDULES

Summary of Item: Monthly cash and investment schedules

Ends Statements and/or Executive Limitations:
Section 3 - Executive Limitations
Policy 3.5 Financial Condition

Staff Liaison: Sharon Johnson

GATEWAY TECHNICAL COLLEGE
MONTHLY CASH RECONCILIATION
FOR THE MONTH ENDING AUGUST 31, 2022

Cash Balance: July 31, 2022		\$ 35,408,446.33
 <u>PLUS:</u>		
Cash Receipts		17,225,183.69
		\$ 52,633,630.02
 <u>LESS:</u>		
Disbursement:		
Payroll	4,167,424.24	
Accounts Payable	<u>5,121,988.35</u>	<u>9,289,412.59</u>
 Cash Balance: August 31, 2022		 <u>\$ 43,344,217.43</u>

DISPOSITION OF FUNDS

Cash in Bank		1,545,876.52
Cash in Transit		84,546.91
Investments		41,708,569.00
Cash on Hand		<u>5,225.00</u>
 Cash Balance: August 31, 2022		 <u>\$ 43,344,217.43</u>

GATEWAY TECHNICAL COLLEGE
MONTHLY INVESTMENT REPORT

JULY 2022 - JUNE 2023

	Investments at Beginning of Month	Investments at End of Month	Change in Investments for Month	Investments Income for Month	YTD Investments Income	Average Monthly Rate of Investment Income
July-22	\$ 43,952,195	\$ 33,611,986	\$ (10,340,209)	\$ 19,254	\$ 19,254	0.73
AUGUST	33,611,986	41,708,569	\$ 8,096,583	30,142	\$ 30,142	0.89

SEPTEMBER

OCTOBER

NOVEMBER

DECEMBER

January-22

FEBRUARY

MARCH

APRIL

MAY

JUNE

INVESTMENT SCHEDULE

August 31, 2022

<u>NAME OF BANK/INST</u>	<u>DATE INVESTED</u>	<u>DATE OF MATURITY</u>	<u>AMOUNT</u>	<u>INTEREST RATE</u>	<u>PRESENT STATUS</u>
LOCAL GOV'T POOL	Various	Open	\$ 9,771,036	2.15	OPEN
JOHNSON BANK	Various	Open	31,937,533	0.50	OPEN
		TOTAL	<u>\$ 41,708,569</u>		

GATEWAY TECHNICAL COLLEGE DISTRICT BOARD

Roll Call	_____
Action	_____ X _____
Information	_____
Discussion	_____

PERSONNEL REPORT

Summary of Item: Monthly Personnel Activity Report

- Employment Approvals: New Hire(s)
- Promotion(s)
- Transfer(s)
- Retirement(s)
- Separation(s)

Ends Statements and/or Executive Limitations:

Section 3: Executive Limitations

Policy 3.3 – Employment, Compensation & Benefits

Staff Liaison: Jacqueline Morris

Personnel Report

October 2022

Employment Approvals: New Hires

Brice Darras

Instructor, Social Sciences; School of Liberal Arts & Sciences; Elkhorn; Annual Salary: \$73,000.00 Effective: August 30, 2022

Scott Nelson

Program Producer/Development Specialist; Community & Government Relations; Kenosha; Annual Salary: \$55,000.00 Effective: September 12, 2022

Petra Vollendorf

Scheduling Specialist; Academic Operations Division; Kenosha; Annual Salary: \$54,080.00 Effective: September 27, 2022

Promotion(s)

Ericka Bernhardt

Agent, Purchasing; Business Office; Kenosha; Annual Salary: \$61,712.00 Effective: September 19, 2022

Michelle Miller

Administrative Assistance, VP of BWS; BWS; iMET; Annual Salary: \$61,152.00 Effective: September 12, 2022

Transfer(s)

Katie Dembowski

Director, Account Management; BWS; iMET; Effective: September 12, 2022

Maria Gabriela Iribarren Turmero

Talent Acquisition Specialist; Human Resources; Kenosha; Annual Salary: \$58,773.00 Effective: September 12, 2022

Retirement(s)

Zina Haywood

Executive VP/Provost; Kenosha; Effective: September 6, 2022

Michael Troudt

Instructor, ELL; Racine; Effective: September 9, 2022

Separation(s)

Angela Peters

Instructor, Nursing; Burlington; Effective: September 2, 2022

Christine Sanchez

Welcome Center Associate; Kenosha; Effective: September 21, 2022

OCTOBER 2022 GRANT AWARDS

GATEWAY TECHNICAL COLLEGE DISTRICT BOARD

Roll Call _____
Action _____X
Information _____
Discussion _____

GRANT AWARDS

Summary of Item: The college has received 2 new grant awards.

Attachments: Grant Awards – October 2022

College Strategic Directions
and/or Executive Limitations: Wisconsin Statutes 38.14(4)
Section 3 - Executive Limitations
Policy 3.5 - Financial Condition
College Strategic Direction #1

Staff Liaison: Anne Whynott

OCTOBER 2022 GRANT AWARDS

Project Number	Title	Purpose	Grant Period	Number Served	Funding Source	Total Budget	Grant Award	Matching Funds
091	Program to Program Articulate	Gateway will partner with UW-Parkside, UW-Whitewater, UW-Milwaukee, and Marquette University to develop new courses and new articulation agreements in the areas of supply chain management and liberal arts transfer. The focuses for liberal arts transfer will be expanding humanities courses for the AA and AS degrees and developing a pre-engineering pathway for the AS degree.	7/1/2022 – 6/30/2023	N/A	Wisconsin Technical College System	\$100,000	\$100,000	\$0
097	Re-Enroll to Succeed	Through this grant Gateway Technical College aims to identify and re-enroll stopped out students, learn about the factors and barriers that influence a student to stop out and what gets them to re-enroll, and provide holistic, comprehensive support to students who re-enroll.	7/1/2022 – 6/30/2023	70	Wisconsin Technical College System	\$200,000	\$200,000	\$0

GATEWAY TECHNICAL COLLEGE DISTRICT BOARD

Roll Call	_____
Action	<u> X </u>
Information	_____
Discussion	_____

CONTRACTS FOR INSTRUCTIONAL DELIVERY

Summary of Items: **1. 38.14 Contract reports for October 2022**
lists all contracts for service completed or
in progress 2022/2023 fiscal year.

Ends Statements and/or Executive Limitations:
Policy 4.4 College Strategic Directions/Ends Statements #1 and #3

Staff Liaison: Matt Janisin

BWS CFS Board Report FY23



"Estimated Revenue" YTD: \$809,871.27

Contract #	Sponsor Name	Course Numbers	Grant Type / No.	CFS Date / Date Req.	Estimated CFS Revenue
1	0001 Kunes Auto Group	103-833-1ZBM, 103-833-1ZBT, 103-840-1ZBM, 103-840-1ZBT, 103-839-1ZBM, 103-844-1ZBM, 103-841-1ZBM, 103-839-1ZBT, 103-844-1ZBT, 103-841-1ZBT		03/10/22	\$9,264.00
2	0002 Southeastern WI Workforce Development Board	444-337-1CBR, 444-316-1CBR		03/10/22	\$30,365.55
3	0003 Racine Youthful Offenders Correctional Facility (RYOCF)	620-310-1ZBY, 612-102-1ZBY, 628-310-1ZBY, 664-110-1ZBY, 620-303-1ZBY, 620-311-1ZBY, 628-411-1ZBY		04/12/22	\$57,205.00
4	0004 Racine Youthful Offenders Correctional Facility (RYOCF)	804-370-1ZBY, 801-301-1ZBY		04/12/22	\$12,345.00
5	0005 KABA	196-848-1ZBA, 96-848-1ZBK		04/13/22	\$2,832.00
6	0006 KABA	196-849-2ZBA, 196-849-2ZBK, 196-850-2ZBA, 196-850-2ZBK		04/13/22	\$2,832.00
7	0007 Industries for the Blind and Visually Impaired (IBVI)	103-840-1ZBA, 103-839-1ZBA, 103-844-1ZBA		04/28/22	\$1,888.00
8	0008 KABA	196-848-1ZBF, 196-849-1ZBF		05/02/22	\$2,832.00
9	0009 KABA	196-850-2ZBF		05/02/22	\$1,416.00
10	0010 RCWS Pioneer Products	444-339-1CBP, 420-447-1CBP, 444-316-1CBP, 444-331-1CBP, 804-413-1CBP		06/06/22	\$76,020.00
11	0011 Racine Correctional Institution (RCI)	444-331-1ZBR, 444-337-1ZBR, 444-316-1ZBR, 444-339-1ZBR, 804-370-1ZBR		05/04/22	\$59,908.00
12	0012 Kenall Manufacturing	605-467-1ZBK		05/18/22	\$3,900.37
13	0013 WE Energies	420-408-1CBA		05/18/22	\$20,035.50
14	0014 Robert E. Ellsworth Correctional Institution (RECC)	801-301-1CBG, 900-003-1M1BG		05/23/22	\$18,599.00
15	0015 Southeastern WI Workforce Development Board	444-339-1CBG, 444-337-1CBG, 444-331-1CBG, 444-316-1CBG, 804-370-1CBG, 103-804-1CBG, 449-403-1CBG		05/23/22	\$64,086.00
16	0016 Rehrig Pacific Company	612-409-1ZBA		06/01/22	\$1,993.18
17	0017 WRTP Big Step	607-104-1CMB		06/01/22	\$7,455.00
18	0018 Lab Midwest	625-440-1CBA		06/08/22	\$3,500.00
19	0019 Snap On	620-456-1ZBA	183	06/07/22	\$695.00
20	0020 Continental Plastic	900-019-1ZBC		06/20/22	\$6,140.00
21	0021 WCEDA	196-850-1ZBW		06/27/22	\$1,686.00
22	0022 Kenosha Correctional Center (KCC) – WI DOC	444-339-2CBK, 444-337-2CBK, 444-316-2CBK, 444-331-2CBK, 444-406-2CBK, 449-403-2CBK, 807-370-2CBK, 103-804-2CBK		07/13/22	\$26,784.00
23	0023 Deublin Company	420-434-1ZBA		07/13/22	\$3,503.00
24	0024 Racine Youthful Offenders Correctional Facility (RYOCF)	804-370-2ZBY, 801-301-2ZBY		07/18/22	\$11,895.00
25	0025 Racine Youthful Offenders Correctional Facility (RYOCF)	620-310-2ZBY, 612-102-2ZBY, 628-310-2ZBY, 664-110-2ZBY, 620-303-2ZBY, 620-311-2ZBY, 628-411-2ZBY		07/21/22	\$60,190.00
26	0026 Gateway Technical College Community and Government Relations	900-019-1CBG		07/22/22	\$590.00
27	0027 Great Northern Corporation	620-458-1ZBG		07/29/22	\$6,772.75
28	0028 Great Northern Corporation	612-409-2ZBG		07/29/22	\$1,986.25
29	0029 Styberg	444-448-1ZBS, 444-449-1ZBS, 444-450-1ZBS, 444-451-1ZBS, 444-452-1ZBS		08/15/22	\$5,846.25
30	0030 Graham Packaging	103-845-1CBG		08/05/22	\$1,544.00
31	0031 Kenall Manufacturing	620-492-1ZBK		08/10/22	\$780.75
32	0032 Graham Packaging	103-833-2CBG, 103-840-2CBG		08/05/22	\$3,088.00
33	0033 InSinkErator	804-370-2ZBA, 628-115-2CBA, 620-304-2CBA, 664-100-2CBA		08/18/22	\$54,096.40

	Contract #	Sponsor Name	Course Numbers	Grant Type / No.	CFS Date / Date Req.	Estimated CFS Revenue
34	0034	Styberg	444-448-1ZBE, 444-449-1ZBE, 444-450-1ZBE, 444-451-1ZBE, 444-452-1ZBE		08/16/22	\$5,846.25
35	0035	WRTP Big Step	607-104-2CMB		08/16/22	\$7,455.00
36	0036	Styberg	444-448-1ZBC, 444-449-1ZBC, 444-450-1ZBC, 444-451-1ZBC, 444-452-1ZBC		08/23/22	\$5,846.25
37	0037	Walworth County Jail	890-721-2ZBA, 859-777-2ZBA, 858-733-2ZBA, 854-733-2ZBA, 856-740-2ZBA, 859-798-2ZBA		08/31/22	\$6,375.00
38	0038	SC Johnson Wax	462-463-2CBA, 462-463-2CBB, 462-463-2CBC, 462-463-2CBD, 462-463-2CBE, 462-463-2CBF, 462-463-2CBG		09/02/22	\$6,176.00
39	0039	Andis Company	623-808-2ZBAW, 900-019-2ZBAW, 900-003-2M1AW	169	09/07/22	\$2,432.00
40	0040	KABA	196-848-2ZBK, 196-849-2ZBK, 196-850-2ZBK		09/08/22	\$4,248.00
41	0041	Kenall Manufacturing	605-467-2ZBK		09/09/22	\$3,903.47
42	0042	Adams Electric	620-494-2EBA, 620-495-2EBA		09/09/22	\$5,404.00
43	0043	WCEDA	196-848-2EBW		09/15/22	\$1,688.16
44	0044	RUSD -- Kobriger	https://docs.google.com/spreadsheets/d/12JAERuX0IA3BPPV2chPCgRJPnC-CDL94P/edit?usp=sharing&oid=116858003998347968939&rtopof=true&sd=true		09/15/22	\$159,556.00
45	0045	WCEDA	196-848-2EBR, 196-849-2EBR, 196-850-2EBR		09/16/22	\$4,634.82
46	0046	Conagra Brand	664-100-2ZBCA, 664-100-2ZBCB, 664-100-2ZBCC, 900-019-2ZBCG; 900-003-2M1CB	172	09/19/22	\$8,106.00
47	0047	Emerson	420-473-2ZBA, 420-473-2ZBB, 420-473-2ZBC, 420-473-2ZBD		09/19/22	\$6,199.18
48	0048	Plas-Tech Engineering, Inc.	420-434-2ZBP		09/22/22	\$2,479.50
49	0049	API Heat Transfer	420-434-2ZBA		09/22/22	\$2,376.00
50	0050	Kenall Mfg	620-492-2ZBK		09/22/22	\$789.64
51	0052	Rust-Oleum	620-303-2CBR, 620-303-2CBW; 900-003-2M1RW		09/28/22	\$10,422.00
52	0053	SC Johnson	462-463-2CB1, 462-463-2CB2, 462-463-2CB3, 462-463-2CB4, 462-463-2CB5		10/04/22	\$3,860.00

GATEWAY TECHNICAL COLLEGE DISTRICT BOARD

Roll Call	_____
Action	_____X_____
Information	_____
Discussion	_____

CONTRACTS FOR INSTRUCTIONAL DELIVERY

Summary of Items: **WI Statutes 38.14**
 Contract Reports for October 2022
 Lists all Protective Services contracts for service completed
 or in progress ending FY2022-23.

Ends Policy 4.1: Statement #2

Staff Liaison: Terry Simmons

Protective Services CFS Board Report FY23

Estimated Revenue YTD: \$172,366.10

	Contract #	Sponsor Name	Course Numbers	Grant Type / No.	CFS Date / Date Req.	Estimated CFS Revenue
1	2000	Ellsworth Correctional Center	SU22 Prison Courses		04/26/22	\$7,500.00
2	2001	RYOCF	SU22 Prison Courses		05/02/22	\$6,500.00
3	2002	WI DOJ-LESB	504-511-1K1A		12/14/21	\$9,358.44
4	2003	WI DOJ-LESB	504-511-1K1C		12/14/21	\$10,695.36
5	2004	Continental Plastic	531-892-1z1a		05/25/22	\$466.50
6	2005	Kenosha Fire Dept	504-410-1K1A		05/16/22	\$600.00
7	2006	Whitewater Police Dept	504-481-1H1A		05/24/22	\$100.00
8	2007	Town of Delavan Police Dept	504-481-1H1B		05/24/22	\$50.00
9	2008	UW-Parkside Police Dept	504-481-1H1C		05/24/22	\$50.00
10	2009	Sturtevant Police Dept	504-481-1H1D		05/24/22	\$50.00
11	2010	St Pauls Lutheran Church and School	531-427-1z1a		06/16/22	\$270.80
12	2011	Kenosha Police Dept	504-481-1H1E		06/13/22	\$250.00
13	2013	Racine Police Department	504-479-1K1A		06/02/22	\$750.00
14	2014	Kenosha Police Department	504-479-1K1B		06/02/22	\$500.00
15	2015	Beaver Dam Police Dept	504-479-1K1C		06/02/22	\$250.00
16	2016	Caledonia Police Dept	504-479-1K1D		06/02/22	\$250.00
17	2017	Kenosha Sheriff's Dept	504-479-1K1E		06/02/22	\$250.00
18	2018	UW-Whitewater Police Dept	504-479-1K1F		06/02/22	\$250.00
19	2019	Walworth Police Dept	504-479-1K1G		06/02/22	\$250.00
20	2020	Williams Bay Police Dept	504-479-1K1H		06/02/22	\$250.00
21	2021	Kenosha Sheriff's Dept	504-469-1K1A		06/02/22	\$200.00
22	2022	Kenosha Police Dept	504-469-1K1B		06/02/22	\$100.00
23	2023	Walworth Sheriff's Office	504-474-1H1C, 504-474-1H1E, 504-474-1H1G		06/06/22	\$1,075.00
24	2024	Town of Geneva Police Dept	504-474-1H1D		06/06/22	\$75.00
25	2025	Genoa City Police Dept	504-474-1H1M, 504-474-1H1F, 504-474-1H1H		06/06/22	\$175.00
26	2026	Walworth Sheriff's Office	504-475-1H1A, 504-475-1H1B, 504-475-1H1C		06/07/22	\$1,050.00
27	2027	Town of Geneva Police Dept	504-475-1H1D, 504-475-1H1E		06/07/22	\$150.00
28	2028	Genoa City Police Dept	504-475-1H1F		06/07/22	\$50.00
29	2029	Town of Delavan Police Dept	504-475-1H1G		06/07/22	\$150.00
30	2030	Oak Creek Police Dept	504-401-1H1A		06/09/22	\$350.00
31	2031	Caledonia Police Dept	504-401-1H1B		06/09/22	\$175.00
32	2032	Mequon Police Dept	504-401-1H1C		06/09/22	\$175.00
33	2033	Oconto Falls Police Dept	504-401-1H1D		06/09/22	\$175.00
34	2035	WI-DOJ LESB	504-503-1K1B, 504-506-1K1B, 504-500-1K1B, 504-510-1K1B, 504-501-1K1B		06/09/22	\$25,000.00
35	2036	WI-DOJ LESB	504-504-2K1B, 504-509-2K1B, 504-508-2K1B, 504-502-2K1B, 504-507-2K1B, 504-505-2K1B, 504-511-2K1B		06/09/22	\$25,000.00
36	2037	WI-DOJ LESB	504-503-1K1D, 504-506-1K1D, 504-500-1K1D, 504-510-1K1D, 504-501-1K1D,		06/09/22	\$25,000.00
37	2038	WI-DOJ LESB	504-504-2K1D, 504-509-2K1D, 504-508-2K1D, 504-502-2K1D, 504-507-2K1D, 504-505-2K1D, 504-511-2K1D		06/09/22	\$25,000.00

Contract #	Sponsor Name	Course Numbers	Grant Type / No.	CFS Date / Date Req.	Estimated CFS Revenue	
38	2041	Burlington Police Dept	504-459-1H1A		07/27/22	\$225.00
39	2042	Kenosha Police Dept	504-459-1H1B		07/27/22	\$225.00
40	2043	Racine County Sheriff's Office	504-459-1H1C		07/27/22	\$225.00
41	2051	Ellsworth Correctional Center	FA22 Prison Courses		08/03/22	\$10,800.00
42	2054	WI-DOJ LESB	504-458-2Z1A		08/22/22	\$15,600.00
43	2055	WI-DOJ LESB	504-490-2K1A		08/22/22	\$1,500.00
44	2056	Kenosha Police Dept	504-427-2K1A		09/07/22	\$375.00
45	2057	New Berlin Police Dept	504-427-2K1B		09/07/22	\$250.00
46	2058	Milwaukee Police Dept (1)	504-427-2K1C		09/07/22	\$125.00
47	2062	Kenosha Police Dept	504-480-2K1A		10/06/22	\$200.00
48	2063	Caledonia Police Dept	504-480-2K1B		10/06/22	\$100.00
49	2064	Racine County Sheriff's Office	504-480-2K1C		10/06/22	\$100.00
50	2065	Walworth County Sheriff's Office	504-480-2K1D		10/06/22	\$100.00

GATEWAY TECHNICAL COLLEGE DISTRICT BOARD

Roll Call	_____
Action	<u> X </u>
Information	_____
Discussion	_____

CONTRACTS FOR INSTRUCTIONAL DELIVERY

Summary of Items: **WI Statutes 38.14**
 Contract Reports for October 2022
 Lists all High School contracts for service completed or in
 progress during FY2023-2024.

Ends Policy 4.1: Statement #5

Staff Liaison: Stacy Riley

Revenue Generating Contract Estimate (69 Contracts):		\$706,900.00								
Transcripted Credit Contract Estimate (41 Contracts):		\$1,496,100.00								
Total High School Contract Estimate (110 Contracts):		\$2,203,000.00								
Contract #	2023-	REAL School RUSD	Section	Term	Contract Estimate	Invoiced Amount	Multi-Recipient Contract Participating Schools	Course Type	Academy/Grant	Notes
1001		RUSD	543-200-1RMD, 543-200-1RME, 543-200-1RMB, 543-200-1RMZ, 543-200-1RM2	2022SU	\$11,000.00	\$11,394.08		HS		
1002		REAL School RUSD	900-003-1CH1, 900-003-1CH2, 900-003-1CH3, 900-003-1CH4	2022SU	\$1,200.00			HS		
1003		KUSD	543-200-1KMJ, 543-200-1KMK	2022SU	\$4,000.00	\$4,691.68		HS		
1004		Brookfield East High School	543-200-1ZMD, 543-200-1ZME	2022SU	\$4,600.00	\$6,532.16		HS		
1005		Waterford Union High School	543-200-1ZMF	2022SU	\$2,500.00	\$2,345.84		HS		
1006		Multi-Recipient	543-200-1ZMC	2022SU	\$3,000.00	\$3,016.08	Elkhorn, Union Grove	HS		
1007		Shoreland Lutheran High School	543-200-1KMH, 543-200-1KMG, 543-200-1KML	2022SU	\$1,300.00	\$1,675.60		HS		
1008		Muskego High School	543-200-1ZMA	2022SU	\$2,300.00	\$2,345.84		HS		
1009		Mukwonago High School	543-200-1EMC, 543-200-1EMB, 543-200-1EMA	2022SU	\$6,400.00	\$9,383.36		HS		
1010		Multi-Recipient	442-321-2E1A, 442-322-2E1A, 442-324-2E1A, 442-321-2E1B, 442-322-2E1B, 442-324-2E1B	2022FA	\$38,000.00		Burlington, East Troy, Elkhorn, CCA, Delavan, Westosha	HS	Welding	
1011		Multi-Recipient	442-321-2R1A, 442-322-2R1A, 442-324-2R1A, 442-321-2R1B, 442-322-2R1B, 442-324-2R1B	2022FA	\$16,000.00		Tremper, Lakeview, Bradford, Racine Luth, St. Cats, Union Grove, Reuther, Westosha, Horlick, Kenosha eSchool	HS	Welding	
1012		Multi-Recipient	442-323-3E1A, 457-309-3E1A, 442-334-3E1A, 442-323-3E1B, 457-309-3E1B, 442-334-3E1B	2023SP	\$34,000.00		Burlington, East Troy, Elkhorn, CCA, Delavan, Westosha	HS	Welding	
1013		Multi-Recipient	442-323-3R1A, 457-309-3R1A, 442-334-3R1A, 442-323-3R1B, 457-309-3R1B, 442-334-3R1B	2023SP	\$14,000.00		Tremper, Lakeview, Bradford, Racine Luth, St. Cats, Union Grove, Reuther, Westosha, Horlick, Kenosha eSchool	HS	Welding	
1014		Multi-Recipient	664-100-2C1B, 664-110-2C1B	2022FA	\$3,500.00		St. Cats, Shoreland Luth, Wilmot	HS	Smart Manf	
1015		Multi-Recipient	664-105-3C1A, 664-120-3C1A	2023SP	\$3,500.00		St. Cats, Shoreland Luth, Wilmot	HS	Smart Manf	
1016		REAL School RUSD	(NO HOURLY RATE LISTED) 421-316-2C1A, 421-316-2C1B, 444-331-2C1A, 444-331-2C1B, 444-335-2C1A, 444-335-2C1B, 444-337-2C1A, 444-337-2C1B, 605-121-2C1A, 605-130-2C1A, 605-130-2C1B, 605-130-2C1C, 605-130-2C1D, 664-103-2C1A, 664-103-2C1B, 664-103-2C1C, 664-103-2C1D, 664-105-2C1A, 664-105-2C1B, 664-120-2C1A, 664-120-2C1B, 664-120-2C1C, 664-120-2C1D, 900-003-2CH7	2022FA	\$75,000.00			HS		
1017		Multi-Recipient	444-331-2E1A, 444-337-2E1A	2022FA	\$2,500.00		Elkhorn, Waterford	HS	CNC	
1018		Multi-Recipient	444-339-3E1A, 444-316-3E1A	2023SP	\$10,000.00		Elkhorn, Waterford	HS	CNC	
1019		Multi-Recipient	504-900-2E1A, 504-903-2E1A	2022FA	\$12,000.00		Badger, Elkhorn, Waterford, Elkhorn Options	HS	Criminal Justice	
1020		Multi-Recipient	504-900-2R1B, 504-903-2R1A	2022FA	\$12,000.00		St. Cat's, Union Grove	HS	Criminal Justice	
1021		Multi-Recipient	504-900-2K1B, 504-903-2K1B	2022FA	CANCELED		Harberside, Westosha-Central	HS	Criminal Justice	
1022		Multi-Recipient	504-174-3E1A, 504-905-3E1A	2023SP	\$12,000.00		Badger, Elkhorn, Waterford	HS	Criminal Justice	
1023		Multi-Recipient	504-174-3R1A, 504-905-3R1B	2023SP	\$12,000.00		St. Cat's, Union Grove	HS	Criminal Justice	
1024		Multi-Recipient	504-174-3K1B, 504-905-3K1B	2023SP	CANCELED		Harberside, Westosha-Central	HS	Criminal Justice	
1025		Multi-Recipient	503-151-2Z1A, 531-312-2Z1A	2022FA	\$14,000.00		Delavan, East Troy, Case, Bradford, REAL, Racine Lutheran, St. Cats, Park, Waterford	HS	Fire/EMS	
1026		Multi-Recipient	531-312-2Z1A	2022FA	CANCELED		Delavan, East Troy, Case, Bradford, REAL, Racine Lutheran, St. Cats, Park, Waterford	HS	Fire/EMS	
1027		Multi-Recipient	503-130-3Z1A, 531-313-3Z1A	2023SP	\$14,000.00		Delavan, East Troy, Case, Bradford, REAL, Racine Lutheran, St. Cats, Park, Waterford	HS	Fire/EMS	

Revenue Generating Contract Estimate (69 Contracts):		\$706,900.00							
Transcripted Credit Contract Estimate (41 Contracts):		\$1,496,100.00							
Total High School Contract Estimate (110 Contracts):		\$2,203,000.00							
Contract #	2023- REAL School RUSD	Section	Term	Contract Estimate	Invoiced Amount	Multi-Recipient Contract Participating Schools	Course Type	Academy/Grant	Notes
1028	Multi-Recipient	531-313-3Z1A	2023SP	CANCELLED		Delavan-East-Troy, Case-Bradford, REAL-Racine-Lutheran, St. Cat's, Park-Waterford	HS	Fire/EMS	
1029	Multi-Recipient	156-018-2C1A, 152-081-2C1A	2022FA	\$9,500.00		Harborside, Bradford, Racine Lutheran, St. Cat's, Waterford, Wilmot	HS	IT Data Analytics	
1030	Multi-Recipient	150-182-3C1A, 150-194-3C1A	2023SP	\$9,500.00		Harborside, Bradford, Racine Lutheran, St. Cat's, Waterford, Wilmot	HS	IT Data Analytics	
1031	Multi-Recipient	801-198-2E1C, 809-188-2E1A	2022FA	\$9,500.00		East Troy, Elkhorn, Elkhorn Options	HS	Liberal Arts & Sciences	
1032	Multi-Recipient	801-198-2WYB, 809-188-2WYB	2022FA	\$9,500.00		Elkhorn, St. Cat's, Union Grove	HS	Liberal Arts & Sciences	
1033	Multi-Recipient	809-172-3E1B, 809-196-3E1B	2023SP	\$9,500.00		East Troy, Elkhorn, Elkhorn Options	HS	Liberal Arts & Sciences	
1034	Multi-Recipient	809-172-3WYA, 809-196-3WYA	2023SP	\$9,500.00		Elkhorn, St. Cat's, Union Grove	HS	Liberal Arts & Sciences	
1035	Multi-Recipient	806-177-2K1C	2022FA	\$3,000.00		Tremper, St. Cat's, Harborside, Lakeview, Reuther	HS	Nursing	
1036	Multi-Recipient	806-177-2B1A	2022FA	CANCELLED		Union-Grove, Waterford	HS	Nursing	Cancelled Per Melissa
1037	Multi-Recipient	809-188-3K1B, 543-102-3K1H	2023SP	\$6,000.00		Tremper, St. Cat's, Harborside, Lakeview, Reuther	HS	Nursing	
1038	Multi-Recipient	809-188-3B1A, 543-102-3B1D 444-337-2LMA 444-337-2LMB 444-316-2LMA 444-339-2LMA 444-339-2LMB 628-109-2LMA 664-105-2LMA 664-110-2LMA	2023SP	CANCELLED		Union-Grove, Waterford	HS	Nursing	
1039	Lakeview Technology Academy	444-331-3LMA 444-331-3LMB 612-102-3LMA 612-102-3LMB 620-310-3LMA 628-310-3LMA 628-310-3LMB 664-100-3LMA 664-120-3LMA	2022FA	\$37,000.00			HS		
1040	Lakeview Technology Academy	152-097-2LMA, 152-101-2LMA, 152-124-2LMA, 152-126-2LMA, 152-080-2LMA, 152-188-2LMA, 152-081-3LMA, 152-101-3LMA, 152-102-3LMA, 152-126-3LMA, 152-157-3LMA, 152-164-3LMA	2023SP	\$37,000.00			HS		
1041	Lakeview Technology Academy	(NO HOURLY RATE LISTED) 444-316-3C1A 444-316-3C1B 605-120-3C1A 605-120-3C1B 664-110-3C1A 664-110-3C1B 664-118-3C1A 664-118-3C1B 900-003-3CH1 900-003-3CH2 900-003-3CH3 900-003-3CH4 900-003-3CH5 900-003-3CH6 900-003-3CH7 900-003-3CH8 900-003-3CHA 900-003-3CHB 900-003-3CHC 900-003-3CHD 900-003-3CHE 900-003-3CHF 900-003-3CHG 900-003-3CHH 900-003-3CHJ 900-003-3CHK 900-003-3CHM 900-003-3CHN 900-003-3CHO 900-003-3CHP	2022FA	\$45,000.00			HS		
1042	Lakeview Technology Academy	(NO HOURLY RATE LISTED) 444-316-3C1A 444-316-3C1B 605-120-3C1A 605-120-3C1B 664-110-3C1A 664-110-3C1B 664-118-3C1A 664-118-3C1B 900-003-3CH1 900-003-3CH2 900-003-3CH3 900-003-3CH4 900-003-3CH5 900-003-3CH6 900-003-3CH7 900-003-3CH8 900-003-3CHA 900-003-3CHB 900-003-3CHC 900-003-3CHD 900-003-3CHE 900-003-3CHF 900-003-3CHG 900-003-3CHH 900-003-3CHJ 900-003-3CHK 900-003-3CHM 900-003-3CHN 900-003-3CHO 900-003-3CHP	2023SP	\$45,000.00			HS		
1043	REAL School RUSD		2023SP	\$5,000.00			HS		
1044	Multi-Recipient	533-126-2ZCA, 533-127-2ZCA	2022FA	\$3,500.00		Badger, Big Foot, Central, East Troy, Elkhorn, Williams Bay	VAN		
1045	Big Foot High School	533-126-2ZCB, 533-127-2ZCB	2022FA	\$3,500.00			VAN		
1046	Multi-Recipient	533-126-2ZCC, 533-127-2ZCC	2022FA	\$3,500.00		Burlington, Williams Bay	VAN		
1047	Multi-Recipient	533-128-2ZCA, 533-129-2ZCA	2022FA	\$3,500.00		Badger, Big Foot, Central, Coleman HS	VAN		
1048	Multi-Recipient	501-101-2ZCA	2022FA	CANCELLED		Big Foot, Burlington	VAN		
1049	Badger High School	501-101-2ZCB	2022FA	\$4,500.00			VAN		
1050	Waterford Union High School	809-198-2ZCA, 809-196-2ZCA	2022FA	\$9,000.00			VAN		
1051	Union Grove High School	809-198-2ZCB	2022FA	\$4,500.00			VAN		
1052	Lakeview Technology Academy	664-105-2LMA	2022FA	\$4,500.00			HS		
1053	Career and College Academy	316-170-2E1B, 316-140-2E1B	2022FA	\$4,500.00			HS	Culinary	

Revenue Generating Contracts:											
Contract Estimate (69 Contracts):		\$706,900.00									
Transcripted Credit Contract Estimate (41 Contracts):		\$1,496,100.00									
Total High School Contract Estimate (110 Contracts):		\$2,203,000.00									
Contract #	2023-	REAL School RUSD	Section	Term	Contract Estimate	Invoiced Amount	Multi-Recipient Schools	Contract Participating Schools	Course Type	Academy/Grant	Notes
1054		Burlington High School	Transcripted Credit	2022FA	\$65,000.00				TCCF		
1055		Burlington High School	Transcripted Credit	2022FA	\$65,000.00				TCCF		Year Long Classes
1056		Union Grove High School	Transcripted Credit	2022FA	\$65,000.00				TCCF		
1057		Career and College Academy	503-301-2E1A, 502-324-2E1A	2022FA	\$4,900.00				HS	Cosmo Criminal Justice	
1058		RUSD	504-900-2E1A, 504-900-2E1B, 504-900-2E1C	2022FA	\$12,000.00				HS		
1059		James Madison High School	543-200-2ZMA	2022FA	\$3,300.00				HS		
1060		Brookfield East High School	543-200-2ZMR, 543-200-2ZMW, 2ZMX, 2ZMY, 543-200-2ZMS	2022FA	\$15,000.00				HS		
1061		Burlington High School	543-200-2ZML, 543-200-2ZMT	2022FA	\$6,600.00				HS		
1062		Muskego High School	543-200-2ZMQ, 543-200-2ZMP	2022FA	\$6,600.00				HS		
1063		South Milwaukee High School	543-200-2ZME	2022FA	\$3,300.00				HS		
1064		St. Catherine's High School	543-200-2RMC	2022FA	\$3,300.00				HS		
1065		Indian Trail High School	543-200-2ZMN	2022FA	\$3,300.00				HS		
1066		Wilmet High School	543-200-2Z1A	2022FA	\$3,300.00				HS		
1067		James Madison High School	543-200-2ZMD	2022FA	\$3,300.00				HS		
1068		South Division High School	543-200-2ZMC	2022FA	\$3,300.00				HS		
1069		Milwaukee Public Schools	543-200-2ZMB	2022FA	\$3,300.00				HS		
1070		East Troy High School	543-200-2ZMU	2022FA	\$3,300.00				HS		
1071		Oak Creek High School	543-200-2ZMF & 2ZMG	2022FA	\$6,600.00				HS		
1072		Badger High School	Transcripted Credit	2022FA	\$140,000.00				TCCF		Year Long Classes
1073		Badger High School	Transcripted Credit	2022FA	\$87,000.00				TCCF		
1074		REAL School RUSD	(Hourly Rate Indicated) 606-443-2C1A 606-443-2C1B 606-443-2C1C 606-443-2C1D 606-443-2C1E 606-443-2C1F 900-003-2CH1 900-003-2CH2 900-003-2CH3 900-003-2CH4 900-003-2CH5 900-003-2CH6	2022FA	\$5,000.00				HS		
1075		Career and College Academy	Transcripted Credit	2022FA	\$3,100.00				TCCF		
1076		Lakeview Technology Academy	GRANT FUNDED 664-100-3LMA 664-120-3LMA	2023SP	\$6,600.00				HS		
1077		REAL School RUSD	(HOURLY RATE INDICATED) 444-446-3C1A 444-446-3C1B 900-003-3CHP	2023SP	\$1,000.00				HS		
1078		REAL School RUSD	(NON Instructional HOURLY RATE INDICATED) 900-003-2CHA 900-003-2CHB	2022FA	\$1,000.00				HS		
1079		REAL School RUSD	(NON Instructional HOURLY RATE INDICATED) 900-003-3CHQ 900-003-3CHR 900-003-3CHS	2023SP	\$1,000.00				HS		
1080		Multi-Recipient	Transcripted Credit	2022FA	\$86,000.00		Delavan HS, Delavan Tech School		TCCF		Year Long Classes
1081		Multi-Recipient	Transcripted Credit	2022FA	\$22,000.00		Delavan HS, Delavan Tech School		TCCF		Year Long Classes
1082		Christian Life High School	Transcripted Credit	2022FA	\$9,500.00				TCCF		Year Long Classes
1083		Christian Life High School	Transcripted Credit	2022FA	\$4,000.00				TCCF		Year Long Classes
1084		Elkhorn Area High School	Transcripted Credit	2022FA	\$79,000.00				TCCF		
1085		Waterford Union High School	442-324-2W7D, 457-309-2Z2A, 457-336-2Z2A, 442-321-2Z2A, 442-332-2Z2A, 442-322-2Z2B, 442-330-2Z2A	2022FA	\$20,000.00				HS		
1086		Elkhorn Area High School	Transcripted Credit	2022FA	\$15,000.00				TCCF		TRI 2 Classes
1087		Reuther High School	Transcripted Credit	2022FA	\$9,500.00				TCCF		
1088		Westosha Central High School	Transcripted Credit	2022FA	\$44,000.00				TCCF		
1089		Westosha Central High School	Transcripted Credit	2022FA	\$47,000.00				TCCF		Year Long Classes

Revenue Generating Contract Estimate (69 Contracts):		\$706,900.00										
Transcripted Credit Contract Estimate (41 Contracts):		\$1,496,100.00										
Total High School Contract Estimate (110 Contracts):		\$2,203,000.00										
Contract #	2023-	REAL School RUSD	Section	Term	Contract Estimate	Invoiced Amount	Multi-Recipient Schools	Contract Participating Schools	Course Type	Academy/Grant	Notes	
1090		East Troy High School	Transcripted Credit	2022FA	\$55,000.00				TCCF			
1091		East Troy High School	Transcripted Credit	2022FA	\$10,000.00				TCCF		TRI 2 Classes	
1092		Case High School RUSD	Transcripted Credit	2022FA	\$90,000.00				TCCF			
1093		Case High School RUSD	Transcripted Credit	2022FA	\$30,000.00				TCCF		Year Long Classes	
1094		Horlick High School	Transcripted Credit	2022FA	\$20,000.00				TCCF		Year Long Classes	
1095		Horlick High School	Transcripted Credit	2022FA	\$30,000.00				TCCF		Year Long Classes	
1096		Waterford Union High School	Transcripted Credit	2022FA	\$35,000.00				TCCF			
1097		Waterford Union High School	Transcripted Credit	2022FA	\$35,000.00				TCCF		Year Long Classes	
1098		Bradford High School	Transcripted Credit	2022FA	\$30,000.00				TCCF			
1099		Bradford High School	Transcripted Credit	2022FA	\$10,000.00				TCCF		Year Long Classes	
1100		Indian Trail High School	Transcripted Credit	2022FA	\$60,000.00				TCCF			
1101		Indian Trail High School	Transcripted Credit	2022FA	\$12,000.00				TCCF		Year Long Classes	
1102		Lakeview Technology Academy	Transcripted Credit	2022FA	\$4,500.00				TCCF			
1103		Tremper High School	Transcripted Credit	2022FA	\$70,000.00				TCCF			
1104		Tremper High School	Transcripted Credit	2022FA	\$40,000.00				TCCF		Year Long Classes	
1105		Oak Creek High School	Transcripted Credit	2022FA	\$15,000.00				TCCF			
1106		Park High School RUSD	Transcripted Credit	2022FA	\$30,000.00				TCCF			
1107		Park High School RUSD	Transcripted Credit	2022FA	\$10,000.00				TCCF		Year Long Classes	
1108		Nathan Hale High School	Transcripted Credit	2022FA	\$1,000.00				TCCF			
1109		Big Foot High School	Transcripted Credit	2022FA	\$3,000.00				TCCF		Year Long Classes	
1110		Big Foot High School	Transcripted Credit	2022FA	\$3,000.00				TCCF		Year Long Classes	
1111		Wilnot High School	Transcripted Credit	2022FA	\$105,000.00				TCCF			
1112		Wilnot High School	Transcripted Credit	2022FA	\$40,000.00				TCCF		Year Long Classes	
1113		Whitewater High School	Transcripted Credit	2022FA	\$8,500.00				TCCF			
1114		St. Catherine's High School	Transcripted Credit	2022FA	\$4,000.00				TCCF			
1115		Oak Creek High School	543-200-2ZMU & 2ZMK	2022FA	\$4,000.00				HS			
1116		Union Grove High School	543-200-1ZMB	2022SU	\$2,100.00	\$2,680.96			HS			
1117		Williams Bay High School	Transcripted Credit	2022FA	\$4,000.00				TCCF			

GATEWAY TECHNICAL COLLEGE DISTRICT BOARD

Roll Call	_____
Action	<u> x </u>
Information	_____
Discussion	_____

ADVISORY COMMITTEE ACTIVITY REPORT

Summary of Item: Approval of:
➤ New Members as of October 1, 2022

Staff Liaison: John Thibodeau

**GATEWAY TECHNICAL COLLEGE
ADVISORY COMMITTEES -- NEW MEMBERS
As of October 1, 2022**

PROGRAM Name	Job Title	Employer	County Represented
--------------	-----------	----------	--------------------

Accounting, Accounting Assistant

Mike Roszkowski	Director of Financial Reporting	Snap-On Credit	Out of District
-----------------	---------------------------------	----------------	-----------------

Arboriculture/Urban Forestry Technician

Ian Brown	Urban Forestry District Manager	City of Milwaukee	Out of District
Paul Fliss	Head Forester	WE Energies	Racine
Lee Fredericks	Territory Manager	Rainbow Tree Care	Out of District
August Hoppe	President	Hoppe Tree Service	Out of District
Matt Koepnick	City Forester	City of Racine	Racine
Jordan Orwig	Assistant Director of Service Line	SavATree	Out of District
Ben Reince	VP of Operations	Wachtel Tree Science	Out of District
John Paul Sanborn	Director of Professional Development	Hoppe Tree Care	Out of District
David Schneider	District Operations Manager	SavATree	Out of District

Automotive Maintenance Technician & Automotive Technology

Justin Harman	Service Advisor	Zeigler Toyota	Racine
---------------	-----------------	----------------	--------

Business Management, Small Business Entrepreneurship, Leadership Development, & Marketing

David Anderson	Applications Manager	Butter Buds	Racine
----------------	----------------------	-------------	--------

GATEWAY TECHNICAL COLLEGE DISTRICT BOARD

Roll Call _____
Action X
Information _____
Discussion _____

ANNUAL PROCUREMENT REVIEW

Summary of Item: A review of FY 2021-2022 procurements over \$50,000 by vendor was conducted, in accordance with Wisconsin Administrative Code TCS 6.05 (2)(h). A summary of purchases is attached and highlights of the review are as follows:

FY 2021-2022 purchases were reviewed to identify vendors for which annual purchases exceeded \$50,000. Based on the review, the College will undertake a competitive selection process for goods and services if the purchase volume is expected to exceed \$50,000 during the succeeding fiscal year.

The administration recommends approval of the report as required in Wisconsin Administrative Code TCS 6.05(2)(h).

Attachment: FY 2021-2022 Annual Procurement Review Report

Ends Statement,
Executive Limitations
and/or WI Administrative
Code Compliance: Governance Commitment Policy 1.1
Financial Condition Policy 3.5
Wisconsin Administrative Code TCS 6.05 (2)(h)
Annual review. Require an annual review, based on a report that aggregates multiple purchases of similar goods, supplies, and services of all procurements made under pars. (f) and (g), to determine if a more competitive procurement process should be used in succeeding years. The district board shall take formal action on this report and such action shall be reflected in the district board's proceedings.

Staff Liaison: Jason Nygard

Top806.docx 10/03/22

GATEWAY TECHNICAL COLLEGE

FY2021-2022 Annual Procurement Review

Vendor	Colleague / Check amount	Pcard amount	Total	Description
Adams Outdoor Advertising	\$65,810.00		\$65,810.00	Billboard advertising
Airgas	\$342,207.88	\$62,807.24	\$405,015.12	ESM Vendor, E& I Contract CNR01362, 15-002
Amazon		\$404,573.97	\$404,573.97	ESM Vendor, Omnia Partners R-TC-17006
Arthur J. Gallagher RMS Inc	\$54,103.39		\$54,103.39	Student coverage, reimbursed by students
Badger High School	\$539,292.93		\$539,292.93	Transcribed credits
Bigfoot High School	\$58,647.54		\$58,647.54	Transcribed Credits
Blackboard	\$124,702.43		\$124,702.43	WTCS Consortium award RFP 17-002
Bruker Scientific LLC	\$225,640.00		\$225,640.00	RFP 1644
Burlington Area School District	\$780,221.42		\$780,221.42	Lease payments & Transcribed credits
C & D Landscaping	\$53,866.50	\$237,692.00	\$291,558.50	RFP 1599 & 1608
CAE Healthcare, Inc	\$407,078.80	\$10,641.00	\$417,719.80	UW-Madison Cooperative Contract #19-5523
Camosy Comstruction	\$6,791,099.00		\$6,791,099.00	BID 1610, 1611, 1612, 1613 1615, 1616, 1628, 1631, 1647, 1649, 1650
Carmax Auto Superstores	\$52,366.00	\$99.00	\$52,465.00	Used Equipment
CDW-G	\$367,393.08	\$988,844.29	\$1,356,237.37	EMS vendor, Sourcewell NJPA 081419 / E&I CNR01439 SMA
Centurylink Communications LLC	\$57,602.28		\$57,602.28	District wide phone service
Chase Bank	\$18,381,664.12		\$18,381,664.12	Principal & interest payments
Chippewa Valley Technical College	\$119,249.08		\$119,249.08	WTCS Grant 06-072-124-131
Christiansen Aviation Inc	\$172,927.50		\$172,927.50	RFP 1582 & 1627
CIT Trucks, LLC	\$69,934.00	\$1,000.00	\$70,934.00	Used Equipment
City of Elkhorn Light & Water Dept		\$187,583.70	\$187,583.70	Sole source, utilities
City of Kenosha	\$110,900.38		\$110,900.38	EVOC & Horizon Leases & stormwater fees
Complete Office dba Emmons	\$384,850.41	\$1,174.78	\$386,025.19	RFQ 1569
Complex Security Solutions	\$332,494.97		\$332,494.97	RFP 1584
Delavan-Darien School District	\$278,216.92		\$278,216.92	Transcribed crdits
Delta Dental of Wisconsin	\$817,428.30		\$817,428.30	RFP 1543
Department of Veterans Affairs	\$60,631.47		\$60,631.47	Veteran Student Reimbursement
Districts Mutual Insurance	\$671,698.52		\$671,698.52	Insurance premiums
Diversified		\$416,333.14	\$416,333.14	UW#145646
East Troy Community School District	\$276,604.90		\$276,604.90	Transcribed credits
Elkhorn Area High School	\$65,496.82		\$65,496.82	Transcribed credits
Elkhorn Area School District	\$542,099.75		\$542,099.75	Transcribed credits
Ellucian Company, L.P.	\$687,459.30	\$5,775.00	\$693,234.30	Licensing & maintenance of existing systems
Elsevier Inc.	\$111,784.78	\$20,336.00	\$132,120.78	Health Science case studies, practice tests, patients reviews & exit exams
Employment Service Connection	\$77,127.21		\$77,127.21	COVID emergency staffing district wide for cleaning facilities
First Technologies	\$328,318.50		\$328,318.50	WTCS Contract #19-002 A2, RFP 1625
Fisher Scientific		\$61,549.73	\$61,549.73	ESM Vendor

GATEWAY TECHNICAL COLLEGE

FY2021-2022 Annual Procurement Review

Vendor	Colleague / Check amount	Pcard amount	Total	Description
Follett Higher Education Group, Inc	\$1,327,852.50		\$1,327,852.50	RFP 1577
Frasca	\$275,000.00		\$275,000.00	RFP 1614
G4 Secure Solutions	\$161,347.30		\$161,347.30	RFP 1503
Gateway Foundation	\$87,722.56		\$87,722.56	Lease payments
Gosiger Holdings dba Haas Factory	\$133,396.00		\$133,396.00	RFP 1632
Grainger		\$102,497.64	\$102,497.64	ESM Vendor, E&I Contract CNR01248
Gray Associates, Inc	\$151,319.84		\$151,319.84	RFP 1635
Greenwood Asher and Associates, LLC	\$160,000.00		\$160,000.00	RFP 1646
Hyland LLC	\$79,211.69		\$79,211.69	Omnia Contract R190904
Insight Public Sector		\$89,958.76	\$89,958.76	DOA #505ENT-M16-VARSOFTWARE-02
J&H Mechanical Associates of Wisconsin	\$55,947.04		\$55,947.04	RFP 1637
J Ewens Design	\$230,561.16		\$230,561.16	RFP 1576
Kaplan, Inc	\$60,900.00		\$60,900.00	NCLEX prep test vouchers
KBPort	\$291,101.00		\$291,101.00	RFP 1554
Kenosha Unified School Dist.	\$472,164.01		\$472,164.01	LakeView lease agreement, salaries, utilities, equipment. & transcribed credits
Kenosha Water Utility	\$56,493.91		\$56,493.91	Sole source, utilities
Kranz, Inc.		\$91,870.27	\$91,870.27	ESM Vendor, Omnia Partners #151148
Kunes Country Ford Lincoln, Inc	\$89,192.00	\$2,103.36	\$91,295.36	Used Vehicles
Lab Midwest LLC	\$832,816.00		\$832,816.00	WTCS 19-001
Martin Petersen	\$110,311.94		\$110,311.94	RFP 1544
Maureen Data Systems, Inc	\$565,368.00		\$565,368.00	NCPA 01-97
McKesson Medical Surgical		\$71,093.31	\$71,093.31	ESM vendor, Sourcewell #061417-MML
Medical College of Wisconsin, Inc	\$63,000.00		\$63,000.00	RFP 1550
Medical Shipment, LLC	\$53,997.00		\$53,997.00	Sole Source
Midwest Fiber Networks	\$78,005.60		\$78,005.60	RFP 4445
Nassco	\$116,176.62	\$53,184.84	\$169,361.46	Omni Partners R1621, R6210
NC3		\$60,038.45	\$60,038.45	Fiscal agent Lumina Foundation Grant
Northcentral Technical College	\$80,054.92		\$80,054.92	Various Consortium fees
One Diversified	\$380,541.01		\$380,541.01	UW Contract #17-5174
Partners in Design	\$566,780.54		\$566,780.54	RFP 1604, 1606, 1610, 1611, 1612, 1613, 1615, 1616, 1618, 1619, 1621, 1622, 1628, 1630, 1631, 1639, 1641, 1647, 1652
Paypal		\$92,211.03	\$92,211.03	Online Financial service allows payment using a secure internet account
PDS (Paragon Dev. Systems)		\$86,724.93	\$86,724.93	ESM vendor/UW Contract 21-2770

GATEWAY TECHNICAL COLLEGE

FY2021-2022 Annual Procurement Review

Vendor	Colleague / Check amount	Pcard amount	Total	Description
Purchase Power	\$74,000.02		\$74,000.02	Sole source,- Pitney Bowes postage meter fills
QPS Employment Group	\$69,016.50		\$69,016.50	COVID emergency staffing
Quadient, Inc	\$137,582.33		\$137,582.33	SOURCEWELL #041917-NPI
Quality Resource Group		\$155,960.97	\$155,960.97	RFP 1578
Quarles & Brady	\$69,557.32		\$69,557.32	WCTS RFP 1718-51
Racine Journal Times		\$67,191.68	\$67,191.68	Advertising
Racine Unified School District	\$515,035.06		\$515,035.06	Transcribed credits
Riley Construction	\$2,682,885.11		\$2,682,885.11	BID 1604, 1606, 1617, 1618, 1619, 1621, 1622, 1630, 1633, 1639, 1641, 1651, 1652
SHI International Corp	\$515,740.49		\$515,740.49	SOURCEWELL #081419-SHI
Snap-On Industrial	\$323,780.29		\$323,780.29	Sole source
Standard Insurance Company	\$297,600.75		\$297,600.75	RFP 1542
Stryker Medical	\$90,818.17		\$90,818.17	Intalere Contract #VQ10042_BEDS
Symetra Life Insurance Company	\$229,952.98		\$229,952.98	Consortium RFP, employee life ins.
Sysco Eastern Wisconsin, LLC	\$61,795.95		\$61,795.95	Culinary food purchases, exempt from bidding
TIAA Commercial Finance	\$249,516.60		\$249,516.60	AEPA contract 017-B
T Mobile USA, Inc	\$86,853.23	\$192.18	\$87,045.41	COVID Emergency purchase for hotspots
Tom Gagliardi Electric, Co, LLC	\$64,537.61		\$64,537.61	RFP 1544
Trane	\$829,339.79		\$829,339.79	US Communities/Omnia Partners #15-JLP-023
Union Grove High School	\$301,270.62		\$301,270.62	Transcribed credits
Universal Protection Service	\$446,685.36		\$446,685.36	RFP 1503 name change was GF4 security
US Cellular		\$70,196.98	\$70,196.98	District wide cellphone service
Vanguard Computers	\$550,202.40		\$550,202.40	DOA Contract #505ENT-M17-WICOMPUTER-07
WCA Group Health Trust	\$14,062,975.36		\$14,062,975.36	RFP 1496
WE Energies	\$1,350,731.82		\$1,350,731.82	Sole source, utilities
Wenk Aviation Insurance	\$55,426.00		\$55,426.00	Aviation insurance premiums
Westosha Central High School	\$315,632.18		\$315,632.18	Transcribed credits
Wilmot High School	\$242,074.90		\$242,074.90	Transcribed credits
WILS	\$88,566.34		\$88,566.34	WisPals chargebacks
Winters Service	\$61,835.00		\$61,835.00	RFP 1608
Wisconsin Retirement	\$6,850,646.26		\$6,850,646.26	Retirement
Totals	\$70,512,237.26	\$3,341,634.25	\$73,853,871.51	

XII. POLICY GOVERNANCE MONITORING REPORTS

A. End Statement Monitoring

1) College Ends Policy - The tri-county community benefits from affordable higher education that allows residents to develop knowledge and skills for family-supporting careers that contribute to the growth and sustainability of the local economy at a cost commensurate with the value of services provided.

Statement #2 Businesses benefit from a well-trained, educated workforce and access to customized business and workforce solutions that support a positive business climate.

2) Policy Governance Review – Ends Policy 4.1, Statement #2

GATEWAY TECHNICAL COLLEGE DISTRICT BOARD

Roll Call	_____
Action	_____ X _____
Information	_____
Discussion	_____

POLICY GOVERNANCE MONITORING REPORTS
Ends Statement Monitoring

College Ends Policy - The tri-county community benefits from affordable higher education that allows residents to develop knowledge and skills for family-supporting careers that contribute to the growth and sustainability of the local economy at a cost commensurate with the value of services provided.

#2 Businesses benefit from a well-trained, educated workforce and access to customized business and workforce solutions that support a positive business climate.

Staff Liaison: Matt Janisin

GATEWAY TECHNICAL COLLEGE DISTRICT BOARD

Roll Call _____
Action X
Information _____
Discussion _____

POLICY GOVERNANCE REVIEW
Review the wording of Ends Policy Statement #2

SECTION 4 – ENDS POLICY 4.1, STATEMENT 2

The tri-county community benefits from affordable higher education that allows residents to develop knowledge and skills for family-supporting careers that contribute to the growth and sustainability of the local economy at a cost commensurate with the value of services provided.

- 2) Businesses benefit from a well-trained, educated workforce and access to customized business and workforce solutions that support a positive business climate.**

Governance Process: Policy 1.4 – Board Policy Creation and Review
Board Liaison: Rebecca Matoska-Mentink

XII. POLICY GOVERNANCE MONITORING REPORTS

B. Executive Limitations

1. 3.4 Budgeting/Forecasting – Tax Levy and Mill Rate Confirmation
2. Policy Governance Review – 2.2 Presidential Accountability

GATEWAY TECHNICAL COLLEGE DISTRICT BOARD

Roll Call X
 Action ___
 Information ___
 Discussion ___

TAX LEVY AND MILL RATE CONFIRMATION

Summary of Item:

The fiscal year 2023 budget, approved by the Board on June 16, 2022, included a total tax levy of \$38,631,663 and a rate of 0.69588. The approved budget was based on the assumption that property values increase 5%. The actual increase in values reported by the WI Department of Revenue is 14.82%.

The administration recommends that the FY2023 rate be established at .63751, a decrease of 11.63% over the prior year's rate of .72144. The tax levies and rates for fiscal years 2022 and 2023 proposed are as follows:

	FY 2022 <u>Actual</u>	FY 2023 Budget as Approved <u>June 16, 2022</u>	% Incr <u>(Decr)</u>	FY 2023 <u>Proposed</u>	% Incr <u>(Decr)</u>
<u>Tax Levies</u>					
Operations	\$23,378,376	\$23,450,663	0.31%	\$23,520,094	0.61%
Debt	<u>14,765,000</u>	<u>15,181,000</u>	2.82%	<u>15,181,000</u>	2.82%
Total	<u>\$38,143,376</u>	<u>\$38,631.663</u>	1.28%	<u>\$38,701,094</u>	1.46%
<u>Mill Rates</u>					
Operations	0.44218	0.42242	-4.50%	0.38744	-12.4%
Debt	<u>0.27926</u>	<u>0.27346</u>	-2.10%	<u>0.25007</u>	-10.5%
Total	<u>0.72144</u>	<u>0.69588</u>	-3.54%	<u>0.63751</u>	11.63%

Attachments: Equalized Valuations and Mill Rates

Ends Statements and/or Executive Limitations
 Executive Limitations: Budgeting/Forecasting 3.4
 Staff Liaison: Jason Nygard

ROLL CALL

Jesse Adams	_____	Scott Pierce	_____
Ram Bhatia	_____	Jason Tadlock	_____
Benjamin DeSmidt	_____	Pamela Zenner-Richards	_____
William Duncan	_____	Rebecca Matoska-Mentink	_____
Zaida Hernandez-Irisson	_____		

Gateway Technical College Equalized Valuations and Mill Rates

Fund	Actual 2018-19	% Change	Actual 2019-20	% Change	Actual 2020-21	% Change	Actual 2021-22	% Change	Budget 2022-23	% Change
General	\$19,869,437	3.5%	\$20,896,436	5.2%	\$22,325,233	6.8%	\$20,295,171	-9.1%	\$20,486,094	0.9%
Special Revenue - Operational	2,049,205	0.0%	2,049,205	0.0%	2,049,205	0.0%	2,049,205	0.0%	2,000,000	-2.4%
Special Revenue - Non Aidable	0	0.0%	0	0.0%	0	0.0%	0	0.0%	0	0.0%
Debt Service	0	0.0%	0	0.0%	0	0.0%	989,000	0.0%	989,000	0.0%
Enterprise	45,000	0.0%	45,000	0.0%	45,000	0.0%	45,000	0.0%	45,000	0.0%
Operational Tax Levy	21,963,642	3.17%	22,990,641	4.68%	24,419,438	6.22%	23,378,376	-4.26%	23,520,094	0.61%
Debt Service	12,817,000	7.48%	13,775,000	7.47%	14,810,000	7.51%	14,765,000	-0.30%	15,181,000	2.82%
Total Tax Levy	\$34,780,642	4.71%	\$36,765,641	5.71%	\$39,229,438	6.70%	\$38,143,376	-2.77%	\$38,701,094	1.46%
Mill Rates										
Operations	0.50793	-2.4%	0.49909	-1.7%	0.49718	-0.4%	0.44218	-11.1%	0.38744	-12.4%
Debt Service	0.29640	1.7%	0.29903	0.9%	0.30153	0.8%	0.27926	-7.4%	0.25007	-10.5%
Total Mill Rate	0.80433	-0.93%	0.79812	-0.77%	0.79871	0.07%	0.72144	-9.67%	0.63751	-11.63%
Property Values										
Equalized Valuation - Taxable	\$43,241,826,839	5.70%	\$46,065,079,144	6.53%	\$49,116,024,050	6.62%	\$52,871,125,942	7.65%	\$60,706,724,116	14.82%
Value of Tax Exempt Computers ⁽¹⁾	\$146,668,800	0.0%	\$146,668,800	0.0%	\$146,668,800	0.0%	\$146,668,800	0.0%	\$146,668,800	0.0%
State Aid for Exempt Computers	\$122,369	2.4%	\$122,369	0.0%	\$122,369	0.0%	\$122,369	0.0%	\$137,601	12.4%

⁽¹⁾ Wisconsin Act 237 exempted business computers from being subject to property taxes beginning with the FY 2000 tax levy. The act calls for state aid to offset the loss of property tax revenue.

GATEWAY TECHNICAL COLLEGE DISTRICT BOARD

Roll Call	_____
Action	_____X_____
Information	_____
Discussion	_____

POLICY GOVERNANCE REVIEW **Review Wording of Policy 2.2**

SECTION 2 - GOVERNANCE PROCESS POLICY 2.2 PRESIDENTIAL ACCOUNTABILITY

The President is the Chief Executive Officer of the college and the Board's single official link with the operations of the College. All authority and accountability of staff, as far as the Board is concerned, is considered the authority and accountability of the President.

The President is accountable to the Board for

1. Accomplishment of the Board's policies on Ends.
2. College operation within the boundaries established in Board policies on Executive Limitations.
3. Accomplishment of the responsibilities set forth in the President's position description.
4. Accomplishment of annual goals and objectives established by the Board in consultation with the President.

The Board as a collective body will assess presidential performance annually. The President's performance will include the organizational performance of the college as a whole as well as the President's individual accomplishments.

Governance Process: Policy 1.4 – Board Policy Creation and Review
Board Liaison: Rebecca Matoska-Mentink

XIII. NEXT MEETING DATE AND ADJOURN

- A. Regular Meeting - Thursday, November 17, 2022, 8:00 am, Virtual and In-Person, Racine Campus, Quad Rooms R102/R104
- B. Adjourn