



Bryan D. Albrecht, Ed.D.  
President

May 6, 2015

**BURLINGTON CENTER**  
496 McCanna Pkwy.  
Burlington, WI 53105-3623  
262.767.5200

**CENTER FOR BIOSCIENCE  
& INFORMATION  
TECHNOLOGY**  
3520 - 30th Avenue  
Kenosha, WI 53144-1690  
262.564.3600

**ELKHORN CAMPUS**  
400 County Road H  
Elkhorn, WI 53121-2046  
262.741.8200

**HERO (HEALTH AND  
EMERGENCY RESPONSE  
OCCUPATIONS) CENTER**  
380 McCanna Pkwy.  
Burlington, WI 53105-3622  
262.767.5204

**HORIZON CENTER FOR  
TRANSPORTATION  
TECHNOLOGY**  
4940 - 88th Avenue  
Kenosha, WI 53144-7467  
262.564.3900

**SC JOHNSON  
iMET (iNTEGRATED  
MANUFACTURING  
& ENGINEERING  
TECHNOLOGY) CENTER**  
Renaissance Business Park  
2320 Renaissance Blvd.  
Sturtevant, WI 53177-1763  
262.898.7500

**KENOSHA CAMPUS**  
3520 - 30th Avenue  
Kenosha, WI 53144-1690  
262.564.2200

**LAKEVIEW ADVANCED  
TECHNOLOGY CENTER**  
9449 - 88th Avenue (Highway H)  
Pleasant Prairie, WI 53158-2216  
262.564.3400

**RACINE CAMPUS**  
1001 South Main Street  
Racine, WI 53403-1582  
262.619.6200

**WGTD HD**  
Your Gateway to Public Radio  
wgtd.org  
262.564.3800

262.741.8492 TTY  
866.971.7688 VP

EQUAL OPPORTUNITY/ACCESS/  
EMPLOYER AND EDUCATOR  
OFRECE IGUALDAD EN OPORTUNIDADES/  
ACCESO/EMPLEO Y EDUCACIÓN

[www.gtc.edu](http://www.gtc.edu)

**NOTICE OF MEETING**

**GATEWAY TECHNICAL COLLEGE  
DISTRICT BOARD  
Regular Meeting  
Thursday, May 14, 2015 - 8:00 a.m.  
Burlington Center, Room 100  
496 McCanna Parkway  
Burlington, WI 53105**

The Gateway Technical College District Board will hold its regular meeting on Thursday, May 14, 2015 at 8:00 a.m. at the Burlington Center, 496 McCanna Parkway, Room 100, Burlington, Wisconsin 53105. The agenda is included.

Following the regular meeting, the Gateway Technical College District Board will meet in executive session pursuant to Wisconsin Statutes 19.85(1)(c) to discuss the President's evaluation and personnel issues. The Board reserves the right to reconvene in open session to take action on items discussed in executive session.

Bryan D. Albrecht, Ed.D.  
President and Chief Executive Officer

# GATEWAY TECHNICAL COLLEGE DISTRICT BOARD

Regular Meeting – Thursday, May 14, 2015 – 8:00 a.m.

Burlington Center, Room 100

496 McCanna Parkway, Burlington, Wisconsin 53105

Info./ Disc	Action	Roll Call	<b>AGENDA</b>	Page
			<b>I. Call to Order</b> A. Open Meeting Compliance	3
		X	<b>II. Roll Call</b>	3
	X		<b>III. Approval of Agenda</b>	4
	X		<b>IV. Approval of Minutes</b> A. April 16, 2015 – Regular Meeting	4
X			<b>V. Citizen Comments</b>	17
X			<b>VI. Committee of the Whole</b> A. Vision 3.2.1 Collaboration with High School Partners	18
X			<b>VII. Chairperson's Report</b> A. Board Goals Monitoring B. Dashboard Monitoring C. District Board Report D. July Retreat Planning	21
X		22		
X		23		
X		24		
X			<b>VIII. President's Report</b> A. Announcements B. Johnson Bank Presentation	26
X		27		
			<b>IX. Operational Agenda</b>	28
	X		A. Action Agenda 1. Resolution B-2015 A.1 & A.2 – Manufacturing Remodel & Expansion South Building, Elkhorn Campus 2. FY 2014-15 Budget Revision #4 (J. Nygard) B. Consent Agenda 1. Finance a) Financial Statement and Expenditures over \$2,500 b) Cash and Investment Schedules 2. Personnel Report 3. Contracts for Instructional Delivery 4. Advisory Committee Activity Report 5. Program Title and AID Code Change Request 31-444-2 CNC Production Technician 6. Program Approval Gas Utility Construction & Service Technical Diploma 7. Approval of BIDs: a) Bid No. 1476 - 2015 Lighting Upgrade Racine Campus b) Bid No. 1477 - 2015 Parking Lot Repairs Racine Campus	29
		X		40
	X			48
				49
				57
				61
				63
				83
				88
				90
				92
				97
				<b>X. Policy Governance Monitoring Reports</b>
	X		A. Ends Statement Monitoring 1. End Statement #1 – <b>Gateway provides</b> academic programs and services that meet the current and future postsecondary technical education needs of our tri-community and assists in the preparation and transition of all learners. Academic Programs for All Learners and Online Learning Models. (Z. Haywood and J. Robshaw) B. Executive Limitations 1. 3.4 FY15-16 Budget/Forecasting Budget Approval (B. Thomey) 2. 3.5 Resolution No. F-2015-2016A.1 – Resolution Authorizing the Issuance of \$8,000,000 General Obligation Promissory Notes, Series F-2015-2016A (B. Thomey)	102
		X		104
		X		116
X			<b>XI. Board Member Community Reports</b>	121
X			<b>XII. Next Meeting Date and Adjourn</b> A. Regular Meeting - Thursday, June 18, 2015, 8:00 am, Kenosha B. Adjourn - Following the regular meeting, the Gateway Technical College District Board will meet in executive session pursuant to Wisconsin Statutes 19.85(1)(c) to discuss the President's evaluation and personnel issues. The Board reserves the right to reconvene in open session to take action on items discussed in executive session.	122
		X		122

# GATEWAY TECHNICAL COLLEGE DISTRICT BOARD

## Regular Meeting

Thursday, May 14, 2015 – 8:00 a.m.

Burlington Center, Room 100

496 McCanna Parkway, Burlington, Wisconsin 53105

- I. CALL TO ORDER
  - A. Open Meeting Compliance

## II. ROLL CALL

Ram Bhatia	_____
William Duncan	_____
Ronald J. Frederick	_____
Susan Greenfield	_____
Bethany Ormseth	_____
Scott Pierce	_____
Roger Zacharias	_____
Pamela Zenner-Richards	_____
Gary Olsen	_____

### **Our Positive Core – Gateway Technical College District Board**

Our shared strengths as a Board that we draw upon to do our work:

- Belief in the value of Gateway Technical College
- Commitment to our community
- Common sense of mission
- Mutual respect
- Sense of humor
- Open-mindedness & willingness to question

III. APPROVAL OF AGENDA

Items on the Consent Agenda for discussion

IV. APPROVAL OF MINUTES

A. April 16, 2015

GATEWAY TECHNICAL COLLEGE DISTRICT BOARD

Regular Meeting

April 16, 2015

The Gateway Technical College District Board met on Thursday, April 16, 2015 at the Elkhorn Campus, South Building Room 112, 400 County Road H, Elkhorn, WI. The meeting was called to order at 8:00 am by Gary Olsen, Chairperson.

I. Call to Order

A. Open Meeting Compliance

- K. Bartlett confirmed the meeting was duly noticed in accordance with state statutes for open meeting compliance.

II. Roll Call

Ram Bhatia	Present
William Duncan	Present
Ronald J. Frederick	Present
Susan Greenfield	Excused
Bethany Ormseth	Present
Scott Pierce	Present
Roger Zacharias	Present
Pamela Zenner-Richards	Excused
Gary Olsen	Present

Also in attendance were Bryan Albrecht, Kelly Bartlett, Mary Harpe, and 32 citizens/reporters.

III. Approval of Agenda

A. It was moved by R. Zacharias, seconded by W. Duncan and carried to approve the agenda.

IV. Approval of Minutes

A. It was moved by R. Frederick, seconded by S. Pierce and carried to approve the minutes of the March 19, 2015 Regular Meeting.

Susan Greenfield arrived at 8:09 am.

V. Citizen Comments

A. There were no in-person citizen comments, but there was a letter submitted to the Board from Walworth County Economic Development Alliance. WCEDA's letter follows:

- Dear Board of Trustees, I regret that I will not be able to thank you in person at your April Board meeting in Elkhorn. However, I want to let you know how grateful WCEDA is for your continued commitment to economic development in Walworth County through your generous arrangement with us. The new accommodations are beautiful. The South Building has a very contemporary, professional feel to it. I can envision doing a number of our events in the new conference space and would hope this would give good visibility to Gateway. I also want to extend my gratitude to you for your commitment to bringing CNC boot camp training to Elkhorn Campus as part of your Manufacturing Center expansion. This will be a great way to help local businesses and attract new ones.

VI. Chairperson's Report

A. Board Goals Monitoring

- Effective Meetings – Summary of Responses:
  - Ends statement #1 report was another example of the impact the college has on the lives of our students and community, great meeting. Good meeting. It was great to see Paul Gabriel. Enjoyed his legislative updates. Similarly enjoyed Lolli Haws presentation on next generation learning & academic concepts, and how Gateway helped with the programs selection. Good presentations by all. No Problems. Continues to be a positive, worthwhile experience. Board gets the information needed to make good decisions. Meeting went good, nice to see Paul again. I thought the presentation by the RUSD Superintendent was nice to show the connection to K-12.
- Business and Community Involvement
  - Beth Ormseth attended the United Way Annual Meeting and Dinner
  - Gary Olsen attended Emergency Response Training
  - Beth Ormseth attended the ITEEA National Conference
- District Boards Association Involvement
  - No District Boards Involvement
- College Involvement
  - Beth Ormseth attended the UW Parkside Articulation Signing
  - Pamela Zenner-Richards helped facilitate graduation for a student
- B. Dashboard Monitoring
  - Gary Olsen reported that Gateway is moving in the right direction, summer enrollment is moving upward. Gateway received a nice letter from Badger High School stating that Gateway was saving parents lots of money towards college credits. More than 300 students received college credits.

## VII. President's Report

### A. Announcements –

- Journey Members in Attendance: Sherry Bigalke, Paul Eggers, Maria Abrego, and Danyanna Dunn
- Bryan Albrecht welcomed everyone to the newly remodeled South Building on the Elkhorn Campus.
- A lot of guests in the audience today including Stan Manning, Chair of the Foundation Board, several other Foundation Board members in attendance today along with other special guests sharing about investments in the college.
- Stephanie Sklba announced the Survivor Tree that will be planted in the arboretum on the Kenosha Campus during Gateway's Earth Day Celebration on Saturday, April 25, 2015. The survivor tree was received from a 9/11 high school organization. There was one tree that survived the 9/11 attack and a high school organization graft the tree and shared one of these trees with Gateway.
- Bryan Albrecht announced that we have two 9/11 artifacts now; the I Beam at the HERO Center and now the survivor tree in the arboretum on the Kenosha Campus.
- Bryan Albrecht announced that Stephanie Sklba will receive a CTE Leader award next week, congratulations Stephanie.
- Jeff Robshaw spoke on the Boy Scout event that took place at Gateway. This was a great experience and showed the boys scouts many educational opportunities for their futures.
- Debbie Davidson announced that Gateway is the center of excellence for Lean in Education.
- Debbie Davison reported on Boot Camp Graduation, there were lots of opportunities after graduation, employees were hiring on the spot, one employer hired six people.
- Zina Haywood just got back from Italy where she was there setting up for staff and students. There are two opportunities, one for engineering and one for global enrichment.
- John Thibodeau reported that Gateway is continuing to work on the outreach and recruitment strategies, high school numbers are increasing, a successful call night took place the end of March, the overall philosophy of making connections with students is paying off. Stacy Riley was a huge driving force in the call nights and outreach efforts.
- Bryan announced our first guest Mike Reader, President of Precision Plus and great friend of Gateway.

- B. Introduction of Mike Reader, Precision Plus and Wally Mulvaney, Haas
- Mike Reader spoke about Precision Plus which has been in the community since 2000. Manufacturing opportunities in Walworth, very envious of Gateway's facility in Sturtevant, excited to see the expansion plans for the Elkhorn Campus. Biggest challenge for our ongoing success is finding the next generation of talented manufacturing professionals. To see the addition going on to the south building and to have partners like Haas, Morris Midwest, MTA, and CNC Industry Group along with others is great. Lots of other partners and excited to work with all of them to leverage more connections in the industry. Thank you for the commitment from the Gateway family, Precision Plus is here for the long haul.
  - Bryan Albrecht thanked Mike Reader for his vision, passion, and for bringing his energy to this project. Bryan thanked Precision Plus for their donation of \$50,000 to be used towards the Elkhorn Campus Manufacturing Expansion.
  - Wally Mulvaney said on behalf of Gene Haas, Haas Foundation, and HTEC Organization we are here to work with you to start the program and excited to be a part of it.
  - Haas network definition: HTEC network is an association of manufacturing technology educators who actively network with and leverage the capabilities and technologies of Haas, Haas factory outlets, HTEC partners to work with local industries, schools at all levels, government and manufacturing to exchange the best manufacturing practices and educational methods and to exploit the power of modern manufacturing equipment for educational purposes. This is a long definition, but what I saw recently that helped me understand this, at the ITEEA Conference recently in Milwaukee they had a blurb: The most important benefit that you can get from an association is the ability to contribute to and share with others as well as learn from their experiences. So what HTEC does is take all the experiences with all of the schools we are involved with, about 2,900 in USA and 400 in Europe and China is just starting up, sharing experiences, and giving an opportunity to help them grow their programs and overcome any obstacles. On behalf of Haas we are happy to get this going with a donation of \$10,000.
  - Bryan Albrecht thanked the Gene Haas Foundation. This money will be used for scholarships for students engaged in the machining programs.
  - Bryan Albrecht thanked everyone involved in the manufacturing expansion on the Elkhorn Campus. This facility is going to be world class.
- C. Tour of the Elkhorn Campus South Building
- A tour of the newly remodeled Elkhorn Campus South Building was given in two groups.

## VIII. Operational Agenda

### A. Action Agenda

There were no Action Agenda items for April 2015

### B. Consent Agenda

It was moved by R. Zacharias, seconded W. Duncan and carried that the following items in the consent agenda be approved:

1. **Finance**
  - a) **Financial Statement and Expenditures over \$2,500:** Approved the financial statement and expenditures as of March 31, 2015.
  - b) **Cash and Investment Schedules:** Approved the monthly cash reconciliation, investment schedule and investment report.
2. **Personnel Report:** Approved the personnel report of two (2) promotions; three (3) retirements; one (1) termination; no employment approvals-casual, non-instructional; and no employment approvals-adjunct faculty.
3. **Grants Awards:** There were no Grant Awards for Approval

4. **Contracts for Instructional Delivery:** Approved the contracts for instructional delivery report for March 2015
5. **Advisory Committee Activity Report:** Approved the advisory committee 2014-2015 meeting schedule and new members as of April 1, 2015

**IX. Policy Governance Monitoring Reports**

**A. Ends Statement Monitoring**

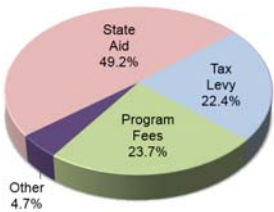
1. End Statement #5 – **Gateway provides** a positive return on taxpayer and community investment by leveraging its core capabilities in a financially and socially responsible manner. Quarterly Financials Report (B. Thomey)

**FY15 General Fund Financials**

General Fund Operations				
Stated in Thousands	FY14 Final	FY15 Budget	FY15 Forecast	Favorable (Unfavorable)
Tax Levy	\$ (48,885)	(17,250)	(17,250)	0
State Aids	(5,616)	(37,989)	(37,989)	0
Tuition & Fees	(18,917)	(19,885)	(18,295)	(1,590)
Other Revenue	(3,140)	(3,850)	(3,608)	(242)
<b>TOTAL REVENUES</b>	<b>\$ (76,558)</b>	<b>\$ (78,974)</b>	<b>\$ (77,142)</b>	<b>\$ (1,832)</b>
Salaries & Wages	\$ 45,780	46,563	46,235	328
Benefits	\$ 16,999	19,019	18,241	778
Other Expenses	\$ 11,911	13,862	13,136	726
<b>TOTAL EXPENSES</b>	<b>\$ 74,690</b>	<b>\$ 79,444</b>	<b>\$ 77,612</b>	<b>\$ 1,832</b>
Net Operating (Rev) Exp	\$ (1,868)	\$ 470	\$ 470	\$ -
Transfer Out	\$ 2,113	\$ 150	\$ 150	\$ 150
General Fund - (Surplus) Deficit	\$ 245	\$ 620	\$ 620	\$ 150

Tuition & fees reduced 8%, offset by a reduction in salaries, benefits & other expenses. Use of reserves for one time initiatives: HS TC; job placement svcs; Quality; temp. rental exp & Enrollment Task Force.

**FY15 Forecast General Fund Revenues**



Total Revenue Estimate: \$77.1M

- State aid expected as budgeted
- Tax Levy expected as budgeted
- Program fees \$1,590,000 less than budgeted
  - FTE down ~ 8%
- Other revenues \$242,000 below budget
  - AHS & Bookstore revenue
- Overall General Fund revenues are anticipated to be \$1,832,000 under budget

**FY15 Forecast General Fund Revenues**





## FY15 Forecast General Fund Expenses



Total Expense Estimate: \$77.6M

- Salary net reduction of \$328,000
  - Vacant position savings
  - Adjunct salaries deficit
- Fringe net reduction of \$778,000
  - Vacant positions budgeted for family coverage
  - WRS & FICA budgeted at a higher salary
- Other Expenses net reduction of \$726,000
  - Savings in supplies, service contracts, rentals & utilities
  - Uncollectable fees deficit
- Overall expenses are anticipated to be \$1,832,000 below budget

## FY15 Forecast General Fund Expenses



## FY15 Forecast General Fund Revenues & Expenses

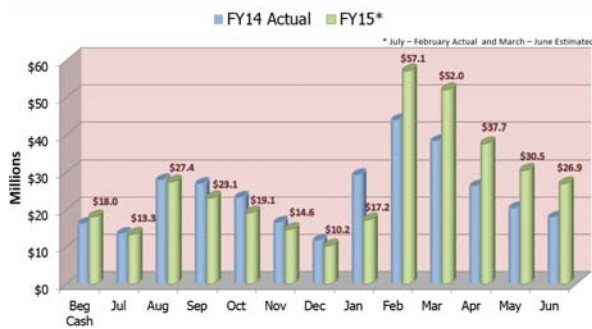


- FY 15 Forecast – Other Funds
  - Special Revenue Fund (grant activity)
    - Revenue expected to be \$3.5M less than budget; expenses expected to be \$2.6M due to Blueprint for Prosperity Grant estimates
  - SRF Non-Aidable Fund (financial aid, student activity funds, student clubs and consortiums)
    - Revenues & expenses expected to come in under budget
  - Capital Projects Fund (capital purchases)
    - Over \$12.5m in capital purchases made year-to-date; as of 3/31/15, \$4.4M in equipment \$8.1M in remodeling/construction
  - Debt Service Fund (debt activity for capital purchases)
    - Spending this year includes \$8.0M in debt principal payments and \$1.5M in interest payments on debt

Enterprise Fund (activities financed through user fees)

- No significant cost variances from budget for FY 2015; Revenues & expenses expected to come in close to budget

### FY 15 Forecast Operating Cash Balances



Following discussion, it was moved by R. Zacharias, seconded by R. Bhatia and carried that this report is evidence that the college is making progress on Ends Statement #5.

- End Statement #3 – Gateway provides leadership in tri-county community and workforce development through collaborative partnerships with business, industry, labor, and community organizations to support economic development, keeping in mind the desire not to duplicate services for an efficient use of taxpayer dollars. Workforce Development- Elkhorn Manufacturing Center (M. O'Donnell)
  - Mike O'Donnell thanked the Board of Trustees for their investment in Walworth County. Mike is proud of the Elkhorn Campus and the changes that are taking place.
  - Ben McFarland and Richard Shouse presented on the Elkhorn Manufacturing Expansion
  - Increasing capacity and updating the manufacturing facility in Elkhorn is greatly needed to meet the needs of Walworth County. Walworth County is hugely in need of hands on type of training.
  - Connecting with industry partners really helped to understand how to fill the challenges in the community. There are only a small pool of qualified skilled manufacturing workers and Gateway is here to change that. Moving forward, Gateway has a strong industry backing which is very important to our program. Gateway will offer additional programs and advanced programs to train students on skills that will meet the needs of the employers.
    - New Building for CNC and Manufacturing Presence
    - Advisory board: Precision Plus, Bliss Machine, Propshaft Supply, MicroPrecision, Intregra, Elkhorn High School (referendum )

### Plan



**Hass Manufacturing Center**  
Elkhorn Campus - South Building Addition & Renovation

1/2" = 1' - 0"  
REVISED  
101.04.149

**Partners in Design**  
ARCHITECTS

Following discussion, it was moved by S. Pierce, seconded by R. Zacharias and carried that this report is evidence that the college is making progress on Ends Statement #3.

**B. Executive Limitations**

1. 3.4 Budgeting/Forecasting, 3.5 Financial Condition (B. Thomey)
  - 3.4 Budgeting/Forecasting - Budgeting for any fiscal year or the remaining part of any fiscal year shall follow Board Ends priorities, control College financial risk, and accurately reflect projections of income and expenses. The President shall propose a budget after first seeking board input from all College constituencies. Budgets will become effective upon approval by the board.
  - 3.5 Financial Condition - The President shall administer the board approved budget without material deviation and shall protect the College from financial risk.
  - FY16 Proposed Budget Summary:

Revenues	
Tax Levy	\$ 17,500,083
State Aid	37,989,039
Tuition & Fees	18,410,994
Other Revenue	3,708,749
<b>Total Revenue</b>	<b>\$ 77,608,865</b>

Expenses	
Salaries & Wages	\$ 46,203,684
Employee Benefits	18,371,522
Other Expenses	13,033,659
<b>Total Expenses</b>	<b>\$ 77,608,865</b>

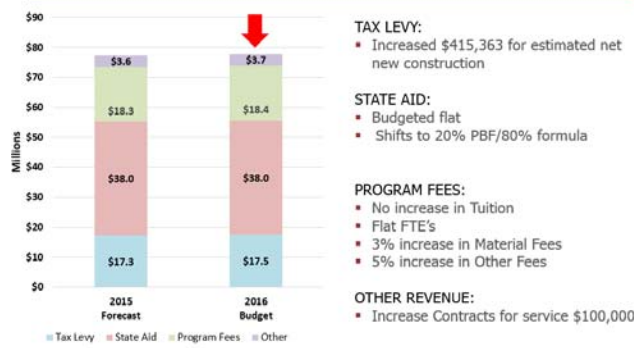
  

<b>Net Revenue / (Expenses)</b>	<b>\$ -0-</b>
---------------------------------	---------------

**General Fund Revenues**



## General Fund Revenues



## FY16 Tuition & Fees

	FY14 Actual	FY15 Forecast	FY16 Budget	Incr (Decr)	%
Tuition	\$16,376,974	\$15,672,142	\$15,672,142	\$0.00	0.0%
Material Fees	764,658	733,670	755,680	22,010	3.0%
Other Fees	1,774,454	1,888,736	1,983,172	94,436	5.0%
<b>Total</b>	<b>\$18,916,087</b>	<b>\$18,294,548</b>	<b>\$18,410,994</b>	<b>\$116,446</b>	<b>0.6%</b>

FY 2016 Tuition reflects a 0.0% tuition rate increase and flat enrollment.  
Cost per credit remains at \$125.85

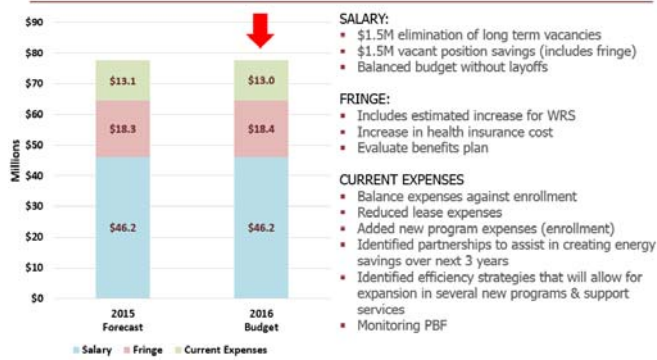
## FY16 Other Revenues

	FY2014 Actual	FY2015 Forecast	FY2016 Budget	Incr (Decr)	%
High School and Service Contracts	\$2,149,357	\$2,670,000	\$2,770,000	\$100,000	3.6 %
Book Store Royalties	592,404	588,334	588,334	-0-	0.0 %
Interest, Rent, and Other Misc. Revenue	398,712	350,415	350,415	-0-	0.0 %
<b>Total</b>	<b>\$3,140,473</b>	<b>\$3,608,749</b>	<b>\$3,708,749</b>	<b>\$100,000</b>	<b>2.7%</b>

## General Fund Expenses



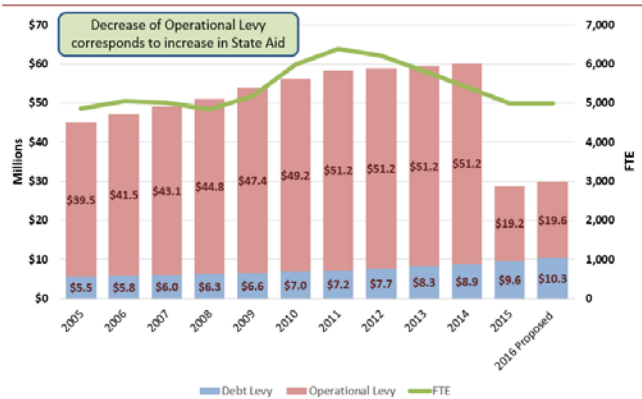
## General Fund Expenses



## FY16 Operating Expenses

	FY 2014 Actual	FY 2015 Forecast	FY 2016 Budget	Incr (Decr)	%
Salaries & Wages	\$45,779,815	\$46,235,910	\$46,203,684	(\$32,226)	(0.1%)
Employee Benefits	16,999,303	18,241,447	18,371,522	130,075	0.7%
Other Expenses	11,910,815	13,135,561	13,033,659	(131,973)	1.0%
<b>Total</b>	<b>74,689,933</b>	<b>\$77,612,918</b>	<b>\$77,608,865</b>	<b>(\$34,124)</b>	<b>0.04%</b>

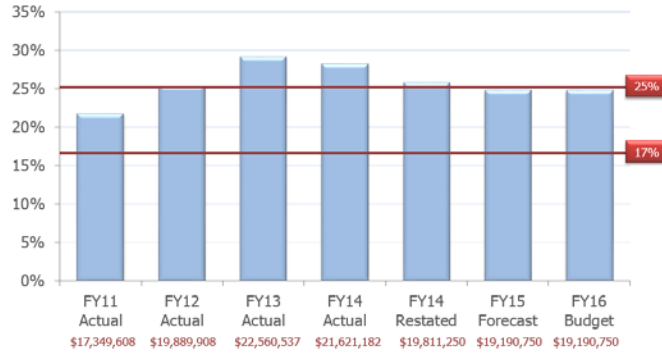
## Total Tax Levy



- Property Tax Impact:
  - Operating tax levy budgeted at \$19,594,288
    - Increase of \$415,363; net new construction
    - Slight increase of 2.17%
  - Debt levy budgeted at \$10,316,000
    - Increase of \$716,000
    - Slight increase of 7.46%
  - Total mill rate is 0.80059 compared to 0.77031 last year, an increase of 3.93%
  - Tax rate assumes assessments are flat
  - Homeowner will pay \$120.09 for a home valued at \$150,000
    - \$4.54 increase over last year

# General Fund Reserves

Percent Designated for Operations to Revenue



- 
- Long-Term Capital Financing - The capital borrowing plan includes \$12M borrowing for general equipment, building remodeling and improvements, expansion & site improvements.
  - Borrowing decrease of \$1M over last year
  - 7.46% increase in debt levy totaling \$10,316,000
    - Increase of \$716,000
- FY16 Capital Budget

Building Remodeling & Improvement Projects		Equipment		Expansion		Site Improvements	
CNC Manufacturing Lab	\$600,000			CNC Manufacturing Lab	\$400,000		
General Maintenance	500,000	New Program Classroom Furniture	\$250,000	Shooting Range	1,500,000	Parking Lot Resurface	\$1,000,000
Air Handler- Racine Lake Building	250,000	Academic Classroom Equipment	2,500,000				
Boiler Repairs - Kenosha	50,000	BWS Training Equipment	250,000				
Sprinkler Install - Kenosha	100,000	Police Academy Equipment	1,000,000				
ADA Audit Upgrades - District	100,000	IT Equipment & District Infrastructure	2,500,000				
Exterior Skin Repairs - Lincoln & Lake Buildings	250,000						
District Signage	250,000						
Police Academy & SIM City Remodel	500,000						
<b>Total:</b>	<b>\$2,600,000</b>	<b>Total:</b>	<b>\$6,500,000</b>	<b>Total:</b>	<b>\$1,900,000</b>	<b>Total:</b>	<b>\$1,000,000</b>

Following discussion, it was moved by R. Zacharias, seconded by R. Bhatia and carried to approve 3.4 Budgeting/Forecasting, 3.5 Financial Condition.

- 3.1 General Executive Constraint; 3.2 Human Relations and 3.3 Human Relations, Comp and Benefits (B. Whyte & J. Frost)
  - Policy 3.1 – General Executive Constraint - The President shall act at all times in an exemplary manner consistent with the responsibilities and expectations vested in that office. The President shall act in a manner consistent with Board policies and with those practices, activities, decisions, and organizational circumstances which are legal, prudent, and ethical.
  - Accordingly, the President may not:
    1. Deal with students, staff, or persons from the community in an inhumane, unfair or undignified manner.
    2. Make decisions except by a process where openness is maintained.
    3. Permit financial conditions which risk fiscal jeopardy or compromise Board Ends priorities.
    4. Provide information to the community, board, or College constituencies which is knowingly untimely, inaccurate, or misleading.
    5. Permit conflict of interest in awarding purchases or other contracts or hiring of employees.
    6. Allow the day-to-day operations to impede the vision or prevent the achievement of the Ends of the College.

7. Manage the College without adequate administrative policies.

8. Fail to take prompt and appropriate action when the President becomes aware of any violation or potential violation of any laws, rules, or regulations, or of any breach of Board policies.

9. Enter into any lease or purchasing agreement for any land or facilities nor name facilities or parts of facilities without prior Board knowledge and authorization.

**None of these Executive Constraints have been violated this past year.**

- Policy 3.2 – Human Relationships - The President shall create and sustain an environment for learning, working, and teaching that supports the development and realization of human potential and promotes the College's core values. Treatment of and dealing with students, staff, and persons from the community, shall be humane, fair, and dignified.
- Accordingly, the President may not: Operate without administrative policies and/or procedures which set forth staff and student rules, provide for effective handling of grievances (complaints), and protect against wrongful conditions.
  - *Administrative Procedures and College Practices Manual*
  - *Student Handbook*
  - *Faculty Handbook*
  - *Employee Handbook*

**These documents are distributed in hard copy and are on Gateway's Internet site and/or Intranet site. They are updated at least annually.**

- Accordingly, the President may not: Fail to comply with all laws, rules, and regulations pertaining to employees and students including those pertaining to:
  - *Discrimination*
  - *Equal Opportunity*
  - *Sexual Harassment*
  - *Rights of Privacy*
  - *Title IX*
  - *VAWA*

**There were no violations of these laws this past year.**

- Accordingly, the President may not: Prevent students and staff from using established grievance (complaint) procedures. Fail to acquaint students and staff with their rights and responsibilities.

**There were no violations this past year.**

- Policy 3.3 – Compensation and Benefits - The President shall maintain fiscal integrity and a positive public image with respect to employment, compensation, and benefits to employees, consultants, and contract workers.
- Accordingly, the President may not: Change his or her own compensation and benefits.  
**The Board adjusts B. Albrecht's contract annually.**
- Provide for or change the compensation and benefits of other employees except in accordance with collective bargaining agreements entered into by the Board or in accordance with salary schedules and plans adopted by the Board.  
**All staff are either covered by a Collective Bargaining Agreement under Act 10 or receive an annual compensation increase in accordance with the merit program.**
- Accordingly, the President may not: Promise or imply permanent or guaranteed employment. Employ persons not covered by a collective bargaining agreement for more than one year's duration without Board approval.

**None of these were violated this past year.**

Following discussion, it was moved by S. Pierce, seconded by R. Zacharias and carried to approve 3.1 General Executive Constraint; 3.2 Human Relations and 3.3 Human Relations, Comp and Benefits.

**X. Board Member Community Reports**

- Ram Bhatia mentioned that he was looking forward to the Spring District Boards meeting in Stevens Point.
- Bryan Albrecht congratulated Scott Pierce, Roger Zacharias, and Gary Olsen on their reappointment taking place in July.

**XI. Next Meeting Date and Adjourn**

- A. Budget Hearing – Monday, May 4, 2015, 7:00 pm, Racine Campus
- B. Regular Meeting – Thursday, May 14, 2015, 8:00 am, Burlington Center
- C. At approximately 10:18 a.m. it was moved by S. Pierce, seconded by R. Zacharias and carried by roll call vote that the meeting was adjourned and the District Board move to executive session pursuant to Wisconsin Statutes 19.85(1)(c) to discuss personnel issues. The Board reserves the right to reconvene in open session to take action on items discussed in executive session.

**Aye: 8**

**Nay: 0**

**Absent: 1**

**XII. Executive Session**

At approximately 10:25 am, the Board convened in executive session.

**XIII. Open Session**

At approximately 10:45 am, the meeting was called to order by Gary Olsen, Chairperson. It was motioned by S. Pierce, seconded by W. Duncan to accept administrations recommendation.

At approximately 10:50 am, it was moved by S. Pierce, seconded by R. Frederick and carried by roll call vote that the meeting adjourn.

**Aye: 8**

**Nay: 0**

**Absent: 1**

Submitted by,

Ronald J. Frederick  
Secretary



V. CITIZEN COMMENTS

- A. The Gateway Technical College District Board has established a limit of thirty minutes for citizen comments. Individuals will be limited to three to five minutes for their comments depending on the number of individuals who wish to address the Board. Citizens wishing to address the Board are to sign up prior to the meeting on the forms provided at the entrance to the meeting room.

- VI. COMMITTEE OF THE WHOLE
  - A. Vision 3.2.1 Collaboration with High School Partners

**GATEWAY TECHNICAL COLLEGE DISTRICT BOARD**

Roll Call \_\_\_\_\_  
Action \_\_\_\_\_  
Information   X    
Discussion \_\_\_\_\_

**COMMITTEE OF THE WHOLE**  
**Vision 3.2.1 Collaboration with High School Partners**

- VII. CHAIRPERSON'S REPORT
  - A. Board Goals Monitoring
  - B. Dashboard Monitoring
  - C. District Board Report
  - D. July Retreat Planning

# GATEWAY TECHNICAL COLLEGE DISTRICT BOARD

Roll Call \_\_\_\_\_  
Action \_\_\_\_\_  
Information   X    
Discussion \_\_\_\_\_

## CHAIRPERSON'S REPORT Board Goals Monitoring

Governance Process:  
Board Liaison:

Policy 1.2 – Governing Philosophy  
Gary Olsen

# GATEWAY TECHNICAL COLLEGE DISTRICT BOARD

Roll Call \_\_\_\_\_  
Action \_\_\_\_\_  
Information   X    
Discussion \_\_\_\_\_

## CHAIRPERSON'S REPORT Dashboard Monitoring

Governance Process:  
Board Liaison:

Policy 1.2 – Governing Philosophy  
Gary Olsen

# GATEWAY TECHNICAL COLLEGE DISTRICT BOARD

Roll Call \_\_\_\_\_  
Action \_\_\_\_\_  
Information   X    
Discussion \_\_\_\_\_

## CHAIRPERSON'S REPORT District Board Report

Governance Process:  
Board Liaison:

Policy 1.2 – Governing Philosophy  
Gary Olsen

# GATEWAY TECHNICAL COLLEGE DISTRICT BOARD

Roll Call \_\_\_\_\_  
Action \_\_\_\_\_  
Information   X    
Discussion \_\_\_\_\_

## CHAIRPERSON'S REPORT July Retreat Planning

Governance Process:  
Board Liaison:

Policy 1.2 – Governing Philosophy  
Gary Olsen



- VIII. PRESIDENT'S REPORT
  - A. Announcements
  - B. Johnson Bank Presentation

# GATEWAY TECHNICAL COLLEGE DISTRICT BOARD

Roll Call \_\_\_\_\_  
Action \_\_\_\_\_  
Information   X    
Discussion \_\_\_\_\_

## **PRESIDENT'S REPORT** **Announcements**

Policy/Ends Statement:      Policy 2.1

# GATEWAY TECHNICAL COLLEGE DISTRICT BOARD

Roll Call \_\_\_\_\_  
Action \_\_\_\_\_  
Information   X    
Discussion \_\_\_\_\_

## **PRESIDENT'S REPORT Johnson Bank Presentation**

Policy/Ends Statement:      Policy 2.1

IX. OPERATIONAL AGENDA

A. Action Agenda

1. Resolution B-2015 A.1 & A.2 – Manufacturing Remodel & Expansion South Building, Elkhorn Campus
2. FY 2014-15 Budget Revision #4 (J. Nygard)

# GATEWAY TECHNICAL COLLEGE DISTRICT BOARD

Roll Call \_\_\_\_\_  
Action   X    
Information \_\_\_\_\_  
Discussion \_\_\_\_\_

## RESOLUTION B-2015 A.1 & A.2 MANUFACTURING REMODEL & EXPANSION SOUTH BUILDING, ELKHORN CAMPUS

**Summary of Item:** Gateway Technical College is proposing to remodel and expand 10,973 square feet of the Elkhorn Campus South Building for Manufacturing. The proposed remodel will accommodate growth, improve efficiencies, and enhance the student experience.

The estimated cost to remodel and expand the Elkhorn Campus South Building into a Manufacturing Center is \$1,250,000

**Attachments:** Resolutions No. B-2015 A.1 & A.2  
Gateway's State Board submission including budget, floor plan, and environmental assessment of the proposed remodeling and expansion.

**Staff Liaison:** William R. Whyte

# Gateway Technical College

## RESOLUTION NO. B-2015 A.1

**WHEREAS**, Gateway Technical College is proposing to remodel and expand 10,973 square feet of the Elkhorn Campus for Manufacturing, and;

**WHEREAS**, the proposed remodel and expansion will accommodate growth, improve efficiencies, and enhance the student experience, and;

**WHEREAS**, the Gateway Technical College District Board has determined the estimated cost to remodel the Elkhorn Campus, South Building to be \$1,250,000;

**NOW, THEREFORE, BE IT RESOLVED**, that the Gateway Technical College Board, pursuant to s38.04(10), Wis. Stats., and Chapter TCS 5, of the Wisconsin Administrative Code, approves the remodel and expansion of the Elkhorn Campus, South Building.

---

Gary Olsen  
Chairperson

---

Ronald Frederick  
Secretary

May 14, 2015  
Date

# Gateway Technical College

## RESOLUTION NO. B-2015 A.2

**WHEREAS**, pursuant to s38.04(10), Wis. Stats, and Chapter TCS 5, of the Wisconsin Administrative Code, the Gateway Technical College District Board has approved the remodel and expansion of the Elkhorn Campus, South Building for an estimated cost of \$1,250,00;

**NOW, THEREFORE, BE IT RESOLVED**, that, pursuant to s38.04(10), Wis. Stats, and Chapter TCS 5, of the Wisconsin Administrative Code, the Gateway Technical College District Board requests the Wisconsin Technical College System Board approve the remodel and expansion of the Elkhorn Campus, South Building.

---

Gary Olsen  
Chairperson

---

Ronald Frederick  
Secretary

May 15, 2014  
Date

**REQUEST FOR APPROVAL**

EXPANSION and REMODELING

Wisconsin Technical College System Board

This request for Wisconsin Technical College Board approval for renovation and expansion of facilities is made pursuant to s.38.04(10), Wis. Stats and Chapter TCS 5, Wis. Adm. Code.

Project Title and Description:

Elkhorn Campus Manufacturing Expansion and Remodel

District: Gateway Technical College

Authorized Representative: Lawrence J. Paruszkiewicz

Date Submitted: May 30, 2015

Date of Requested WTCSB Review: July 14, 2015



## Need for Remodel of Facilities

Gateway Technical College will begin offering expanded manufacturing programs on the Elkhorn Campus in spring of 2016. Space for CNC machining, Welding, metal fabrication, Robotics and Automated Manufacturing is included in the proposed action to expand and remodel on the Elkhorn Campus.

The expansion portion of the project consists of a 3373 SF building addition for a CNC lab. The CNC addition will house 16 major pieces of equipment: mills, lathes and Swiss Screw machines.

The remodel includes upgrades and repairs to approximately 7800 SF of lab and corridor space. There is space allocated for additional manufacturing robots as well as additional booths for welding.

The new and remodeled spaces will permit program expansion to meet a demonstrated need for skilled welders, machinists and technicians for local manufacturers. Local manufacturers have been directly involved in the pre-planning for the project.

Headcount in the Welding program is projected to increase by 32. This has consistently been a high-demand program in Walworth County and expanded facilities will allow the college to serve that demand.

Local manufacturers have indicated they have difficulty finding trained workers to operate their shops. As of May 1, 2015 there were dozens of job openings in Walworth County in CNC and machining, welding and other manufacturing skills.

## Financial Impact

The \$1.25 million project will be funded by a bond issue and donations.

Operating costs are expected to increase slightly due to the addition of more and expanded program equipment operation. These costs are expected to be offset somewhat by improved efficiency in mechanical and lighting systems that will be included in the scope of work.

## Project Budget

Architectural fees	95,000
General construction	580,000
Electrical	240,000
Plumbing	70,000
HVAC	185,000
Project Contingency	80,000
Total Budget	1,250,000



**Partners in Design**  
**ARCHITECTS**

**Partners in Design  
Architects, Inc.**

**W I S C O N S I N**  
600 Fifty Second Street  
Suite 220  
Kenosha, WI 53140  
voice: 262.652.2800  
fax: 262.652.2812

**I L L I N O I S**  
2610 Lake Cook Road  
Suite 280  
Riverwoods, IL 60015  
voice: 847.940.0300  
fax: 847.940.1045

May 5, 2015

Mr. William Whyte  
Gateway Technical College  
Vice President, Human Resources & Facilities  
3520 30<sup>th</sup> Avenue  
Kenosha, Wisconsin 5144-1690

Re: Haas Manufacturing Center

**Dear Mr. Whyte:**

In response to the WTCS Board Policy 706, Sustainable Facilities, I am providing this confirmation that the Haas Manufacturing Center has been designed and engineered with the intent of this policy in mind. For your review and explanation of our intent, attached you find our LEED 2009 New Construction and Major Renovations project checklist for this project.

Recognizing that Gateway will not be certifying the building through the U.S. Green Building Council, it is important to understand that the points we have indicated on the Project Checklist are our best guess as to the points that are achievable and/or probable. As the final decision, relative to the awarding of points, is the decision of the U.S. Green Building Council, we cannot definitively provide a point range for the building design.

Sincerely,

Michael Risselada, AIA

[www.pidarchitects.com](http://www.pidarchitects.com)

**PASSION COLLABORATION VISION**

May 14, 2015



# LEED 2009 for New Construction and Major Renovations

Project Checklist

GTC - Elkhorn Haas Manufacturing Center  
5.4.15

## 13 Sustainable Sites Possible Points: 26

Y	?	N	Description	Points
Y			Prereq 1 Construction Activity Pollution Prevention	
1			Credit 1 Site Selection	1
	5		Credit 2 Development Density and Community Connectivity	5
	1		Credit 3 Brownfield Redevelopment	1
	6		Credit 4.1 Alternative Transportation—Public Transportation Access	6
1			Credit 4.2 Alternative Transportation—Bicycle Storage and Changing Rooms	1
3			Credit 4.3 Alternative Transportation—Low-Emitting and Fuel-Efficient Vehicles	3
2			Credit 4.4 Alternative Transportation—Parking Capacity	2
1			Credit 5.1 Site Development—Protect or Restore Habitat	1
1			Credit 5.2 Site Development—Maximize Open Space	1
1			Credit 6.1 Stormwater Design—Quantity Control	1
1			Credit 6.2 Stormwater Design—Quality Control	1
1			Credit 7.1 Heat Island Effect—Non-roof	1
1			Credit 7.2 Heat Island Effect—Roof	1
1			Credit 8 Light Pollution Reduction	1

## 4 Water Efficiency Possible Points: 10

Y	?	N	Description	Points
4			Prereq 1 Water Use Reduction—20% Reduction	2 to 4
2			Credit 1 Water Efficient Landscaping	2
2			Credit 2 Innovative Wastewater Technologies	2 to 4
2			Credit 3 Water Use Reduction	2 to 4

## 9 5 21 Energy and Atmosphere Possible Points: 35

Y	?	N	Description	Points
9			Prereq 1 Fundamental Commissioning of Building Energy Systems	
5			Prereq 2 Minimum Energy Performance	
21			Prereq 3 Fundamental Refrigerant Management	
10			Credit 1 Optimize Energy Performance	1 to 19
7			Credit 2 On-Site Renewable Energy	1 to 7
2			Credit 3 Enhanced Commissioning	2
2			Credit 4 Enhanced Refrigerant Management	2
3			Credit 5 Measurement and Verification	3
2			Credit 6 Green Power	2

## 10 3 1 Materials and Resources Possible Points: 14

Y	?	N	Description	Points
2			Prereq 1 Storage and Collection of Recyclables	
1			Credit 1.1 Building Reuse—Maintain Existing Walls, Floors, and Roof	1 to 3
1			Credit 1.2 Building Reuse—Maintain 50% of Interior Non-Structural Elements	1
2			Credit 2 Construction Waste Management	1 to 2
2			Credit 3 Materials Reuse	1 to 2

## Materials and Resources, Continued

Y	?	N	Description	Points
2			Credit 4 Recycled Content	1 to 2
2			Credit 5 Regional Materials	1 to 2
1			Credit 6 Rapidly Renewable Materials	1
1			Credit 7 Certified Wood	1

## 10 3 2 Indoor Environmental Quality Possible Points: 15

Y	?	N	Description	Points
10			Prereq 1 Minimum Indoor Air Quality Performance	
3			Prereq 2 Environmental Tobacco Smoke (ETS) Control	
2			Credit 1 Outdoor Air Delivery Monitoring	1
1			Credit 2 Increased Ventilation	1
1			Credit 3.1 Construction IAQ Management Plan—During Construction	1
1			Credit 3.2 Construction IAQ Management Plan—Before Occupancy	1
1			Credit 4.1 Low-Emitting Materials—Adhesives and Sealants	1
1			Credit 4.2 Low-Emitting Materials—Paints and Coatings	1
1			Credit 4.3 Low-Emitting Materials—Flooring Systems	1
1			Credit 4.4 Low-Emitting Materials—Composite Wood and Agrifiber Products	1
1			Credit 5 Indoor Chemical and Pollutant Source Control	1
1			Credit 6.1 Controllability of Systems—Lighting	1
1			Credit 6.2 Controllability of Systems—Thermal Comfort	1
1			Credit 7.1 Thermal Comfort—Design	1
1			Credit 7.2 Thermal Comfort—Verification	1
1			Credit 8.1 Daylight and Views—Daylight	1
1			Credit 8.2 Daylight and Views—Views	1

## 4 2 Innovation and Design Process Possible Points: 6

Y	?	N	Description	Points
4			Prereq 1 Innovation in Design: Specific Title	1
2			Prereq 2 Innovation in Design: Specific Title	1
1			Credit 1.1 Innovation in Design: Specific Title	1
1			Credit 1.2 Innovation in Design: Specific Title	1
1			Credit 1.3 Innovation in Design: Specific Title	1
1			Credit 1.4 Innovation in Design: Specific Title	1
1			Credit 1.5 Innovation in Design: Specific Title	1
1			Credit 2 LEED Accredited Professional	1

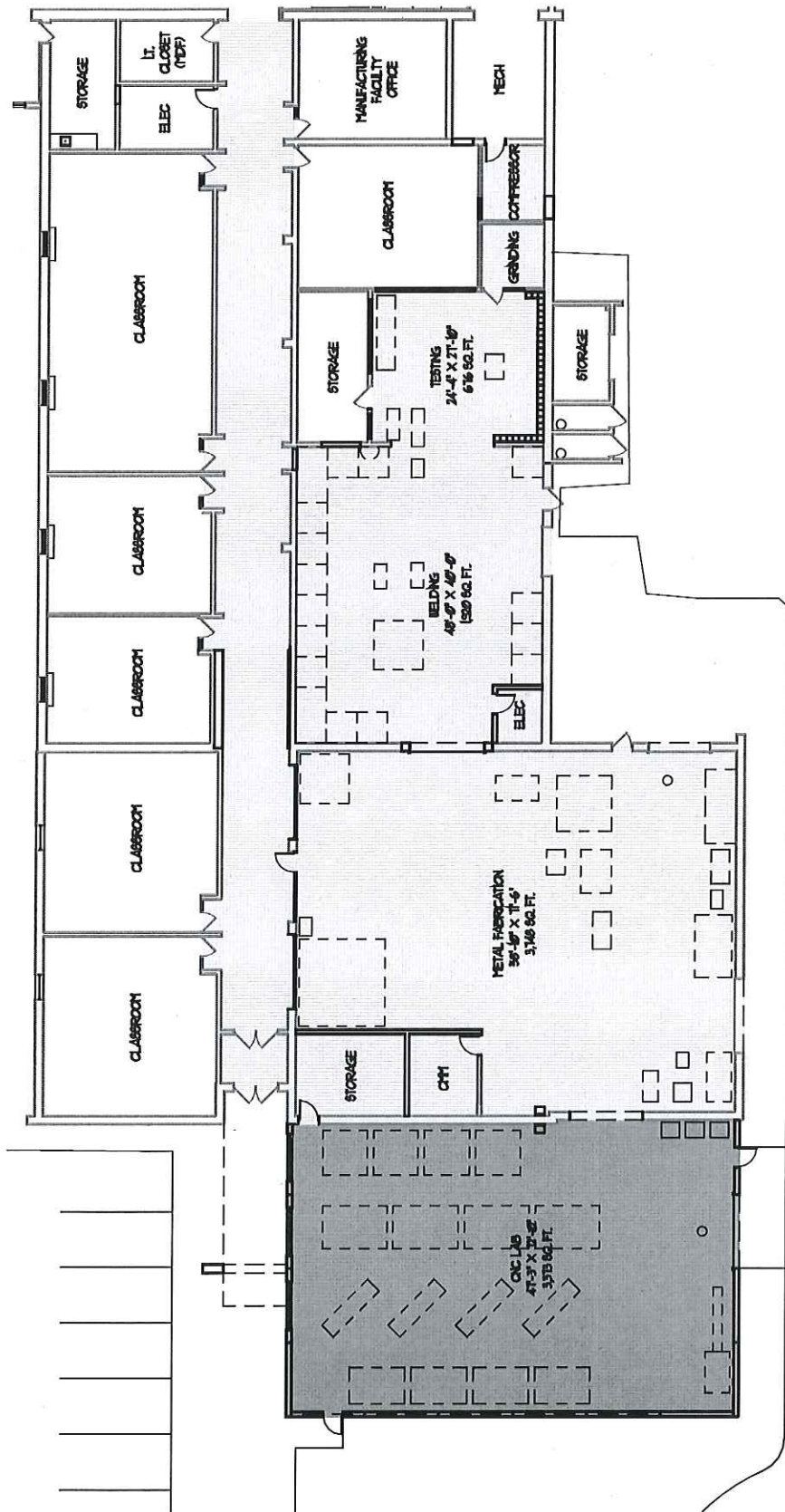
## Regional Priority Credits Possible Points: 4

Y	?	N	Description	Points
4			Prereq 1 Regional Priority: Specific Credit	1
1			Credit 1.1 Regional Priority: Specific Credit	1
1			Credit 1.2 Regional Priority: Specific Credit	1
1			Credit 1.3 Regional Priority: Specific Credit	1
1			Credit 1.4 Regional Priority: Specific Credit	1

## 56 11 43 Total Possible Points: 110

Certified 40 to 49 points Silver 50 to 59 points Gold 60 to 79 points Platinum 80 to 110





[Hatched Box] ADDITION 3,500 SF  
 [Shaded Box] RENOVATION 9,700 SF



1/25" = 1'-0"  
 05.04.15  
 191.14.149

**Haas Manufacturing Center**  
 Elkhorn Campus - South Building Addition & Renovation  
 © 2015 Partners in Design Architects, Inc.

# ENVIRONMENTAL ASSESSMENT

## Per TCS 12.04(2)(c)

**Project:** South Building- Manufacturing Expansion

**Location:** 400 County Rd. H  
Elkhorn, WI 53121

**Owner:** Gateway Technical College  
3520 30<sup>th</sup> Avenue  
Kenosha, WI 53144

### (1) CONTENT

To determine whether a Type II action is major and significantly affects the quality of the natural and physical environment of human beings, and to describe the alternative to the action, the Board shall conduct an Environmental Assessment and shall prepare a reviewable record in the form of a concise report. The preparation shall be done as early as possible in the planning process, but in any event, before contracts are let if the action involves construction by the district.

- a. The proposed action consists of the excavation of approximately 3400 square feet of pavement and turf area and constructing a single story office and school addition to an existing building.
- b. The proposed action will affect the human environment in the following ways:
  1. Air quality will be unaffected since there will be no significant increase in harmful emissions from combustion or chemical processes. Existing automobile traffic will be accommodated so auto emissions should not appreciably increase.
  2. Water quality or quantity of surface runoff will not be significantly affected. The Existing storm water control is adequate to accept the additional effluent from added hard surfaces.

The storm runoff has been calculated and is expected to increase, but the change is considered not significant by Gateway's consulting engineer and by the City of Elkhorn's engineer. It has been determined that the proposed action meets City of Elkhorn standards.

3. Plant life within the construction limits is mowed turf and ornamental shrubs. No rare or endangered plant species are known to be present.
  4. The animal habitat on the total 63-acre site will not be significantly altered in size or quality by the project. No rare or endangered animal species are known to be present on the site.
  5. The proposed action will serve existing populations and will not affect population nor housing in the City of Elkhorn or Walworth County.
  6. Existing land use and zoning will not change. The site is remote from existing residential populations.
  7. The aesthetic quality of the existing facility will be unchanged.
  8. The noise level in the immediate area will not be significantly impacted by the construction or the operation of the expanded building.
  9. Neighboring properties will continue to be enhanced by ongoing improvements to the existing facility.
  10. The social, economic and cultural effects of this project will not affect any area community.
- c. The most significant primary and secondary environmental effects of the proposed action are:
1. The primary effect is that a permanent structure of a 3400 sf footprint will be erected on the site.
  2. Second, the project will diminish the existing paved and turf area by an amount similar to the footprint.
- d. Possible alternatives to the proposed action are:
1. Taking no action would lead to the inability to meet new training demand.
  2. Adding the subject expansion at another location would have similar environmental impact.

e. Representatives of agencies contacted:

1. Lawrence Paruszkiewicz, Director, Building Services, Gateway Technical College.
2. Mark R. Madsen, P.E., Consulting Civil Engineer, Nielsen Madsen & Barber, S. C.,
3. Planning Department of the City of Elkhorn
4. Gateway Technical College District Board
5. Jeff Bridleman, Architect, Partners In Design Architects

There were no comments relating to significant environmental issues made by any of the above in regard to this proposal.

f. Evaluation Section. This section contains brief discussion of specific factors in regard to the proposed action. If the proposed action will lead to any of these results the need to prepare an environmental impact statement is increased. The proposed action will result in:

1. No irreversible environmental effects.
2. No stimulation of negative secondary effects.
3. No creation of a new harmful environmental effect.
4. No impact on geographically scarce environmental feature.
5. No impact of a precedent setting nature.
6. No significant controversy in known to exist.
7. No irrevocable foreclosure of future options.

# GATEWAY TECHNICAL COLLEGE DISTRICT BOARD

Roll Call       X    
 Action              
 Information         
 Discussion        

## FY 2014-2015 BUDGET REVISION #4

**Summary of Item:**

Administration is recommending budget revisions to both the General Fund and Capital Fund. The General Fund revision reflects finalized Local Tax Levy and State Aid allocations. The Capital Fund revision is a transfer of reserve balance to carry forward unspent prior year borrowings to complete work in progress. Detail by fund is provided below:

**BUDGET MODIFICATIONS**

**GENERAL FUND**

A budget revision is recommended to reflect the finalized local tax levy and state aid allocations in the General Fund.

<u>Resources / Revenues</u>	<u>Increase/(Decrease)</u>
Local Government	\$ (202,158)
State Aids	\$ 202,158

**CAPITAL FUND**

A budget revision is recommended to reflect a transfer of Capital fund reserves. This transfer will carry forward unspent prior year borrowings to complete work in progress. This will bring the fund into compliance that requires each fund to be balanced by function

<u>Resources / Revenues</u>	<u>Increase/(Decrease)</u>
Transfer from Reserves	\$ (1,204,465)
 <u>Uses / Expenditures</u>	
Physical Plant	\$ 1,204,465

**Attachment:**

FY 2014-2015 Budget Revision #4

**Ends Statements / Executive Limitations:**

Budgeting/Forecasting Policy 3.4, 6.

**Gateway Staff Liaison:**

Jason Nygard

**Roll Call**

Ram Bhatia	_____	Scott Pierce	_____
William Duncan	_____	Roger Zacharias	_____
Ronald J. Frederick	_____	Pamela Zenner-Richards	_____
Susan Greenfield	_____	Gary Olsen	_____
Bethany Ormseth	_____		



**DISTRICT: GATEWAY**  
 05/14/15

**FUND: COMBINED**

<u>RESOURCES</u>	<b>CURRENT BUDGET ADOPTED 02/19/15</b>	<b>MODIFIED BUDGET ADOPTED 05/14/15</b>	<b>CHANGE</b>
DESIGNATED FUND BALANCE	-	-	
REVENUES			
TAX LEVY	\$ 28,981,083	\$ 28,778,925	\$ (202,158)
STATE AID	42,748,039	42,950,197	202,158
OTHER STATE	165,000	165,000	-
PROGRAM FEES	17,034,937	17,034,937	-
MATERIAL FEES	797,467	797,467	-
OTHER STUDENT FEES	3,199,974	3,199,974	-
INSTITUTIONAL	9,630,000	9,630,000	-
FEDERAL REVENUE	40,588,000	40,588,000	-
<b>TOTAL REVENUE</b>	<b>143,144,500</b>	<b>143,144,500</b>	-
OTHER FUNDING SOURCES			
PROCEEDS FROM DEBT	13,315,000	13,315,000	-
OPERATING TRANSFERS IN	730,000	730,000	-
TRANSFER FROM RESERVES	420,500	1,624,965	1,204,465
<b>TOTAL RESOURCES</b>	<b>\$ 157,610,000</b>	<b>\$ 158,814,465</b>	<b>\$ 1,204,465</b>
 <u>USES</u>			
INSTRUCTION	\$ 61,330,136	\$ 61,330,136	\$ -
INSTR. RESOURCES	1,271,370	1,271,370	-
STUDENT SERVICES	57,079,749	57,079,749	-
GENERAL INSTITUTIONAL	11,254,783	11,254,783	-
PHYSICAL PLANT	25,608,962	26,813,427	1,204,465
AUXILIARY SERVICES	600,000	600,000	-
PUBLIC SERVICES	395,000	395,000	-
<b>TOTAL EXPENDITURES</b>	<b>157,540,000</b>	<b>158,744,465</b>	1,204,465
OTHER USES			
OPERATING TRANSFERS OUT	(430,000)	(430,000)	-
TRANSFER TO RESERVES	500,000	500,000	-
<b>TOTAL USES</b>	<b>\$ 157,610,000</b>	<b>\$ 158,814,465</b>	<b>\$ 1,204,465</b>

**DISTRICT: GATEWAY**  
 05/14/15

**FUND: GENERAL**

<u>RESOURCES</u>	<b>CURRENT BUDGET ADOPTED 02/19/15</b>	<b>MODIFIED BUDGET ADOPTED 05/14/15</b>	<b>CHANGE</b>
DESIGNATED FUND BALANCE			
REVENUES			
TAX LEVY	\$ 17,250,083	\$ 17,047,925	\$ (202,158)
STATE AID	37,824,039	38,026,197	202,158
OTHER STATE	165,000	165,000	-
PROGRAM FEES	17,034,937	17,034,937	-
MATERIAL FEES	797,467	797,467	-
OTHER STUDENT FEES	2,052,974	2,052,974	-
FEDERAL REVENUE	30,000	30,000	-
INSTITUTIONAL	3,820,000	3,820,000	-
<b>TOTAL REVENUE</b>	<b>78,974,500</b>	<b>78,974,500</b>	<b>-</b>
OTHER FUNDING SOURCES			
PROCEEDS FROM DEBT			
OPERATING TRANSFERS - IN	-	-	-
TRANSFER FROM RESERVES	1,000,500	1,000,500	-
<b>TOTAL RESOURCES</b>	<b>\$ 79,975,000</b>	<b>\$ 79,975,000</b>	<b>\$ -</b>
<u>USES</u>			
INSTRUCTION	\$ 51,225,136	\$ 51,225,136	\$ -
INSTR. RESOURCES	1,248,370	1,248,370	-
STUDENT SERVICES	11,077,749	11,077,749	-
GENERAL INSTITUTIONAL	7,946,283	7,946,283	-
PHYSICAL PLANT	7,947,462	7,947,462	-
AUXILIARY SERVICES	-	-	-
PUBLIC SERVICES	-	-	-
<b>TOTAL EXPENDITURES</b>	<b>79,445,000</b>	<b>79,445,000</b>	<b>-</b>
OTHER USES			
OPERATING TRANSFERS - OUT	150,000	150,000	-
TRANSFER TO RESERVES	380,000	380,000	-
<b>TOTAL USES</b>	<b>\$ 79,975,000</b>	<b>\$ 79,975,000</b>	<b>\$ -</b>

**DISTRICT: GATEWAY**  
 05/14/15

**FUND: SPECIAL REVENUE - OPERATIONAL FUND**

<u>RESOURCES</u>	<b>CURRENT BUDGET ADOPTED 02/19/15</b>	<b>MODIFIED BUDGET ADOPTED 05/14/15</b>	<b>CHANGE</b>
DESIGNATED FUND BALANCE			
REVENUES			
TAX LEVY	\$ 2,086,000	\$ 2,086,000	\$ -
STATE AID	2,284,000	2,284,000	-
PROGRAM FEES			
MATERIAL FEES			
OTHER STUDENT FEES			
FEDERAL REVENUE	4,389,000	4,389,000	-
INSTITUTIONAL	462,000	462,000	-
<b>TOTAL REVENUE</b>	<b>9,221,000</b>	<b>9,221,000</b>	<b>-</b>
OTHER FUNDING SOURCES			
PROCEEDS FROM DEBT			
OPERATING TRANSFERS - IN			
TRANSFER FROM RESERVES	(580,000)	(580,000)	-
<b>TOTAL RESOURCES</b>	<b>\$ 8,641,000</b>	<b>\$ 8,641,000</b>	<b>\$ -</b>
<b><u>USES</u></b>			
INSTRUCTION	\$ 5,831,000	\$ 5,831,000	\$ -
INSTR. RESOURCES			
STUDENT SERVICES	2,179,000	2,179,000	-
GENERAL INSTITUTIONAL	844,000	844,000	-
PHYSICAL PLANT	32,000.00	32,000	-
AUXILIARY SERVICES	-	-	-
PUBLIC SERVICES	335,000	335,000	-
<b>TOTAL EXPENDITURES</b>	<b>9,221,000</b>	<b>9,221,000</b>	<b>-</b>
OTHER USES			
OPERATING TRANSFERS - OUT	(580,000)	(580,000)	-
TRANSFER TO RESERVES	-	-	-
<b>TOTAL USES</b>	<b>\$ 8,641,000</b>	<b>\$ 8,641,000</b>	<b>\$ -</b>

DISTRICT: GATEWAY  
 05/14/15

**FUND: SPECIAL REVENUE - NON AIDABLE**

<u>RESOURCES</u>	CURRENT BUDGET ADOPTED 02/19/15	MODIFIED BUDGET ADOPTED 05/14/15	CHANGE
DESIGNATED FUND BALANCE			
REVENUES			
TAX LEVY			
STATE AID	\$ 2,570,000	\$ 2,570,000	\$ -
PROGRAM FEES	-	-	
MATERIAL FEES	-	-	
OTHER STUDENT FEES	887,000	887,000	-
INSTITUTIONAL	4,948,000	4,948,000	-
FEDERAL REVENUE	36,099,000	36,099,000	-
<b>TOTAL REVENUE</b>	<b>44,504,000</b>	<b>44,504,000</b>	<b>-</b>
OTHER FUNDING SOURCES			
PROCEEDS FROM DEBT			
OPERATING TRANSFERS - IN			
TRANSFER FROM RESERVES			
<b>TOTAL RESOURCES</b>	<b>\$ 44,504,000</b>	<b>\$ 44,504,000</b>	<b>\$ -</b>
<u>USES</u>			
INSTRUCTION			
INSTR. RESOURCES			
STUDENT SERVICES	\$ 43,753,000	\$ 43,753,000	\$ -
GENERAL INSTITUTIONAL	751,000	751,000	-
PHYSICAL PLANT			
AUXILIARY SERVICES			
PUBLIC SERVICES			
<b>TOTAL EXPENDITURES</b>	<b>44,504,000</b>	<b>44,504,000</b>	<b>-</b>
OTHER USES			
OPERATING TRANSFERS - OUT	-	-	-
TRANSFER TO RESERVES			
<b>TOTAL USES</b>	<b>\$ 44,504,000</b>	<b>\$ 44,504,000</b>	<b>\$ -</b>

DISTRICT: GATEWAY  
 05/14/15

**FUND: CAPITAL PROJECTS**

<u>RESOURCES</u>	CURRENT BUDGET ADOPTED 02/19/15	MODIFIED BUDGET ADOPTED 05/14/15	CHANGE
DESIGNATED FUND BALANCE			
REVENUES			
TAX LEVY-(TIF Refund)	\$ -	\$ -	\$ -
STATE AID	70,000	70,000	-
PROGRAM FEES			
MATERIAL FEES			
OTHER STUDENT FEES			
FEDERAL REVENUE	70,000	70,000	-
INSTITUTIONAL	100,000	100,000	-
<b>TOTAL REVENUE</b>	<b>240,000</b>	<b>240,000</b>	<b>-</b>
OTHER FUNDING SOURCES			
PROCEEDS FROM DEBT	13,000,000	13,000,000	-
OPERATING TRANSFERS - IN	730,000	730,000	-
TRANSFER FROM RESERVES	-	1,204,465	1,204,465
<b>TOTAL RESOURCES</b>	<b>\$ 13,970,000</b>	<b>\$ 15,174,465</b>	<b>\$ 1,204,465</b>
 <u>USES</u>			
INSTRUCTION	\$ 4,274,000	\$ 4,274,000	\$ -
INSTR. RESOURCES	23,000	23,000	-
STUDENT SERVICES	70,000	70,000	-
GENERAL INSTITUTIONAL	1,713,500	1,713,500	-
PHYSICAL PLANT	7,829,500	9,033,965	1,204,465
AUXILIARY SERVICES			
PUBLIC SERVICES	60,000	60,000	-
<b>TOTAL EXPENDITURES</b>	<b>13,970,000</b>	<b>15,174,465</b>	<b>1,204,465</b>
OTHER USES			
OPERATING TRANSFERS - OUT			
TRANSFER TO RESERVES	-	-	-
<b>TOTAL USES</b>	<b>\$ 13,970,000</b>	<b>\$ 15,174,465</b>	<b>\$ 1,204,465</b>

DISTRICT: GATEWAY  
 05/14/15

**FUND: DEBT SERVICE**

<u>RESOURCES</u>	CURRENT BUDGET ADOPTED 02/19/15	MODIFIED BUDGET ADOPTED 05/14/15	CHANGE
DESIGNATED FUND BALANCE			
REVENUES			
TAX LEVY	\$ 9,600,000	\$ 9,600,000	\$ -
STATE AID			
OTHER STATE			
PROGRAM FEES			
MATERIAL FEES			
OTHER STUDENT FEES			
INSTITUTIONAL	5,000	5,000	-
FEDERAL REVENUE			
<b>TOTAL REVENUE</b>	<b>9,605,000</b>	<b>9,605,000</b>	<b>-</b>
OTHER FUNDING SOURCES			
PROCEEDS FROM DEBT	315,000	315,000	
OPERATING TRANSFERS - IN			
TRANSFER FROM RESERVES			
<b>TOTAL RESOURCES</b>	<b>\$ 9,920,000</b>	<b>\$ 9,920,000</b>	<b>\$ -</b>
<u>USES</u>			
INSTRUCTION			
INSTR. RESOURCES			
STUDENT SERVICES			
GENERAL INSTITUTIONAL			
PHYSICAL PLANT	\$ 9,800,000	\$ 9,800,000	\$ -
AUXILIARY SERVICES			
PUBLIC SERVICES			
<b>TOTAL EXPENDITURES</b>	<b>9,800,000</b>	<b>9,800,000</b>	<b>-</b>
OTHER USES			
OPERATING TRANSFERS - OUT			
TRANSFER TO RESERVES	120,000	120,000	-
<b>TOTAL USES</b>	<b>\$ 9,920,000</b>	<b>\$ 9,920,000</b>	<b>\$ -</b>

**DISTRICT: GATEWAY**  
 05/14/15

**FUND: ENTERPRISE FUND**

<u>RESOURCES</u>	<b>CURRENT BUDGET ADOPTED 02/19/15</b>	<b>MODIFIED BUDGET ADOPTED 05/14/15</b>	<b>CHANGE</b>
DESIGNATED FUND BALANCE			
REVENUES			
TAX LEVY	\$ 45,000	\$ 45,000	\$ -
STATE AID			
PROGRAM FEES			
MATERIAL FEES			
OTHER STUDENT FEES	260,000	260,000	-
INSTITUTIONAL	295,000	295,000	-
FEDERAL REVENUE			
<b>TOTAL REVENUE</b>	<b>600,000</b>	<b>600,000</b>	<b>-</b>
OTHER FUNDING SOURCES			
PROCEEDS FROM DEBT			
OPERATING TRANSFERS - IN			
TRANSFER FROM RESERVES			
<b>TOTAL RESOURCES</b>	<b>\$ 600,000</b>	<b>\$ 600,000</b>	<b>\$ -</b>
 <u>USES</u>			
INSTRUCTION			
INSTR. RESOURCES			
STUDENT SERVICES			
GENERAL INSTITUTIONAL			
PHYSICAL PLANT			
AUXILIARY SERVICES	\$ 600,000	\$ 600,000	\$ -
PUBLIC SERVICES			
<b>TOTAL EXPENDITURES</b>	<b>600,000</b>	<b>600,000</b>	<b>-</b>
OTHER USES			
OPERATING TRANSFERS - OUT	\$ -	\$ -	-
TRANSFER TO RESERVES	-	-	-
<b>TOTAL USES</b>	<b>\$ 600,000</b>	<b>\$ 600,000</b>	<b>\$ -</b>

IX. OPERATIONAL AGENDA

B. Consent Agenda

1. Finance

a) Financial Statement and Expenditures over \$2,500

b) Cash and Investment Schedules

2. Personnel Report

3. Contracts for Instructional Delivery

4. Advisory Committee Activity Report

5. Program Title and AID Code Change Request 31-444-2 CNC Production Technician

6. Program Approval Gas Utility Construction & Service Technical Diploma

7. Approval of BIDs:

a) Bid No. 1476 - 2015 Lighting Upgrade Racine Campus

b) Bid No. 1477 - 2015 Parking Lot Repairs Racine Campus



# GATEWAY TECHNICAL COLLEGE DISTRICT BOARD

Roll Call  
Action X  
Information  
Discussion

## FINANCIAL STATEMENT AND EXPENDITURES OVER \$2,500

**Summary of Item:** Summary of revenue and expenditures as of **4/30/15**

Ends Statements and/or Executive Limitations  
Section 3 - Executive Limitations  
Policy 3.5 Financial Condition

**Staff Liaison:** **Bane Thomey**

05/06/15

**GATEWAY TECHNICAL COLLEGE  
2014-15 SUMMARY OF REVENUE & EXPENDITURES AS OF 4/30/15**

<u>COMBINED FUNDS</u>	2014-15 APPROVED BUDGET	2014-15 WORKING BUDGET	2014-15 ACTUAL TO DATE	PERCENT INCURRED
<b>REVENUE:</b>				
LOCAL GOVERNMENT	\$ 28,981,083	\$ 28,981,083	\$ 28,848,567	99.54%
STATE AIDS	42,913,039	42,913,039	40,650,440	94.73%
STATUTORY PROGRAM FEES	17,034,937	17,034,937	15,442,838	90.65%
MATERIAL FEES	797,467	797,467	746,195	93.57%
OTHER STUDENT FEES	3,199,974	3,199,974	2,752,836	86.03%
INSTITUTIONAL	9,630,000	9,630,000	7,515,296	78.04%
FEDERAL	40,588,000	40,588,000	31,952,794	78.72%
OTHER RESOURCES	<u>13,465,000</u>	<u>14,045,000</u>	<u>15,455,464</u>	110.04%
TOTAL REVENUE & OTHER RESOURCES	<u>\$ 156,609,500</u>	<u>\$ 157,189,500</u>	<u>\$ 143,364,430</u>	91.20%
<b>EXPENDITURES BY FUNCTION:</b>				
INSTRUCTIONAL	\$ 61,487,136	\$ 61,330,136	\$ 45,816,898	74.71%
INSTRUCTIONAL RESOURCES	1,271,370	1,271,370	1,023,408	80.50%
STUDENT SERVICES	56,142,749	57,079,749	44,915,658	78.69%
GENERAL INSTITUTIONAL	11,200,783	11,254,783	8,130,112	72.24%
PHYSICAL PLANT	25,662,962	25,608,962	24,163,041	94.35%
AUXILIARY SERVICES	600,000	600,000	422,650	70.44%
PUBLIC SERVICES	<u>395,000</u>	<u>395,000</u>	<u>330,772</u>	83.74%
TOTAL EXPENDITURES	<u>\$ 156,760,000</u>	<u>\$ 157,540,000</u>	<u>\$ 124,802,539</u>	79.22%
<b>EXPENDITURES BY FUNDS:</b>				
GENERAL	\$79,245,000	\$79,445,000	\$59,884,331	75.38%
SPECIAL REVENUE - OPERATIONAL	9,221,000	9,221,000	6,040,064	65.50%
SPECIAL REVENUE - NON AIDABLE	44,504,000	44,504,000	35,974,680	80.83%
CAPITAL PROJECTS	13,390,000	13,970,000	12,806,874	91.67%
DEBT SERVICE	9,800,000	9,800,000	9,673,940	98.71%
ENTERPRISE	<u>600,000</u>	<u>600,000</u>	<u>422,650</u>	70.44%
TOTAL EXPENDITURES	<u>\$ 156,760,000</u>	<u>\$ 157,540,000</u>	<u>\$ 124,802,539</u>	79.22%

05/06/15

**GATEWAY TECHNICAL COLLEGE  
2014-15 SUMMARY OF REVENUE & EXPENDITURES AS OF 4/31015**

<u>GENERAL FUND</u>	<b>2014-15 APPROVED BUDGET</b>	<b>2014-15 WORKING BUDGET</b>	<b>2014-15 ACTUAL TO DATE</b>	<b>PERCENT INCURRED</b>
<b>REVENUE:</b>				
LOCAL GOVERNMENT	\$ 17,250,083	\$ 17,250,083	\$ 17,040,203	98.78%
STATE AIDS	37,989,039	37,989,039	37,563,396	98.88%
STATUTORY PROGRAM FEES	17,034,937	17,034,937	15,442,838	90.65%
MATERIAL FEES	797,467	797,467	746,195	93.57%
OTHER STUDENT FEES	2,052,974	2,052,974	1,722,256	83.89%
FEDERAL REVENUE	30,000	30,000	24,950	83.17%
INSTITUTIONAL	3,820,000	3,820,000	2,650,786	69.39%
OTHER RESOURCES	<u>-</u>	<u>-</u>	<u>-</u>	
<b>TOTAL REVENUE &amp; OTHER RESOURCES</b>	<b><u>\$ 78,974,500</u></b>	<b><u>\$ 78,974,500</u></b>	<b><u>\$ 75,190,624</u></b>	<b>95.21%</b>
 <b>EXPENDITURES BY FUNCTION:</b>				
INSTRUCTIONAL	\$ 51,853,136	\$ 51,225,136	\$ 39,125,256	76.38%
INSTRUCTIONAL RESOURCES	1,248,370	1,248,370	1,010,643	80.96%
STUDENT SERVICES	10,249,749	11,077,749	7,851,189	70.87%
GENERAL INSTITUTIONAL	7,892,283	7,946,283	5,948,004	74.85%
PHYSICAL PLANT	<u>8,001,462</u>	<u>7,947,462</u>	<u>5,949,239</u>	74.86%
<b>TOTAL EXPENDITURES</b>	<b><u>\$ 79,245,000</u></b>	<b><u>\$ 79,445,000</u></b>	<b><u>\$ 59,884,331</u></b>	<b>75.38%</b>

05/06/15

**GATEWAY TECHNICAL COLLEGE  
2014-15 SUMMARY OF REVENUE & EXPENDITURES AS OF 4/30/15**

<u>SPECIAL REVENUE -OPERATIONAL FUND</u>	2014-15 APPROVED BUDGET	2014-15 WORKING BUDGET	2014-15 ACTUAL TO DATE	PERCENT INCURRED
REVENUE:				
LOCAL GOVERNMENT	\$ 2,086,000	\$ 2,086,000	\$ 2,163,364	103.71%
STATE AIDS	2,284,000	2,284,000	1,014,554	44.42%
FEDERAL	4,389,000	4,389,000	2,743,339	62.50%
INSTITUTIONAL	<u>462,000</u>	<u>462,000</u>	<u>557,698</u>	120.71%
TOTAL REVENUE & OTHER RESOURCES	<u>\$ 9,221,000</u>	<u>\$ 9,221,000</u>	<u>\$ 6,478,955</u>	70.26%
EXPENDITURES BY FUNCTION:				
INSTRUCTIONAL	\$ 5,940,000	\$ 5,831,000	\$ 3,617,935	62.05%
STUDENT SERVICES	2,070,000	2,179,000	1,627,251	74.68%
GENERAL INSTITUTIONAL	844,000	844,000	488,514	57.88%
PHYSICAL PLANT	32,000	32,000	29,871	93.35%
PUBLIC SERVICES	<u>335,000</u>	<u>335,000</u>	<u>276,493</u>	82.54%
TOTAL EXPENDITURES	<u>\$ 9,221,000</u>	<u>\$ 9,221,000</u>	<u>\$ 6,040,064</u>	65.50%

05/06/15

**GATEWAY TECHNICAL COLLEGE  
2014-15 SUMMARY OF REVENUE & EXPENDITURES AS OF 4/30/15**

<b><u>SPECIAL REVENUE-NON AIDABLE FUND</u></b>	<b>2014-15 APPROVED BUDGET</b>	<b>2014-15 WORKING BUDGET</b>	<b>2014-15 ACTUAL TO DATE</b>	<b>PERCENT INCURRED</b>
REVENUE:				
STATE AIDS	\$ 2,570,000	\$ 2,570,000	\$ 2,072,490	80.64%
OTHER STUDENT FEES	887,000	887,000	818,968	92.33%
INSTITUTIONAL	4,948,000	4,948,000	3,957,392	79.98%
FEDERAL	<u>36,099,000</u>	<u>36,099,000</u>	<u>29,105,683</u>	80.63%
TOTAL REVENUE & OTHER RESOURCES	<u>\$ 44,504,000</u>	<u>\$ 44,504,000</u>	<u>\$ 35,954,533</u>	80.79%
EXPENDITURES BY FUNCTION:				
STUDENT SERVICES	\$ 43,753,000	\$ 43,753,000	\$ 35,370,683	80.84%
GENERAL INSTITUTIONAL	<u>751,000</u>	<u>751,000</u>	<u>603,997</u>	80.43%
TOTAL EXPENDITURES	<u>\$ 44,504,000</u>	<u>\$ 44,504,000</u>	<u>\$ 35,974,680</u>	80.83%

05/06/15

**GATEWAY TECHNICAL COLLEGE  
2014-15 SUMMARY OF REVENUE & EXPENDITURES AS OF 4/30/15**

<u><b>CAPITAL PROJECTS FUND</b></u>	<b>2014-5 APPROVED BUDGET</b>	<b>2014-5 WORKING BUDGET</b>	<b>2014-5 ACTUAL TO DATE</b>	<b>PERCENT INCURRED</b>
REVENUE:				
LOCAL GOVERNMENT	\$ -	\$ -	\$ -	
STATE AIDS	70,000	70,000	-	0.00%
FEDERAL	70,000	70,000	78,822	112.60%
INSTITUTIONAL	100,000	100,000	71,081	71.08%
OTHER RESOURCES	<u>13,150,000</u>	<u>13,730,000</u>	<u>13,730,000</u>	100.00%
 TOTAL REVENUE & OTHER RESOURCES	 <u>\$ 13,390,000</u>	 <u>\$ 13,970,000</u>	 <u>\$ 13,879,903</u>	 99.36%
 EXPENDITURES BY FUNCTION:				
INSTRUCTIONAL	\$ 3,694,000	\$ 4,274,000	\$ 3,073,707	71.92%
INSTRUCTIONAL - RESOURCES	23,000	23,000	12,765	55.50%
STUDENT SERVICES	70,000	70,000	66,535	95.05%
GENERAL INSTITUTIONAL	1,713,500	1,713,500	1,089,597	63.59%
PHYSICAL PLANT	7,829,500	7,829,500	8,509,991	108.69%
PUBLIC SERVICE	<u>60,000</u>	<u>60,000</u>	<u>54,279</u>	90.47%
 TOTAL EXPENDITURES	 <u>\$ 13,390,000</u>	 <u>\$ 13,970,000</u>	 <u>\$ 12,806,874</u>	 91.67%

05/06/15

**GATEWAY TECHNICAL COLLEGE  
2014-15 SUMMARY OF REVENUE & EXPENDITURES AS OF 4/30/15**

<b><u>DEBT SERVICE FUND</u></b>	<b>2014-15 APPROVED BUDGET</b>	<b>2014-15 WORKING BUDGET</b>	<b>2014-15 ACTUAL TO DATE</b>	<b>PERCENT INCURRED</b>
REVENUE:				
LOCAL GOVERNMENT	\$ 9,600,000	\$ 9,600,000	\$ 9,600,000	100.00%
INSTITUTIONAL	5,000	5,000	1,067	21.34%
OTHER RESOURCES	<u>\$ 315,000</u>	<u>315,000</u>	<u>1,725,464</u>	547.77%
TOTAL REVENUE & OTHER RESOURCES	<u>\$ 9,920,000</u>	<u>\$ 9,920,000</u>	<u>\$11,326,531</u>	114.18%
EXPENDITURES BY FUNCTION:				
PHYSICAL PLANT	<u>\$ 9,800,000</u>	<u>\$ 9,800,000</u>	<u>\$ 9,673,940</u>	98.71%
TOTAL EXPENDITURES	<u>\$ 9,800,000</u>	<u>\$ 9,800,000</u>	<u>\$ 9,673,940</u>	98.71%

05/06/15

**GATEWAY TECHNICAL COLLEGE  
2014-15 SUMMARY OF REVENUE & EXPENDITURES AS OF 4/30/15**

<b><u>ENTERPRISE FUND</u></b>	<b>2014-15 APPROVED BUDGET</b>	<b>2014-15 WORKING BUDGET</b>	<b>2014-15 ACTUAL TO DATE</b>	<b>PERCENT INCURRED</b>
REVENUE:				
LOCAL GOVERNMENT	\$ 45,000	\$ 45,000	\$ 45,000	100.00%
OTHER STUDENT FEES	260,000	260,000	211,612	81.39%
INSTITUTIONAL	295,000	295,000	277,272	93.99%
FEDERAL	-	-	-	
TOTAL REVENUE & OTHER RESOURCES	<u>\$ 600,000</u>	<u>\$ 600,000</u>	<u>\$ 533,884</u>	88.98%
EXPENDITURES BY FUNCTION:				
AUXILIARY SERVICES	<u>\$ 600,000</u>	<u>\$ 600,000</u>	<u>\$ 422,650</u>	70.44%
TOTAL EXPENDITURES	<u>\$ 600,000</u>	<u>\$ 600,000</u>	<u>\$ 422,650</u>	70.44%



# GATEWAY TECHNICAL COLLEGE DISTRICT BOARD

Roll Call  
Action X  
Information  
Discussion

## CASH AND INVESTMENT SCHEDULES

**Summary of Item:** Monthly cash and investment schedules

Ends Statements and/or Executive Limitations:  
Section 3 - Executive Limitations  
Policy 3.5 Financial Condition

**Staff Liaison:** Bane Thomey

**GATEWAY TECHNICAL COLLEGE**  
**MONTHLY CASH RECONCILIATION**  
**FOR THE MONTH ENDING March 31, 2015**

**Cash Balance February 28, 2015** \$ 65,610,405.11

**PLUS:**

Cash Receipts 2,665,595.10

\$ 68,276,000.21

**LESS:**

Disbursement:

Payroll 3,983,487.76

Accounts Payable 5,334,013.67 9,317,501.43

**Cash Balance March 31, 2015** **\$ 58,958,498.78**

**DISPOSITION OF FUNDS**

Cash in Bank 9,866,794.93

Cash In Transit 20,494.75

Investments 49,067,059.10

Cash-on-hand 4,150.00

**TOTAL: March 31, 2015** **\$ 58,958,498.78**

GATEWAY TECHNICAL COLLEGE  
MONTHLY INVESTMENT REPORT

JULY 2014 - JUNE 2015

	Investments At Beginning Of Month	Investments At End Of Month	Change In Investments For Month	Investments Income For Month	YTD Investments Income	Average Monthly Rate of Investment Income
July-14	\$ 23,135,132	\$ 24,737,840	\$ 1,602,708	\$ 2,707	\$ 2,707	0.12
AUGUST	\$ 24,737,840	36,540,867	11,803,027	3,028	5,735	0.13
SEPTEMBER	36,540,867	35,544,699	(996,168)	3,832	9,567	0.12
OCTOBER	35,544,699	29,648,236	(5,896,463)	3,535	13,102	0.12
NOVEMBER	29,648,236	23,851,098	(5,797,138)	2,864	15,966	0.12
DECEMBER	23,851,098	19,253,438	(4,597,660)	2,339	18,305	0.12
January-15	19,253,438	24,455,748	5,202,310	2,311	20,616	0.13
FEBRUARY	24,455,748	63,559,548	39,103,800	3,800	24,416	0.14
MARCH	63,559,548	49,067,059	(14,492,489)	7,511	31,927	0.15
APRIL						
MAY						
JUNE						

**INVESTMENT SCHEDULE**

**March 31, 2015**

<b><u>NAME OF BANK/INST</u></b>	<b><u>DATE INVESTED</u></b>	<b><u>DATE OF MATURITY</u></b>	<b><u>AMOUNT</u></b>	<b><u>INTEREST RATE</u></b>	<b><u>PRESENT STATUS</u></b>
LOCAL GOV'T POOL	Various	Open	\$ 7,348,955	0.09	OPEN
WELLS FARGO	Various	Open	<u>\$ 41,718,105</u>	0.15	OPEN
		TOTAL	<u>\$ 49,067,059</u>		

**GATEWAY TECHNICAL COLLEGE DISTRICT BOARD**

Roll Call \_\_\_\_\_  
Action   X    
Information \_\_\_\_\_  
Discussion \_\_\_\_\_

**PERSONNEL REPORT**

**Summary of Item: Monthly Personnel Activity Report**

- **Promotion**
- **Retirement**
- **Resignations**
- **Termination**

**Ends Statements and/or Executive Limitations:  
Section 3: Executive Limitations  
Policy 3.3 - Compensation & Benefits**

**Staff Liaison: William Whyte**

05/14/15

**PERSONNEL REPORT  
MAY 2015**

**PROMOTION(S)**

Brandon Aswege, Student Express Associate/Campus Cashier, Student Success; Elkhorn; Annual Salary: \$40,913.60; previously Student Express Associate; effective April 20, 2015

**RETIREMENT(S):**

Kimberly A. Bremer, District Records Associate, Student Success; Racine; effective July 10, 2015

**RESIGNATION(S):**

Angela Carey, Research Specialist, Institutional Effectiveness; Kenosha; effective May 14, 2015

Beverly J. Hansen, Controller, Business Office, Kenosha, effective August 17, 2015

Elizabeth C. Hoffman, Student Express Associate/Campus Cashier, Student Success; Elkhorn; effective April 24, 2015

Joseph A. Sell, New Student Specialist, Student Success; Elkhorn; effective May 1, 2015

**TERMINATION(S):**

Gerald Fox, Instructor Radiography, Health Occupations; Burlington; effective June 26, 2015

Susan Herrmann, Instructor Radiography, Health Occupations; Burlington; effective May 8, 2015

# GATEWAY TECHNICAL COLLEGE DISTRICT BOARD

Roll Call	_____
Action	<u>  X  </u>
Information	_____
Discussion	_____

## CONTRACTS FOR INSTRUCTIONAL DELIVERY

- Summary of Items:
- 1. 38.14 Contract reports for April 2015 over \$500 -**  
lists all contracts for service of \$500 or greater completed or in progress for the time period of April 2015.
  - 2. 38.14 Contract reports for April 2015 under \$500 -**  
lists all contracts for service less than \$500 completed or in progress for the time period of April 2015.

Ends Statements and/or Executive Limitations:  
Policy 4.4 College Strategic Directions/Ends Statements #1 and #3

Staff Liaison:                   Debbie Davidson

**38.14 CONTRACT REPORT  
FOR THE PERIOD OF APRIL 2015**

Gateway Technical College  
Contracts over \$500.00

Contract Number	Company & City	Type of Recipient	Services	Type of Service	Dates	Estimated Cost of Service	Course Number	Number Served
2015-0318	Badger High School Lake Geneva	11	MSSC Marketing Principles Marketing/Sports Promotion Principles Found of ECE Principles of Interior Design Medical Terminology Steering & Susp Sys Sustainable Landscape Soils & Plant Nutr Plant Pests & Bene Greenhouse Crops Plant Biology	CT	1/12/15- 6/3/15	63,976.60	625-125T-3zta 104-101T-3ztd,e 104-109t-3zta 104-105T-3ZTA 307-148T- 3ZTA,B,C 304-155T-3ZTA 501-101T-3ZTA 602-124T-3ZTA,B 001-146T-3ZTA 001-147T-3ZTA 001-148T-3ZTA 001-151T-3ZTB 001-107T-3ZTA	197
2015-0357	KABA Kenosha	41	Fund. Of Supervision 3	CT	4/1/15- 4/29/15	1,860.00	196-460-3ZBK	16
2015-0360	Miniature Precision Components WATG 194 Walworth	47	Continuous Improvement Supervision Leadership Development	CT	3/19/15- 8/31/15	16,479.00	623-194-3ZBM 196-835-3ZBC	27
2015-0379	Kenall Manufacturing Kenosha	41	Intro. To Assembly	CT	3/10/15- 5/31/15	18,538.00	605-455-3ZBA	16
2015-0381	Honeywell Pleasant Prairie	41	Pumps	CT	1/8/15- 2/5/15	6,510/00	462-475- 3ZBA,3ZBB	5
2015-0384	NC3 Pleasant Prairie	41	Technical Assistance	TA	3/31/15- 6/30/15	10,325.00	900-019-3M1U 3M1V, 3M1W	1
2015-0387	Lakeview Pleasant Prairie	41	Mech Skills CAM Programming	CT	3/30/15- 6/11/15	25,448.10	628-109-3L1B 628-110-3L1B	38
2015-0389	LMI Packaging Pleasant Prairie	41	Basic Fire Extinguisher	CT	12/8/14	620.00	503-449- 2ZBP,2ZBq	10
2015-0392	Johnson Wax Racine	41	Project Beginning	CT	4/15/15- 4/22/15	1,600.00	103-404B-3IBA	12



2015-0399	Kenosha County Public Works Kenosha	41	Technical Assistance: Performance Appraisal	CT	5/4/15- 7/6/15	1,800.00	900-019-3M1H	1
-----------	--	----	--	----	-------------------	----------	--------------	---

**Type of Service Recipient**

- 11=Public Educational Inst./K-12
- 13=Public Educ. Inst./K-12-Slotter
- 15=Multiple Educational Inst.
- 18=Public Educ. Inst./Postsecondary
- 19=Private Educational Institutions
- 21=WI Local Governmental Units
- 22=Indian Tribal Governments
- 23=Economic Development Corp.
- 24=County Board of Supervisors
- 25=Multiple Local Governmental Units
- 31=State of Wisconsin
- 32=WI Dept. of Corrections

- 33=WI Division of Voc. Rehabilitation
- 35=Multiple State Governmental Units
- 41=Business & Industry
- 42=Community Based Organization
- 43=Workplace Education initiative
- 44= WMEP Related Contracts
- 45=Multiple Business &/or Industries
- 47= WAT Grant
- 51=Federal Government
- 55=Multiple Federal Government Units
- 61=Foreign Governments
- 62=States Other Than WI
- 63=Out of State Businesses

**Type of Service**

- C=Customized Instruction
- T=Technical Assistance
- F=Fiscal & Management Service

District Contact \_\_\_\_\_ Date \_\_\_\_\_

District Contact \_\_\_\_\_ Date \_\_\_\_\_  
I affirm that the foreign and out-of-state contracts in this report are in compliance with the requirements of s.38.14(3), Wisconsin Statutes.

President \_\_\_\_\_ Date \_\_\_\_\_

**38.14 CONTRACT REPORT  
FOR THE PERIOD OF APRIL 2015**

Gateway Technical College  
Contracts Under \$500.00

Contract Number	Company & City	Type of Recipient	Services	Type of Service	Dates	Estimated Cost of Service	Course Number	Number Served
	None for this period							

**Type of Service Recipient**

- 11=Public Educational Inst./K-12
- 13=Public Educ. Inst./K-12-Slotter
- 15=Multiple Educational Inst.
- 18=Public Educ. Inst./Postsecondary
- 19=Private Educational Institutions
- 21=WI Local Governmental Units
- 22=Indian Tribal Governments
- 23=Economic Development Corp.
- 24=County Board of Supervisors
- 25=Multiple Local Governmental Units
- 31=State of Wisconsin
- 32=WI Dept. of Corrections
- 33=WI Division of Voc. Rehabilitation
- 35=Multiple State Governmental Units
- 41=Business & Industry
- 42=Community Based Organization
- 43=Workplace Education initiative
- 44=WMEP Related Contracts
- 47 WAT Grant
- 45=Multiple Business &/or Industries
- 51=Federal Government
- 55=Multiple Federal Government Units
- 61=Foreign Governments
- 62=States Other Than WI
- 63=Out of State Businesses

**Type of Service**

- C=Customized Instruction
- T=Technical Assistance
- F=Fiscal & Management Service

District Contact \_\_\_\_\_ Date \_\_\_\_\_

District Contact \_\_\_\_\_ Date \_\_\_\_\_

I affirm that the foreign and out-of-state contracts in this report are in compliance with the requirements of s.38.14(3), Wisconsin Statutes.

President \_\_\_\_\_ Date \_\_\_\_\_

# Business & Workforce Solutions Contracts for Service as of May 1, 2015

Contract Number	ATC	Company	Company Person	Gateway Contact Person	Status	Dates	Course Name	Course Number	Instructor	Est. Cost
2015-0001		Gateway Technical College	Jennifer Charpentier	Rick Lofy	billed on 2014-0328		CNC Boot Camp XIX			0.00
2014-0328		Foundation Inc								
2015-0002	R	Burlington High School	Mike Raether	Jo Hart	billed 12/16/14	9/2-11/25/14	Nursing Assistant	543-300-2BBA	Jo Hart	2,195.85
2015-0003	R	Waterford High School	Keith Brandstetter	Jo Hart	billed 12/16/14	9/2-11/25/14	Nursing Assistant	543-300-2BBB	Jo Hart	2,195.85
2015-0004	R	Waterford	Mike Raether	Jo Hart	billed 12/16/14	92/1-12/9/14	Nursing Assistant	543-300-2BB1	Jo Hart	1,756.68
2015-0005	R	Burlington High School	Keith Bradstetter	Jo Hart	billed 12/16/14	9/2-11/25/14	Nursing Assistant	543-300-2BB2	Jo Hart	1,317.51
2015-0006	W	Waterford High School	Robert Kopydowski	Jo Hart	billed 12/16/14	9/2-12/9/14	Nursing Assistant	543-300-2ZBA	Jo Hart	2,195.85
2015-0007	R	Badger High School	Joel Adamczyk	Jo Hart	billed 12/16/14	9/2-12/9/14	Nursing Assistant	543-300-2ZBB	Jo Hart	439.17
2015-0008	K	Wilmut High School	Joel Adamczyk	Jo Hart	billed 12/16/14	9/2-12/9/14	Nursing Assistant	543-300-2ZBB	Jo Hart	439.17
2015-0009	W	Central High School	Gail Netzer-Jensen	Jo Hart	billed 12/16/14	9/3-12/8/14	Nursing Assistant	543-300-2EB1	Jo Hart	4,391.70
2015-0010	W	Salem	Kimberly Penza	Jo Hart	billed 12/16/14	9/3-12/8/14	Nursing Assistant	543-300-2EB2	Jo Hart	439.17
2015-0011	W	East Troy High School	Tina Bosworth	Jo Hart	billed 12/16/14	9/2-12/2/14	Nursing Assistant	543-300-2EBA	Jo Hart	4,391.70
2015-0012	W	East Troy	Tina Bosworth	Jo Hart	billed 12/16/14	9/2-12/2/14	Nursing Assistant	543-300-2EBA	Jo Hart	4,391.70
2015-0013	W	Elkhorn High School	Cora Rund	Jo Hart	billed 12/16/14	9/2-12/2/14	Nursing Assistant	543-300-2EBB	Jo Hart	3,074.19
2015-0014	W	Delavan/Darien High School	Lynn Olesen	Richard Hanson	sent 2/20/15	Fall 2014	Courses and supplies	103-102-2zba 462-103-2zba 462-106-2zba 620-111-2zba 606-121-2zba 804-370-2zba	R Hanson D Neuman Sanderson	0.00
2015-0015	R	Delavan	Lynn Olesen	Richard Hanson	billed 1/9/15	Fall 2014	TA Training Center	900-003-2M1A	R Hanson D Neuman Sanderson	79,050.00
2015-0016	R	InSinkErator Racine	Lynn Olesen	Richard Hanson	billed 1/9/15	Fall 2014	TA Training Center	900-003-2M1A	R Hanson D Neuman Sanderson	79,050.00
2015-0019	K	Insinkerator Racine	Lynn Olesen	Richard Hanson	billed 1/9/15	Fall 2014	TA Training Center	900-003-2M1A	R Hanson D Neuman Sanderson	79,050.00
2014-0345	K	Kenosha County Job Center	Rich Salisbury	Rick Lofy	billed on 2014-0345		CNC Boot Camp XIX			0.00
2015-0020		Kenosha								
2014-0348		TAA-Kenosha	Esperanza Reece	Rick Lofy	cancelled 5/10/14		CNC Boot Camp XIX			0.00
2015-0021	R	Cancelled	Esperanza Reece	Rick Lofy	cancelled 5/10/14		CNC Boot Camp XIX			0.00
2015-0024	R	RUSD	Bradley Haag	Jo Hart	billed 8/4/14	7/28-7/29/14	Blood Pressure	510-407-1RBA,B	Jo Hart	1,404.52
2015-0025	R	Racine	Bradley Haag	Jo Hart	billed 8/4/14	7/28-7/29/14	Blood Pressure	510-407-1RBA,B	Jo Hart	1,404.52
2015-0024		Kenosha Fire Department	Chief Poltrock	Gary Leyer	billed 6/30	6/25/2014	EMS CE 8hr	531-805-1BBA	B O'Connell	597.96
2015-0025		Kenosha								
2015-0025		Werner Electric	Amanda Marsicke	Randy Reusser	sent to billing 0-22-14	7/30/14-7/31/14	Technical Assistance	900-019-1m1w	R. Reusser	1,296.00
2015-0036	R	Neenah	Mark Hinterberg	Julie Capelli	billed 11/7	9/3-10/29/14	Nursing Assistant	543-300-2Z1A	J Capelli	5,270.04
2015-0036	R	Tremper High School	Mark Hinterberg	Julie Capelli	billed 11/7	9/3-10/29/14	Nursing Assistant	543-300-2Z1A	J Capelli	5,270.04
2015-0036	R	Racine	Mark Hinterberg	Julie Capelli	billed 11/7	9/3-10/29/14	Nursing Assistant	543-300-2Z1A	J Capelli	5,270.04

Contract Number	ATC	Company	Company Person	Company Contact Person	Gateway Contact Person	Status	Dates	Course Name	Course Number	Instructor	Est. Cost
2015-0037		KUSD Indian Trail Academy Kenosha	Mark Hinterberg	Mark Hinterberg	Julie Capelli	billed 11/7	9/3-10/30/14	Nursing Assistant	543-300-2Z1B	J Capelli	8,451.36
2015-0038		KUSD Tremper High School <del>CANCELLED</del>	Mark Hinterberg	Mark Hinterberg	Julie Capelli	cancelled	11/3-11/14/15	Nursing Assistant	543-300-2Z1C	J Capelli	0.00
2015-0039		KUSD Indian Trail Academy Kenosha	Mark Hinterberg	Mark Hinterberg	Julie Capelli	Sent to billing 1/30	11/3-11/19/15	Nursing Assistant	543-300-2Z1D	J Capelli	4,830.87
2015-0040		Gateway Technical College Foundation Inc	Jennifer Charpentier	Jennifer Charpentier	Robin Hoke	billed 12/2/14	10/13-11/13/14	Nursing Assistant	543-300-2R1G	J. Capelli	5,270.04
2015-0041		United Hospital System Kenosha	Nick Gaich	Nick Gaich	Michele Talhami	Sent to billing 9/8/14	8/6/14-8/21/14	Excel 1 Excel 2 Excel 3	103-417c-1zbu 103-432c-1zbu 103-466-1zbu	K. Sanderson	5,287.40
2015-0051		Gateway Technical College	Jennifer Charpentier	Jennifer Charpentier	Rick Lofy	billed 3/20/15	7/14-1/23/15	CNC Intro CNC Mach Op CNC Offsets Gauging Blueprint Rdg LEAN/Six Sigma Mfg Shop Safety Speaking Principles	420-342-2iba 420-343-2iba 420-344-2iba 420-345-1iba 421-376-1iba 623-146-1iba 625-125-1ibb 801-302-1ibb 804-370-1ibb	R Reusser Cayenberg R Wall N Petersen S Yousuf T Quinn R Lofy	33,481.37
2015-0052		Foundation Inc (CNC High School Boot Camp 2)	Jennifer Charpentier	Jennifer Charpentier	Rick Lofy						
2015-0061		MPC WATG 173 Walworth	Mary Backenger	Mary Backenger	Lauri Howard	I	7/18/14-8/31/15	Applied Math Quality Assurance Supervision 1 Leadership Coaching	196-899-1zbu	L. Oplatka	18,858.00
2015-0066	Ma	NC3	Roger Tadjewski	Roger Tadjewski	Larry Hobbs	billed 7/29/14	7/5-7/19/14	Train the Trainer	900-003-1KM1	L Hobbs T Niesen J Palacek R Gordon M Janisin	8,250.00
2015-0067		NC3 Edmond, OK	Roger Tadjewski	Roger Tadjewski	D. Davidson	Sent to billing 10/9	7/1/14-9/30/14	Technical Assistance - Train the Trainer	900-003-1m11	M. Janisin	5,000.00
2015-0068		KUSD LakeView Technology Center	Mark Hinterberg	Mark Hinterberg		billed 11/7	9/2-10/30/14	IT Essentials Routing CCNA 2	107-193-2L1A&B 150-124-211b	Pam See	19,948.32
2015-0069		KUSD LakeView Technology Center	Mark Hinterberg	Mark Hinterberg		Sent to billing 1/30/15	11/3-1/22/15	Network Concepts Web Programming	150-114-2L1A&B 152-148-2L1A	Pam See	24,760.53
2015-0070		KUSD LakeView Technology Center	Mark Hinterberg	Mark Hinterberg		billed 4/16/15	1/26-3/26/15	Routing CCNA 2 Game Prog I	150-124-3L1A&B 152-157-3L1A	Pam See	20,563.83
2015-0071		KUSD LakeView Technology Center	Mark Hinterberg	Mark Hinterberg		I	1/26-6/4/15	A+ Essentials Review	107-009-3L1a&B	Pam See	7,057.00
2015-0072		RCWDC Racine	Sue Lemanski	Sue Lemanski	Beth Tilley	PAID	7/7/14-8/8/14	Tech Assist - CDL	900-019-1m1g	Eagle	3,750.00
2015-0073		WCEDA Elkhorn	Cathy Anderson	Cathy Anderson	Richard Hanson	sent to billing 10-22-14	9/15/14-10/27/14	Funda of Supv 2	196-465-2ebw	R. Hanson	1,860.00
2015-0074		Kenosha Police Dept. Kenosha	Billing Office	Billing Office	Molly Meagher	Sent to billing 8/11/14	7/14/14-7/18/14	Firearms Instructor	504-467-1k1b	R. Merlin	2,370.00

Contract Number	ATC	Company	Company Person	Company Contact Person	Gateway Contact Person	Status	Dates	Course Name	Course Number	Instructor	Est. Cost
2015-0076		Caterpillar College Kenosha	Rachel Israel-Quinn	John Dahms	Cancelled	7/24/2014	Fire Ext. Training	503-447-1zbf	B. Pagliaroni	0.00	
2015-0079		Kenosha Fire Department	Kendra Martineli	Terry Simmons	billed 8/14/14	8/8/2014	EMS CE 4hr	531-801-1BBA	M Mansell	251.60	
2015-0080		Gateway Technical College Foundation Inc.	Jennifer Charpentier	Rick Lofy	billed 2/19/15	12/5/2014	CNC Intro CNC Mach Op CNC Offsets Gauging Blueprint Rdg LEAN/Six Sigma Mfg Shop Safety Speaking Principles Applied Math	420-342-2lbb 420-343-2lbb 420-344-2lbb 420-345-2lba 421-376-2lba 623-146-2lba 625-125-2lba 801-302-2lba 804-370-2lba	R Lofy Lou Neil R Wall Petersen R Hanson T Quinn	31,457.60	
2015-0081		Vision Plastics WATG 164 Delavan	Pat Jacobs	Lauri Howard	FA14 sent to billing 3-17-15	10/7/14-tbd	Beg. Project Adv Project Supervision	103-404b-2eba 103-404a-2ebc	K. Sanderson	7,148.00	
2015-0082		Compass Minerals Kenosha	Kendra Martineli	Kim Sanderson	Sent to billing 9-16-14	7/30/14-8/20/14	Intro to PCS-Office 2010	103-418h-1zba 103-418h-1zbb	K. Sanderson	2,730.00	
2015-0083		Birds Eye Foods WATG 141 Darien	Ken Kline	Lauri Howard	Sent to billing 2-16-15	8/4/14-8/15/14	Fund. Robotic Systems	628-410-1eba	JD Jones	2,954.00	
2015-0087		Big Foot High School Walworth	Mike Hinske	Mary Blue	billed 9/4	2014fa-2015sp	TA-technical support	900-019-2M11	TA	6,000.00	
2015-0088		Burlington High School Burlington	Eric Burling	Mary Blue	billed 9/4	2014fa-2015sp	TA-technical support	900-019-2M12	TA	6,000.00	
2015-0089		Westosha High School Salem	Lisa Albrecht	Mary Blue	billed 9/4	2014fa-2015sp	TA-technical support	900-019-2M13	TA	6,000.00	
2015-0090		Elkhorn High School Elkhorn	Jason Tadlock	Mary Blue	billed 9/4	2014fa-2015sp	TA-technical support	900-019-2M14	TA	6,000.00	
2015-0091		Evansville High School Evansville	Scott Everson	Mary Blue	billed 9/4	2014fa-2015sp	TA-technical support	900-019-2M15	TA	6,000.00	
2015-0092		Milwaukee Public Museum Milwaukee	Gaye-Lynn Clyde	Mary Blue	billed 9/4	2014fa-2015sp	TA-technical support	900-019-2M16	TA	2,000.00	
2015-0093		Union Grove High School Union Grove	Alan Mollerskov	Mary Blue	billed 9/4	2014fa-2015sp	TA-technical support	900-019-2M1E	TA	6,000.00	
2015-0094		Waterford High School Waterford	Keith Brandstetter	Mary Blue	billed 9/4	2014fa-2015sp	TA-technical support	900-019-2M18	TA	6,000.00	
2015-0095		Wheatland High School Wheatland	Marty McGinley	Mary Blue	billed 9/4	2014fa-2015sp	TA-technical support	900-019-2M19	TA	6,000.00	
2015-0096		Wilnot High School Wilnot	Dan Kopp	Mary Blue	billed 9/4	2014fa-2015sp	TA-technical support	900-019-2M1A	TA	6,000.00	
2015-0097		Williams Bay High School Williams Bay	Wayne R. Anderson	Mary Blue	billed 9/4	2014fa-2015sp	TA-technical support	900-019-2M1B	TA	6,000.00	
2015-0098		WI School For the Deaf Delavan	Connie Gartner	Mary Blue	billed 9/4	2014fa-2015sp	TA-technical support	900-019-2M1C	TA	2,000.00	

Contract Number	ATC	Company	Company Contact Person	Gateway Contact Person	Status	Dates	Course Name	Course Number	Instructor	Est. Cost
2015-0099		Kenosha County Job Center	K Rich Salisbury	Rick Lofy	billed 2/19/15	9/2-12/5/14	CNC Intro CNC Mach Op CNC Offsets Gauging Blueprint Rdg LEAN/Six Sigma Mfg Shop Safety Speaking Principles Applied Math	420-342-2lbk 420-343-2lbk 420-344-2lbk 420-345-2lbk 421-376-2lbk 623-146-2lbk 625-125-2lbk 801-302-2lbk 804-370-2lbk	R Lofy Lou Neil R Wall Petersen R Hanson T Quinn	22,852.80
2015-0100		Elkhorn High School Elkhorn	E Chris Trottier	Mary Blue	billed 12/22/14	9/2-12/11/14	ASL I	533-126-2ZBA	Mary Mair	4,166.70
2015-0101		Waterford High School Waterford	R Keith Brandstetter	Mary Blue	billed 12/22/14	9/2-12/11/14	Dev Psychology	809-188-2ZBA	Colleen Aird	1,657.68
2015-0102		Union Grove High School Union Grove	R Alan Mollerskov	Mary Blue	billed 12/22/14	9/2-12/11/14	Dev Psychology	809-188-3ZBB	Colleen Aird	2,072.10
2015-0103		Union Grove High School Union Grove	R Alan Mollerskov	Mary Blue	billed 12/22/14	9/2-12/11/14	Med Terminology	501-101-2EBA	R Formanek	4,558.62
2015-0104		Big Foot High School Lake Geneva	W Heidi McGraw	Mary Blue	billed 12/22/14	9/2-12/11/14	Med Terminology	501-101-2EBB	R Formanek	2,072.10
2015-0105		Williams Bay High School Williams Bay	W William White	Mary Blue	billed 12/22/14	9/2-12/11/14	ASL I	533-126-2ZBL	Mary Mair	1,111.12
2015-0106	May NO	Waterford High School Waterford	R Keith Brandstetter	Mary Blue	billed 12/22/14	9/2-12/11/14	ASL I	533-126-2ZBB	Mary Mair	6,666.72
2015-0107		Waterford High School Waterford	R Keith Brandstetter	Mary Blue	billed 12/22/14	9/2-12/11/14	Intro to Psychology	809-198-2ZBA	Colleen Aird	6,630.72
2015-0108		Waterford High School Waterford	R Keith Brandstetter	Mary Blue	billed 12/22/14	9/2-12/11/14	Intro to Psychology	809-198-2ZBB	Colleen Aird	5,801.88
2015-0109		Waterford High School Waterford	R Keith Brandstetter	Mary Blue	billed 12/22/14	9/2-12/11/14	Intro to Programming	152-126-2ZBA	Saad Yousuf	9,512.52
2015-0110		Williams Bay High School Williams Bay	W William White	Mary Blue	billed 12/22/14	9/2-12/11/14	ASL I	533-126-2ZBC	Mary Mair	833.34
2015-0111		Big Foot High School Cancelled			Canc.					
2015-0112		Burlington High School Burlington	R Mike Raether	Mary Blue	billed 12/22/14	9/2-12/11/14	Med Terminology	501-101-2EBC	R Formanek	2,900.94
2015-0113		Waterford High School Waterford	R Keith Brandstetter	Mary Blue	billed 12/22/14	9/2-12/11/14	Intro to Sociology	809-196-2ZBA	Colleen Aird	6,630.72
2015-0114		Union Grove High School Union Grove	R Alan Mollerskov	Mary Blue	billed 12/22/14	9/2-12/11/14	Intro to Sociology	809-196-2ZBB	Colleen Aird	1,243.26
2015-0115		Big Foot High School Lake Geneva	W Heidi McGraw	Mary Blue	billed 12/22/14	9/2-12/11/14	ASL I	533-126-2ZBE	Mary Mair	833.34
2015-0116		Elkhorn High School Elkhorn	W Chris Trottier	Mary Blue	billed 12/22/14	9/2-12/11/14	ASL I	533-126-2ZBF	Mary Mair	3,888.92

Contract Number	ATC	Company	Company Person	Company Contact Person	Gateway Contact Person	Status	Dates	Course Name	Course Number	Instructor	Est. Cost
2015-0117		Burlington High School Burlington	R Mike Raether	Mary Blue	billed 12/22/14	9/2-12/11/14	Chinese I	802-114-2ZBA	Xin Lin Hill	1,243.26	
2015-0118		Westosha Central High School Salem	K Gail Netzer-Jensen	Mary Blue	billed 12/22/14	9/2-12/11/14	Chinese I	802-114-2ZBB	Xin Lin Hill	414.42	
2015-0119		Elkhorn High School Elkhorn	W Chris Trottier	Mary Blue	billed 12/22/14	9/2-12/11/14	Chinese I	802-114-2ZBC	Xin Lin Hill	828.84	
2015-0120		Waterford High School Cancelled			billed 12/22/14					0.00	
2015-0121		Evansville High School Evansville	O Scott Everson	Mary Blue	billed 12/22/14	9/2-12/11/14	ASL I	533-126-2ZBG	Mary Mair	277.78	
2015-0122		Union Grove High School Union Grove	R Alan Mollerskov	Mary Blue	billed 12/22/14	9/2-12/11/14	ASL I	533-126-2ZBH	Mary Mair	1,111.12	
2015-0123		Burlington High School Burlington	R Mike Raether	Mary Blue	billed 12/22/14	9/2-12/11/14	ASL I	533-126-2ZBI	Mary Mair	2,500.02	
2015-0124		Westosha Central High School Salem	K Gail Netzer-Jensen	Mary Blue	billed 12/22/14	9/2-12/11/14	ASL I	533-126-2ZBJ	Mary Mair	1,388.90	
2015-0125		Elkhorn High School Elkhorn	W Chris Trottier	Mary Blue	billed 12/22/14	9/2-12/11/14	ASL I	533-156-2ZBK	Mary Mair	3,611.14	
2015-0126		Williams Bay High School Williams Bay	W William White	Mary Blue	billed 12/22/14	9/2-12/11/14	ASL I	533-156-2ZBM	Mary Mair	833.34	
2015-0127		Big Foot High School Lake Geneva	W Heidi McGraw	Mary Blue	billed 12/22/14	9/2-12/11/14	Intro to Programming	152-126-2KBA	A Pearson	5,595.60	
2015-0128		Union Grove High School Union Grove	R Alan Mollerskov	Mary Blue	billed 12/22/14	9/2-12/11/14	Intro to Programming	152-126-2KBB	A Pearson	2,979.80	
2015-0129		Burlington High School Burlington	R Mike Raether	Mary Blue	billed 12/22/14	9/2-12/11/14	Intro to Programming	152-126-2RBA	Ty Kinis	559.56	
2015-0130		Westosha Central High School Salem	K Gail Netzer-Jensen	Mary Blue	billed 12/22/14	9/2-12/11/14	Intro to Programming	152-126-2RBB	Ty Kinis	3,916.92	
2015-0131		Elkhorn High School Elkhorn	W Chris Trottier	Mary Blue	billed 12/22/14	9/2-12/11/14	ASL 3	533-128-2ZBA	Mary Mair	1,944.46	
2015-0132		Burlington High School Burlington	R Mike Raether	Mary Blue	billed 12/22/14	9/2-12/11/14	ASL 3	533-128-2ZBB	Mary Mair	555.56	
2015-0133		KUSD/LakeView Pleasant Prairie	K Mark Hinterberg	Mary Blue	billed 11/19/14	9/2-10/30/14	Comp Assist Prog Mech Skills CIM PLTW I Pneu/Hyd	628-111-2L1A 628-109-2L1A 628-123-2L1A 612-102-2L1A	J Nelson	19,951.45	
2015-0134		KUSD/LakeView Pleasant Prairie	K Mark Hinterberg	Mary Blue	billed 1/30/15	9/29-1/26/15	CIM PLTW II Mech Tech Pneu/Hyd Quality for AMST DCAC	628-124-2L1A 628-1019-2L1B 612-102-2L1C 628-125-2L1A 605-113-2L1A	J Nelson	34,605.26	
2015-0135		InSinkErator Racine	R Casey Doolan	Gary Leyer	Sent to billing 9/16/14	8/26/14- 8/27/14	HCP CPR Recertification	531-426a- 1zba,1zbb,1zbc	B. Riden L. Gurns	1,860.00	
2015-0136		MTI Global								10,388.00	
2015-0137											

Contract Number	ATC	Company	Company Person	Company Contact Person	Gateway Contact Person	Status	Dates	Course Name	Course Number	Instructor	Est. Cost
2015-0138		Walworth County Jail	W Kevin Brunner		Sharyn Palmer	Sent to billing 1/7/15	9/5/14-12/8/14	Math 200 ABE Lab Supervision	854-750-221j 890-721-221j 900-020-221j	S. Palmer	9,996.00
2015-0139		Elkhorn			John Dahms	Canc.	9/15/2014	Ext. Training	503-447-2zbx 503-447-2zby		0.00
2015-0143		Fair Oaks Farms Pleasant Prairie CANCELLED	K Todd Campbell		Dan Neuman	billed 10/3/14	7/16-8/11/14	TA	900-003-1M1A	D Neuman	2,480.00
2015-0144		Johnson Wax Racine	R Patrice Bishop								
2015-0146		FY14 Knapp WATG									
2015-0147		Kenosha Fire Department Kenosha	K Chief Poltrock		Terry Simmons	billed 11/24/14	11/4-11/18/14	EMS CE 8hr CE 4hr EMS	531-805-2kba,b,c 531-801-2kba,b,c	O'Connell V Hulback	2,170.20
2015-0148		KABA Kenosha	K Todd Battle		Richard Hanson	sent to billing 10-22-14	8/20/14-9/19/14	Fund. of Supv. 1	196-461-1zbx	R. Hanson	1,860.00
2015-0149		NC3 Kenosha	K Roger Tadjewski		Debbie Davidson	billed 1/7/15	9/1-12/31/14	TA Matt Janisin	900-019-2M1F 900-019-2M1G	M Janisin	4,850.00
2015-0150		RUSD Park High School Racine	R		Debbie Davidson	I	9/2014-6/2015	TA	602-104-221A 602-124-221A	J Kobriger	115,440.00
2015-0151		RUSD/Park High School Racine	R		Debbie Davidson	I	1/26-6/10/15	Electrical & Electronic Systems	602-127-3Z1A	J Kobriger	
2015-0152		Badger High School Lake Geneva	W Robert Kopydowski		transcripted	billed 4/1/15	2014 Fall	Sports/Ent Development Culinary Arts I ProStart Compete Culinary Arts Medical Terminology Auto 2 Auto 1 Auto 3 Electronics Digital Electronics	104-109T-2ZTB 145-119T-2ZTA,B 307-151T-2ZTA,B,C 316-131T-2ZTA 316-136T-2ZTA 316-170T-2ZTA 501-101T-2ZTA 602-104T-2ZTA,B 602-107T-2ZTA,B,C,D 602-107T-2ZTA 125T-2ZTA 605-113T-2ZTA,B 605-113T-2ZTB	V Kirk D Giovingo R Tronsen S Sherman T Sheeley J Popanda	134,087.33
2015-0153		School District of Beloit Beloit	O Alis Lohff		transcripted	billed 4/1/15	2014 Fall	Auto Svc Fund	602-107T-2ZTE,F	A Troxell	4,892.52
2015-0154		Burlington High School Burlington	R Mike Raether		transcripted	billed 2/10	2014 Fall	Personal Financial	114-101T-2ZTA,B,D	J Gribble	20,306.58
2015-0155		Delavan/Darien High School Delavan	W Cora Rund		transcripted	billed 2/10	2014 Fall	Physical Earth,AG Ph Earth AG Science	001-147T-2ZBA,B 001-148T-2ZTA	M Speth	4,234.20
2015-0156		East Troy High School East Troy	W Kimberly Penza		transcripted	billed 3/12/15	2014 Fall	Comp for Prof	103-143T-2ZTA	D Leising	3,105.08
2015-0157		Elkhorn High School Elkhorn	W Chris Trotter		transcripted	billed 4/1/15	2014 Fall	Acc Principles for Prof Marketing Princ Retailing Keyboarding App Pers Fin Planning Medical Terminology	101-114T-2ZTA 103-143T-2ZTB,C 104-101T-2ZTA,B 104-127T-2ZTA 106-137T-2ZTA,B 114-101T-2ZTC 501-101T-2ZTB	J Pella Bruegeman D Anderson L Anzalone S Steinke	62,068.83
2015-0158		KUSD/Harborside Academy Kenosha	K Kimberly Penza		transcripted	billed 4/1/15	2014 Fall	Intro to Dig Photo	204-107T-2ZTA,B	S Henkel	15,457.86



Contract Number	ATC	Company	Company Person	Company Contact Person	Gateway Contact Person	Status	Dates	Course Name	Course Number	Instructor	Est. Cost
2015-0159		KUSD/Indian Trails Academy Kenosha	K	Mark Hinterberg	transcripted	billed 4/1/15	2014 Fall	Intro to Business Entrepreneurship I Illustration Media Medical Terminology Intro to Healthcare	102-137T-2ZTF,G 145-119T-2ZTE 204-125T-2ZTA,B 501-101T-2ZTF 501-107T-2ZTA	H Paulson S Bleser T Metzler	39,162.86
2015-0160		KUSD/LakeView Technology Center Pleasant Prairie	K	Mark Hinterberg	transcripted	billed 2/10/15	2014 Fall	Intro to Networking Digital Concepts	150-150T-2ZTA,B 605-130T-2ZTA	H Townd Garringer	23,237.85
2015-0161		KUSD/Tremper High School Kenosha	K	Mark Hinterberg	transcripted	billed 4/1/15	2014 Fall	Fut Trends in EI AutoCad Mech	605-183T-2ZTA 606-141T-2ZTA,B	P Ackland	22,818.18
2015-0162		RUSD/Case High School Racine	R	Bradley Haag	transcripted	billed 3/16/15	2014 Fall	Intro to Business Business Law Retailing Keyboarding App Entrepreneurship	102-137T-2ZTA 102-160T-2ZTC 104-127T-2ZTC 106-137T-2ZTC 145-119T-2ZTC	Wartzenluft Gwen Clark	34,082.19
2015-0163		RUSD/Horlick High School Racine	R	Bradley Haag	transcripted	billed 3/16/15	2014 Fall	Intro to Business Retailing Keyboarding Apps	102-137T-2ZTB 104-127T-2ZTE 106-137T- 2ZTE,F,G,I	M Dawson McClanahan Jennifer Sus	29,681.07
2015-0164		RUSD/Park High School Racine	R	Bradley Haag	transcripted	billed 3/16/15	2014 Fall	Intro to Business Retailing Keyboarding Apps	102-137T- 2ZTC,D,E 104- 127T-2ZTD	A Greiner A Belker J Browarski	27,026.55
2015-0165		REAL High School	O	Jackie Brown	transcripted	billed 3/16/15	2014 Fall	Business Law Keyboarding	106-137T-2ZTH 102-160T-2ZTA 106-137T-2ZTI	L Schmidt	13,371.69
2015-0166	ay 14, 2015 73	Union Grove High School Union Grove	R	Alan Mollerskov	transcripted	billed 3/16/15	2014 Fall	Business Law Comps for Professionals Keyboarding Apps Entrepreneurship I Culinary Skills I Sanitation & Hyg	102-160T-2ZTB 103-143T-2ZTE,F 106-137T-2ZTJ,K 145-119T-2ZTD 316-131T-2ZTD 316-170T- 2ZTB,C,D	W Coury T Vandeboger t	52,144.83
2015-0167		Waterford High School Waterford	R	Keith Brandstetter	transcripted	billed 3/16/15	2014 Fall	Accounting Principles Dig Photography Illustration Media Culinary I Medical Terminology	101-114T-2ZTB 104-107T-2ZTC,D 204-125T-2ZTC 316-131T-2ZTC 501-101T-2ZTC	Jill Hanson L Durkowitz C Buelow J Tomm	46,077.16
2015-0168		School District of West Allis West Allis	O	Deb Glowacki	transcripted	billed 4/1/15	2014 Fall	Auto Svc Fund	602-107-2ZTG,H	Matt Kerhin	6,115.60
2015-0169		Westosha High School Salem	K	Gail Netzer-Jensen	transcripted	billed 4/1/15	2014 Fall	Comp for Prof Marketing Principles Sports & Events Mktg Princ IT Essentials of Interior Design ECE: Health, Safety, Nutr Culinary Skills I Medical Terminology Auto Svc Fund	103-143T-2ZTD 104-101T-2ZTC 104-109T-2ZTA 107-193T-2ZTA 304-155T-2ZTA 307-167T-2ZTA 316-131T-2ZTB 501-101T-2ZTD,E 602-107T-2ZTI,J	C Belan M Bahson G Pongratz D Laabs C Halladay Menebroekr	60,426.62
2015-0170		Whitewater High School Whitewater	W	Doug Parker	transcripted	billed 4/1/15	2014 Fall	Auto Svc Fund	602-107T-2ZTI,J	Mike Wintz	9,173.40
2015-0171		Wilnot High School Wilnot	K	Joel Adamczyk	transcripted	billed 4/1/15	2014 Fall	Comps for Prof Marketing Principles Retailing ECE:Practicum I Auto Service Fund	103-143T-2ZTG,H 104-101T-2ZTD,E 104-127T-2ZTF,B 307-147T-2ZTA 602-107T-2ZTK,L	J Erbenraut S Younger C Kothe D Cooper Oehmichen J Kehoe	47,686.38

Contract Number	ATC	Company	Company Person	Company Contact Person	Gateway Contact Person	Status	Dates	Course Name	Course Number	Instructor	Est. Cost
2015-0172		Gateway Technical College Foundation, Inc.	K Jennifer Charpentier	K Robin Hoke	Robbin Hoke	billed 11/11/14	2014 Fall	Certified Logistics Assist Certified Logistics Tech Forklift Training	625-407-2IBA 625-408-2IBA 443-412-2HBA,B	J Noelle C Sorget V Hinke	9,900.00
2015-0173		KUSD/Reuther High School Racine	R Mark Hinterberg	R Mark Hinterberg	Julie Capelli	billed 1/30/15	11/3-1/22/15	ECE Health	307-167-2ZBA	M Munroe	4,973.04
2015-0175		Milw Electrical JATC INEW 494 Wauwatosa	O Kyle Krueger	O Kyle Krueger	Randy Reusser	Sent to billing 12-12	11/12/14-12/10/14	Belden 726 Copper Belden 746 Fiber	150-406-2CB2 150-406-2CB2	R. Reusser	4,190.00
2015-0176		Milw Electrical JATC INEW 494 Wauwatosa	O Kyle Krueger	O Kyle Krueger	Randy Reusser	sent to billing 3-16-18	1/7/15-3/18/15	BICSI IN225 Copper	150-412-3CB2	R. Reusser	11,174.00
2015-0177		Dejno's Inc. Kenosha	K Joel Swift	K Joel Swift	Randy Reusser	sent to billing 12-2-14	10/7/14-10/9/14	Basic Electricity Basic Elec. Tool Sfty	605-429c-2CBD 605-450-2CBD	R. Reusser	978.00
2015-0178		Honeywell Pleasant Prairie	K Tom Anderson	K Tom Anderson	Dan Neuman	Sent to billing 3/25/15	7/1/14 - 9/11/14	Precision Measuring Mech Power Trans	623-405A-1BZA, B, C 462-480-1ZBA, B, C	D. Neuman	14,715.00
2015-0179		R&B Grinding WATG 174 Racine	R Barbara Lange	R Barbara Lange	Richard Hanson	FA14 Sent to billing 3/17/15	9/17/14-10/1/14	Understand ISO IGA Machine Repair Root Cause Analysis Train the Trainer	623-448-2ZBR 623-471-2ZBR	R. Hanson	16,928.00
2015-0180		KABA Kenosha	K Todd Battle	K Todd Battle	Richard Hanson	Sent to billing 12-2-13	9/26/14-10/31/14	Fund. of Supv. 2	196-465-2ZBY	R. Hanson	1,860.00
2015-0181		RCEDC Sturtevant	R Jenny Trick	R Jenny Trick	Richard Hanson	Canc. By L. Howard	9/19/14-12/18/14	Fund. of Supv. 1	196-835-2zba	R. Hanson	0.00
2015-0182		KABA Kenosha	K Todd Battle	K Todd Battle	Richard Hanson	Sent to billing 12-11-14	11/7/14-12/17/14	Fund. of Supv. 3	196-460-2ZBA	R. Hanson	1,860.00
2015-0183		Synerject WATG 140 Delavan	K Kim Turigiallito	K Kim Turigiallito	Rick Lofy	FA14 sent to billing 2/19/15	9/23/14-TBD	Zero Defects Problem Solving Constr. Feedback	623-818-2zba	R. Lofy	9,990.00
2015-0191		KUSD/Tremper High School Kenosha	K Mark Hinterberg	K Mark Hinterberg	Julie Capelli	I	3/30-5/26/15	Medical Terminology	501-101-3Z1A	J Capelli	7,045.14
2015-0192		Whitewater High School Whitewater	W Doug Parker	W Doug Parker	Jo Hart	I	1/26-5/1/15	Nursing Assistant	543-300-3ZBA	Jo Hart	4,391.70
2015-0193		Big Foot High School Walworth	W Heidi McGraw	W Heidi McGraw	Jo Hart	I	1/26-4/29/15	Nursing Assistant	543-300-3ZBB	Jo Hart	4,391.70
2015-0194		KUSD/Tremper High School Kenosha	K Mark Hinterberg	K Mark Hinterberg	Julie Capelli	billed 4/1/15	1/26-3/24/15	Nursing Assistant	543-300-3Z1A	J Capelli	5,709.21
2015-0195		KUSD/Indian Trail Academy Kenosha	K Mark Hinterberg	K Mark Hinterberg	Julie Capelli	billed 4/1/15	1/26-3/26/15	Nursing Assistant	543-300-3Z1B	J Capelli	3,513.36
2015-0196		KUSD/Indian Trail Academy Kenosha	K Mark Hinterberg	K Mark Hinterberg	Julie Capelli	I	3/30-5/14/15	Nursing Assistant	543-300-3Z1C	J Capelli	7,465.89
2015-0197		Burlington High School Burlington	R Mike Raether	R Mike Raether	Jo Hart	I	1/26-5/1/15	Nursing Assistant	543-300-3BBA	Jo Hart	4,391.70
2015-0198		Waterford High School Waterford	R Keith Brandstetter	R Keith Brandstetter	Jo Hart	I	1/26-5/1/15	Nursing Assistant	543-300-3BBB	Jo Hart	4,391.70
2015-0199		Waterford High School Waterford	R Keith Brandstetter	R Keith Brandstetter	Jo Hart	I	1/27-4/30/15	Nursing Assistant	543-300-3BB2	Jo Hart	4,391.70
2015-0200		Burlington High School Burlington	R Mike Raether	R Mike Raether	Jo Hart	I	1/27-4/30/15	Nursing Assistant	543-300-3BB1	J Hart	4,391.70
2015-0201		Westosha High School Salem	K Gail Netzer-Jensen	K Gail Netzer-Jensen	Jo Hart	I	1/27-4/30/15	Nursing Assistant	543-300-3bb3	Jo Hart	4,391.70

Contract Number	ATC	Company	Company Person	Gateway Contact Person	Status	Dates	Course Name	Course Number	Instructor	Est. Cost
2015-0202		East Troy High School	W Kimberly Penza	Jo Hart	I	1/27-4/30/15	Nursing Assistant	543-300-3BB4	Jo Hart	4,391.70
2015-0203		East Troy High School	W Robert Kopydowski	Jo Hart	I	1/26-4/29/15	Nursing Assistant	543-300-3ZBC	Jo Hart	4,391.70
2015-0204		Badger High School Lake Geneva	R Joel Adamczyk	Jo Hart	I	1/26-4/29/15	Nursing Assistant	543-300-3ZBD	Jo Hart	4,391.70
2015-0205		Wilmut High School Wilmut	W Chris Trottier	Jo Hart	I	1/12-4/27/15	Nursing Assistant	543-300-3EB1	Jo Hart	4,391.70
2015-0206		Elkhorn High School Elkhorn	W Cora Rund	Jo Hart	I	1/12-4/27/15	Nursing Assistant	543-300-3EB2	Jo Hart	4,391.70
2015-0207		Delavan/Darien High School Delavan	W Liz Helle	Lauri Howard	Sent to billing 2-16-15	9/4/14-tbd	Lean Six Sigma BB Lean Operations	623-817-2zbp 623-812-2ZBP	R. Lofy	16,687.00
2015-0208		Protect-All WATG 145 Darien	K Jeanne Leafblad	Kim Sanderson	Sent to billing 4/6/15	2/17/15- 3/17/15	Excel 1 PowerPoint1	103-417A-3ZBH 103-420H-3ZBH	K. Sanderson	3,375.00
2015-0209		Honeywell Cable Pleasant Prairie	K Jeanne Leafblad	Kim Sanderson	Sent to billing 3/16/15	11/14/14- 12/12/14	Word 1	103-476g-2ZBH	K. Sanderson	1,650.00
2015-0210		Honeywell Cable Pleasant Prairie	R John Thielen	Robin Hoke	Sent to billing 12-11-14	10/17/14- 10/24/14	Forklift Recertification	462-401a-2RBX	V. Hinke	188.00
2015-0211		Gateway Technical College Facilities - Racine	Jennifer Charpentier	Julie Capelli	billed 4/14/15	2/2-3/26/15	Nursing Assistant Boot Camp 4	543-300-3R1C	J Capelli	4,830.87
2015-0212		Gateway Foundation Inc. Kenosha	K Jack Rose	Molly Meagher	Sent to billing 11-12-14	9/15/14 - 9/19/14	Tech Assistance - CIT Training	900-019-2KF2	J. Rose	1,296.20
2015-0213		NAMI - Kenosha County Kenosha	K Jack Rose	Molly Meagher	Sent to billing 12-16-14	11/12/14- 11/13/14	Technical Assistance CIP Training	900-019-2K1A		2,237.58
2015-0214		NAMI Kenosha	R Ambra Caruthers	Can Neuman	billed 12/16/14	9/9-11/7/14	TA Dan Neuman APT Program	900-019-2M1D	D Neuman	1,860.00
2015-0215		Johnson Wax Racine	K Kim Sanderson	Kendra Martinellei	Sent to billing 3/25/15	11/14/14- 12/02/14	Excel 1	103-417c- 2CBM,2CBN	K. Sanderson	2,990.00
2015-0216		Compass Minerals Kenosha								
2015-0217		part of 2015-0175								
2015-0218		KUSD/Indian Trail Academy Kenosha	Marsha Nelson	John Dahms	I	1/27-5/5/15	Prin of Em Services	503-139-3ZBA	Radandt	6,806.72
2015-0219		Forest County Gaming - Multi Recip Milwaukee	O John Wallner	Randy Reusser	Sent to billing 12/17/15	12/1/14- 12/6/14	BICSI IN250 Technical Assistance	150-410-2CBF 900-019-2M1p	R. Reusser	5,658.00
2015-0220		AVS - Multi Recip Black Creek	O Rick Verbsky	Randy Reusser	Sent to billing 12/17/15	12/1/14- 12/6/14	BICSI IN250 Technical Assistance	150-410-2CBG 900-019-2M1p	R. Reusser	629.00
2015-0221		Palmer Hamilton Elkhorn	Linda Youngblood	Lauri Howard	billed 2/16/15	10/1- 12/31/14	TA-Liz Oplatka	900-019-2M1K	L Oplatka	6,896.64

Contract Number	ATC	Company	Company Person	Company Contact Person	Gateway Contact Person	Status	Dates	Course Name	Course Number	Instructor	Est. Cost
2015-0244		Gateway Technical College Foundation Inc (CNC Boot Camp XXI)	K	Jennifer Charpentier	Rick Lofy	I	1/5-4/10/15	CNC Intro CNC Mach Op CNC Offsets Gauging Blueprint Rdg LEAN/Six Sigma Mfg Shop Safety Speaking Principles Applied Math	420-342-3iba 420-343-3iba 420-344-3iba 420-345-3iba 421-376-3iba 623-146-3iba 625-125-3iba 801-302-3iba 804-370-3iba	R Reusser R Wall N Petersen R Hanson T Quinn R Lofy L Neil	47,200.00
2015-0245		Kenosha County Job Center Kenosha	K	Janine Frechette	Beth Tilley	inv 12-17	7/7/14-8/8/14	CDL Training	900-003-1m1f	Eagle	3,750.00
2015-0246		DVR Racine	R	Ira Mitchell-Zachary	Beth Tilley	inv 12-17	9/15/14- 10/17/14	CDL Training	900-003-2M1W	Eagle	3,750.00
2015-0247		RCWDC Racine	R	Ashanti Ross	Beth Tilley	inv 12-17	10/20/14- 11/21/14	CDL Training	900-003-2M1C	Eagle	3,750.00
2015-0248		Walworth County Job Center Elkhorn	W	Jonathan Watts	Beth Tilley	inv 12-17	10/20/14- 11/21/14	CDL Training	900-003-2M1H	Eagle	3,750.00
2015-0249		Kenosha County Job Center Kenosha	K	Rich Salisbury	Beth Tilley	inv 12-17	9/15/14- 10/17/14	CDL Training	900-003-2M1K	Eagle	7,500.00
2015-0250		RCWDC Racine	R	Ashanti Ross	Beth Tilley	inv 12-17	8/11/14- 9/12/14	CDL Training	900-003-1M1R	Eagle	3,750.00
2015-0251		DVR Racine	R	Sharon White	Beth Tilley	inv 12-17	7/7/14-8/8/14	CDL Training	900-003-1M1V	Eagle	3,750.00
2015-0252		Kenosha County Job Center Kenosha	K	Rich Salisbury	Beth Tilley	inv 12-17	7/7/14- 9/12/14	CDL Training	900-003-1M1F	Eagle	22,500.00
2015-0253		DVR Racine	R	Sharon White	Beth Tilley	inv 12-17	8/11/14- 9/12/14	CDL Training	900-003-1M1W	Eagle	3,750.00
2015-0254		SCJ Grant Sturtevant	R	Robin Hoke	Beth Tilley	inv 12-17	10/20/14- 11/21/14	CDL Training	900-003-2M1J	Eagle	3,150.00
2015-0255		RCWDC Racine	R	Alonzo Payne	Beth Tilley	inv 12-17	8/11/14- 9/12/14	CDL Training	900-003-1M1Y	Eagle	3,750.00
2015-0256		Kenosha County Job Center	K	Doug Bartz	Rick Lofy	I	1/5-4/10/15	CNC Intro CNC Mach Op CNC Offsets Gauging Blueprint Rdg LEAN/Six Sigma Mfg Shop Safety Speaking Principles Applied Math	420-342-3ibak 420-343-3ibak 420-344-3ibak 420-345-3ibak 421-376-3ibak 623-146-3ibak 625-125-3ibak 801-302-3ibak 804-370-3ibak	R Reusser R Wall N Petersen R Hanson T Quinn R Lofy L Neil	8,850.00
2015-0261		Elkhorn High School Elkhorn	W	Chris Trottier	Mary Blue	I	1/12-5/2/15	ASL 2	533-127-3ZBA	M Mair	6,666.72
2015-0262		Waterford High School Waterford		Keith Brandstetter	Mary Blue	I	1/12-5/2/15	Dev Psychology	809-188-3ZBA	C Aird	9,946.08
2015-0263		Union Grove High School Union Grove	R	Alan Mollerskov	Mary Blue	I	1/12-5/2/15	Dev Psychology	809-188-3ZBB	C Aird	9,946.08
2015-0264		Union Grove High School Union Grove	R	Alan Mollerskov	Mary Blue	I	1/12-5/2/15	Med Terminology	501-101-3EBA	Formanek	9,946.08
2015-0265		Union Grove High School Union Grove	R	Alan Mollerskov	Mary Blue	I	1/12-5/2/15	Med Terminology	501-101-3EBC	Formanek	9,946.08

Contract Number	ATC	Company	Company Contact Person	Gateway Contact Person	Status	Dates	Course Name	Course Number	Instructor	Est. Cost
2015-0266		Williams Bay High School Williams Bay	William White	Mary Blue	I	1/12-5/2/15	ASL 2	533-127-3ZBB	M Mair	6,666.72
2015-0267		Waterford High School Waterford	Keith Brandstetter	Mary Blue	I	1/12-5/2/15	ASL 2	533-127-3ZBC	M Mair	6,666.72
2015-0268		Big Foot High School Walworth	Heidi McGraw	Mary Blue	I	1/12-5/2/15	ASL 2	533-127-3ZBM	M Mair	6,666.72
2015-0269		Waterford High School Waterford	Keith Brandstetter	Mary Blue	I	1/12-5/2/15	Intro to Psychology	809-198-3ZBA	C Aird	9,946.08
2015-0270		Waterford High School Waterford	Keith Brandstetter	Mary Blue	I	1/12-5/2/15	Intro to Psychology	809-198-3ZBB	C Aird	9,946.08
2015-0271		Waterford High School Waterford	Keith Brandstetter	Mary Blue	I	1/12-5/2/15	Game Programming I	152-157-3KBA	C Hur	10,072.08
2015-0272		Evansville High School Evansville	Scott Everson	Mary Blue	I	1/12-5/2/15	Game Programming I	152-157-3KBB	C Hur	10,072.08
2015-0273		Williams Bay High School Williams Bay	William White	Mary Blue	I	1/12-5/2/15	ASL 2	533-127-3ZBD	M Mair	6,666.72
2015-0274		Waterford High School Waterford	Keith Brandstetter	Mary Blue	I	1/12-5/2/15	Intro to Sociology	809-196-3ZBA	C Aird	9,946.08
2015-0275	R	Union Grove High School Union Grove	Alan Mollerskov	Mary Blue	I	1/12-5/2/15	Intro to Sociology	809-196-3ZBB	C Aird	9,946.08
2015-0276	W	Elkhorn High School Elkhorn	Chris Trottier	Mary Blue	I	1/12-5/2/15	ASL 2	533-127-3ZBF	M Mair	6,666.72
2015-0277	R	Burlington High School Burlington	Mike Raether	Mary Blue	I	1/12-5/2/15	Chinese 2	802-115-3ZBA	X Hill	9,946.08
2015-0278	K	Central High School Salem	Gail Netzer-Jensen	Mary Blue	I	1/12-5/2/15	Chinese 2	802-115-3ZBB	X Hill	9,946.08
2015-0279	W	Elkhorn High School Elkhorn	Chris Trottier	Mary Blue	I	1/12-5/2/15	Chinese 2	802-115-3ZBC	X Hill	9,946.08
2015-0280		Evansville High School Evansville	Scott Everson	Mary Blue	I	1/12-5/2/15	ASL 2	533-127-3ZBG	M Mair	6,666.72
2015-0281	R	Union Grove High School Union Grove	Alan Mollerskov	Mary Blue	I	1/12-5/2/15	ASL 2	533-127-3ZBH	M Mair	6,666.72
2015-0282	R	Burlington High School Burlington	Mike Raether	Mary Blue	I	1/12-5/2/15	ASL 2	533-127-3ZBI	M Mair	6,666.72
2015-0283	K	Central High School Salem	Gail Netzer-Jensen	Mary Blue	I	1/12-5/2/15	ASL 2	533-127-3ZBJ	M Mair	6,666.72
2015-0284	W	Elkhorn High School Elkhorn	Chris Trottier	Mary Blue	I	1/12-5/2/15	ASL 2	533-127-3ZBK	M Mair	6,666.72
2015-0285		Williams Bay High School Williams Bay	William White	Mary Blue	I	1/12-5/2/15	ASL 2	533-127-3ZBL	M Mair	6,666.72
2015-0286		Big Foot High School Walworth	Heidi McGraw	Mary Blue	I	1/12-5/2/15	Microcomputer Prog	152-151-3KBA	A Pearson	10,072.08
2015-0287	R	Union Grove High School Union Grove	Alan Mollerskov	Mary Blue	I	1/12-5/2/15	Microcomputer Prog	152-151-3KBB	A Pearson	10,072.08
2015-0288	R	Burlington High School Burlington	Mike Raether	Mary Blue	I	1/12-5/2/15	Microcomputer Prog	152-151-3KBC	A Pearson	10,072.08
2015-0289	K	Central High School Salem	Gail Netzer-Jensen	Mary Blue	I	1/12-5/2/15	Microcomputer Prog	152-151-3KBD	A Pearson	10,072.08
2015-0290	W	Elkhorn High School Elkhorn	Chris Trottier	Mary Blue	I	1/12-5/2/15	ASL 4	533-129-3ZBA	M Mair	6,666.72

Contract Number	ATC	Company	Company Person	Gateway Contact Person	Status	Dates	Course Name	Course Number	Instructor	Est. Cost
2015-0291		Burlington High School Burlington	R Mike Raether	Mary Blue	I	1/12-5/2/15	ASL 4	533-129-3ZBB	M Mair	6,666.72
2015-0296		Insinkerator Racine	R Lynn Olesen	Richard Hanson	I	Spring 2015	TA Training Center	900-003-3M1A	R Hanson Sanderson	41,850.00
2015-0297		NC3 Kenosha	Roger Tadjewski	Debbie Davidson	sent 4/14/15	1/1-3/31/15	TA-Matt Janisin	900-019-3M1A 900-019-3M1B	M Janisin	10,175.00
2015-0298		KABA Kenosha	Todd Battle	Richard Hanson	Sent to billing 2/18/15	1/7/15- 2/11/15	Fund. of Supv. 1	196-461-3zbk	R. Hanson	1,860.00
2015-0299		KUSD/Indian Trails Academy Kenosha	Marsha Nelson	Jane Finkenbine	I	1/26-5/14/15	Intro Criminal Justice	504-900-3Z1A	F iovine	9,946.08
2015-0300		Kenosha County Kenosha	Diane Leiting	Liz Oplatka	Sent to billing 2/5/15	12/15/14- 12/16/14	Performance Communication	196-2ZBW, 2ZBX,2ZBY, 2ZBZ	L. Oplatka	1,293.36
2015-0301		Brunk Industries WATG 171 Lake Geneva	Nancy Finlay	Lauri Howard	FA14 sent to billing 3/17/15	10/15/14- TBD	Supervision Exec. Leadership Adv. Excel	196-407-2zba,2zbb 900-019-2m1U		23,064.00
2015-0303		Honeywell Cable Pleasant Prairie	Tom Anderson	Dan Neuman	Sent to billing 3/25/15	10/16/14- 11/20/14	Intro to Hydral/Pnue	612-408- 2zba,2zbb,2zb1	D. Neuman	10,075.00
2015-0305		Walworth County Jail Elkhorn	Stephen Sax	Lauri Howard	Sent to BO 4/29/15	1/12/15- 5/1/15	Math 200 ABE Lab Supv.	854-750-3Z1J 890-721-3Z1J 900-020-3Z1J	S. Palmer	9,996.00
2015-0307		KUSD/Horizon Center Kenosha	Marsha Nelson	Jane Finkenbine	I	1/26-5/21/15	Brake Systems Auto Service Fund Auto IT for Transp	602-104-3H1C 602-107-3H1C 602-122-3H1C	W. Fell	14,370.22
2015-0310		Rust-Oleum WATG 142 Kenosha	Christopher Monroe	Lauri Howard	FA14 to inv 2/25/15	11/3/15-TBD	5S Intro to Hydraulics Mech Power Trans	623-483-2... 612-409-3... 462-491-2...	D. Neuman R. Lofy	65,607.00
2015-0315		Forest County Potawatomi Milwaukee	Tony Balistreri	Randy Reusser		2/23/15- 2/28/15	BICSI TE350	150-417a-3ZBF 150-417b-3ZBG	R. Reusser	6,535.84
2015-0316		Kenosha Fire Department	Jim Poltrock	Gary Leyer	I	4/15-4/29/15	EMS CE 8hr CE 4hr	531-487-3zba,b,c 531-488-3zba,b,c	Oconnell	1,509.60
2015-0318		Badger High School Lake Geneva	Robert Kopydlowski	Jane Finkenbine	I	1/12/15- 6/3/15	Various	Various	various	63,976.60
2015-0319		School District of Beloit Beloit	Arlis Lohff	Jane Finkenbine	I	1/12/15- 6/3/15	Auto Service Fund	602-107T-3zta	A Troxell	3,057.80
2015-0320		Burlington High School Burlington	Mike Raether	Jane Finkenbine	I	1/12/15- 6/3/15	Comp for Prof Principles Essentials Fin Plan Entrepreneurship	103-143t-3zta 104-101t-3zta 107-193t-3zta 114-101t-3zta,b 148-105t-3zta	various	25,112.70
2015-0321		Delavan/Darien High School Delavan	Cora Rund	Jane Finkenbine	I	1/12/15- 6/3/15	Greenhouse Landscape Urban Farm	001-151t-3zta 001-140t-3zta 001-109t-3zta	various	13,175.10
2015-0322		Elkhorn High School Elkhorn	Chris Trottier	Jane Finkenbine	I	1/12/15- 6/3/15	Mkt Principles Keyboarding Entrepreneurship Med Term	104-101t-3zta,b,c 103-137t-3zta 145-105t-3zta 501-101t-3zta		20,773.50

Contract Number	ATC	Company	Company Person	Gateway Contact Person	Status	Dates	Course Name	Course Number	Instructor	Est. Cost
2015-0323		KUSD/Indian Trails Academy Kenosha	K Marsha Nelson	Jane Finkenbine	I	1/12/15-6/3/15	Entrepreneurship Healthcare Med Term	145-119t-3ztb,c 501-107t-3ztb 501-101t-3ztd 501-104t-3zta 307-148t-3ztv		22,132.40
2015-0324		KUSD/LakeView Pleasant Prairie	K Marsha Nelson	Jane Finkenbine	I	1/12/15-6/3/15	Digital Electronics	605-130t-3zta		5,25.60
2015-0325		RUSD/Case High School Racine	R Bradley Haag	Jane Finkenbine	I	1/12/15-6/3/15	Mkt Principles Keyboarding Intro to Business	104-101t-3ztf 106-137t-3ztb,c,f 102-137t-3ztb		20,878.50
2015-0326		RUSD/Horlick High School Racine	R Bradley Haag	Jane Finkenbine	I	1/12/15-6/3/15	Intro to Business Business Law Keyboarding Entrepreneurship	102-137t-3ztc,d,e 102-160t-3zta 106-137t-3ztd 145-119t-3ztd,e		29,061.90
2015-0327		RUSD/Park High School Racine	R Bradley Haag	Jane Finkenbine	I	1/12/15-6/3/15	Mkt Principles Keyboarding	104-101t-3ztg 106-137t-3ztg,h		12,537.60
2015-0328		Union Grove High School Union Grove	R Alan Mollerskov	Jane Finkenbine	I	1/12/15-6/3/15	Comp for Prof Entrepreneurship Sanitation Hygiene	103-143t-3ztb 145-119t-3zta 316-170t-3zta,b,c		12,522.60
2015-0329		Waterford High School Waterford	R Keith Brandstetter	Jane Finkenbine	I	1/12/15-6/3/15	Med Term Intro to Business Digital Photo	501-101t-3ztc 102-137t-3zta 204-107t-3zta		12,972.60
2015-0330	May 14, 2015 79	Westosha Central High School Salem	K Gail Netzer-Jensen	Jane Finkenbine	I	1/12/15-6/3/15	Competition I Foundation Hlth,Safety,Nutrition Med Term Principles Essentials	316-136t-3zta 307-148t-3ztd 307-167t-3zta 501-101t-3zte 104-101t-3zth 107-193t-3ztc		22,822.40
2015-0331		Wilmut High School Wilmut	K Joel Adamczyk	Jane Finkenbine	I	1/12/15-6/3/15	Comp for Profession Child Dev Tech	103-143t-3ztc 307-148t-3ztc 602-125t-3zta		11,066.20
2015-0345		East Troy High School East Troy	W Jeff Crandall	Jane Finkenbine	I	1/12/15-6/3/15	Comp for Profession	103-143t-3ztd		1,411.40
2015-0346		Waterford High School Waterford	R Keith Brandstetter	Jane Finkenbine	I	3/5-5/21/15	Pre-technical writing	851-760-31a	T Gadbury	3,240.00
2015-0347		WCEDA Elkhorn	W Derek D'Auria	Richard Hanson	Sent to billing 3/16/15	2/9/15-3/16/15	Fund. of Supv. 3	196-460-3ZBW	R. Hanson	1,860.00
2015-0349		KABA Kenosha	K Lisa Feltson	Richard Hanson	Sent to billing 3/24/15	2/18/15-3/28/15	Fund. Of Supv. 2	196-465-3zbb	R. Hanson	1,860.00
2015-0350		Warren Ind. Racine	R Michael Kirchner	Lauri Howard	Sent to billing 4/6/15	2/6/15-5/8/15	Lean Operations	623-812-3ZBR	R. Lofy	10,829.00
2015-0352		Insinkerator Racine	R Jessica Tiefenthaler	Richard Hanson	I	Sp 15	Crises and books	103-102-3zba,b		0.00
2015-0353		First Call Heating & Cooling Racine	R Julie Venn	Kim Sanderson	Sent to billing 4/7/15	2/13/15-5/8/15	Excel Beginning	103-432D-3ZBF	K. Sanderson	1,593.13
2015-0354		part of 2015-0183 Synerject								
2015-0355		SCJ Racine	R Ambra Caruthers	Lauri Howard	Sent to billing 2/25/15	1/29/2015	Intro to Hand Tools	462-489-3ZBJ	D. Neuman	620.00

Contract Number	ATC	Company	Company Contact Person	Gateway Contact Person	Status	Dates	Course Name	Course Number	Instructor	Est. Cost
2015-0357		KABA Kenosha	Lisa Feltson	Richard Hanson	Sent to billing 4/9/15	4/1/15-4/29/15	Fund. Supv 3	196-460-3ZBK	R. Hanson	1,860.00
2015-0358		Arvato Digital Services	Heidi George	Kim Sanderson	Sent to billing 4/6/15	2/24/15-3/25/15	Excel Beginning Excel Intermed. Excel Adv.	103-417C-3ZBS 103-432C-3ZBS 103-466-3ZBS,T	K. Sanderson	7,038.00
2015-0360		Miniature Precision Components	Dean Mieske	Lauri Howard	I	3/19/15-TBD	Cont. Improvement Supervision Leadership Dev.	623-194-3ZBM	R. Hanson	16,479.00
2015-0361		WATG 194 Walworth								
2015-0362		part of 2015-0210								
2015-0364		Gateway Technical College Facilities - Racine	John Thielen	Lynn Hinke	Sent to billing 2/25/15	2/16/2015	Forklift Recertification	462-401B-3RB2	V. Hinke	94.00
2015-0367		Racine Correctional Inst. Sturtevant	Paula Crandall	Debbie Davidson	I	2/23/15-6/4/15	Fund. Of Safety & Print Reading Fund. Machine App. CNC Mach. Tech	444-337-3ZBX 444-338-3ZBX 444-331-1ZBX	K. Fulsom	41,649.00
2015-0368		SC Johnson Wax Racine	Ambra Caruthers	Dan Neuman	Sent to billing 3-24-15	3/4/2015	Intro. To Hand Tools	462-489-3ZBW	D. Neuman	620.00
2015-0369		Ocean Spray Kenosha	Mona Moncher	Dan Neuman	Sent to billing 3/12/15	10/21/14-10/28/14	Technical Assistance - Assessments	900-019-2M1N	D. Neuman	1,240.00
2015-0370		Ocean Spray Kenosha	Mona Moncher	Dan Neuman	Sent to billing 3/12/15	11/11/2014	Technical Assistance - Assessments	900-019-2M1R	D. Neuman	930.00
2015-0371	May 14 8, 2015	Ocean Spray Kenosha	Mona Moncher	Dan Neuman	Sent to billing 3/12/15	12/9/14-12/16/14	Technical Assistance - Assessments	900-019-2M1T	D. Neuman	2,480.00
2015-0372		Insinkerator Racine	Jessica Tiefenthaler	Richard Hanson	billed 3/12/15	1/1-3/6/15	Technical Assistance Lathe Safety and Refresher	900-019-3M1T	D Neuman	8,379.00
2015-0373		NC3 Kenosha	Roger Tadjewski	Matt Janisin	billed 3/12/15	1/15-1/19/15	TA-training at West- Mec	900-003-3M1Y	L Hobbs	2,250.00
2015-0375		Brunk Industries Lake Geneva	Mike Black	Lauri Howard	I	2/6/15-6/30/15	DISC TA- DISC Debrief TA-Coaching	196-828-3ZBN 900-019-3M1L 900-019-3m1n	L. Oplarka	46,649.00
2015-0376				Robin Hoke	Sent to billing 3-24-15	3/9/15-3/10/15	Forklift Training	462-401d-3CDM	V. Hinke	600.00
2015-0377	I	Rescare Kenosha	Steve Reinhold							
2015-0378		TA 2015-0178								
2015-0379		Kenall Manufacturing Kenosha	Waylon Gross	Debbie Davidson	I	3/10/15-5/31/15	Intro. to Assembly	605-455-3ZBA	J. Sammons	18,538.00
2015-0380										
2015-0381		Honeywell Pleasant Prairie	Tom Anderson	Dan Neuman	Sent to billing 4-8-15	1/8/15-2/5/15	Pumps	462-475-3zba,3zbb,3zb1	D. Neuman	6,510.00
2015-0382		Moriane Park Tech College Fond Du Lac	Kathy Schlieve	Dan Neuman	I	1/16/15-3/6/15	Technical Assistance	900-019-3m1Z	D. Neuman	13,261.00
2015-0384		NC3	Roger Tadjewski	Matt Janisin	I	3/31-6/30/15	TA Matt Janisin	900-019-3M1U,V,W	M Janisin	10,325.00



Contract Number	ATC	Company	Company Person	Gateway Contact Person	Status	Dates	Course Name	Course Number	Instructor	Est. Cost
2015-0385		EMCO	Dale Tebbe	Lauri Howard	I	5/4/15-7/18/15	Supervision Skills	196-889-3ZBE 196-889-3ZBF 196-490A-1ZBE	Malcolm Frasier	12,780.00
2016-0021		Pleasant Prairie								
2015-0387		KUSD/LakeView Pleasant Prairie	Marsha Nelson		I	3/30-6/11/15	Mech Skills CAM Prog	CNC 628-109-3L1B 628-110-3L1B	J Nelson	25,448.16
2015-0389		LMI Packaging Pleasant Prairie	Hank Weil	John Dahms	I	12/8/2014	Basic Fire Ext.	503-449-2ZBP,2ZBQ	B. Pagliaroni	620.00
2015-0391		BRP WATG 198 Sturtevant	Tara Coppage	Lauri Howard	I	2/17/15-8/31/15	Leadership	196-490B-3ZBW, 3ZBX, 3ZBY, 3ZBZ	L. Oplatka	31,088.00
2015-0392		Johnson Wax Racine	Ambra Caruthers	Kim Sanderson	I	4/15/15-4/22/15	Project Beginning	103-404B-3IBA	K Sanderson	1,600.00
2015-0397	I	RCEDC Sturtevant	Jenny Trick	Liz Oplatka	I	4/19/15-6/29/15	Leadership Dev Perf. Management Coaching TA: Perf. Appraisal	196-464-3ZBR 196-490C-3ZBR 900-019-3M1R 900-019-3M1Q	L. Oplatka	4,800.00
2015-0399		Kenosha County Public Works Kenosha	Robert Riedel	Liz Oplatka	I	5/4/15-7/6/15	Technical Assistance: Performance Appr.	900-019-3M1H	L. Oplatka	1,800.00
2016-0002	Ma	RUSD Racine	Bradley Haag	Julie Capelli	I	6/15-7/30/15	Nursing Assistant	543-300-1rba&b	J Capelli	16,116.80
2016-0003	1, 2	Badger High School Lake Geneva	Robert Kopydowski	Jo Hart	I	6/15-7/16/15	Nursing Assistant	543-300-1zba	J. Hart	8,058.40
2016-0004	N, 5	Wilmet High School Wilmet	Joel Adamczyk	Jo Hart	I	6/15-7/16/15	Nursing Assistant	543-300-1zbb	J.Hart	8,058.40
2016-0006		Johnson Wax Racine	Natalie Piskor	Kim Sanderson	I	6/16/15-6/22/15	Outlook Excel 1 Excel 2 PowerPoint	103-448H-1ZBA 103-491A-1ZBA 103-491B-1ZBA 103-420D-1ZBA	K. Sanderson	4,300.00
2016-0007		Burlington High School Burlington	Mike Raether	Jo Hart	I	6/8-12/11/15	Nursing Assistant	543-300-2bb1	J. Hart	4,391.70
2016-0022		UNFI Sturtevant	Rachel Prest	Michelle Talhami	I	5/26/15-6/11/15	Technical Assistance - CDL Training	900-003-1M1U	Eagle	4,000.00
2016-0029		Honeywell Cable Products	Jeannie Leafblad	Kim Sanderson	I	5/27-7/16/15	Excel Intern Powerpoint Intern	103-495B-1ZBA 103-432C-1ZBB 103-463-1ZBA	K Sanderson	4,020.00
2016-0030		Honeywell Cable Products	Jeannie Leafblad	Kim Sanderson	I	5/27-7/16/15	TA	900-019-1M12	K Sanderson	450.00
2016-0033		Abbey Resort Fontana	Sandra Peklo	Loti Macari	I	5/12/2015	Heartsaver AED	531-448-1ZBY	T. Weidert	770.00
2015-xxx		Lavelle WATG 170 Burlington	Deborah Scheffler	Lauri Howard			Excel PLC			9,983.00
2015-0xxx		S C Johnson Wax Racine	Kenneth Evans	Kim Sanderson	I	4/15-4/22/15	MS Project	103-404b-3iba	K. Sanderson	1,600.00
2015-0xxx		Brunk Lake Geneva	Mike Black	Liz Oplatka	I	2/2/15-2/3/15	Technical Assistance: Retreat	900-019-3M1T	L. Oplatka	3,720.00

Contract Number	ATC	Company	City	Company Contact Person	Gateway Contact Person	Status	Dates	Course Name	Course Number	Instructor	Est. Cost
										TOTAL	2,759,020.48

## GATEWAY TECHNICAL COLLEGE DISTRICT BOARD

Roll Call \_\_\_\_\_  
Action   x  \_\_\_\_\_  
Information \_\_\_\_\_  
Discussion \_\_\_\_\_

### ADVISORY COMMITTEE ACTIVITY REPORT

Summary of Item: Approval of:

- New Members as of May 1, 2015
- 2014-15 Meeting Schedule as of May 1, 2015

Staff Liaison: John Thibodeau

# GATEWAY TECHNICAL COLLEGE ADVISORY COMMITTEES -- NEW MEMBERS as of May 1, 2015

PROGRAM Name	Job Title	Employer	County Represented
<b>Aeronautics-Pilot Training</b>			
Payette	Scott	Pilot	Southwest Airlines
			Kenosha
<b>Architectural - Structural Engineering Technician, Civil Engineering Technology - Fresh Water Resources, Civil Engineering Tech</b>			
McMahon	Todd	Project Manager	Concrete Specialties
			Kenosha
<b>Automotive Maintenance Technician &amp; Automotive Technology</b>			
Ellerbrock	Matt	Service Manager	Hartnell Chevrolet
			Kenosha
<b>IT - Junior Web Developer, IT - Software Developer, &amp; IT - Web Developer</b>			
Palermo	Peter	System Administrator	Zilli Hospitality Group
			Kenosha

## ADVISORY COMMITTEE 2014-2015 MEETING SCHEDULE as of May 1, 2015

ADVISORY COMMITTEE	DEAN	FALL 2014	SPRING 2015
Accounting	M. Babu	Tuesday, September 16, 2014 5:30 pm, Bioscience	Tuesday, February 17, 2015 5:30pm, Burlington Center – Room 100
Administrative Professional Office Assistant	R. Koukari	Tuesday, September 16, 2014 5:30 pm, Bioscience	Tuesday, February 17, 2015 5:30 pm, Burlington Center – Room 100
Adult Basic Education	C. Jennings	Tuesday, October 14, 2014 2:30 pm, Racine Campus - R102	Tuesday, April 28, 2015 2:00 pm, Racine Campus - R102
Adult High School	C. Jennings	Wednesday, October 22, 2014 2:00 pm, IMET - room 104	Wednesday, March 25, 2015 2:30 pm, IMET- room 225
Aeronautics-Pilot Training	R. Koukari	Thursday, June 19, 2014 1:00 pm Horizon - room 106	Wednesday, March 4, 2015 11:00 am, Horizon Center - Room 106
Air Conditioning, Heating, & Refrigeration Technology Facilities Maintenance	R. Koukari	Monday, Oct. 06, 2014 5:30 pm, Kenosha Campus	Monday, March 2, 2015 5:00 pm, Kenosha Campus
Architectural-Structural Engineering Technician Civil Engineering Technology - Fresh Water Resources Civil Engineering Technology – Highway Technology Land Survey Technician	R. Koukari	Monday, October 13, 2014 5:30 , iMET - Room 104	Wednesday, March 18, 2015 5:30 pm, iMET - Room 401
Automated Manufacturing Systems Technology Electromechanical Technology	R. Koukari	Wednesday, October 8, 2014 8:00 am, Elkhorn Campus	Wednesday, March 18, 2015 8:00 am, Lakeview
Automotive Maintenance Technician Automotive Technology	R. Koukari	Tuesday, October 7, 2014 5:00 pm, Horizon Center	Tuesday, March 3, 2015 5:30 pm, Horizon Center - Room 106
Barber Technologist Cosmetology	T. Simmons	Thursday, October 9, 2014 5:00 pm, Kenosha Campus - S139	Thursday, March 26, 2015 5:00 p.m., Racine Campus - Room R102
Business Management Small Business Entrepreneurship Supervisory Management	M. Babu	Tuesday, September 16, 2014 5:30 pm, Bioscience	Tuesday, February 17, 2015 5:30pm, Burlington Center – Room 100
CNC Production Technician Industrial Mechanical Technician Tool and Die Technician	R. Koukari	Thursday, Oct. 16, 2014 1:00 pm Phone Conference or iMET Room 401	Thursday, March 26, 2015 5:30 p.m., Racine Campus - Room R108
Community Pharmacy Technician	M. O'Donnell	Wednesday, October 15 4:00 pm, Elkhorn Room E229	Tuesday, March 24, 2015 5:00 pm Phone Conference or Elkhorn Room E229

ADVISORY COMMITTEE	DEAN	FALL 2014	SPRING 2015
Criminal Justice - Law Enforcement Criminal Justice – Law Enforcement Academy	T. Simmons	Wednesday, October 1, 2014 Burlington Campus - Room 100	Wednesday, April 1, 2015 11:00 a.m., Burlington Campus - Room 100
Culinary Arts	T. Simmons	Wednesday, October 8, 2014 Racine Campus - Lake Bldg. - Break Water	Wednesday, March 25, 2015 3:00 p.m. Racine Campus - Break Water
Dental Assistant		Thursday, November 13, 2014- 5:00 pm Kenosha Campus	Thursday, March 19, 2015 5:00 pm, Kenosha Campus - Room S127
Diesel Equipment Mechanic Diesel Equipment Technology	R. Koukari	Wednesday, Oct. 1, 2014 5:30 pm, Horizon Center	Wednesday, February 25, 2015 5:30 pm, Horizon Center - Room 106
Early Childhood Education Instructional Assistant	T. Simmons	Wednesday, October 1, 2014 5:00 pm, Racine Campus - Huron Room 104	Wednesday, March 25, 2015 5:00 pm, Racine Campus - Huron Room 104
Electrical Engineering Technology Electronics	R. Koukari	Monday, October 13, 2014 5:30 , iMET - Room 104	Wednesday, March 18, 2015 5:30 pm, iMET - Room 401
Emergency Medical Technician Advanced EMT EMT Paramedic Fire Medic Paramedic Technician	T. Simmons	Wednesday, October 1, 2014 3:00 pm, HERO Center - Room H101	Wednesday, April 1, 2015 3:00 pm HERO Center - Room H101
Graphic Communications	M. Babu	Thursday, September 25, 2014 5:30 pm,	Thursday, April 16, 2014 5:30 pm, Elkhorn Campus
Health Information Technology	M. O'Donnell		Thursday, April 16, 2015 2:00 pm Racine Campus Room L119B
Health Unit Coordinator	M. O'Donnell		
Horticulture	R. Koukari	Monday, Sept 29, 2014 6:00 pm Pike Creek Center	Monday, March 30, 2015 6:00 pm, Pike Creek Center
Hotel/Hospitality Management	T. Simmons	October 7, 2014 – Elkhorn Campus – Room E229	Tuesday, March 31, 2015 3:00 p.m., Elkhorn Campus E229
Human Services Associate	T. Simmons	Tuesday, October 7, 2014 5:30 pm, Racine Campus	Thursday, April 2, 2015 5:00 p.m., Racine Campus - Room R102
Interior Design	R. Koukari	Thursday, Oct. 24 4:30 pm, iMET Center	Thursday, April 23, 2015 3:30 pm, Kenosha Public Museum
Information Technology - Computer Support Specialist Information Technology - Network Specialist	R. Koukari	Thursday, September 18, 2014 5:30 pm, Kenosha Campus	Thursday, February 19, 2015 5:30 pm, Burlington Campus

ADVISORY COMMITTEE	DEAN	FALL 2014	SPRING 2015
Information Technology - Junior Web Developer Information Technology - Software Developer Information Technology - Web Developer	R. Koukari	Thursday, September 18, 2014 5:30 pm, Kenosha Campus	Thursday, February 19, 2015 5:30 pm, Burlington Campus
Marketing	M. Babu	Tuesday, September 16, 2014 5:30 pm, Bioscience	Tuesday, February 17, 2015 5:30 pm, Burlington Center – Room 100
Mechanical Design Technology	R. Koukari	Thursday, Oct. 8, 2014 4:30 pm, iMET - Room 401	Thursday, April 9, 2015 4:30 pm, iMET - Room 401
Medical Assistant	M. O'Donnell		Tuesday, March 31, 2015 8:30 am, Racine Campus, Rm R306A
Nursing Assistant	D. Skewes	Tuesday, October 14, 2014. 3:00 pm Burlington Center	Tuesday, April 14, 2015 3:00 pm, Burlington Center - Room 100
Nursing Associate Degree Practical Nursing	D. Skewes	October 9, 2014 2:00 pm, Sustainable Living Center	Thursday, April 9, 2015 2:00 pm, Kenosha Campus - Sustainability Ctr
Physical Therapist Assistant	M. O'Donnell	Wednesday, December 10, 2015 6:00 pm, Kenosha Campus - PTA Lab	Wednesday, April 22, 2015 6:00 pm Kenosha Campus - Room S101
Professional Communications	M. Babu	Thursday, September 25, 2014 5:30 pm, TBD	Thursday, April 16, 2014 5:30pm, Elkhorn Campus
Radiography	M. O'Donnell	Tuesday, October 7, 2014 4:00 pm, Burlington Center	Program Suspended No Meeting Required
Surgical Technology	M. O'Donnell	Monday, December 1, 2014 4:00 pm, Kenosha Campus	
Welding Welding/Maintenance & Fabrication	R. Koukari	Wednesday, Oct. 15, 2014 5:30 pm, iMET Center	Wednesday, March 25, 2015 5:30 p.m., Burlington Campus - Room 100

**GATEWAY TECHNICAL COLLEGE DISTRICT BOARD**

Roll Call \_\_\_\_\_  
Action \_\_\_\_\_X  
Information \_\_\_\_\_  
Discussion \_\_\_\_\_

**PROGRAM TITLE AND AID CODE CHANGE REQUEST  
31-444-2 CNC Production Technician**

**Summary of Item:**

Board approval is requested to submit the Program Title and Number change request to the Wisconsin Technical College System for consideration.

**Attachments:** Summary of Rationale to Modify Program Title and Number

**Staff Liaison:** Ray Koukari, Jr., Dean



## **Summary of Rationale to Modify Program Title and Aid Code**

The CNC Production Technician program is seeking approval to modify its program title to CNC Programmer. The program faculty, in consultation with their advisory committee, would like to transition their current two-semester program to a three-semester program in order to address the needs of local industry by adding additional courses. The program will then seek to create an embedded technical diploma (titled CNC Production Technician) using the current two semesters of courses that will lead into the new three-semester program. This will provide students additional opportunities for training and advancement within the CNC career pathway.

The program is also requesting approval to modify its program number from 31-444-2 to 31-444-X (the last digit will be assigned to us by WTCS), so that the current number of 31-444-2 can be utilized for the embedded technical diploma, thus allowing for an easier transition for students in the current program.

The requested modifications to the title and number have been approved by the program's internal curriculum committee and endorsed by its advisory committee.

# GATEWAY TECHNICAL COLLEGE DISTRICT BOARD

Roll Call \_\_\_\_\_  
Action \_\_\_\_\_X  
Information \_\_\_\_\_  
Discussion \_\_\_\_\_

## **Program Approval Gas Utility Construction & Service Technical Diploma**

### **Summary of Item:**

Board approval is requested for a Gas Utility Construction & Service Technical Diploma program. Upon Board approval, the Concept Review document will be submitted to the Wisconsin Technical College System Board for approval.

### **Attachments:**

Summary of Concept Review

### **College Strategic Directions and/or Executive Limitations:**

Strategic Directions 1 and 2

### **Staff Liaison:**

Anne Whynott  
Ray Koukari

## **Gas Utility Construction & Service Technical Diploma Concept Review**

The Gas Utility Construction & Service program is a one-year technical diploma program that will prepare students to install, maintain, and operate natural and propane gas distribution systems used to supply residential, commercial, and industrial customers.

We Energies and their contractor partners approached Gateway regarding development of this program. There is currently only one training program similar to this in Wisconsin, located at Northeast Wisconsin Technical College in Green Bay. That program is very successful, but cannot produce enough qualified candidates to fill the projected employment needs.

After discussion with the employer group, Gateway conducted a formal needs assessment survey. All six potential employers responded. Below are highlights of the survey results:

- 1,557 workers are currently employed in our region in this capacity
- The number of workers employed has increased by 245 over the past three years primarily due to business growth and staff retirements.
- Approximately 100 additional job openings are projected for the next three years.
- Starting wages for these positions are between \$19 and \$24 per hour.
- All of the employers indicated that they currently have difficulties finding qualified workers and that they would hire graduates of the program.
- Employers stated that they are currently training on-the-job and that a program at Gateway would greatly shorten the time period it takes for new hires to become productive employees.





**Partners in Design**  
ARCHITECTS

**Partners in Design  
Architects, Inc.**

**W I S C O N S I N**  
600 Fifty Second Street  
Suite 220  
Kenosha, WI 53140  
voice: 262.652.2800  
fax: 262.652.2812

**I L L I N O I S**  
2610 Lake Cook Road  
Suite 280  
Riverwoods, IL 60015  
voice: 847.940.0300  
fax: 847.940.1045

April 28, 2015

Mr. William Whyte  
Gateway Technical College  
3520 30<sup>th</sup> Avenue  
Kenosha, Wisconsin 53140

Re: Racine Campus:  
2015 Lighting Upgrade  
Official Notice No. 1476

**Dear Mr. Whyte:**

On Thursday, April 23, 2015 we received prime contractor bids for the 2015 Lighting Upgrade project on the Racine Campus. Judy Braun was in attendance on behalf of the Gateway Technical College and I was in attendance on behalf of Partners In Design Architects for the receipt of bids.

The 2015 Lighting Upgrade Project consisted of a Three bid packages:

**Bid Package 'A'** - All the labor and material necessary to complete all the work associated with replacing the Welding Lab high-bay fixtures with new owner supplied fixtures.

**Bid Package 'B'** - All labor and material necessary to add new owner supplied fixtures to each welding booth and the grinding room.

**Bid Package 'C'** - All labor and material necessary to replace the Racine Building 1<sup>st</sup> floor corridor fixtures with new owner supplied fixtures.

The owner supplied replacement fixtures and lamps were bid per fixture type. Replacement fixture types are labeled as A, B, C1, C2, D, F1, F2 and G, the replacement lamp is label as type E.

Having reviewed both of the bids with Mr. Thielen, and yourself, Gateway has decided to accept the base bids 'B' and 'C' for the general construction work and the material bid to complete the accepted scope of work. We are recommending that the College enter into a contract with Electrical Contractors of Wisconsin Inc. (ECI) to complete the general construction portion of 2015 Lighting Upgrade/Repair project and CED Interstate Electric to supply the fixtures and lamp types B, C1, C2, D, E, F1, F2 and G.

Based on our bid evaluation, we further recommend that the contract value for ECI to be \$9,600.00. We also recommend that the contract value for CED Interstate be \$23, 919.85. Gateway should also budget approximately \$10,000.00 for architectural and engineering fees, and reimbursable costs related to the competitive bid process.

Page 1 of 2

[www.pidarchitects.com](http://www.pidarchitects.com)

COLLABORATION

Prime Contract: \$ 9,600.00 (*Contract Value for ECI*)  
Fixture Contract: \$ 23,919.85 (*Contract Value for CED Interstate*)  
A&E Fees \$ 10,000.00 (*Hourly*)  
Reimbursable fees \$ 250.00

**Total Project Cost: \$ 43,769.85**

We further recommend that a contingency of roughly \$3,230.00, be held by the college in a contingency fund outside of the construction contract for any unforeseen condition that can arise due to the renovation nature of the project. Should you have any questions regarding our recommendation, please do not hesitate to give me a call.

Sincerely,



Jeffrey E. Bridleman







# GATEWAY TECHNICAL COLLEGE DISTRICT BOARD

Roll Call \_\_\_\_\_  
Action   X    
Information \_\_\_\_\_  
Discussion \_\_\_\_\_

## 2015 PARKING LOT REPAIRS RACINE CAMPUS BID NO. 1477

**Summary of Item:** The College solicited for and received two (2) sealed prime contractor bids for the 2015 Lighting Upgrade on the Racine Campus. The bid consisted of a five (5) Bid packages

We are recommending the College enter into a contract for Bid Packages A, through D for the general construction work with Cicchini Asphalt to complete the repairs of parking lots A, B, C, and D.

The contract totals and fee summary is as follows:

Prime Contract (contract value for Cicchini Asphalt):	\$ 102,874.00
Architectural Fees (9.5% of Construction Cost):	9,775.00
Reimbursable Fees	<u>225.00</u>
<b>Total Project Cost:</b>	<b>\$ 112,874.00</b>
<b>Contingency Fund:</b>	<b>\$ 10,000.00</b>

**Attachments:** Letter of Recommendation for Award of Bids & Tabulation of Bids

**Ends Statements  
and/or Executive  
Limitations:** Section 3 – Executive Limitations,  
Policy 3.5, Financial Condition

**Staff Liaison:** William R. Whyte



**Partners in Design**  
ARCHITECTS

**Partners in Design  
Architects, Inc.**

W I S C O N S I N  
600 Fifty Second Street  
Suite 220  
Kenosha, WI 53140  
voice: 262.652.2800  
fax: 262.652.2812

I L L I N O I S  
2610 Lake Cook Road  
Suite 280  
Riverwoods, IL 60015  
voice: 847.940.0300  
fax: 847.940.1045

April 29, 2015

Mr. William Whyte  
Gateway Technical College  
3520 30<sup>th</sup> Avenue  
Kenosha, Wisconsin 53140

Re: Racine Campus:  
2015 Parking Lot Repairs  
Official Notice No. 1477

**Dear Mr. Whyte:**

On Thursday, April 23, 2015 we received prime contractor bids for the 2015 Parking Lot Repairs project on the Racine Campus. Judy Braun was in attendance on behalf of the Gateway Technical College and I was in attendance on behalf of Partners In Design Architects for the receipt of bids.

The 2015 Parking Lot Repairs Project consisted of a five bid packages:

**Bid Package 'A'** - All the labor and material necessary to patching as necessary, crack repair, seal coating and re-stripping of Parking Lot A.

**Bid Package 'B'** - All the labor and material necessary to patching as necessary, crack repair, seal coating and re-stripping of Parking Lot B.

**Bid Package 'C'** - All the labor and material necessary to patching as necessary, crack repair, seal coating and re-stripping of Parking Lot C.

**Bid Package 'D'** - All the labor and material necessary to patching as necessary, crack repair, seal coating and re-stripping of Parking Lot D.

**Bid Package 'E'** - All the labor and material necessary to expand the Racine Building truck dock entrance radius.

Having reviewed the bids with Mr. Thielen, and yourself, Gateway has decided to accept bid packages 'A' through 'D' for the general construction work. We are recommending that the College enter into a contract with Cicchini Asphalt to complete the repairs of parking lots A, B, C and D.

Based on our bid evaluation, we further recommend that the contract value for Cicchini Asphalt to be \$102,847.00. Gateway should also budget approximately \$10,000.00 for architectural and engineering fees, and reimbursable costs related to the competitive bid process.

Prime Contract:	\$ 102,874.00	<i>(Contract Value for Cicchini Asphalt)</i>
A&E Fees	\$ 9,775.00	<i>(9.5% of Construction Cost)</i>
Reimbursable fees	\$ 225.00	

**Total Project Cost: \$ 112,874.00**

Page 1 of 2

[www.pidarchitects.com](http://www.pidarchitects.com)

COLLABORATION

We further recommend that a contingency of roughly \$10,000.00, be held by the college in a contingency fund outside of the construction contract for any unforeseen condition that can arise due to the renovation nature of the project. Should you have any questions regarding our recommendation, please do not hesitate to give me a call.

Sincerely,



Jeffrey E. Bridleman

BID TABULATION  
 Official No. 1477

GTC Racine Campus – RA Parking Lot Repairs 2015

Project No.: 191.15.041

Bid Date: Thursday April 23, 2015

Bid Time: 2:00 p.m.



Partners in Design  
 ARCHITECTS

General Contractor	Bid Bond	Bid Package A	Bid Package B	Bid Package C	Bid Package D	Bid Package E	Addendum 1	Comments
A.W.Oaks + Son	X	\$18,500.00	\$20,700.00	\$61,900.00	\$31,000.00	\$41,600.00	X	
Cicchini Asphalt	X	\$13,831.00	\$14,381.00	\$49,831.00	\$24,831.00	\$29,381.00	X	

X. POLICY GOVERNANCE MONITORING REPORTS

A. End Statement Monitoring

1. End Statement #1 – **Gateway provides** academic programs and services that meet the current and future postsecondary technical education needs of our tri-community and assists in the preparation and transition of all learners. Academic Programs for All Learners and Online Learning Models.  
(Z. Haywood and J. Robshaw)

**GATEWAY TECHNICAL COLLEGE DISTRICT BOARD**

Roll Call	_____
Action	_____X_____
Information	_____
Discussion	_____

**POLICY GOVERNANCE MONITORING REPORTS**  
**Ends Statement Monitoring**  
**Ends Statement #1**

**Summary:** Gateway provides academic programs and services that meet the current and future postsecondary technical education needs of our tri-community and assists in the preparation and transition of all learners.

**Staff Liaison:** Zina Haywood and Jeff Robshaw

X. POLICY GOVERNANCE MONITORING REPORTS

B. Executive Limitations

1. 3.4 FY15-16 Budget/Forecasting Budget Approval (B. Thomey)
2. 3.5 Resolution No. F-2015-2016A.1 – Resolution Authorizing the Issuance of \$8,000,000 General Obligation Promissory Notes, Series F-2015-2016A (B. Thomey)

# GATEWAY TECHNICAL COLLEGE DISTRICT BOARD

Roll Call  X  
Action  \_\_\_\_\_  
Information  \_\_\_\_\_  
Discussion  \_\_\_\_\_

## FISCAL YEAR 2015-2016 BUDGET APPROVAL

Summary of Item: Administration recommends the FY 2015 – 2016 budget be approved.

Attachments: Fiscal Year 2015-2016 Preliminary Budget Calendar  
Class I Legal Notice Budget Summary FY 2015 – 2016  
Fund Statements:  
General, Special Revenue – Operational,  
Special Revenue – Non Aidable, Capital Projects,  
Debt Service, Enterprise  
Combined Fund Summary  
Equalized Valuations and Mill Rates

Ends Statements and/or

Executive Limitations: Section 1- Governance Process  
Policy 1.14 - College Budget Process, ¶8  
Section 3 - Executive Limitations  
Policy 3.4 - Budgeting/Forecasting, ¶¶1 – 5

Staff Liaison: Bane Thomey

### ROLL CALL

Ram Bhatia \_\_\_\_\_  
William Duncan \_\_\_\_\_  
Ronald J. Frederick \_\_\_\_\_  
Susan Greenfield \_\_\_\_\_  
Bethany Ormseth \_\_\_\_\_  
Scott Pierce \_\_\_\_\_  
Roger Zacharias \_\_\_\_\_  
Pamela Zenner-Richards \_\_\_\_\_  
Gary Olsen \_\_\_\_\_

Top066.docx 05/08/15





## Preliminary FY 2015-2016 Budget Calendar

<b>November 20, 2014</b>	Gateway District Board of Trustees (District Board) Review and approve budget parameters and budget calendar for FY2016
<b>December 3, 2014</b>	Budget Officers - Budget kickoff meeting
<b>January, 2015</b>	Budget on Campus All Staff – Budget Development
<b>January 26, 2015</b>	Administrative In-service
<b>January 30, 2015</b>	All operating and capital budgets due to Budget Office ( <b><i>all data must be entered into Adaptive Planning by this time</i></b> )
<b>February 9, 2015</b>	ELC - Review preliminary budget
<b>February - March, 2015</b>	Budget owner meetings ELC - Review and Develop list of recommended budget strategies and adjust budget as necessary
<b>March 19, 2015</b>	Budget status report to District Board
<b>April, 2015</b>	Budget on Campus Administrative In-service
<b>April 3, 2015</b>	Distribute proposed budget to District Board
<b>April 16, 2015</b>	District Board Approve preliminary budget for public hearing
<b>April 18, 2015</b>	Publish Class I notice of public hearing
<b>May 4, 2015</b>	District Board Public Hearing - Racine
<b>May 14, 2015</b>	District Board Approve budget (if change is not needed from public hearing)
<b>May – June 2015</b>	Budget on Campus Revise budget (as determined as a result of the public hearing)
<b>June 18, 2015</b>	District Board Approve FY 2016 Budget, if needed
<b>June 30, 2015</b>	Submit approved FY 2016 Budget to State Board
<b>July, 2015</b>	Administrative In-service
<b>October, 2015</b>	District Board Reaffirm tax levy Administrative In-service

PRELIMINARY  
May 14, 2015 Board Meeting

**Gateway Technical College  
BUDGET SUMMARY**

FISCAL YEAR JULY 1, 2015 - JUNE 30, 2016

A public hearing on the proposed fiscal year 2015-16 budget for the Gateway Technical College District was held Monday, May 4, 2015 at 7:00p.m., Quad Room 102, Racine Campus, Gateway Technical College, 1001 S Main Street, Racine, Wisconsin. A detailed budget is available for public inspection at the Administration Center, Kenosha Campus, 3520 30th Avenue, Kenosha WI 53144-1690, Monday through Friday between the hours of 8:00 a.m. and 4:30 p.m.

**PROPERTY TAX HISTORY and EXPENDITURE SURVEY**

FISCAL YEAR	EQUALIZED VALUATION	MILL RATES		TOTAL MILL RATE	PERCENT INCR (DECR)
		OPERATIONAL (2)	DEBT SERVICE		
1997-98	\$19,503,890,279	1.35439	0.21127	1.56566	-1.17%
1998-99	\$20,680,398,460	1.34121	0.22429	1.56550	-0.01%
1999-00	\$22,286,342,703	1.34249	0.20324	1.54573	-1.26%
2000-01	\$23,361,009,349	1.41110	0.19264	1.60374	3.75%
2001-02	\$25,054,872,713	1.43378	0.18559	1.61937	0.97%
2002-03	\$26,953,225,195	1.36875	0.18684	1.55559	-3.94%
2003-04	\$29,223,903,873	1.30031	0.18266	1.48297	-4.67%
2004-05	\$32,011,436,858	1.23456	0.17253	1.40709	-5.12%
2005-06	\$35,561,553,706	1.16826	0.16169	1.32995	-5.48%
2006-07	\$39,735,348,517	1.08577	0.14974	1.23551	-7.10%
2007-08	\$42,651,718,457	1.05097	0.14654	1.19751	-3.08%
2008-09	\$43,959,586,231	1.07715	0.14931	1.22646	2.42%
2009-10	\$43,837,848,897	1.12328	0.15874	1.28202	4.53%
2010-11	\$41,935,823,079	1.21998	0.17114	1.39112	8.51%
2011-12	\$41,111,928,678	1.24443	0.18812	1.43255	2.98%
2012-13	\$38,180,224,464	1.33999	0.21673	1.55672	8.67%
2013-14	\$36,730,173,803	1.39289	0.24182	1.63471	5.01%
2014-15	\$37,360,066,597	0.51335	0.25696	0.77031	-52.88%
2015-16 (1)	\$37,360,066,597	0.52447	0.27612	0.80059	3.93%

FISCAL YEAR	TOTAL EXPENDITURES (3)	PERCENT INCR (DECR)	PROPERTY TAX LEVY	PERCENT INCR (DECR)	TAX ON A \$150,000 HOUSE
1997-98	\$57,505,844	-3.26%	\$30,536,419	4.00%	\$234.85
1998-99	\$64,449,772	12.08%	\$32,375,164	6.02%	\$234.83
1999-00	\$65,026,016	0.89%	\$34,448,589	6.40%	\$231.86
2000-01	\$69,345,501	6.64%	\$37,464,985	8.76%	\$240.56
2001-02	\$78,182,879	12.74%	\$40,573,084	8.30%	\$242.91
2002-03	\$91,369,361	16.87%	\$41,928,338	3.34%	\$233.34
2003-04	\$90,624,795	-0.81%	\$43,338,000	3.36%	\$222.45
2004-05	\$88,207,339	-2.67%	\$45,043,000	3.93%	\$211.06
2005-06	\$92,959,591	5.39%	\$47,295,000	5.00%	\$199.49
2006-07	\$100,174,338	7.76%	\$49,093,282	3.80%	\$185.33
2007-08	\$97,829,397	-2.34%	\$51,075,834	4.04%	\$179.63
2008-09	\$112,347,984	14.84%	\$53,914,744	5.56%	\$183.97
2009-10	\$124,439,089	10.76%	\$56,201,000	4.24%	\$192.30
2010-11	\$149,386,142	20.05%	\$58,338,000	3.80%	\$208.67
2011-12	\$150,394,244	0.67%	\$58,895,000	0.95%	\$214.88
2012-13	\$149,888,431	-0.34%	\$59,436,000	0.92%	\$233.51
2013-14	\$145,791,610	-2.73%	\$60,043,000	1.02%	\$245.21
2014-15	\$146,174,685	0.26%	\$28,778,925	-52.07%	\$115.55
2015-16	\$149,104,135	2.00%	\$29,910,288	3.93%	\$120.09

**BUDGET/FUND BALANCE SUMMARY - ALL FUNDS**

	General Fund	Special Revenue Operational Fund	Special Revenue Non Aidable Fund	Capital Projects Fund	Debt Service Fund	Proprietary Funds	Total
Tax Levy	\$ 17,500,083	\$ 2,049,205	\$ -	\$ -	\$ 10,316,000	\$ 45,000	\$ 29,910,288
Other Budgeted Revenues	60,358,782	5,907,065	39,934,000	240,000	5,000	655,000	107,099,847
Subtotal	77,858,865	7,956,270	39,934,000	240,000	10,321,000	700,000	137,010,135
Budgeted Expenditures	77,858,865	7,956,270	39,934,000	12,240,000	10,415,000	700,000	149,104,135
Excess of Revenues Over Expenditures	-	-	-	(12,000,000)	(94,000)	-	(12,094,000)
Operating Transfers	-	-	-	-	-	-	-
Proceeds from Debt	-	-	-	12,000,000	255,000	-	12,255,000
Estimated Fund Balance 7/1/15	23,735,143	2,725,187	2,109,669	2,261,689	2,301,248	922,840	34,055,776
Estimated Fund Balance 6/30/16	\$ 23,735,143	\$ 2,725,187	\$ 2,109,669	\$ 2,261,689	\$ 2,462,248	\$ 922,840	\$ 34,216,776

- (1) Equalized valuation is projected to remain flat in fiscal year 2015-16.
- (2) Until FY2013-14 the Operational Mill rate may not exceed 1.500 per s. 38.16 of the Wisconsin Statutes.
- (3) Fiscal years 2013-14 represent actual amounts; 2014-15 is projected; and 2015-16 is in the proposed budget.

**Gateway Technical College**  
**BUDGET SUMMARY - GENERAL FUND**  
FISCAL YEAR JULY 1, 2015 - JUNE 30, 2016

A public hearing on the proposed fiscal year 2015-16 budget for the Gateway Technical College District was held Monday, May 4, 2015 at 7:00p.m., Quad F

	2013-14 ACTUAL <sup>(4)</sup>	2014-15 ADOPTED BUDGET	2014-15 MODIFIED BUDGET	2014-15 ESTIMATE <sup>(5)</sup>	2015-16 BUDGET	
<b>REVENUES</b>						
Local Government	\$ 48,885,297	\$ 17,250,083	\$ 17,047,925	\$ 17,047,925	\$ 17,500,083	
State Aids	5,616,805	37,989,039	38,191,197	38,191,197	37,989,039	
Program Fees	16,376,974	17,034,937	17,034,937	15,672,142	15,922,142	
Material Fees	764,658	797,467	797,467	733,670	755,680	
Other Student Fees	1,774,454	2,052,974	2,052,974	1,888,736	1,983,172	
Institutional	3,110,928	3,820,000	3,820,000	3,578,846	3,678,847	
Federal	29,544	30,000	30,000	29,902	29,902	
<b>TOTAL REVENUE</b>	<b>76,558,660</b>	<b>78,974,500</b>	<b>78,974,500</b>	<b>77,142,418</b>	<b>77,858,865</b>	
<b>EXPENDITURES</b>						
Instruction	49,744,636	51,853,136	51,225,136	50,043,833	50,687,445	
Instructional Resources	1,144,165	1,248,370	1,248,370	1,219,581	1,240,851	
Student Services	8,851,793	10,249,749	11,077,749	10,822,285	10,901,808	
General Institutional	7,400,666	7,892,283	7,946,283	7,763,034	7,517,398	
Physical Plant	7,548,672	8,001,462	7,947,462	7,764,185	7,511,363	
Public Service	-	-	-	-	-	
<b>TOTAL EXPENDITURES</b>	<b>74,689,932</b>	<b>79,245,000</b>	<b>79,445,000</b>	<b>77,612,918</b>	<b>77,858,865</b>	
<b>NET REVENUE (EXPENDITURES)</b>	<b>1,868,728</b>	<b>(270,500)</b>	<b>(470,500)</b>	<b>(470,500)</b>	<b>-</b>	
<b>OTHER SOURCES (USES)</b>						
Operating Transfers In (Out)	(2,113,000)	(150,000)	(150,000)	(150,000)	-	
<b>TOTAL RESOURCES (USES)</b>	<b>(244,272)</b>	<b>(420,500)</b>	<b>(620,500)</b>	<b>(620,500)</b>	<b>-</b>	
<b>TRANSFERS TO (FROM) FUND BALANCE</b>						
Reserve for Operations	(244,272)	(420,500)	(620,500)	(620,500)	-	
Reserve for Other Post Employment Benefits	-	-	380,000	380,000	-	
Reserve for Prepaid Expense	-	-	-	(130,086)	-	
Designated for State Aid Fluctuations	-	-	-	-	-	
Designated for Subsequent Year	-	-	(380,000)	(380,000)	-	
<b>TOTAL TRANSFERS TO (FROM) FUND BALANCE</b>	<b>(244,272)</b>	<b>(420,500)</b>	<b>(620,500)</b>	<b>(750,586)</b>	<b>-</b>	
Beginning Fund Balance	24,730,001	24,485,729	24,485,729	24,485,729	23,735,143	
Ending Fund Balance	\$ 24,485,729	\$ 24,065,229	\$ 23,865,229	\$ 23,735,143	\$ 23,735,143	
<hr/>						
<b>ALL GATEWAY FUNDS</b>						
	2013-14 ACTUAL <sup>(4)</sup>	2014-15 ADOPTED BUDGET	2014-15 MODIFIED BUDGET	2014-15 ESTIMATE <sup>(5)</sup>	2015-16 BUDGET	% Chng <sup>(6)</sup>
<b>EXPENDITURES BY FUND</b>						
General Fund	74,689,932	79,245,000	79,445,000	77,612,918	77,858,865	-2.0%
Special Revenue - Operational Fund	6,484,181	9,221,000	9,221,000	7,608,802	7,956,270	-13.7%
Special Revenue - Non Aidable Fund	40,708,333	44,504,000	44,504,000	36,259,000	39,934,000	-10.3%
Capital Projects Fund	14,479,835	13,390,000	15,174,465	14,428,965	12,240,000	-19.3%
Debt Service Fund	8,989,037	9,800,000	9,800,000	9,675,000	10,415,000	6.3%
Enterprise Fund	440,292	600,000	600,000	590,000	700,000	16.7%
<b>TOTAL EXPENDITURES BY FUND</b>	<b>\$145,791,610</b>	<b>\$156,760,000</b>	<b>158,744,465</b>	<b>146,174,685</b>	<b>149,104,135</b>	<b>-6.1%</b>
<b>REVENUES BY FUND</b>						
General Fund	76,558,660	78,974,500	78,974,500	77,142,418	77,858,865	-1.4%
Special Revenue - Operational Fund	6,999,318	9,221,000	9,221,000	8,037,937	7,956,270	-13.7%
Special Revenue - Non Aidable Fund	40,989,032	44,504,000	44,504,000	36,272,000	39,934,000	-10.3%
Capital Projects Fund	512,001	240,000	240,000	215,000	240,000	0.0%
Debt Service Fund	8,887,092	9,605,000	9,605,000	9,605,000	10,321,000	7.5%
Enterprise Fund	531,109	600,000	600,000	590,000	700,000	16.7%
<b>TOTAL REVENUE BY FUND</b>	<b>\$134,477,212</b>	<b>\$143,144,500</b>	<b>143,144,500</b>	<b>\$131,862,355</b>	<b>137,010,135</b>	<b>-4.3%</b>

(4) Actual is presented on a budgetary basis.

(5) Estimate is based upon 9 months actual and 3 months estimate.

(6) (2015-2016 budget - 2014-2015 budget) / 2014-2015 budget.

**GENERAL FUND**

2015-16 BUDGETARY STATEMENT OF  
RESOURCES, USES AND CHANGES IN FUND BALANCE

lege, 1001 S Main Street, Racine, Wisconsin. A detailed budget is available for public inspection at the Administration Center, Kenosha C

	2013-14 ACTUAL*	2014-15 ADOPTED BUDGET	2014-15 MODIFIED BUDGET	2014-15 ESTIMATE**	2015-16 BUDGET
<b>REVENUES</b>					
Local Government	\$ 48,885,297	\$ 17,250,083	\$ 17,047,925	\$ 17,047,925	\$ 17,500,083
State Aids	5,616,805	37,824,039	38,026,197	38,026,197	37,824,039
Other State Aids		165,000	165,000	165,000	165,000
Program Fees	16,376,974	17,034,937	17,034,937	15,672,142	15,922,142
Material Fees	764,658	797,467	797,467	733,670	755,680
Other Student Fees	1,774,454	2,052,974	2,052,974	1,888,736	1,983,172
Federal	29,544	30,000	30,000	29,902	29,902
Institutional	3,110,928	3,820,000	3,820,000	3,578,846	3,678,847
<b>TOTAL REVENUE</b>	<b>76,558,660</b>	<b>78,974,500</b>	<b>78,974,500</b>	<b>77,142,418</b>	<b>77,858,865</b>
<b>EXPENDITURES</b>					
Instruction	49,744,636	51,853,136	51,225,136	50,043,833	50,687,445
Instructional Resources	1,144,165	1,248,370	1,248,370	1,219,581	1,240,851
Student Services	8,851,793	10,249,749	11,077,749	10,822,285	10,901,808
General Institutional	7,400,666	7,892,283	7,946,283	7,763,034	7,517,398
Physical Plant	7,548,672	8,001,462	7,947,462	7,764,185	7,511,363
<b>TOTAL EXPENDITURES</b>	<b>74,689,932</b>	<b>79,245,000</b>	<b>79,445,000</b>	<b>77,612,918</b>	<b>77,858,865</b>
Net Revenue (Expenditures)	1,868,728	(270,500)	(470,500)	(470,500)	-
<b>OTHER SOURCES (USES)</b>					
Operating Transfer In (Out)	(2,113,000)	(150,000)	(150,000)	(150,000)	-
<b>TOTAL RESOURCES (USES)</b>	<b>(244,272)</b>	<b>(420,500)</b>	<b>(620,500)</b>	<b>(620,500)</b>	<b>-</b>
<b>TRANSFERS TO (FROM) FUND BALANCE</b>					
Reserve for Operations	(244,272)	(420,500)	(620,500)	(620,500)	-
Reserve for Other Post Employment Benefits	-	-	380,000	380,000	-
Reserve for Prepaid Expense	-	-	-	(130,086)	-
Designated for State Aid Fluctuations	-	-	-	-	-
Designated for Subsequent Year	-	-	(380,000)	(380,000)	-
<b>TOTAL TRANSFERS TO (FROM) FUND BALANCE</b>	<b>(244,272)</b>	<b>(420,500)</b>	<b>(620,500)</b>	<b>(750,586)</b>	<b>-</b>
Beginning Fund Balance	24,730,001	24,485,729	24,485,729	24,485,729	23,735,143
Ending Fund Balance	<u>\$ 24,485,729</u>	<u>\$ 24,065,229</u>	<u>\$ 23,865,229</u>	<u>\$ 23,735,143</u>	<u>\$ 23,735,143</u>

The General Fund is used to account for all financial activities except those required to be accounted for in another fund.

\* Actual is represented on a budgetary basis.

\*\* Estimate is based upon 9 months actual and 3 months estimate.

**SPECIAL REVENUE - OPERATIONAL FUND**

2015-16 BUDGETARY STATEMENT OF  
RESOURCES, USES AND CHANGES IN FUND BALANCE

College, 1001 S Main Street, Racine, Wisconsin. A detailed budget is available for public inspection at the Administration Center, Kenc

	2013-14 ACTUAL*	2014-15 ADOPTED BUDGET	2014-15 MODIFIED BUDGET	2014-15 ESTIMATE**	2015-16 BUDGET
<b>REVENUES</b>					
Local Government - Tax Levy	\$ 2,338,376	\$ 2,086,000	\$ 2,086,000	\$ 2,086,000	\$ 2,049,205
Local Government - City/County	-	-	-	77,364	99,930
State	716,398	2,284,000	2,284,000	1,955,585	2,329,565
Federal	3,578,342	4,389,000	4,389,000	3,339,588	3,086,000
Institutional	366,202	462,000	462,000	579,400	391,570
<b>TOTAL REVENUE</b>	<b>6,999,318</b>	<b>9,221,000</b>	<b>9,221,000</b>	<b>8,037,937</b>	<b>7,956,270</b>
<b>EXPENDITURES</b>					
Instruction	4,096,731	5,940,000	5,831,000	4,834,059	5,125,407
Student Services	1,586,525	2,070,000	2,179,000	1,813,415	1,563,756
General Institutional	431,908	844,000	844,000	594,329	890,257
Physical Plant	12,952	32,000	32,000	32,000	20,750
Public Service	356,065	335,000	335,000	335,000	356,100
<b>TOTAL EXPENDITURES</b>	<b>6,484,181</b>	<b>9,221,000</b>	<b>9,221,000</b>	<b>7,608,802</b>	<b>7,956,270</b>
Net Revenue (Expenditures)	515,137	-	-	429,135	-
<b>OTHER SOURCES (USES)</b>					
Operating Transfer In (Out)	(1,000,000)	-	(580,000)	(580,000)	-
<b>TOTAL RESOURCES (USES)</b>	<b>(484,863)</b>	<b>-</b>	<b>(580,000)</b>	<b>(150,865)</b>	<b>-</b>
<b>TRANSFERS TO (FROM) FUND BALANCE</b>					
Reserve for Operations	(484,863)	-	-	429,135	-
Designated for Subsequent Year	-	-	(580,000)	(580,000)	-
<b>TOTAL TRANSFERS TO (FROM) FUND BALANCE</b>	<b>(484,863)</b>	<b>-</b>	<b>(580,000)</b>	<b>(150,865)</b>	<b>-</b>
Beginning Fund Balance	3,360,915	2,876,052	2,876,052	2,876,052	2,725,187
Ending Fund Balance	<u>\$ 2,876,052</u>	<u>\$ 2,876,052</u>	<u>\$ 2,296,052</u>	<u>\$ 2,725,187</u>	<u>\$ 2,725,187</u>

The Special Revenue - Operational Fund is used to account for the proceeds and related financial activity of specific revenue sources that are legally restricted to specific purpose other than expendable trusts or major capital projects.

\* Actual is represented on a budgetary basis.

\*\* Estimate is based upon 9 months actual and 3 months estimate.

**SPECIAL REVENUE - NON AIDABLE FUND**  
2015-16 BUDGETARY STATEMENT OF  
RESOURCES, USES AND CHANGES IN FUND BALANCE

College, 1001 S Main Street, Racine, Wisconsin. A detailed budget is available for public inspection at the Administration Center, Kenosha.

	2013-14 ACTUAL*	2014-15 ADOPTED BUDGET	2014-15 MODIFIED BUDGET	2014-15 ESTIMATE**	2015-16 BUDGET
<b>REVENUES</b>					
Local Government	\$ -	\$ -	\$ -	\$ -	\$ -
State Aids	2,438,363	2,570,000	2,570,000	2,100,000	2,153,000
Other Student Fees	878,911	887,000	887,000	830,000	907,000
Institutional	4,623,360	4,948,000	4,948,000	4,560,000	5,314,000
Federal	<u>33,048,398</u>	<u>36,099,000</u>	<u>36,099,000</u>	<u>28,782,000</u>	<u>31,560,000</u>
<b>TOTAL REVENUE</b>	<b>40,989,032</b>	<b>44,504,000</b>	<b>44,504,000</b>	<b>36,272,000</b>	<b>39,934,000</b>
<b>EXPENDITURES</b>					
Student Services	40,119,384	43,753,000	43,753,000	35,515,000	39,103,000
General Institutional	<u>588,949</u>	<u>751,000</u>	<u>751,000</u>	<u>744,000</u>	<u>831,000</u>
<b>TOTAL EXPENDITURES</b>	<b>40,708,333</b>	<b>44,504,000</b>	<b>44,504,000</b>	<b>36,259,000</b>	<b>39,934,000</b>
Net Revenue (Expenditures)	280,699	-	-	13,000	-
<b>OTHER SOURCES (USES)</b>					
Operating Transfer In (Out)	-	-	-	-	-
<b>TOTAL RESOURCES (USES)</b>	<b>280,699</b>	<b>-</b>	<b>-</b>	<b>13,000</b>	<b>-</b>
<b>TRANSFERS TO (FROM) FUND BALANCE</b>					
Reserve for Student Organizations	<u>280,699</u>	-	-	<u>13,000</u>	-
<b>TOTAL TRANSFERS TO (FROM) FUND BALANCE</b>	<b>280,699</b>	<b>-</b>	<b>-</b>	<b>13,000</b>	<b>-</b>
Beginning Fund Balance	1,815,970	2,096,669	2,096,669	2,096,669	2,109,669
Ending Fund Balance	<u>\$ 2,096,669</u>	<u>\$ 2,096,669</u>	<u>\$ 2,096,669</u>	<u>\$ 2,109,669</u>	<u>\$ 2,109,669</u>

Special Revenue - Non Aidable Funds are used to account for assets held by a district in a trustee capacity or as an agent for individuals, private organizations, other governmental units or other funds.

\* Actual is represented on a budgetary basis.

\*\* Estimate is based upon 9 months actual and 3 months estimate.

**CAPITAL PROJECTS FUND**

2015-16 BUDGETARY STATEMENT OF  
RESOURCES, USES AND CHANGES IN FUND BALANCE

College, 1001 S Main Street, Racine, Wisconsin. A detailed budget is available for public inspection at the Administration Center, Kenos

	2013-14 ACTUAL*	2014-15 ADOPTED BUDGET	2014-15 MODIFIED BUDGET	2014-15 ESTIMATE**	2015-16 BUDGET
<b>REVENUES</b>					
Local Government	\$ -	\$ -	\$ -	\$ -	\$ -
State	53,508	70,000	70,000	70,000	70,000
Federal	244,190	70,000	70,000	70,000	70,000
Institutional	214,303	100,000	100,000	75,000	100,000
<b>TOTAL REVENUE</b>	<b>512,001</b>	<b>240,000</b>	<b>240,000</b>	<b>215,000</b>	<b>240,000</b>
<b>EXPENDITURES</b>					
Instruction	4,500,801	3,694,000	4,274,000	3,850,000	4,208,330
Instructional Resources	37,037	23,000	23,000	20,000	5,000
Student Services	166,924	70,000	70,000	70,000	36,670
General Institutional	1,416,359	1,713,500	1,713,500	1,400,000	2,483,000
Physical Plant	8,357,342	7,829,500	9,033,965	9,033,965	5,500,000
Public Service	1,372	60,000	60,000	55,000	7,000
<b>TOTAL EXPENDITURES</b>	<b>14,479,835</b>	<b>13,390,000</b>	<b>15,174,465</b>	<b>14,428,965</b>	<b>12,240,000</b>
Net Revenue (Expenditures)	(13,967,834)	(13,150,000)	(14,934,465)	(14,213,965)	(12,000,000)
<b>OTHER SOURCES (USES)</b>					
Proceeds from Debt	11,000,000	13,000,000	13,000,000	13,000,000	12,000,000
Operating Transfer In (Out)	3,113,000	150,000	730,000	730,000	-
<b>TOTAL RESOURCES (USES)</b>	<b>145,166</b>	<b>-</b>	<b>(1,204,465)</b>	<b>(483,965)</b>	<b>-</b>
<b>TRANSFERS TO (FROM) FUND BALANCE</b>					
Reserve for Capital Projects	145,166	-	(1,204,465)	(483,965)	-
<b>TOTAL TRANSFERS TO (FROM) FUND BALANCE</b>	<b>145,166</b>	<b>-</b>	<b>(1,204,465)</b>	<b>(483,965)</b>	<b>-</b>
Beginning Fund Balance	2,600,488	2,745,654	2,745,654	2,745,654	2,261,689
Ending Fund Balance	<b>\$ 2,745,654</b>	<b>\$ 2,745,654</b>	<b>\$ 1,541,189</b>	<b>\$ 2,261,689</b>	<b>\$ 2,261,689</b>

The Capital Projects Fund is used to account for financial resources and related financial activity for the acquisition and improvement of sites and for the acquisitions, construction, equipping and renovation of buildings.

\* Actual is represented on a budgetary basis.

\*\* Estimate is based upon 9 months actual and 3 months estimate.

**DEBT SERVICE FUND**

2015-16 BUDGETARY STATEMENT OF  
RESOURCES, USES AND CHANGES IN FUND BALANCE

lege, 1001 S Main Street, Racine, Wisconsin. A detailed budget is available for public inspection at the Administration Center, Kenosha Ca

	2013-14 ACTUAL*	2014-15 ADOPTED BUDGET	2014-15 MODIFIED BUDGET	2014-15 ESTIMATE**	2015-16 BUDGET
<b>REVENUES</b>					
Local Government	\$ 8,882,000	\$ 9,600,000	\$ 9,600,000	\$ 9,600,000	\$ 10,316,000
Institutional	5,092	5,000	5,000	5,000	5,000
<b>TOTAL REVENUE</b>	<u>8,887,092</u>	<u>9,605,000</u>	<u>9,605,000</u>	<u>9,605,000</u>	<u>10,321,000</u>
<b>EXPENDITURES</b>					
Physical Plant	8,989,037	9,800,000	9,800,000	9,675,000	10,415,000
<b>TOTAL EXPENDITURES</b>	<u>8,989,037</u>	<u>9,800,000</u>	<u>9,800,000</u>	<u>9,675,000</u>	<u>10,415,000</u>
Net Revenue (Expenditures)	(101,945)	(195,000)	(195,000)	(70,000)	(94,000)
<b>OTHER SOURCES (USES)</b>					
Proceeds from Debt	381,404	315,000	315,000	1,725,000	255,000
Payment to Refunded Bond Escrow Agent	-	-	-	(1,320,551)	-
Operating Transfer In (Out)	-	-	-	-	-
<b>TOTAL RESOURCES (USES)</b>	<u>279,459</u>	<u>120,000</u>	<u>120,000</u>	<u>334,449</u>	<u>161,000</u>
<b>TRANSFERS TO (FROM) FUND BALANCE</b>					
Reserve for Debt Service	279,459	120,000	120,000	334,449	161,000
<b>TOTAL TRANSFERS TO (FROM) FUND BALANCE</b>	<u>279,459</u>	<u>120,000</u>	<u>120,000</u>	<u>334,449</u>	<u>161,000</u>
Beginning Fund Balance	1,687,340	1,966,799	1,966,799	1,966,799	2,301,248
<b>Ending Fund Balance</b>	<u>\$ 1,966,799</u>	<u>\$ 2,086,799</u>	<u>\$ 2,086,799</u>	<u>\$ 2,301,248</u>	<u>\$ 2,462,248</u>

The Debt Service Fund is used to account for the accumulation of resources for, and payment of, general long-term debt principal and interest.

\* Actual is represented on a budgetary basis.

\*\* Estimate is based upon 9 months actual and 3 months estimate.



**ENTERPRISE FUND**

2015-16 BUDGETARY STATEMENT OF  
RESOURCES, USES AND CHANGES IN FUND BALANCE

College, 1001 S Main Street, Racine, Wisconsin. A detailed budget is available for public inspection at the Administration Cent

	2013-14 ACTUAL*	2014-15 ADOPTED BUDGET	2014-15 MODIFIED BUDGET	2014-15 ESTIMATE**	2015-16 BUDGET
<b>REVENUES</b>					
Local Government	\$ 45,000	\$ 45,000	\$ 45,000	\$ 45,000	\$ 45,000
Other Student Fees	201,539	260,000	260,000	255,000	300,000
Institutional	284,570	295,000	295,000	290,000	355,000
Federal	-	-	-	-	-
<b>TOTAL REVENUE</b>	<u>531,109</u>	<u>600,000</u>	<u>600,000</u>	<u>590,000</u>	<u>700,000</u>
<b>EXPENDITURES</b>					
Auxiliary Services	440,292	600,000	600,000	590,000	700,000
<b>TOTAL EXPENDITURES</b>	<u>440,292</u>	<u>600,000</u>	<u>600,000</u>	<u>590,000</u>	<u>700,000</u>
Net Revenue (Expenditures)	90,817	-	-	-	-
<b>OTHER SOURCES (USES)</b>					
Residual Equity Transfer In (Out)	-	-	-	-	-
Operating Transfer In (Out)	-	-	-	-	-
<b>TOTAL RESOURCES (USES)</b>	<u>90,817</u>	<u>-</u>	<u>-</u>	<u>-</u>	<u>-</u>
<b>TRANSFERS TO (FROM) FUND BALANCE</b>					
Retained Earnings	90,817	-	-	-	-
<b>TOTAL TRANSFERS TO (FROM) FUND BALANCE</b>	<u>90,817</u>	<u>-</u>	<u>-</u>	<u>-</u>	<u>-</u>
Beginning Fund Balance	832,023	922,840	922,840	922,840	922,840
Ending Fund Balance	<u>\$ 922,840</u>	<u>\$ 922,840</u>	<u>\$ 922,840</u>	<u>\$ 922,840</u>	<u>\$ 922,840</u>

Enterprise Funds are used to account for operations where the costs of providing goods or services to the student body, faculty and staff, or the general public are financed primarily through user fees.

\* Actual is represented on a budgetary basis.

\*\* Estimate is based upon 9 months actual and 3 months estimate.

**COMBINED FUND SUMMARY**

JULY 1, 2015 - JUNE 30, 2016

BUDGETARY STATEMENT OF

RESOURCES, USES AND CHANGES IN FUND BALANCE

lege, 1001 S Main Street, Racine, Wisconsin. A detailed budget is available for public inspection at the Administration Center, Kenosha Campus

	2013-14 ACTUAL*	2014-15 ADOPTED BUDGET	2014-15 MODIFIED BUDGET	2014-15 ESTIMATE**	2015-16 BUDGET
<b>REVENUES</b>					
Local Government - Tax Levy	\$ 60,150,673	\$ 28,981,083	\$ 28,778,925	\$ 28,778,925	\$ 29,910,288
Local Government - City/County	-	-	-	77,364	99,930
State Aids	8,825,074	42,748,039	42,950,197	42,151,782	42,376,604
Other State Aids	-	165,000	165,000	165,000	165,000
Program Fees	16,376,974	17,034,937	17,034,937	15,672,142	15,922,142
Material Fees	764,658	797,467	797,467	733,670	755,680
Other Student Fees	2,854,904	3,199,974	3,199,974	2,973,736	3,190,172
Institutional	8,604,455	9,630,000	9,630,000	9,088,246	9,844,417
Federal	36,900,474	40,588,000	40,588,000	32,221,490	34,745,902
<b>TOTAL REVENUE</b>	<b>134,477,212</b>	<b>143,144,500</b>	<b>143,144,500</b>	<b>131,862,355</b>	<b>137,010,135</b>
<b>EXPENDITURES</b>					
Instruction	58,342,168	61,487,136	61,330,136	58,727,892	60,021,182
Instructional Resources	1,181,202	1,271,370	1,271,370	1,239,581	1,245,851
Student Services	50,724,626	56,142,749	57,079,749	48,220,699	51,605,234
General Institutional	9,837,882	11,200,783	11,254,783	10,501,363	11,721,655
Physical Plant	24,908,003	25,662,962	26,813,427	26,505,150	23,447,113
Auxiliary Services	440,292	600,000	600,000	590,000	700,000
Public Service	357,437	395,000	395,000	390,000	363,100
<b>TOTAL EXPENDITURES</b>	<b>145,791,610</b>	<b>156,760,000</b>	<b>158,744,465</b>	<b>146,174,685</b>	<b>149,104,135</b>
<b>NET REVENUE (EXPENDITURES)</b>	<b>(11,314,398)</b>	<b>(13,615,500)</b>	<b>(15,599,965)</b>	<b>(14,312,330)</b>	<b>(12,094,000)</b>
<b>OTHER SOURCES (USES)</b>					
Proceeds From Debt	11,381,404	13,315,000	13,315,000	14,725,000	12,255,000
Payments to Bond Escrow Agent	-	-	-	(1,320,551)	-
<b>TOTAL RESOURCES (USES)</b>	<b>67,006</b>	<b>(300,500)</b>	<b>(2,284,965)</b>	<b>(907,881)</b>	<b>161,000</b>
<b>TRANSFERS TO (FROM) FUND BALANCE</b>					
Reserve for Operations	(729,135)	(420,500)	(620,500)	(191,365)	-
Reserve for Capital Projects	145,166	-	(1,204,465)	(483,965)	-
Reserve for Debt Service	279,459	120,000	120,000	334,449	161,000
Reserve for Other Post Employment Benefits	-	-	380,000	380,000	-
Reserve for Prepaid Expense	-	-	-	(130,086)	-
Retained Earnings	90,817	-	-	-	-
Reserved for Student Financial Asst/Organizations	280,699	-	-	13,000	-
Due to Others	-	-	-	-	-
Designated for Subsequent Year	-	-	(960,000)	(960,000)	-
<b>TOTAL TRANSFERS TO (FROM) FUND BALANCE</b>	<b>67,006</b>	<b>(300,500)</b>	<b>(2,284,965)</b>	<b>(1,037,967)</b>	<b>161,000</b>
Beginning Fund Balance	35,026,737	35,093,743	35,093,743	35,093,743	34,055,776
Ending Fund Balance	35,093,743	34,793,243	32,808,778	34,055,776	34,216,776
<b>EXPENDITURES BY FUND</b>					
General Fund	74,689,932	79,245,000	79,445,000	77,612,918	77,858,865
Special Revenue Operational Fund	6,484,181	9,221,000	9,221,000	7,608,802	7,956,270
Special Revenue Non-Aidable Fund	40,708,333	44,504,000	44,504,000	36,259,000	39,934,000
Capital Projects Fund	14,479,835	13,390,000	15,174,465	14,428,965	12,240,000
Debt Service Fund	8,989,037	9,800,000	9,800,000	9,675,000	10,415,000
Enterprise Fund	440,292	600,000	600,000	590,000	700,000
<b>TOTAL EXPENDITURES BY FUND</b>	<b>\$145,791,610</b>	<b>\$156,760,000</b>	<b>\$158,744,465</b>	<b>\$146,174,685</b>	<b>\$149,104,135</b>

\* Actual is presented on a budgetary basis.

\*\* Estimated is based upon 9 months actual and 3 months estimate.

## Gateway Technical College Equalized Valuations and Mill Rates

Fund	Actual 2011-12	% Change	Actual 2012-13	% Change	Actual 2013-14	% Change	Actual 2014-15	% Change	Budget 2015-16	% Change
General	\$48,830,000	0.0%	\$48,830,000	0.0%	\$48,830,000	0.0%	\$17,047,925	-65.1%	\$17,500,083	2.7%
Special Revenue - Operational	2,286,000	0.0%	2,286,000	0.0%	2,286,000	0.0%	2,086,000	-8.7%	2,049,205	-1.8%
Special Revenue - Non Aidable	0	0.0%	0	0.0%	0	0.0%	0	0.0%	0	0.0%
Enterprise	45,000	0.0%	45,000	0.0%	45,000	0.0%	45,000	0.0%	45,000	0.0%
<b>Operational Tax Levy</b>	<b>51,161,000</b>	<b>0.00%</b>	<b>51,161,000</b>	<b>0.00%</b>	<b>51,161,000</b>	<b>0.00%</b>	<b>19,178,925</b>	<b>-62.51%</b>	<b>19,594,288</b>	<b>2.17%</b>
Debt Service	7,734,000	7.76%	8,275,000	7.00%	8,882,000	7.34%	9,600,000	8.08%	10,316,000	7.46%
<b>Total Tax Levy</b>	<b>\$58,895,000</b>	<b>0.95%</b>	<b>\$59,436,000</b>	<b>0.92%</b>	<b>\$60,043,000</b>	<b>1.02%</b>	<b>\$28,778,925</b>	<b>-52.07%</b>	<b>\$29,910,288</b>	<b>3.93%</b>
<b>Mill Rates</b>										
Operations	1.24443	2.0%	1.33999	7.7%	1.39289	3.9%	0.51335	-63.1%	0.52447	2.2%
Debt Service	0.18812	9.9%	0.21673	15.2%	0.24182	11.6%	0.25696	6.3%	0.27612	7.5%
<b>Total Mill Rate</b>	<b>1.43255</b>	<b>2.98%</b>	<b>1.55672</b>	<b>8.67%</b>	<b>1.63471</b>	<b>5.01%</b>	<b>0.77031</b>	<b>-52.88%</b>	<b>0.80059</b>	<b>3.93%</b>
<b>Property Values</b>										
Equalized Valuation - Taxable	\$41,111,928,678	-1.96%	\$38,180,224,464	-7.13%	\$36,730,173,803	-3.80%	\$37,360,066,597	1.72%	\$37,360,066,597	0.00%
Value of Tax Exempt Computers <sup>(1)</sup>	\$115,543,100	-6.5%	\$103,779,427	-10.2%	\$98,700,900	-4.9%	\$105,064,500	6.4%	\$105,064,500	0.0%
State Aid for Exempt Computers	\$165,522	-3.7%	\$161,556	-2.4%	\$161,347	-0.1%	\$80,932	-49.8%	\$80,932	0.0%

<sup>(1)</sup> Wisconsin Act 237 exempted business computers from being subject to property taxes beginning with the FY 2000 tax levy. The act calls for state aid to offset the loss of property tax revenue.

**GATEWAY TECHNICAL COLLEGE DISTRICT BOARD**

Roll Call        X    
Action                    
Information              
Discussion             

**RESOLUTION NO. F-2015-2016A.1**  
**RESOLUTION AUTHORIZING THE ISSUANCE OF \$8,000,000**  
**GENERAL OBLIGATION PROMISSORY NOTES, SERIES F-2015-2016A**

Summary of Item:            Administration is recommending approval to issue General Obligation Promissory Notes, Series F-2015-2016A; in the principal amount of \$8,000,000; \$1,500,000 for the public purpose of financing building remodeling and improvement projects; \$6,500,000 for the public purpose of financing the acquisition of movable equipment. This borrowing is included in the 2015-16 budget. Upon approval, appropriate legal notices will be published in the official district newspapers.

Attachments:                Resolution No. F-2015-2016A.1

Ends Statements and/or  
Executive Limitations:    Section 3 - Executive Limitations  
   Policy 3.5 - Financial Condition

Staff Liaison:              Bane Thomey

**ROLL CALL**

Ram Bhatia                            
William Duncan                      
Ronald J. Frederick                 
Susan Greenfield                    
Bethany Ormseth                     
Scott Pierce                          
Roger Zacharias                     
Pamela Zenner-Richards            
Gary Olsen

Resolution No. F-2015-2016A.1

RESOLUTION AUTHORIZING THE ISSUANCE OF \$8,000,000  
GENERAL OBLIGATION PROMISSORY NOTES, SERIES 2015-2016A, OF  
GATEWAY TECHNICAL COLLEGE DISTRICT, WISCONSIN

WHEREAS, Gateway Technical College District, Wisconsin (the “District”) is presently in need of \$1,500,000 for the public purpose of financing building remodeling and improvement projects and \$6,500,000 for the public purpose of financing the acquisition of movable equipment; and

WHEREAS, the District Board deems it necessary and in the best interest of the District to borrow the monies needed for such purposes through the issuance of general obligation promissory notes pursuant to the provisions of Section 67.12(12), Wis. Stats.;

NOW, THEREFORE, BE IT:

RESOLVED, that the District shall issue general obligation promissory notes in the amount of \$1,500,000 for the public purpose of financing building remodeling and improvement projects; and be it further

RESOLVED, that the District shall issue general obligation promissory notes in the amount of \$6,500,000 for the public purpose of financing the acquisition of movable equipment; and be it further

RESOLVED, THAT:

Section 1. Note Authorization. The District shall issue the general obligation promissory notes authorized above in the aggregate principal amount of \$8,000,000 and designated “General Obligation Promissory Notes, Series 2015-2016A” (the “Notes”), the proceeds of which shall be used for the purposes specified above in the amounts authorized for those purposes.

Section 2. Notice to Electors. The District Secretary shall, within ten (10) days hereafter, cause public notice of the adoption of these resolutions to be given to the electors of the District by publishing notices thereof in the Elkhorn Independent, Kenosha News and Journal Times, the official District newspapers published and having general circulation in the District, which newspapers are found and determined to be likely to give notice to the electors, such notices to be in substantially the forms set forth on Exhibits A and B hereto.

Section 3. Official Statement. The District Secretary shall cause an Official Statement to be prepared by Robert W. Baird & Co. Incorporated. The appropriate District officials shall determine when the Official Statement is final for purposes of Securities and Exchange Commission Rule 15c2-12 and shall certify said Statement, such certification to constitute full authorization of such Official Statement under this resolution.

Adopted this 14th day of May, 2015.

---

Gary Olsen  
Chairperson

Attest:

---

Ronald J. Frederick  
Secretary

EXHIBIT A

NOTICE

TO THE ELECTORS OF:

Gateway Technical College  
District, Wisconsin

NOTICE IS HEREBY GIVEN that the District Board of the above-named District, at a meeting duly called and held on May 14, 2015, adopted pursuant to the provisions of Section 67.12(12) of the Wisconsin Statutes, a resolution providing that the sum of \$1,500,000 be borrowed through the issuance of general obligation promissory notes of the District for the public purpose of financing building remodeling and improvement projects.

A copy of said resolution is on file in the District Office, 3520 30th Avenue, Kenosha, Wisconsin, and is available for public inspection weekdays, except holidays, between the hours of 8:00 A.M. and 4:00 P.M.

The District Board need not submit said resolution to the electors for approval unless within 30 days after the publication of this Notice there is filed with the Secretary of the District Board a petition meeting the standards set forth in Sec. 67.12(12)(e)5, Wis. Stats., requesting a referendum thereon at a special election.

Dated May 14, 2015.

BY ORDER OF THE DISTRICT BOARD

District Secretary

EXHIBIT B

NOTICE

TO THE ELECTORS OF:

Gateway Technical College  
District, Wisconsin

NOTICE IS HEREBY GIVEN that the District Board of the above-named District, at a meeting duly called and held on May 14, 2015, adopted pursuant to the provisions of Section 67.12(12) of the Wisconsin Statutes, a resolution providing that the sum of \$6,500,000 be borrowed through the issuance of general obligation promissory notes of the District for the public purpose of financing the acquisition of movable equipment.

A copy of said resolution is on file in the District Office, 3520 30th Avenue, Kenosha, Wisconsin, and is available for public inspection weekdays, except holidays, between the hours of 8:00 A.M. and 4:00 P.M.

The District Board need not submit said resolution to the electors for approval unless within 30 days after the publication of this Notice there is filed with the Secretary of the District Board a petition meeting the standards set forth in Sec. 67.12(12)(e)5, Wis. Stats., requesting a referendum thereon at a special election.

Dated May 14, 2015.

BY ORDER OF THE DISTRICT BOARD

District Secretary



XI. BOARD MEMBER COMMUNITY REPORTS

XII. NEXT MEETING DATE AND ADJOURN

- A. Regular Meeting - Thursday, June 18, 2015, 8:00 am, Kenosha
- B. Adjourn – Following the regular meeting, the Gateway Technical College District Board will meet in executive session pursuant to Wisconsin Statutes 19.85(1)(c) to discuss the President's evaluation and personnel issues. The Board reserves the right to reconvene in open session to take action on items discussed in executive session.

ROLL CALL

Ram Bhatia	_____
William Duncan	_____
Ronald J. Frederick	_____
Susan Greenfield	_____
Bethany Ormseth	_____
Scott Pierce	_____
Roger Zacharias	_____
Pamela Zenner-Richards	_____
Gary Olsen	_____