

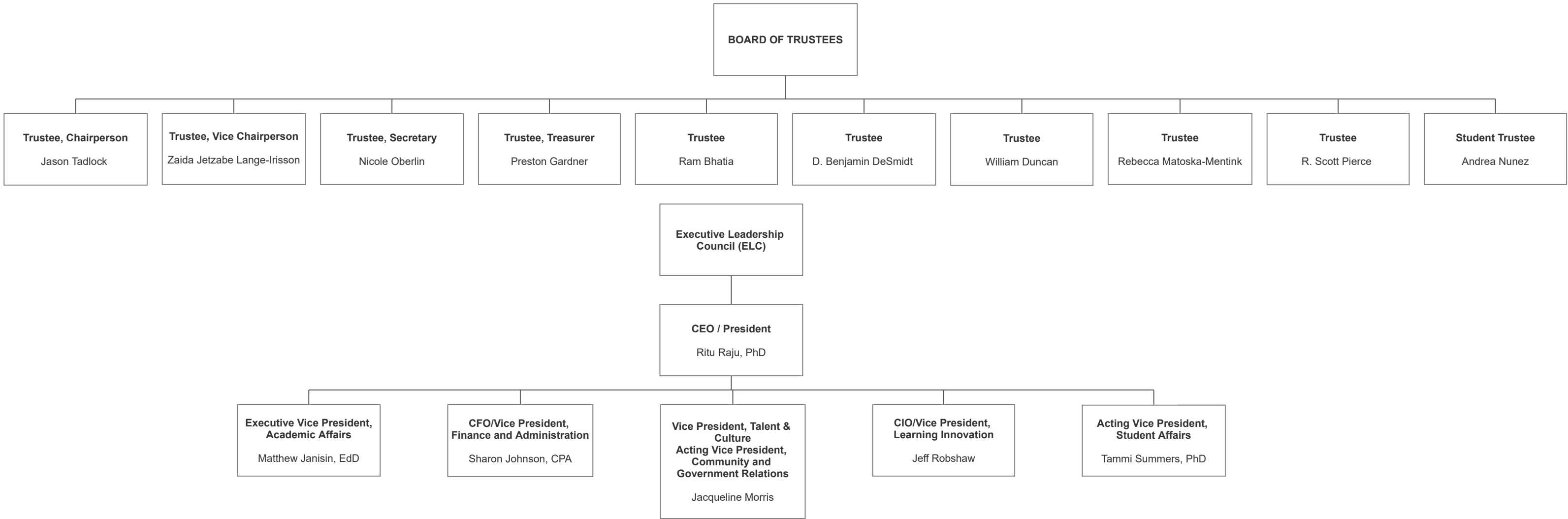
GATEWAY TECHNICAL COLLEGE ORGANIZATIONAL CHART

March 2025

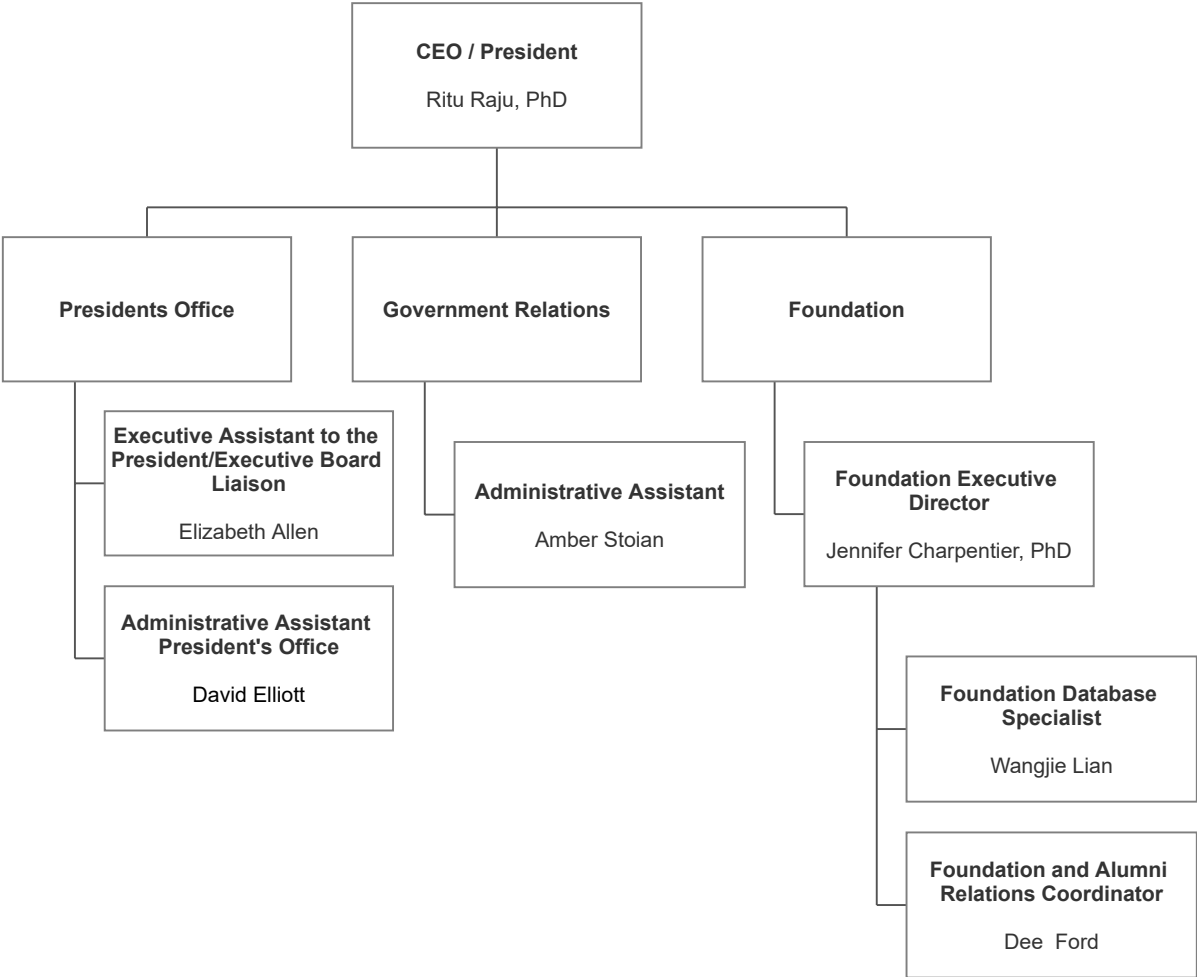
TABLE OF CONTENTS

Board of Trustees & Executive Leadership Council		
President's Office		
Business Office		
Facilities and Security		
Talent & Culture		
Student Affairs - Student Support Services		
Marketing and Communications		
Institutional Effectiveness		
Library		
Learning Innovation		
Business and Workforce Solutions		
Student Affairs - Student Support Services		
Student Affairs - Elkhorn, Kenosha, Racine		
Campus Affairs		
Academic Operations		
Academic Affairs		
School of Pre-College and Momentum Programs		
School of Liberal Arts and Sciences		
School of Business and Transportation		
School of Health		
School of Manufacturing, Engineering and Informational Technology		
School of Protective and Human Services		

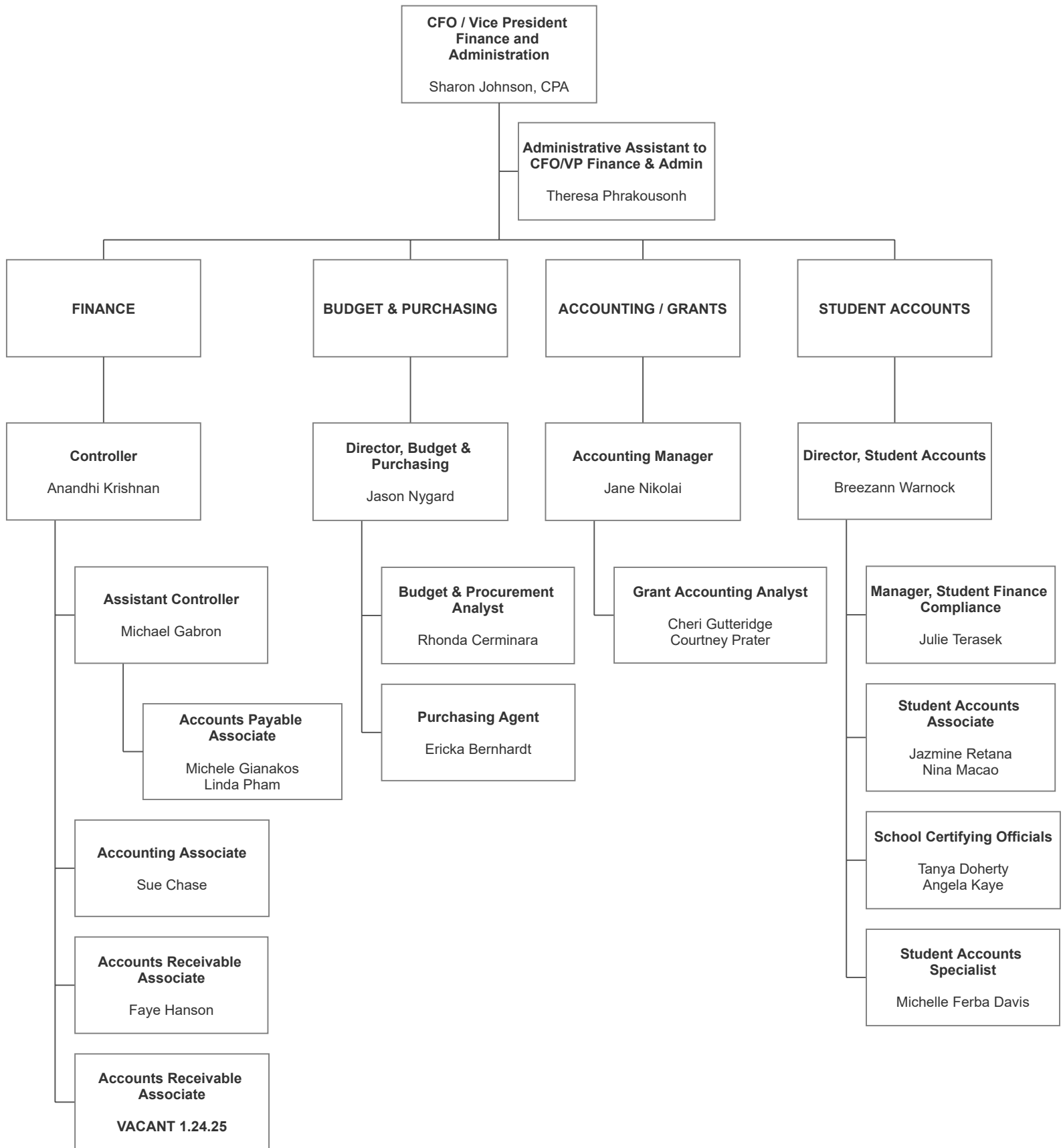
**BOARD OF TRUSTEES
AND
EXECUTIVE LEADERSHIP COMMITTEE**



PRESIDENT'S OFFICE



BUSINESS OFFICE

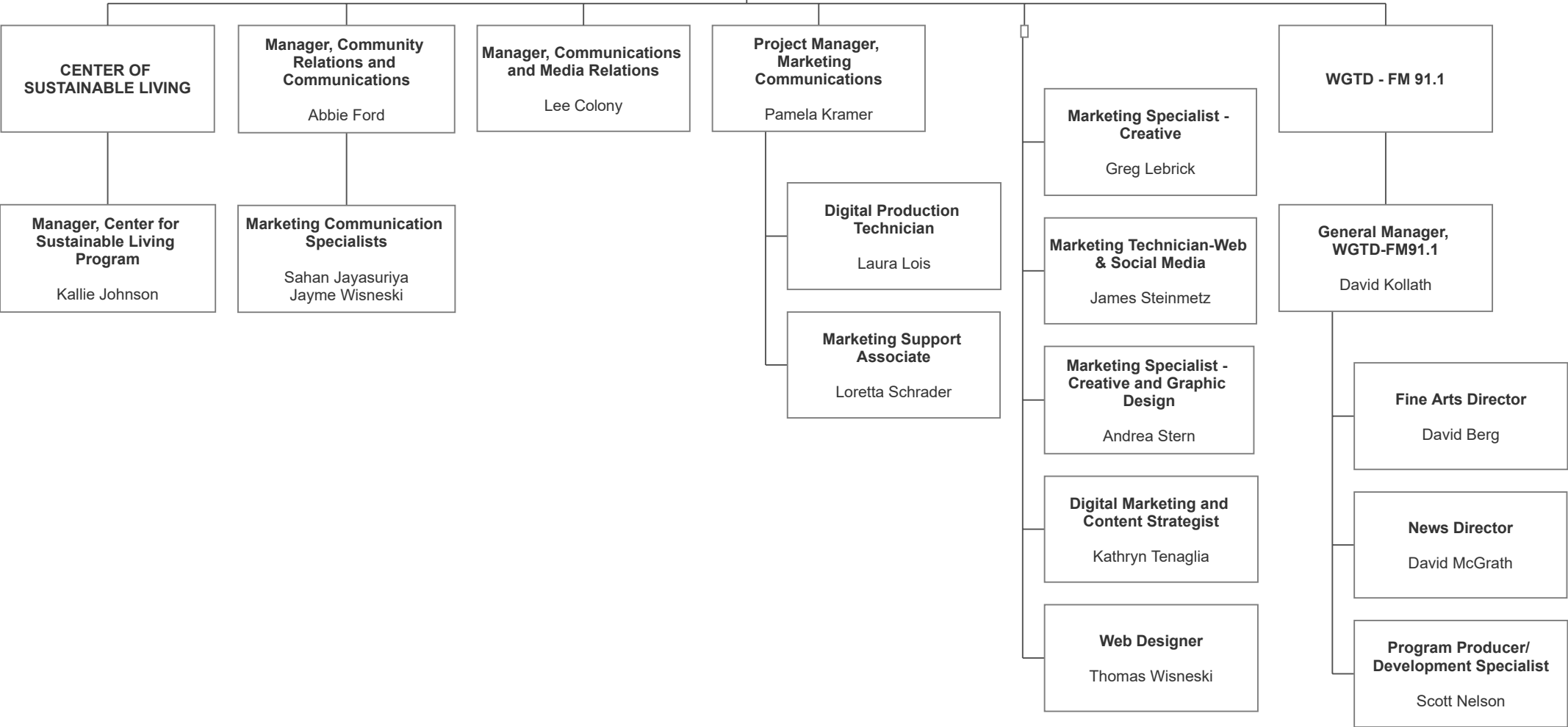


MARKETING AND COMMUNICATIONS

**Acting Vice President,
Marketing and
Communications**
Jacqueline Morris

**Director, Marketing and
Communications**
Kristin Gunia

**Marketing and
Communication Associate**
Blanca Villarreal



STUDENT AFFAIRS - STUDENT SUPPORT SERVICES

**Acting Vice President,
Student Affairs**
Tammi Summers, PhD

Administrative Assistant
Erika Saylor

COMPLIANCE

Director, Compliance
Josh Vollendorf

TRIO PROGRAM

Director, TRIO Support Services
Stacey Malacara

TRIO Support Specialist
Allie Rainey

INCLUSIVE EXCELLENCE

Director, Inclusive Excellence
Jomarie Coloriano

Student Support Specialists
Danyanna Dunn (Multicultural)
Desmar McDuffie (Multicultural)
Edwardo Vargas, III (Veterans)
Laura Voynovich (NTO)

HISPANIC STUDENT PROGRAMMING

Director, Hispanic Student Programming
Elizabeth Rosiles-Zavala

MEN OF COLOR

Director, Men of Color Programming
Samuel Lopez

Success Coach Men of Color
Francisco Navarro

STUDENT ACCOMMODATIONS & ACCESSIBILITY SERVICES

Director, Accessibility and Counseling Services
Katie Lohre

Accommodations and Accessibility Coordinators

Patty Nesheim (Elk/Bur)
Samantha Kleczka (Ken)
David Mahdasian (Ken)
Jamie Kauppila (Rac)
Jonathan Watson (Rac)

Transition Resource and Accessibility Coach

Daniel Peterson

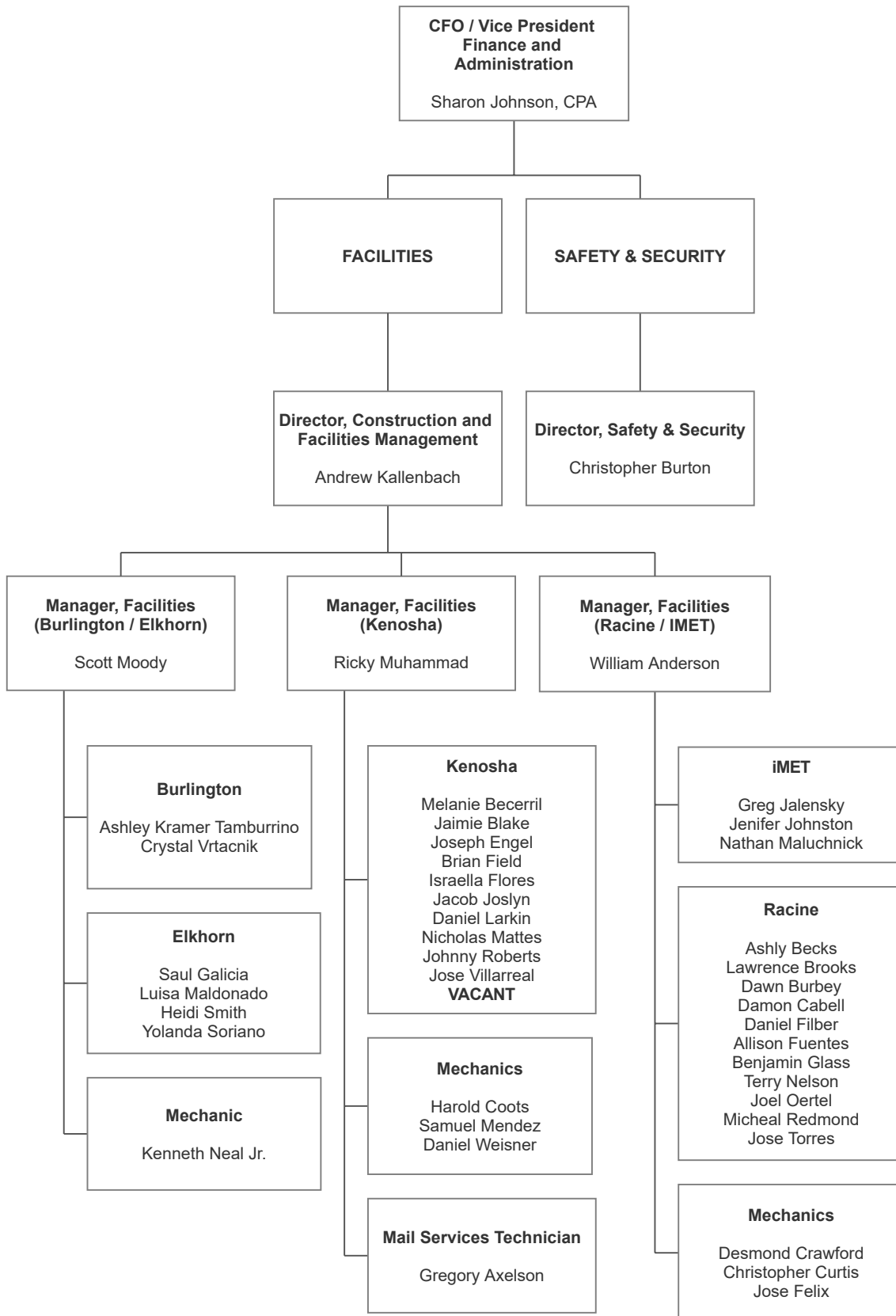
Deaf and Hard of Hearing Support Specialist

Lisa Sadowski

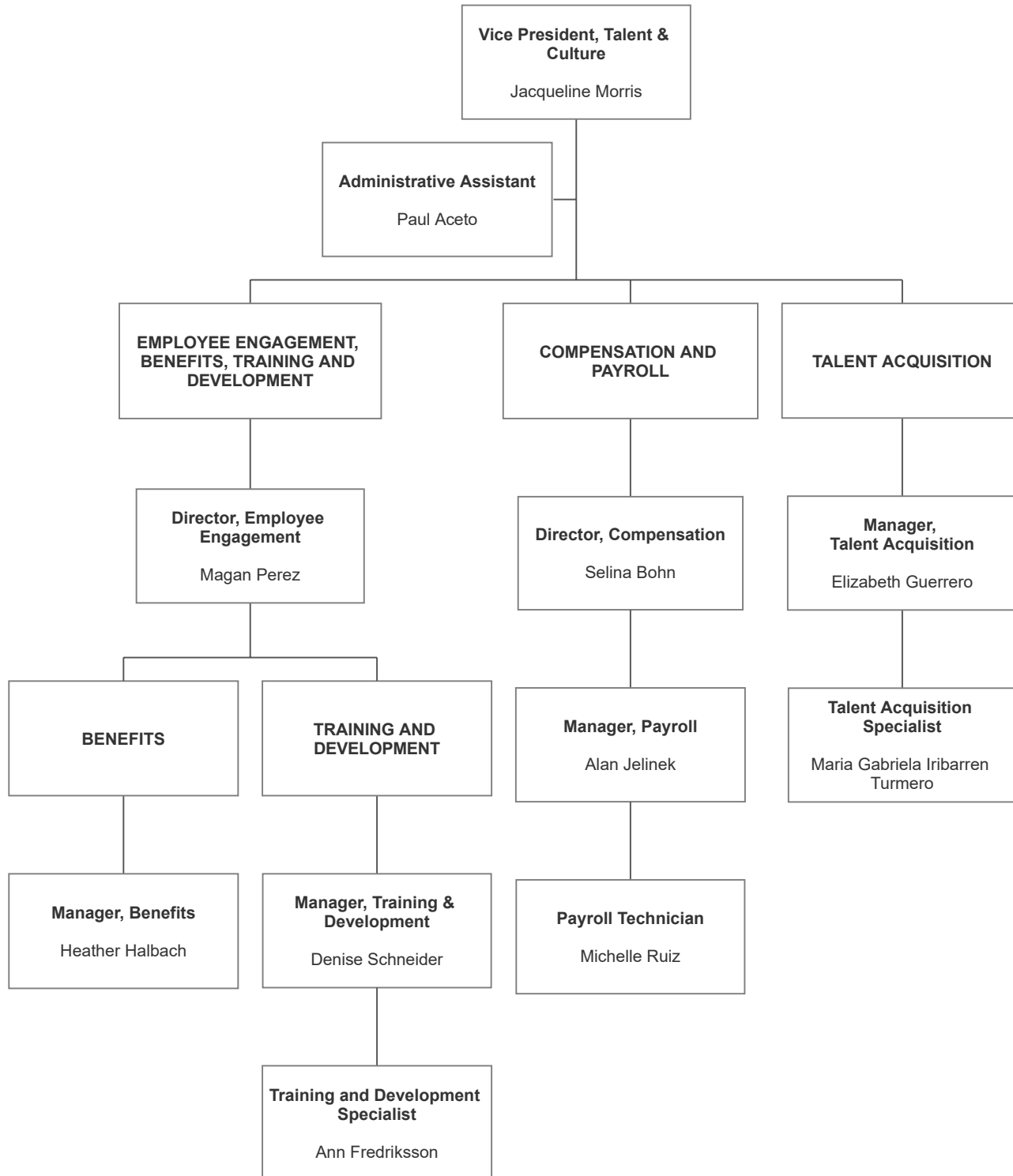
Student Support Counselors

Ann Grossman
Brandon Hutchins (MoC)
Krystal DeLeon
Michael Kegel (TRIO)
Christine Sanchez

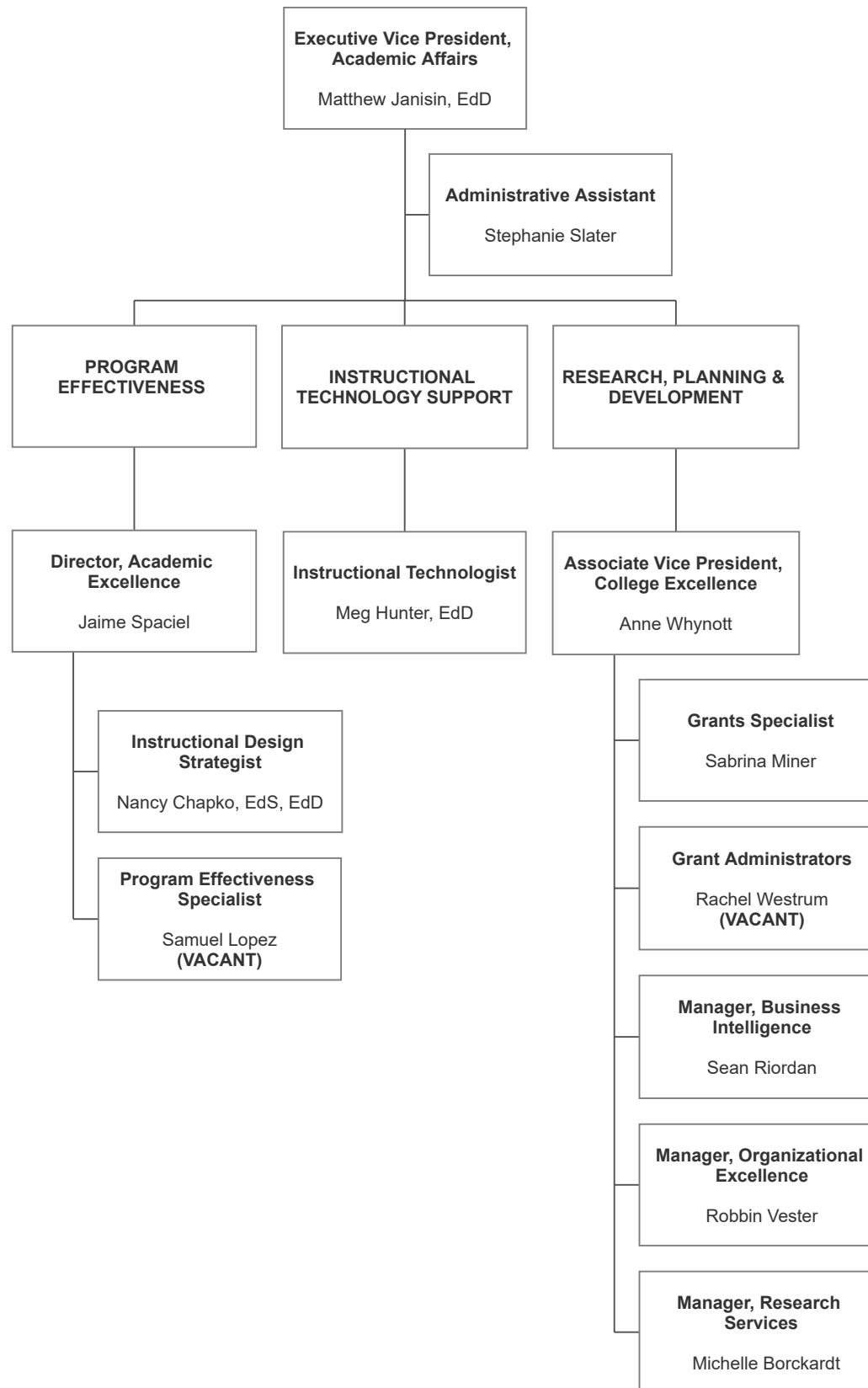
FACILITIES AND SECURITY



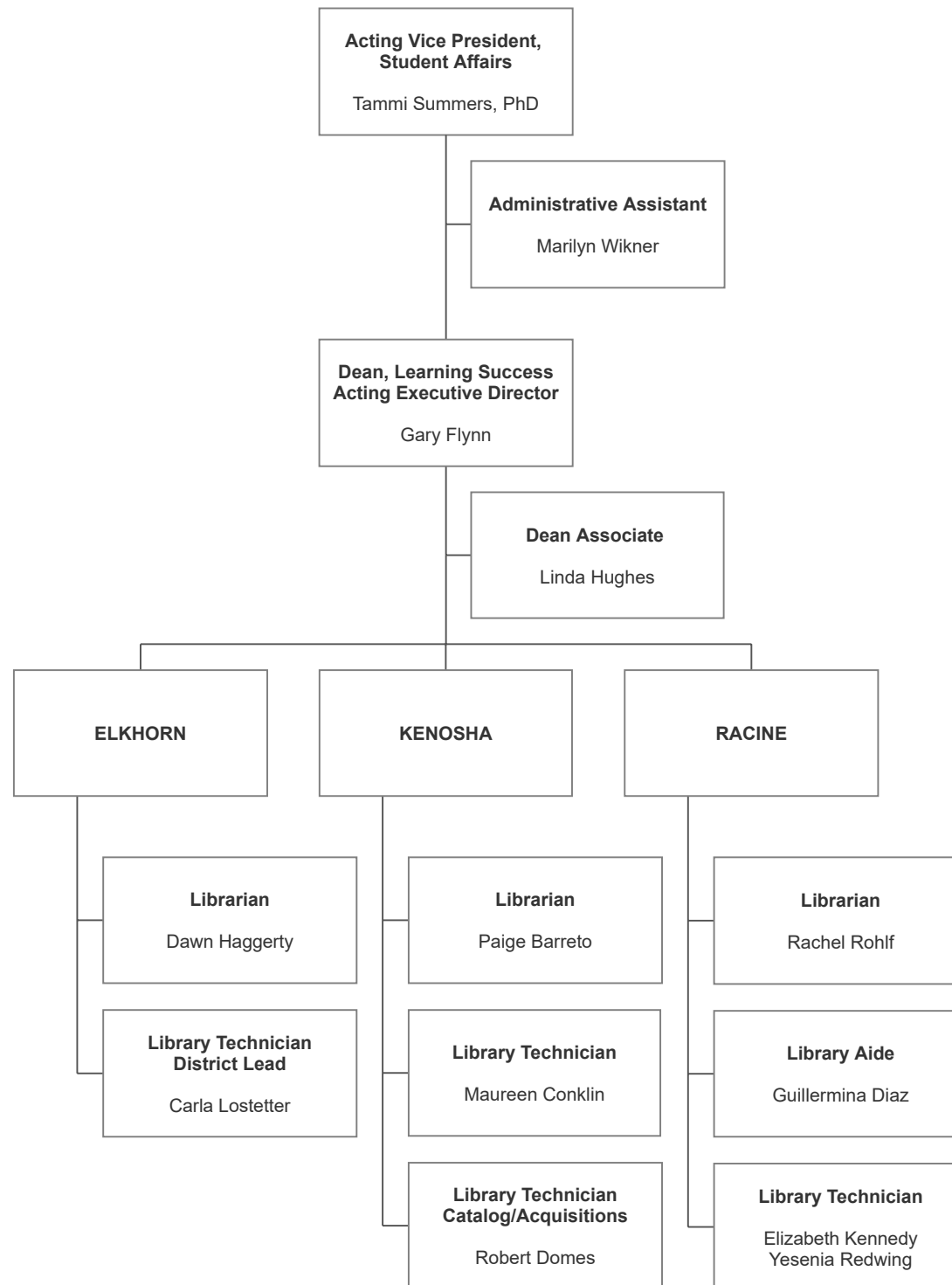
TALENT & CULTURE



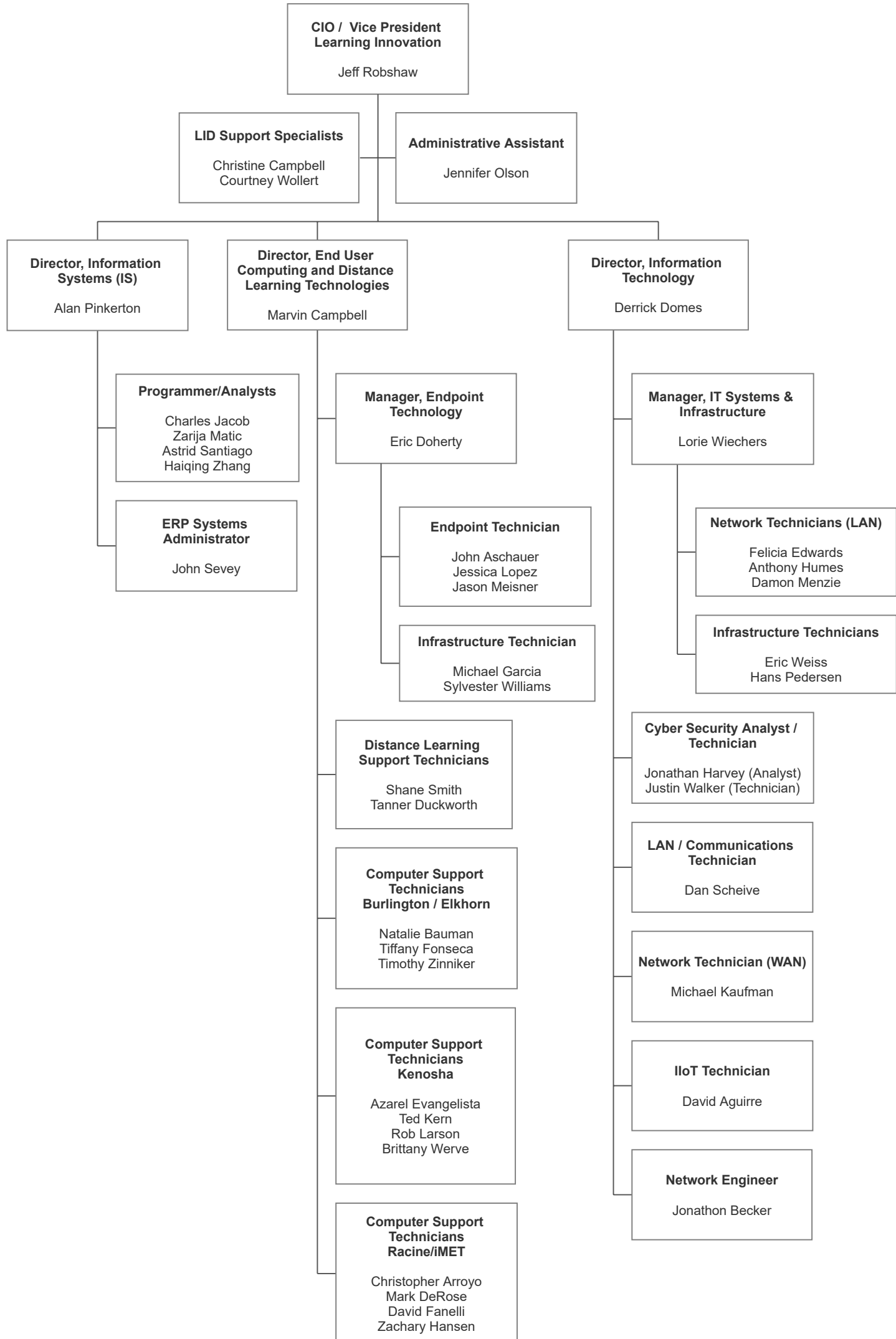
INSTITUTIONAL EFFECTIVENESS



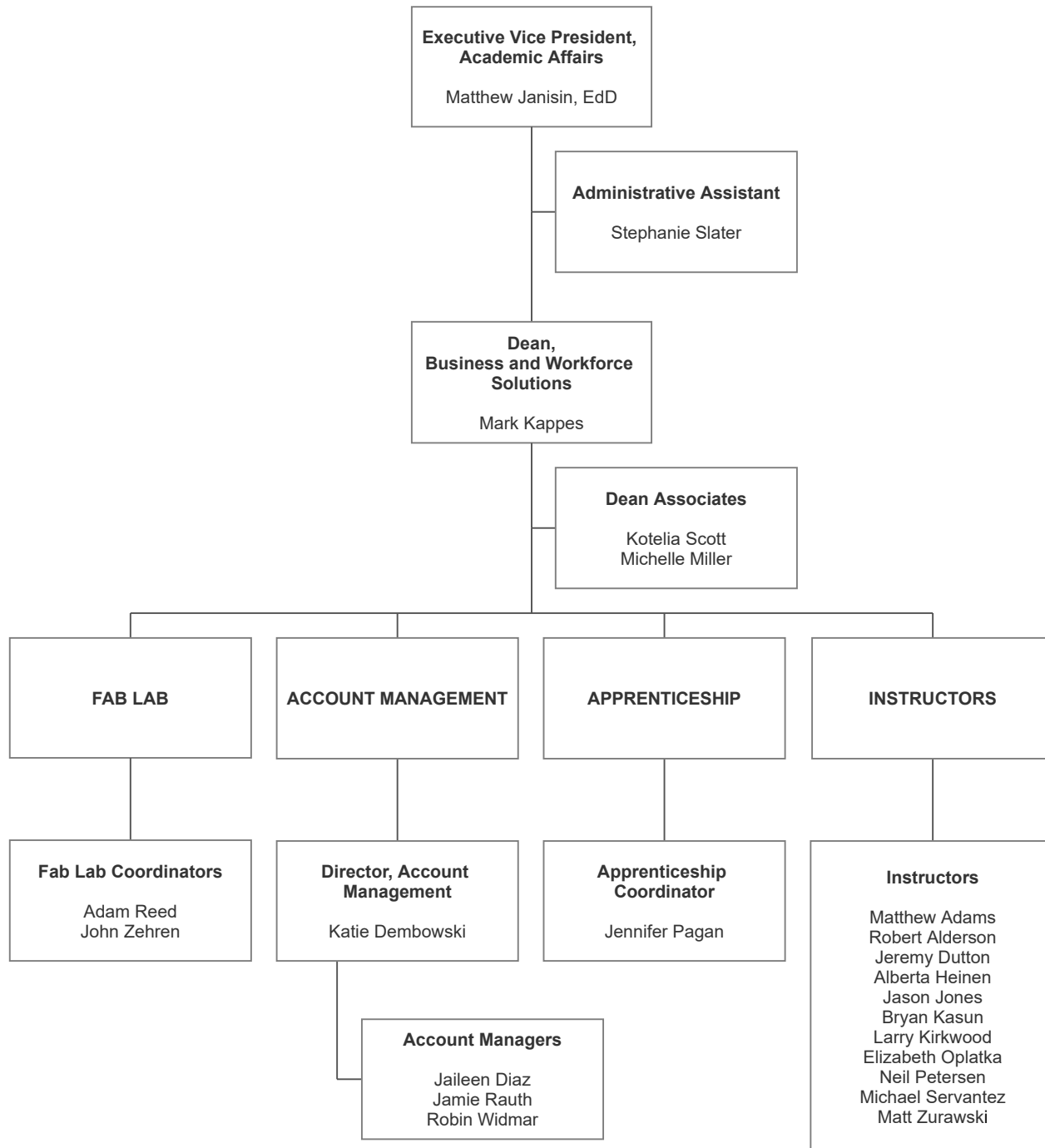
LIBRARY



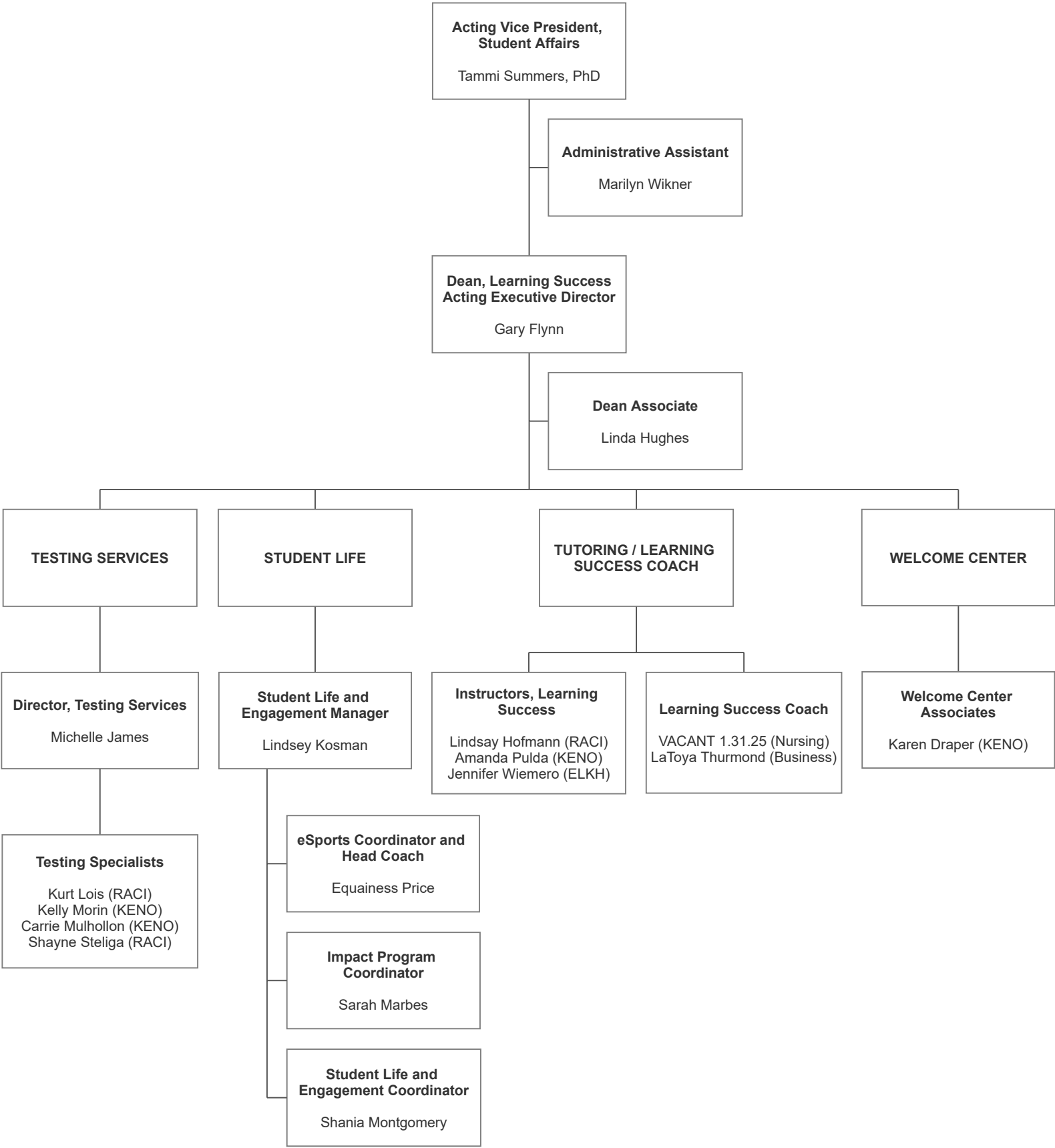
LEARNING INNOVATION DIVISION



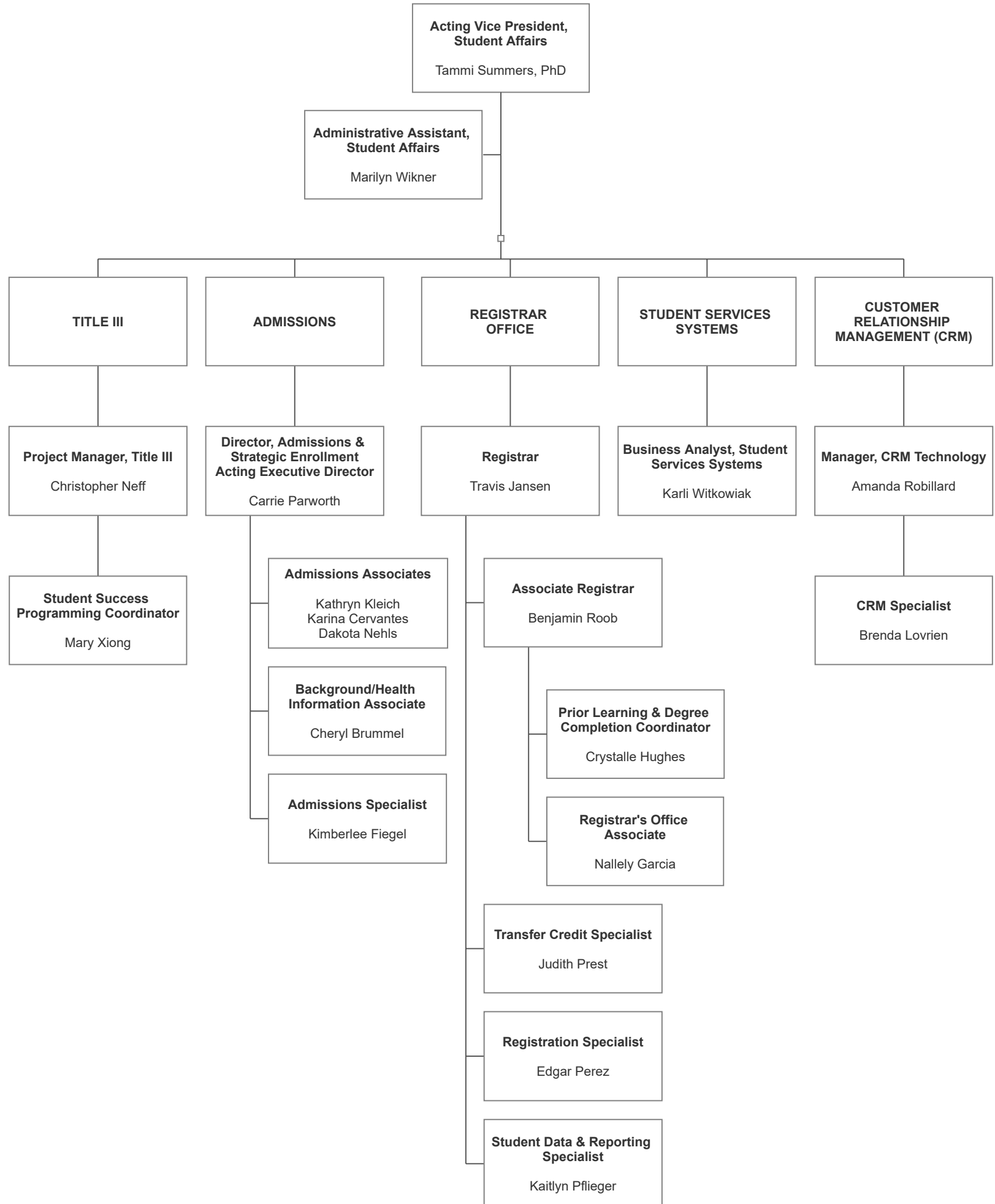
BUSINESS AND WORKFORCE SOLUTIONS



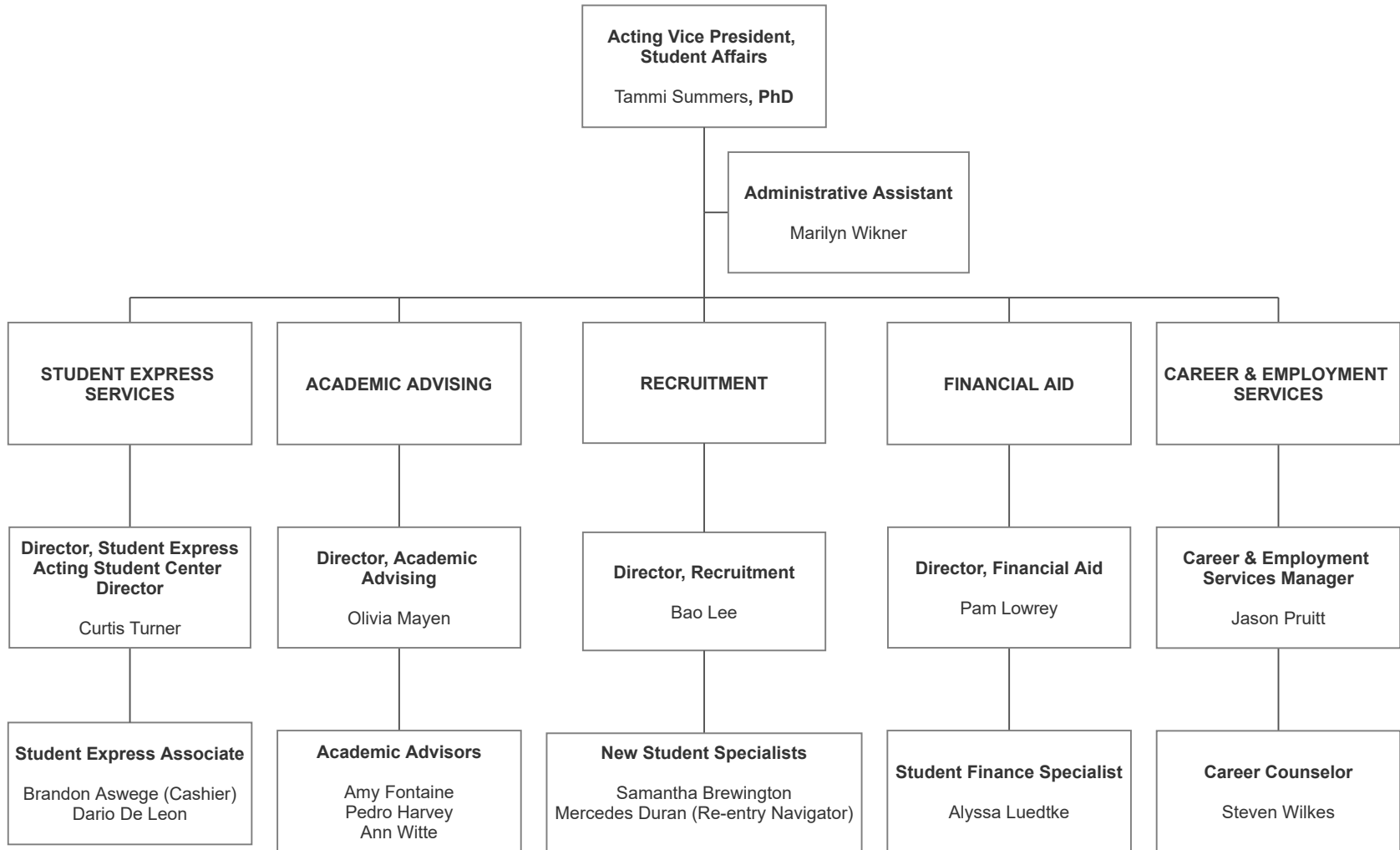
STUDENT AFFAIRS - LEARNING SUCCESS CENTER



STUDENT AFFAIRS - STUDENT SUPPORT SERVICES



STUDENT AFFAIRS - STUDENT SERVICES CENTER (ELKHORN)



STUDENT AFFAIRS - STUDENT SERVICES CENTER (KENOSHA)

**Acting Vice President,
Student Affairs**
Tammi Summers, PhD

Administrative Assistant
Marilyn Wikner

**STUDENT EXPRESS
SERVICES**

ACADEMIC ADVISING

RECRUITMENT

FINANCIAL AID

**CAREER AND
EMPLOYMENT SERVICES**

Director, Student Express
Curtis Turner

**Director, Student Services
Center**
Tanya Burton

**Director, Academic
Advising**
Olivia Mayen

Director, Recruitment
Bao Lee

Director, Financial Aid
Pam Lowrey

**Career & Employment
Services Manager**
Jason Pruitt

**Student Express
Associates**

Marilyn Gonzalez (Cashier)
Maria Reynoso

**Contact Center
Associates**

Stacy Ericson
Kashawneda Lee
Christine Nielsen
Pamela Schuster

Academic Advisors

Cynthia Beltran
Kevin Gerou
Ken Loftus
Maria Osmundsen
Maria Perez
Yoceline Vargas

New Student Specialists

Deborah Joling
Andrew Laird
Gabriela Leon

**Campus Programming/
Outreach Specialist**

Elizabeth Ross

Financial Aid Associates

Jess Petre
(Communication & SAP)

Financial Aid Specialists

Ryen Denny
(Generalist)
Andrea Flores
(Awarding)
Kelli Green
(Reporting & Reconciliation)
Laura Paap
Communications)

Student Finance Specialist

Shakil Haider

**Senior Student Finance
Specialist**

Patrice Fullilove-McCall

Career Counselor

Sheri Eisch

STUDENT AFFAIRS - STUDENT SERVICES CENTER (RACINE)

**Acting Vice President,
Student Affairs**

Tammi Summers, PhD

Administrative Assistant

Marilyn Wikner

STUDENT EXPRESS

ACADEMIC ADVISING

RECRUITMENT

FINANCIAL AID

**CAREER AND
EMPLOYMENT SERVICES**

Director, Student Express

Curtis Turner

**Director, Student Services
Center**

Tanya Burton

**Director, Academic
Advising**

Olivia Mayen

Director, Recruitment

Bao Lee

Director, Financial Aid

Pamela Lowrey

**Career & Employment
Services Manager**

Jason Pruitt

Student Express Associates

Doris Mendez (Cashier)
Charyl Callewaert
Deisha Ortiz

Academic Advisers

Jasmin Ramos
Andrew Goodman
Michelle Nevarez-Larkin
Vincent Lieu
Raquel Palacios
Elyse Sewell
Amanda Virzi-Frahman

New Student Specialist

Sydney Brovold
Vanessa Leon

**Student Finance
Specialists**

AJ Paul
Nyla Troop

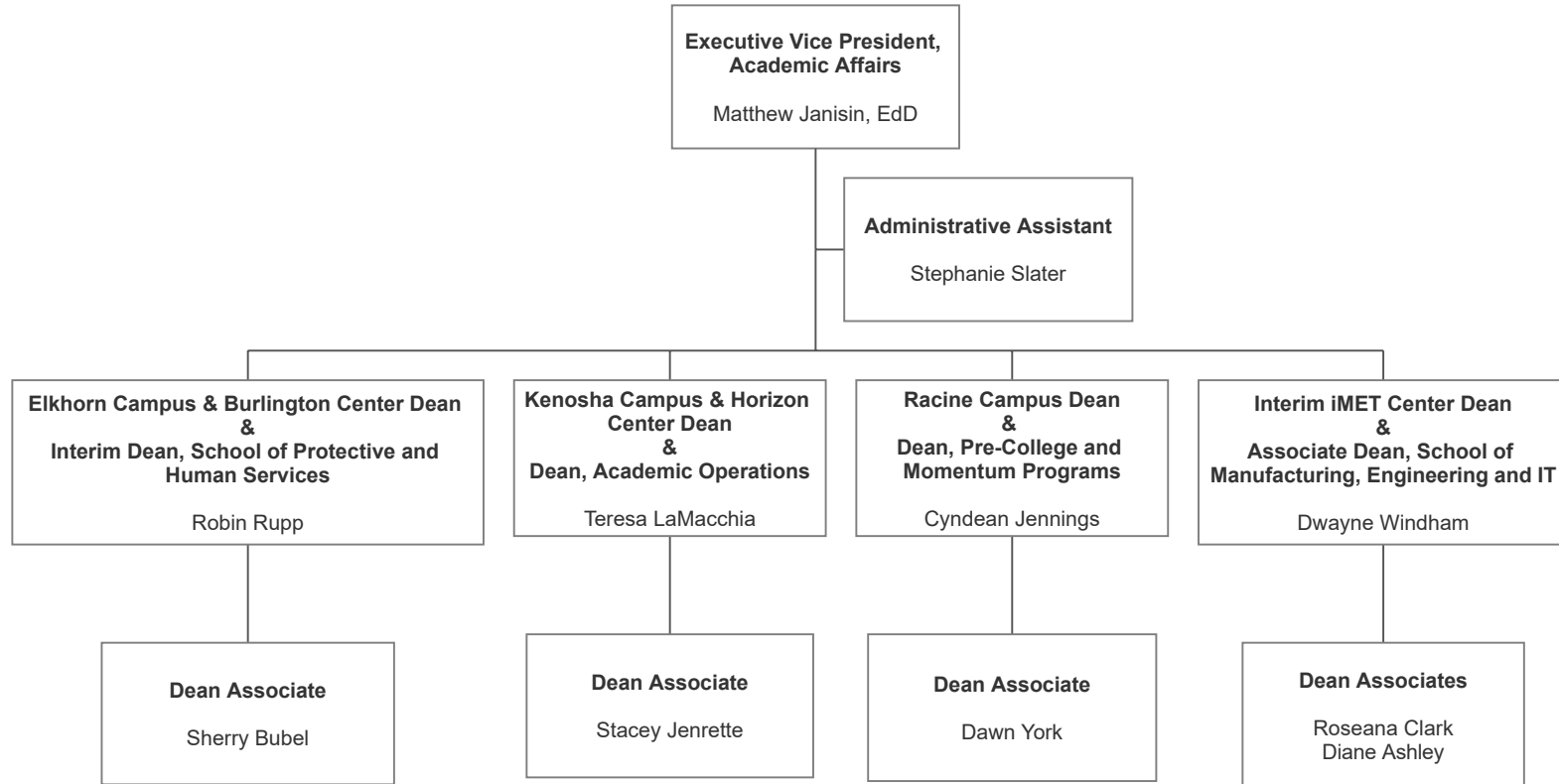
Career Counselor

Kevin McCray

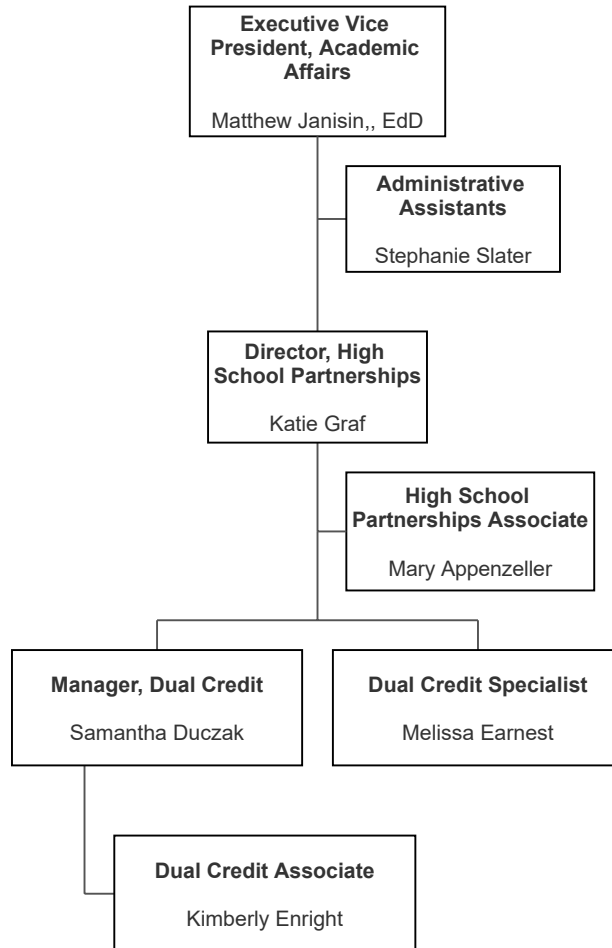
**Student Employment &
Work-Based Learning
Specialist**

LeAnn Butwil

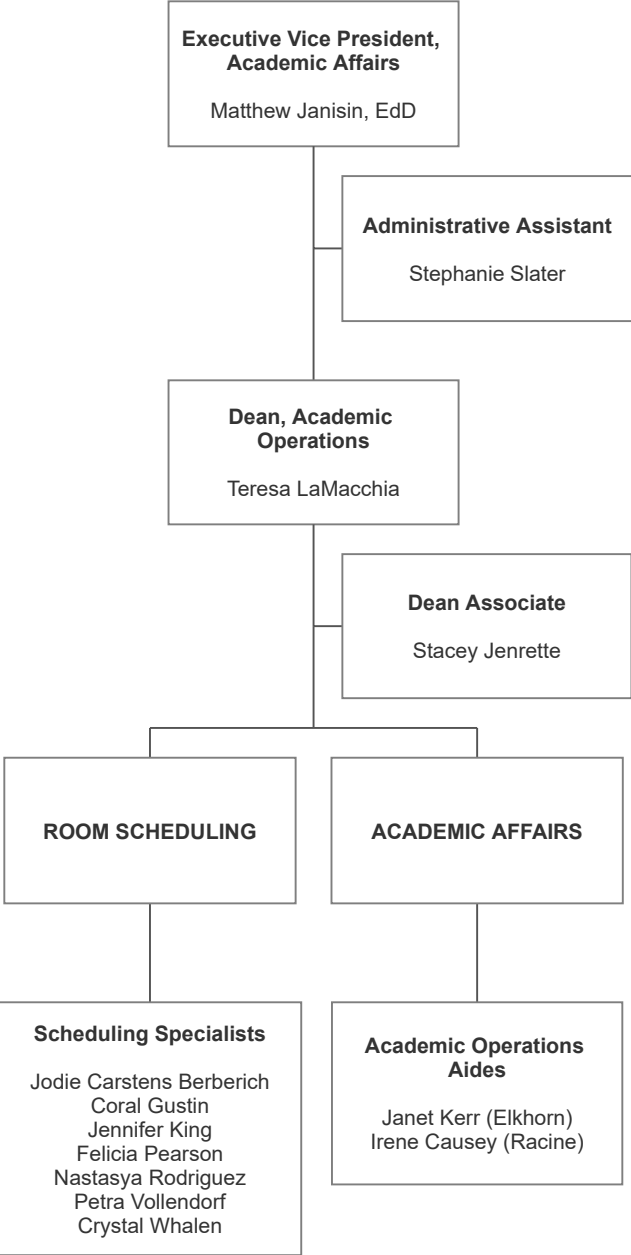
CAMPUS AFFAIRS (Campus & Center Deans)



ACADEMIC AFFAIRS - HIGH SCHOOL PARTNERSHIPS



ACADEMIC OPERATIONS



SCHOOL OF PRE-COLLEGE AND MOMENTUM PROGRAMS

**Executive Vice President,
Academic Affairs**
Matthew Janisin, EdD

Administrative Assistant
Stephanie Slater

**Dean, School of
Pre-College and
Momentum Programs**
Cyndean Jennings

**Pre-College & Momentum
Programs Associate**
Lidia Hernandez Guizar

Data Specialist (Elkhorn)
Tia White

Dean Associate (Racine)
Dawn York

**Program Coordinator
Integrated Education and
Training**
April Thomas

INSTRUCTORS

Instructors (Burlington/Elkhorn)

Sandra Fry (ABE)
Amber Huber (ABE)
Kate Mooney (ABE - Bilingual)
Jeannine Volbright (ALC)

Instructors (Kenosha)

Gabriela Anaya (ABE)
Elaine Asma (ELL)
Benjamin Briones (ABE)
Iryna Faulk (ALC)
Joi Jude (ABE)
Aracely Mouradian (ELL)
Donna Piccolo (ABE)
Debra Solomon, PhD (ELL)

Instructors (Racine)

Saja Nima Muhamed Albuarabi (ABE)
Guadalupe Badillo (ABE)
Juancarlos Castro (ABE)
Jeanine Cook (ABE)
Brianna Deering (ELL)
Fawn Funderberg (AHS - SS)
Kevin Krekling (ABE)
Richard Malloy (AHS - Comm)
Sophia Piliouras (ELL)
Amparo Trevino (AHS - His)
Kimberly Sovelenko (ELL)

PROMISE PROGRAMS

Gateway Promise Coordinators

Sabrina Morgan
Ken Riley

Promise 2 Finish & Stem Scholars Coordinator

Sabrina Morgan

TRANSITIONS

Transition Specialists

Linda Badillo
Shayla Malone

WORKFORCE INNOVATION GRANT

Project Director, WIG

Marshalli Hamilton

INTERNATIONAL EDUCATION

International Education Coordinator

Chinedu Obowu

SCHOOL OF LIBERAL ARTS AND SCIENCES

**Executive Vice President,
Academic Affairs**
Matthew Janisin, EdD

Administrative Assistant
Stephanie Slater

**Dean,
School of Liberal Arts and
Sciences**
Maxwell Banor, PhD

**Associate Dean
School of Liberal Arts and
Sciences**
Walter Griffin

Dean Associate
Karen Simpson

Dean Associates
Reyna Juarez

COMMUNICATIONS

MATHEMATICS

NATURAL SCIENCE

BEHAVIORAL & SOCIAL SCIENCES

WORLD LANGUAGES

GATEWAY TO SUCCESS

Instructors
Bridget Bell
Gretchen Comcowich
Colleen Connolly, PhD
Donetta Davis
Genevieve Freese
Jessica Gleason
Amy Hankins, PhD
Jay Johnson, PhD
Lisa Kusko
Jeffrey Lorino, PhD
Kathryn Nordhaus
Lisa Packard-Rykiel
Kathryn Schroeder, PhD
Tina Shanahan, PhD
Ann Stotts
Jennifer Vanags
Manhui Wang, PhD

Instructors
David Boyd
Meghan Froh
Rokhak Keshavarzi
Xiaoying Lin, PhD
Daniel Lyons, PhD
Manal Rizek
Qun Yu, PhD
Stephen Zambo

Instructors
Geeta Betrabet
Michael DuPrey
Nicole Dutton, Ph.D
Lori Janus
Richard McLaughlin, PhD
Timothy Sorensen
Kevin Yocum
Donald Zakutansky, PhD

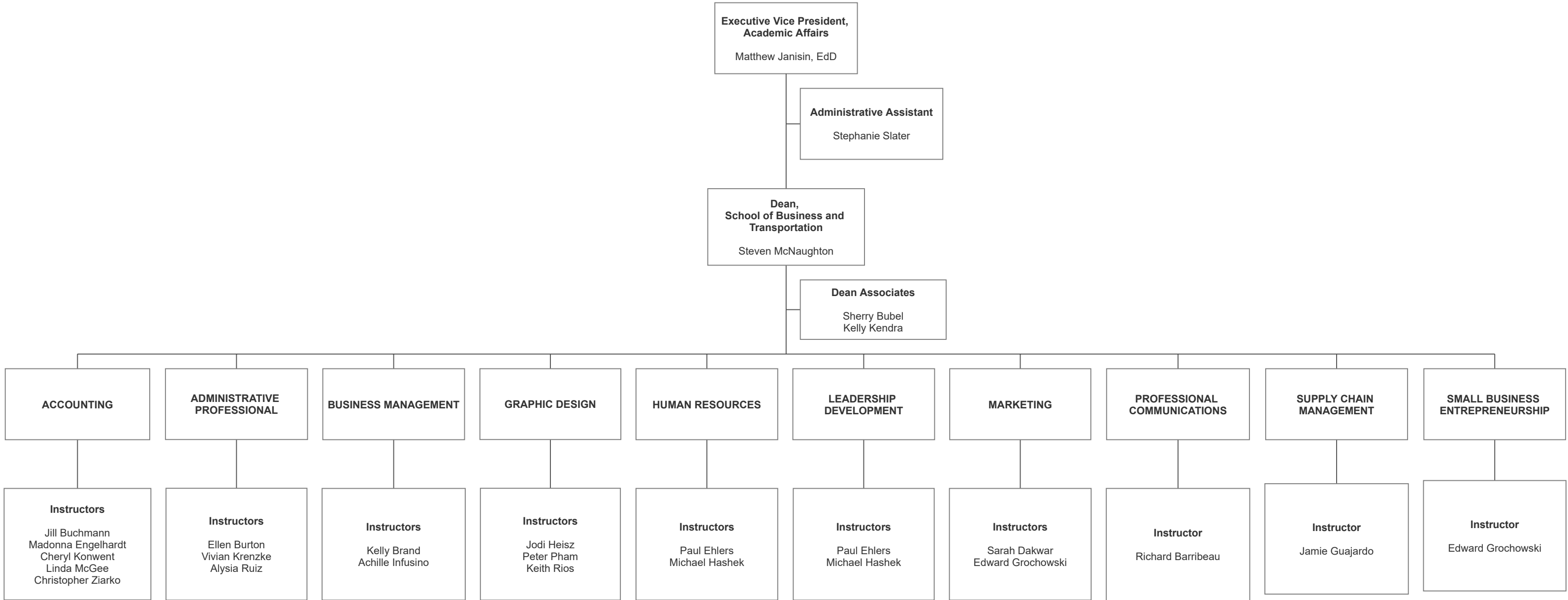
Science Technical Assistants
Andrew Meyer (Elkhorn)
Thomas Wood (Kenosha)
Durward Bevis (Racine)

Instructors
Behavioral Science
Psychology
Colleen Aird
Kristen Barker, PhD
Michael Costello
Stevie Summers, PhD
Social Science
Sociology
Colleen Aird
Brice Darras, PhD
Ronald Schultz
Suzanne Sublette, PhD
Stevie Summers, PhD
Economics
Angelina Helt

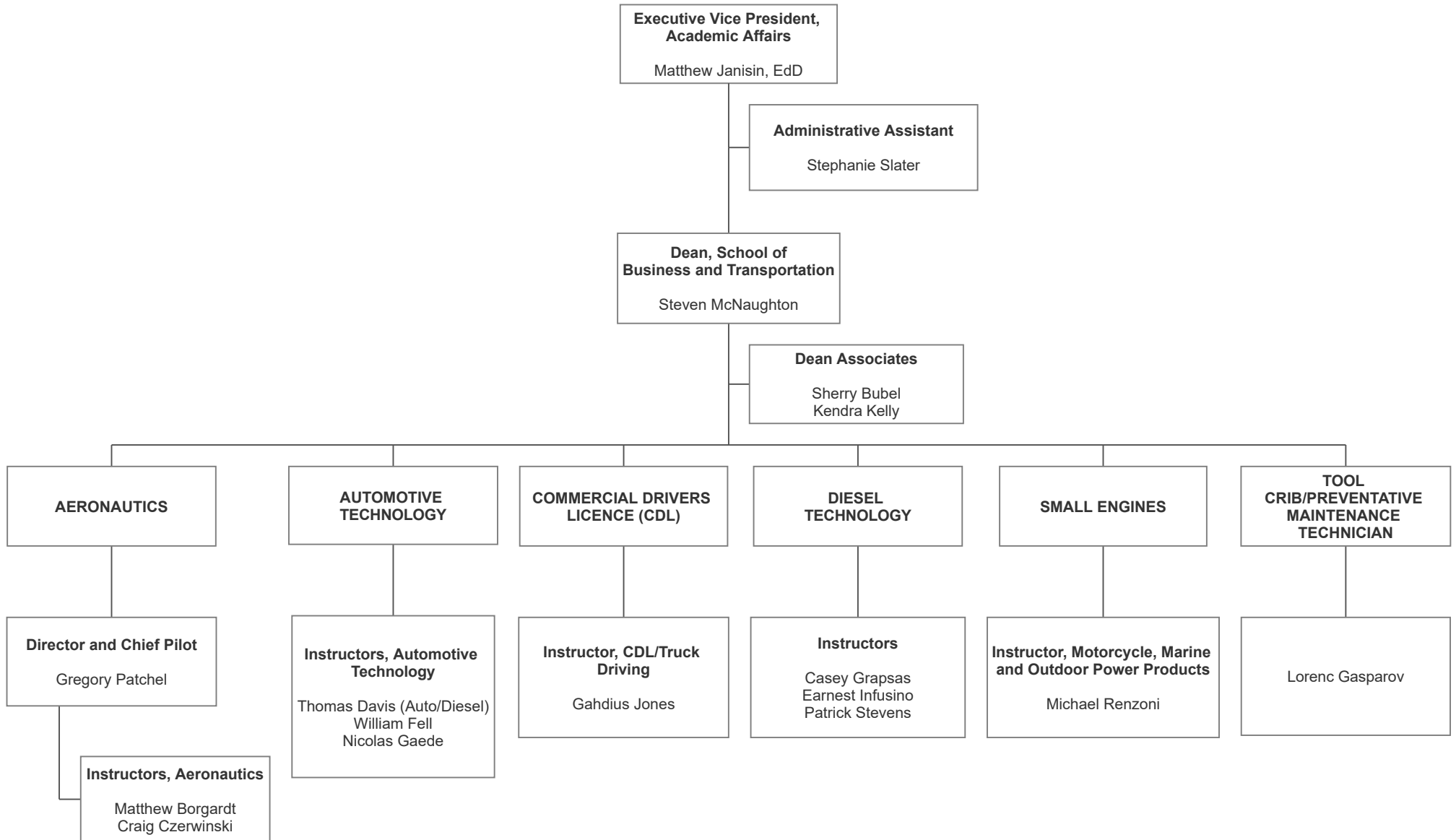
Instructor, Spanish
Kyle Kendall

Instructor
Oliver Debe

SCHOOL OF BUSINESS AND TRANSPORTATION



SCHOOL OF BUSINESS AND TRANSPORTATION



SCHOOL OF HEALTH - ALLIED

**Executive Vice President,
Academic Affairs**
Matthew Janisin, EdD

Administrative Assistant
Stephanie Slater

Dean, School of Health
Micheal Randolph

**Clinical Coordinator,
School of Health**
Amelia Riutta

Dean Associate
Diane Thygeson
Natashia Hanson

DENTAL ASSISTANT

Instructors
Heidi Gottfried
Kelsey Waite

**HEALTH INFORMATION
TECHNOLOGY**

Instructor
Kisha Peters

MEDICAL ASSISTANT

Instructors
Victoria Mertes
Vanessa Diaz Navarro
Krystal Orozco

**MEDICAL LABORATORY
TECHNICIAN**

**Instructor/Program
Director, Medical
Laboratory Technician**
Rebecca Lewilyn Beckmann

**Laboratory Technician
Assistant**
Patricia Ramig

NURSING ASSISTANT

Instructors
Melissa Cigallio
Denise Gill
Shayna Griffin
Brandy Harper
Elizabeth Huffman
Danille Johnson
Jessica Polcyn
Natasha VanderVere
Eva Waddell-Jimenez

**PHYSICAL THERAPIST
ASSISTANT**

**Program
Director/Instructor**
Traci Gotz, DPT

Instructor
Meredith Umnus

RESPIRATORY THERAPY

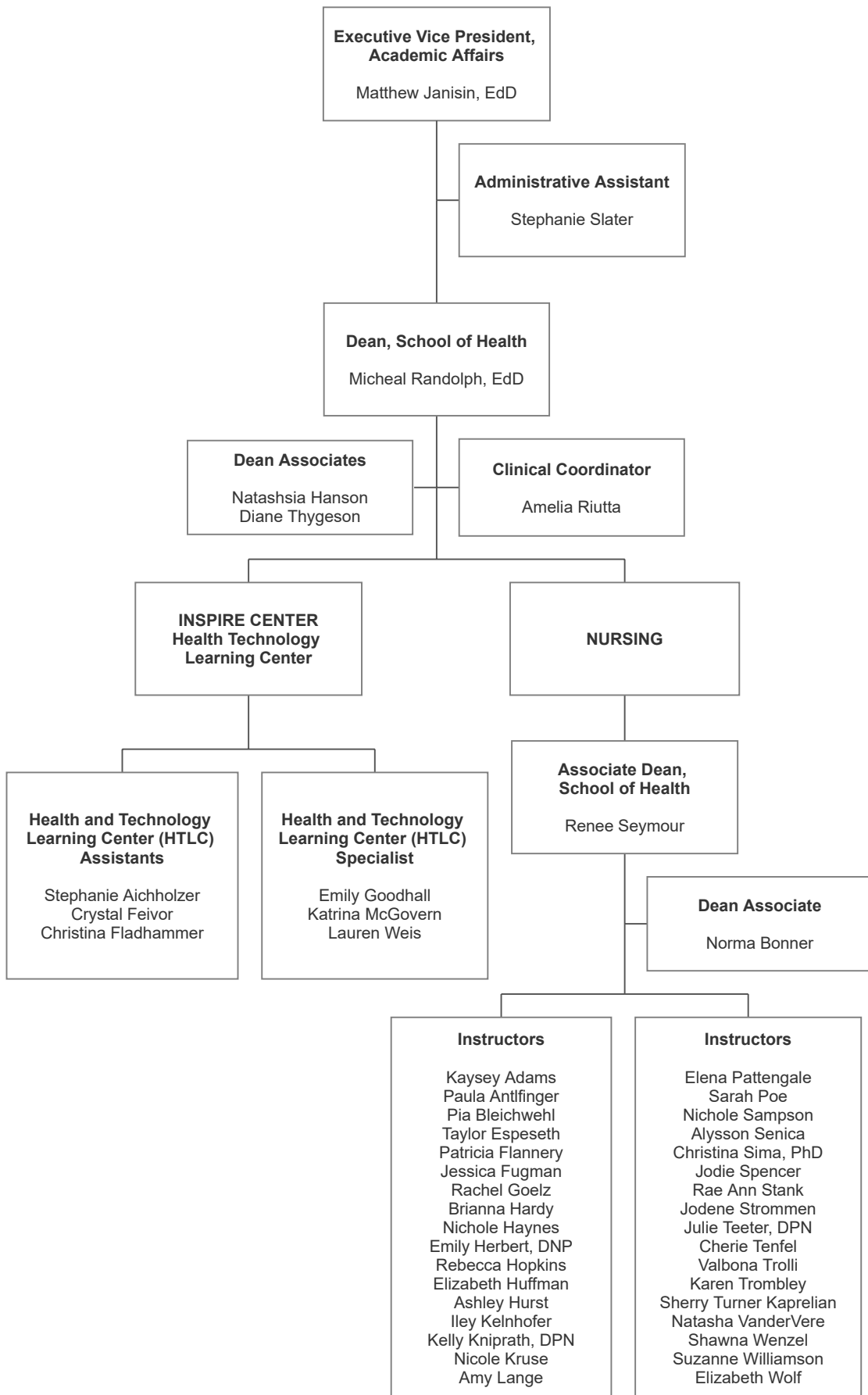
**Instructor/Program
Director**
Heather Holbrook

**Instructor/Director of
Clinical Education**
Joseph Richter

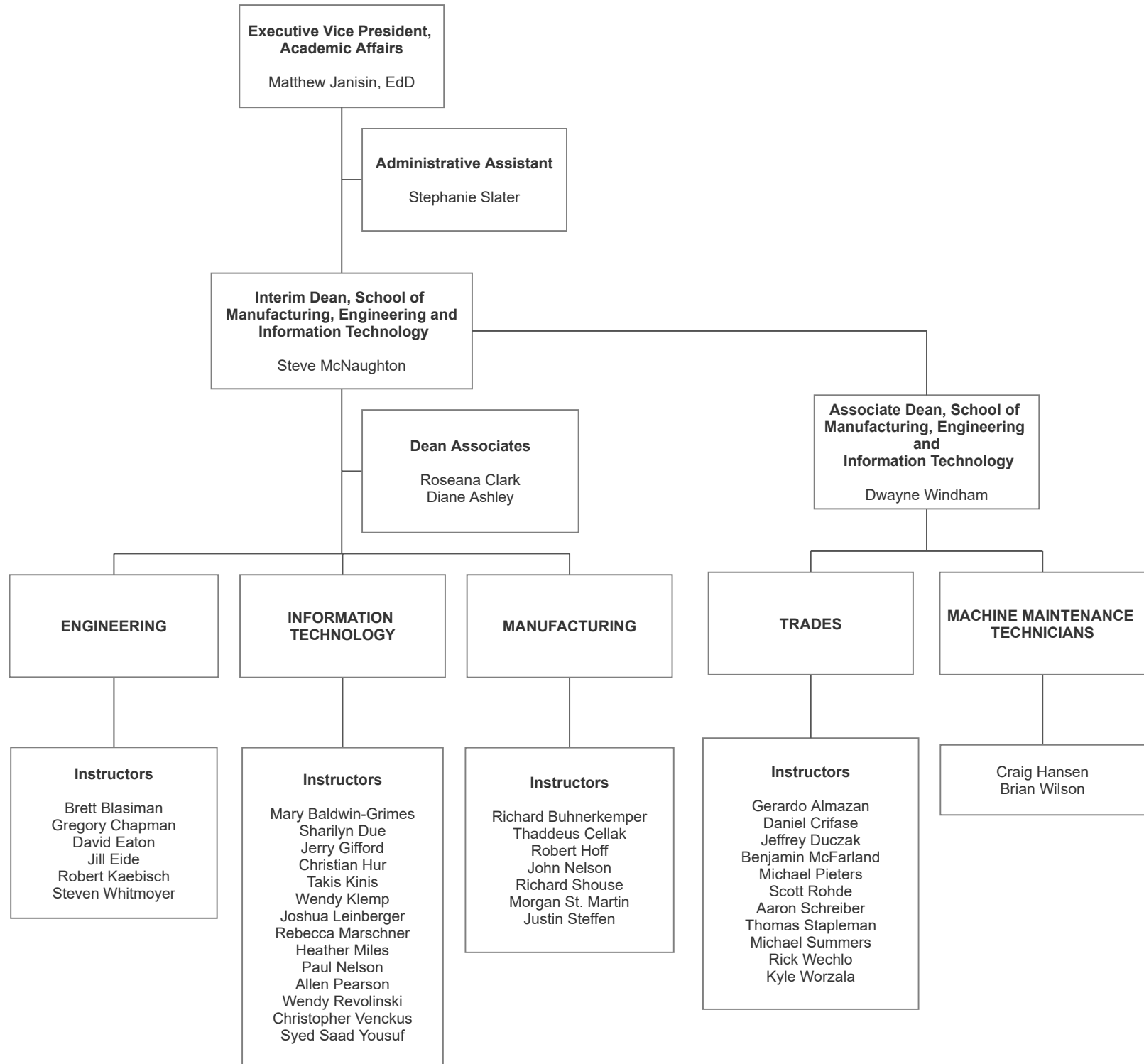
SURGICAL TECHNOLOGY

Instructor
Teresa Aulozzi
Janice Strom
Kristina Vines

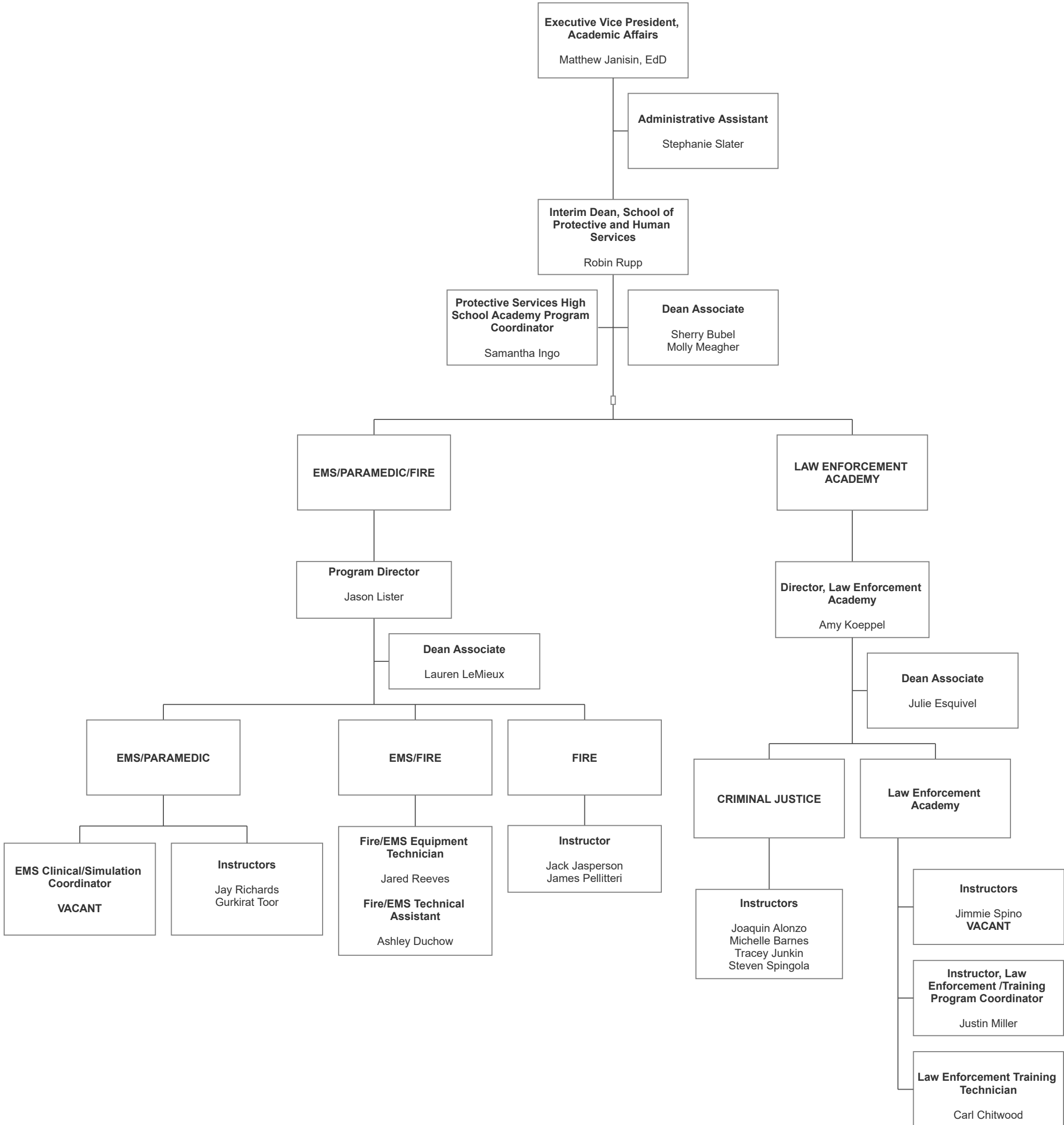
SCHOOL OF HEALTH - NURSING



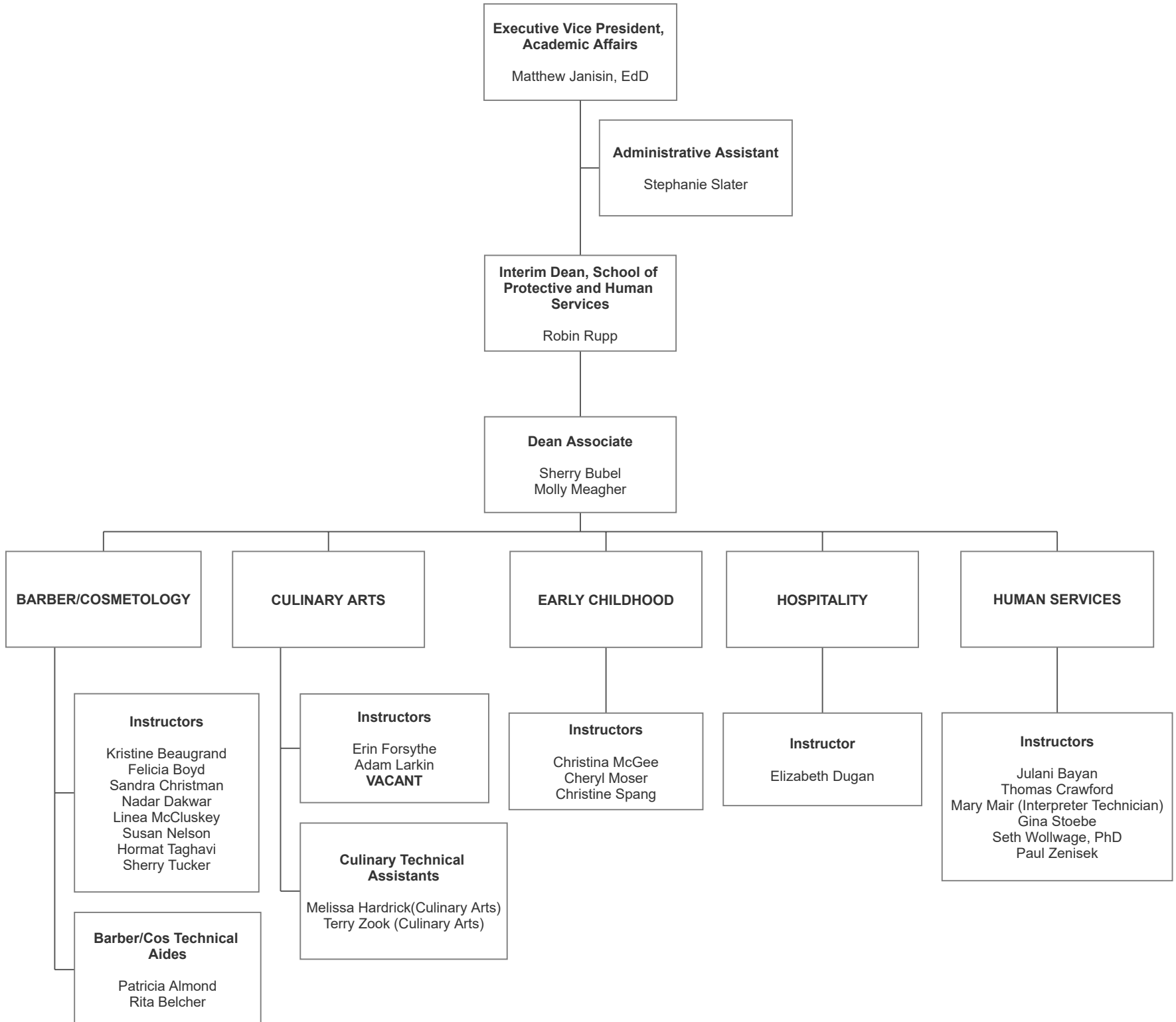
SCHOOL OF MANUFACTURING, ENGINEERING AND INFORMATION TECHNOLOGY



SCHOOL OF PROTECTIVE AND HUMAN SERVICES



SCHOOL OF PROTECTIVE AND HUMAN SERVICES



SCHOOL OF PROTECTIVE AND HUMAN SERVICES

